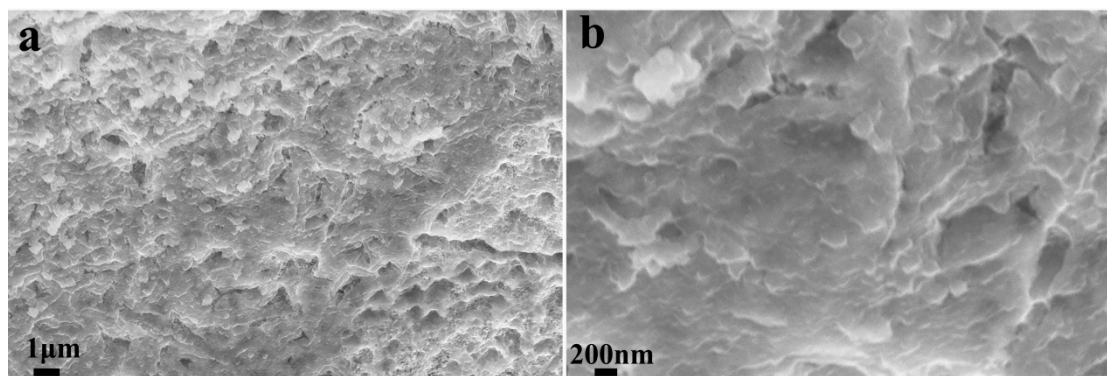
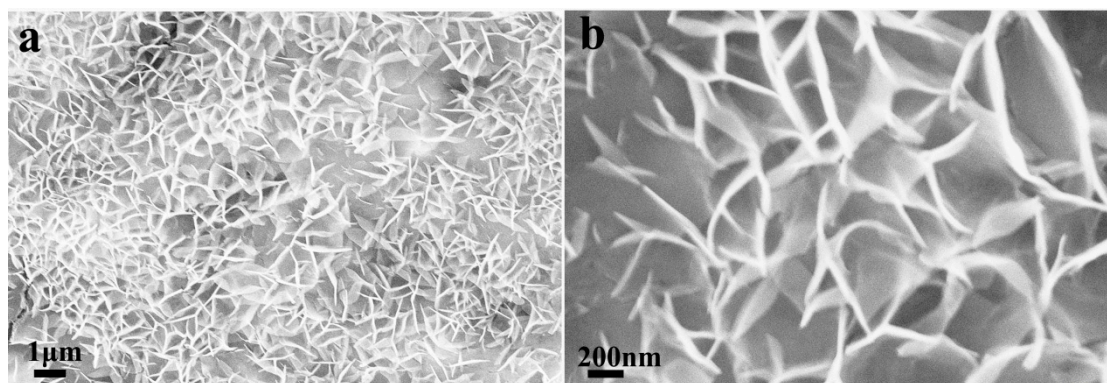


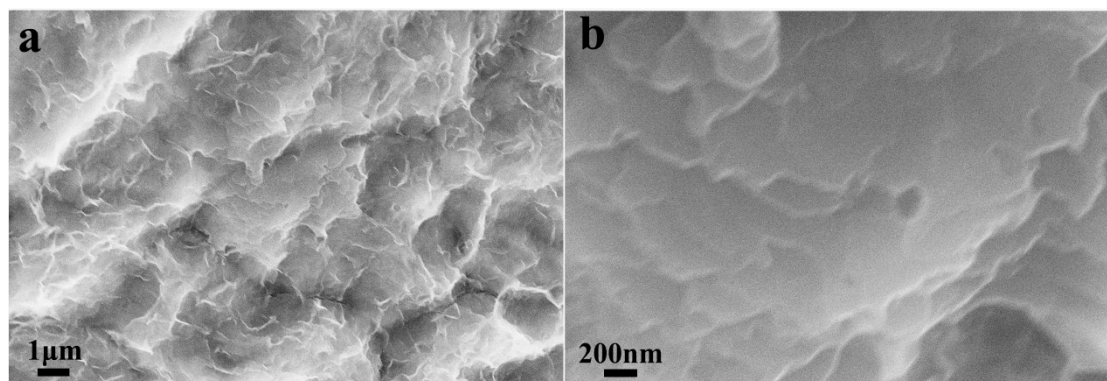
## Supporting Information



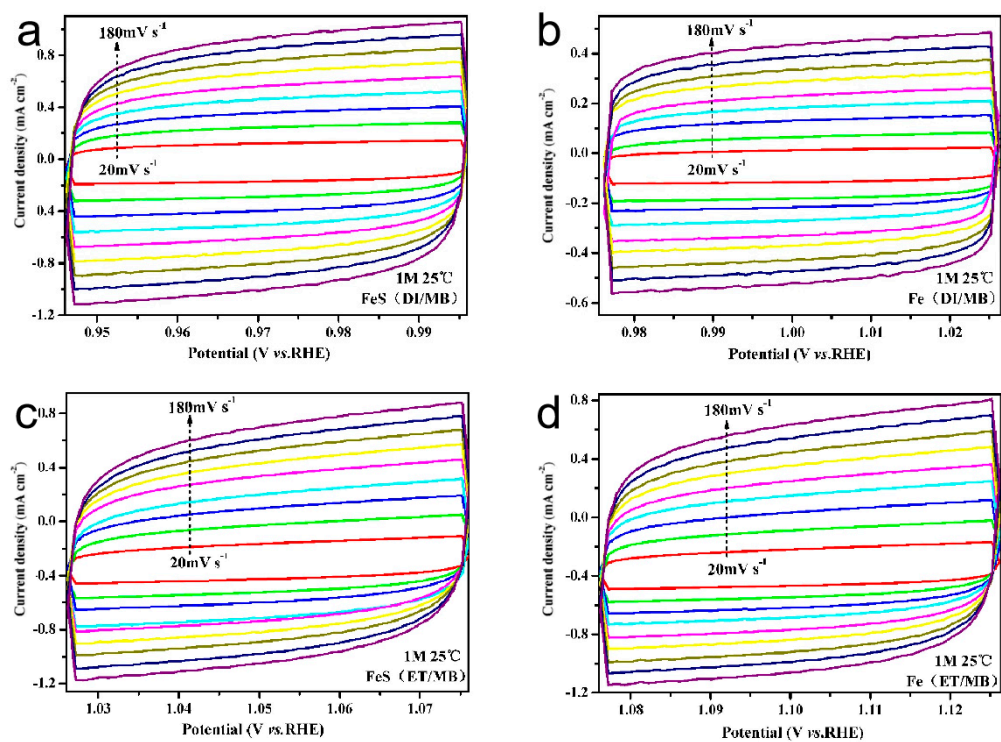
**Figure S1.** SEM images of FeS(ET/MB) electrodes. (a) 1  $\mu\text{m}$ ; (b) 200 nm.



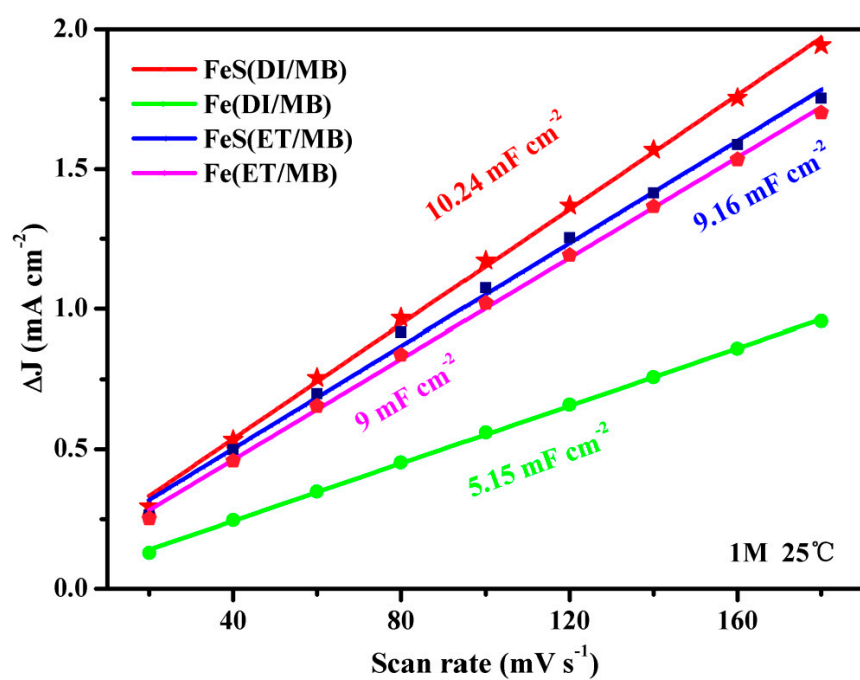
**Figure S2.** SEM images of Fe(DI/MB) electrodes. (a) 1  $\mu\text{m}$ ; (b) 200 nm.



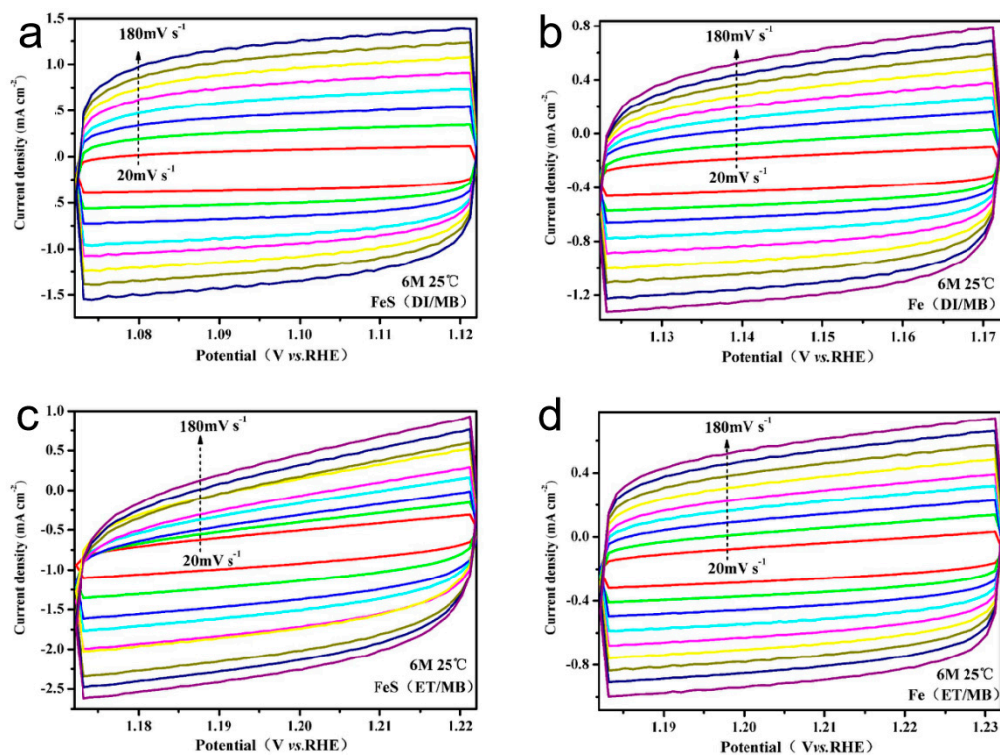
**Figure S3.** SEM images of Fe(ET/MB) electrodes. (a) 1  $\mu\text{m}$ ; (b) 200 nm.



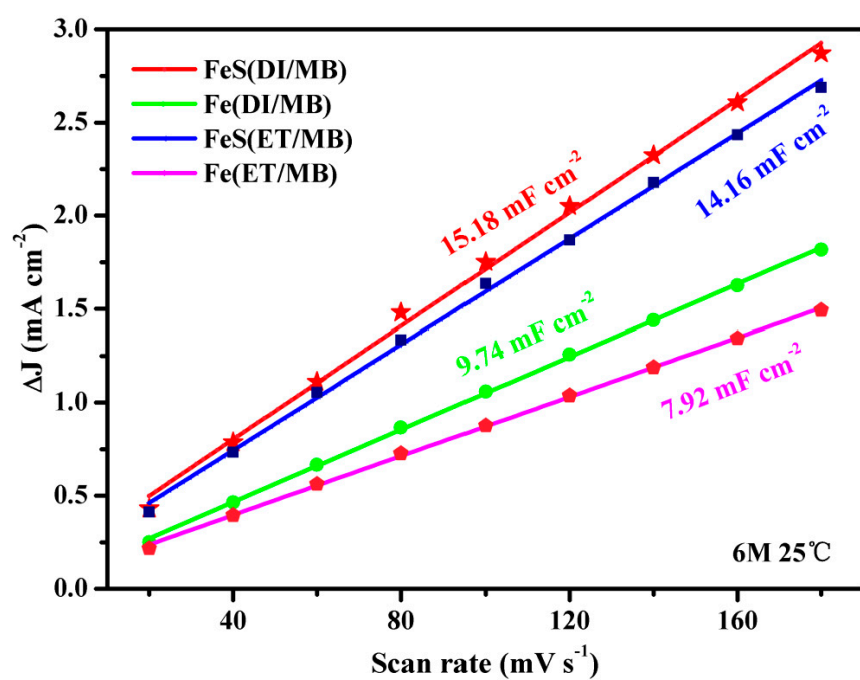
**Figure S4.** CV diagram of catalyst in 1 M KOH and 25 °C. (a) FeS(DI/MB), (b) Fe(DI/MB), (c) FeS(ET/MB) , (d) Fe(ET/MB).



**Figure S5.**  $C_{dl}$  plots of FeS(DI/MB), Fe(DI/MB), FeS(ET/MB), Fe(ET/MB).



**Figure S6.** CV diagram of catalyst in 6 M KOH and 25 °C. (a) FeS(DI/MB), (b) Fe(DI/MB), (c) FeS(ET/MB) , (d) Fe(ET/MB).



**Figure S7.**  $C_{dl}$  plots of FeS(DI/MB), Fe(DI/MB), FeS(ET/MB), Fe(ET/MB).