

sensors



an Open Access Journal by MDPI

Machine Learning and AI for Medical Data Analysis

Guest Editors:

Prof. Dr. Sang-Woong Lee

Dr. O-Joun Lee

Dr. Muhammad Adnan Khan

Dr. Ngoc Dung Bui

Deadline for manuscript
submissions:

closed (31 August 2023)

Message from the Guest Editors

The Special Issue aims to gather recent research focusing on AI and ML methodologies specialized in medical data. Of particular interest are submissions regarding attempts to solve issues surrounding the scarcity and imbalance of medical data (including, but not limited to, data-efficient domain adaption, transfer learning, synthetic data generation, and data augmentation). However, contributions concerning image/signal/natural language processing in medical data are also welcomed.

- ML and AI for biomedical applications
- Biomedical image/signal processing
- Biomedical image reconstruction
- Sensing, detection and recognition in biomedical signals
- Medical data acquisition, cleaning and integration using AI methodologies
- Data-efficient domain adaptation and transfer learning
- Synthetic data generation and data augmentation for biomedical applications
- Natural language processing and knowledge discovery in medical documents
- Drug effect/side effect prediction using AI or knowledge engineering
- Automated/computer-aided diagnosis using artificial intelligence or knowledge engineering



mdpi.com/si/97587

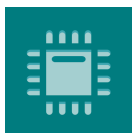
Dr. Sang-Woong Lee

Dr. O-Joun Lee

Dr. Muhammad Adnan Khan

Dr. Ngoc Dung Bui

Special Issue



sensors



an Open Access
Journal by MDPI

Editor-in-Chief

Prof. Dr. Vittorio M. N. Passaro

Dipartimento di Ingegneria
Elettrica e dell'Informazione
(Department of Electrical and
Information Engineering),
Politecnico di Bari, Via Edoardo
Orabona n. 4, 70125 Bari, Italy

Author Benefits

Open Access : free for readers, with [article processing charges \(APC\)](#) paid by authors or their institutions.

High Visibility: indexed within [Scopus](#), [SCIE \(Web of Science\)](#), [PubMed](#), [MEDLINE](#), [PMC](#), [Ei Compendex](#), [Inspec](#), [Astrophysics Data System](#), and [other databases](#).

Journal Rank: JCR - Q2 (*Instruments & Instrumentation*) / CiteScore - Q1 (*Instrumentation*)

Message from the Editor-in-Chief

Sensors is a leading journal devoted to fast publication of the latest achievements of technological developments and scientific research in the huge area of physical, chemical and biochemical sensors, including remote sensing and sensor networks. Both experimental and theoretical papers are published, including all aspects of sensor design, technology, proof of concept and application. *Sensors* organizes Special Issues devoted to specific sensing areas and applications each year.

Contact Us

Sensors Editorial Office
MDPI, St. Alban-Anlage 66
4052 Basel, Switzerland

Tel: +41 61 683 77 34
www.mdpi.com

mdpi.com/journal/sensors
sensors@mdpi.com
[X@Sensors_MDPI](#)