

sensors



an Open Access Journal by MDPI

Marine Sensing

Guest Editors:

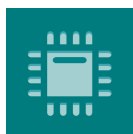
Prof. Dr. Wei Song

Prof. Dr. Antonio Liotta

Prof. Dr. Ge Chen

Deadline for manuscript
submissions:

closed (30 June 2017)



sensor

Indexed in:
PubMed

CITESCORE
6.8

IMPACT
FACTOR
3.9

an Open Access
Journal by MDPI

Author Benefits



Editor-in-Chief

Open Access: free for readers, with article processing charges (APC) paid by authors or institutions.
Editor: Prof. Dr. Antonio M. N. Passaro

High Visibility:

High visibility: indexed within Scopus, SCIE (Web of Science), MEDLINE, Elettrotecnica e dell'Informazione, Inspec, Astrophysics Data System, and other databases.

Journal Rank: JCR - Q2 (Instruments & Instrumentation) / CiteScore - Q1 (Information Engineering).

Message from the Guest Editors

Dear Colleagues,

The topics of interest for contributions to this Special Issue include, but are not limited to:

- emerging sensing and monitoring techniques for in-situ sampling, real-time observation, remote sensing, and underwater electro-optical sensors and systems
- deep sea sensing and operation
- intelligent underwater sensor networks and communication
- marine Internet
- sensor big data management, quality assessment and control
- multi-modal sensor data processing, integration and fusion
- marine remote sensing image processing and data analysis
- multimedia techniques for marine sensing, data processing and data visualization
- safety and security of marine sensing
- energy efficiency of sensors and sensor communications
- marine disaster sensing and forecasting (e.g., storm surge)
- marine sensing applications and services in ocean resource and environment protection, such as sea-ice monitoring, marine fishery, marine navigation and marine disaster decision-making support

Special Issue

Message from the Editor-in-Chief

Contact Us

Sensors Editorial Office
MDPI, St. Alban-Anlage 66
4052 Basel, Switzerland

Sensors is a leading journal devoted to fast publication of the latest achievements of technological developments and scientific research in the huge area of physical, chemical and biochemical sensors, including remote sensing and sensor networks. Both experimental and theoretical papers are published, including all aspects of sensor design, technology, proof of concept and application. *Sensors* organizes Special Issues devoted to specific topics and has a dedicated section for

Tel: +41 61 683 77 34
www.mdpi.com
mdpi.com/journal/sensors
sensors@mdpi.com
X @Sensors_MDPI