



sensors



an Open Access Journal by MDPI

Circuit Design and Signal Processing Technique for Biomedical Device and System

Guest Editors:

Dr. Jusung Kim

Department of Electronics
Engineering, Hanbat National
University, Daejeon 34158, Korea

Prof. Dr. Fabian Khateb

Department of Microelectronics,
Brno University of Technology,
616 00 Brno, Czech Republic

Deadline for manuscript
submissions:

closed (31 October 2023)

Message from the Guest Editors

Dear Colleagues,

Traditional biomedical devices operate with batteries in vivo. The use of a battery necessitates the large footprint of the device and determines its limited life-time. Thus, biomedical device realized with a small foot-print integrated circuit (IC) empowered by wireless power transfer have proven to be useful, but the reported (earlier) works have seen limited performances in the amount of available power in vivo, biosafety, data rate, and energy efficiency of biotelemetry.

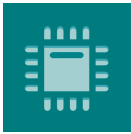
This Special Issue aims to highlight the development of mimiaturized, biomedical sensors improving the scalability of the system and energy efficiency.

For more information, please click: mdpi.com/si/115804



mdpi.com/si/115804

Special Issue



sensors



an Open Access Journal by MDPI

Editor-in-Chief

Prof. Dr. Vittorio M. N. Passaro

Dipartimento di Ingegneria
Elettrica e dell'Informazione
(Department of Electrical and
Information Engineering),
Politecnico di Bari, Via Edoardo
Orabona n. 4, 70125 Bari, Italy

Message from the Editor-in-Chief

Sensors is a leading journal devoted to fast publication of the latest achievements of technological developments and scientific research in the huge area of physical, chemical and biochemical sensors, including remote sensing and sensor networks. Both experimental and theoretical papers are published, including all aspects of sensor design, technology, proof of concept and application. *Sensors* organizes Special Issues devoted to specific sensing areas and applications each year.

Author Benefits

Open Access :— free for readers, with [article processing charges \(APC\)](#) paid by authors or their institutions.

High Visibility: indexed within [Scopus](#), [SCIE \(Web of Science\)](#), [PubMed](#), [MEDLINE](#), [PMC](#), [Ei Compendex](#), [Inspec](#), [Astrophysics Data System](#), and [other databases](#).

Journal Rank: JCR - Q2 (*Instruments & Instrumentation*) / CiteScore - Q1 (*Instrumentation*)

Contact Us

Sensors
MDPI, St. Alban-Anlage 66
4052 Basel, Switzerland

Tel: +41 61 683 77 34
www.mdpi.com

mdpi.com/journal/sensors
sensors@mdpi.com
[@Sensors_MDPI](https://twitter.com/Sensors_MDPI)