



*sensors*



an Open Access Journal by MDPI

## Advanced Wearable Sensors for Medical Applications

Guest Editors:

**Dr. Tomas Koutny**

Independent Researcher, 330 01  
Pilsen, Czech Republic

**Dr. Loris Nanni**

Department of Information  
Engineering, University of Padua,  
Via Gradenigo 6, 35131 Padova,  
Italy

Deadline for manuscript  
submissions:

**31 July 2024**

### Message from the Guest Editors

Personalized medicine conveys new, exciting challenges to our research when working with sensors, artificial intelligence, and wearable and smart devices to enhance the existing state of the art in personalized medicine.

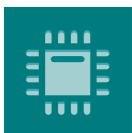
This Special Issue will address topics related to the delivery of personalized medicine. These span sensory input to diagnostics methods, including, but not limited to, the following:

- Data collection and process with wearables and smart sensors.
- Application of artificial intelligence in medical sensors.
- Intelligent sensors for personalized/precision medicine.
- Image recognition and classification in medical sensing.



[mdpi.com/si/189340](https://mdpi.com/si/189340)

# Special Issue



# sensors



an Open Access Journal by MDPI

## Editor-in-Chief

### **Prof. Dr. Vittorio M. N. Passaro**

Dipartimento di Ingegneria  
Elettrica e dell'Informazione  
(Department of Electrical and  
Information Engineering),  
Politecnico di Bari, Via Edoardo  
Orabona n. 4, 70125 Bari, Italy

## Message from the Editor-in-Chief

*Sensors* is a leading journal devoted to fast publication of the latest achievements of technological developments and scientific research in the huge area of physical, chemical and biochemical sensors, including remote sensing and sensor networks. Both experimental and theoretical papers are published, including all aspects of sensor design, technology, proof of concept and application. *Sensors* organizes Special Issues devoted to specific sensing areas and applications each year.

## Author Benefits

**Open Access :** free for readers, with [article processing charges \(APC\)](#) paid by authors or their institutions.

**High Visibility:** indexed within [Scopus](#), [SCIE \(Web of Science\)](#), [PubMed](#), [MEDLINE](#), [PMC](#), [Ei Compendex](#), [Inspec](#), [Astrophysics Data System](#), and [other databases](#).

**Journal Rank:** JCR - Q2 (*Instruments & Instrumentation*) / CiteScore - Q1 (*Instrumentation*)

## Contact Us

*Sensors* Editorial Office  
MDPI, St. Alban-Anlage 66  
4052 Basel, Switzerland

Tel: +41 61 683 77 34  
[www.mdpi.com](http://www.mdpi.com)

[mdpi.com/journal/sensors](http://mdpi.com/journal/sensors)  
[sensors@mdpi.com](mailto:sensors@mdpi.com)  
[X@Sensors\\_MDPI](#)