

sensors



an Open Access Journal by MDPI

Advanced Sensing Technologies for Tele-Assessment and Tele-Rehabilitation

Guest Editors:

Dr. Milad Nazarahari

Department of Mechanical Engineering, University of Alberta, Edmonton, AB, Canada

Prof. Dr. Christian Peham

Department for Companion Animals and Horses, University of Veterinary Medicine, Veterinärplatz 1, 1210 Vienna, Austria

Deadline for manuscript submissions:

closed (30 November 2023)

Message from the Guest Editors

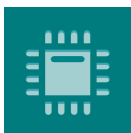
Recent advancements in sensing technologies, especially wearable technologies, have provided an unprecedented opportunity for tele-assessment and tele-rehabilitation. Sensing technologies such as motion trackers and physiological sensors, can measure (remotely) human movement and physiological signals, thus allowing us to predict a disease, objectively quantify the consequences of a disease, and finally deliver therapy. This is particularly important when we consider accessibility and affordability of these sensing technologies (e.g., smartwatches and smartphones). Additionally, combined with artificial intelligence, the large volume of data measured with these sensing technologies can answer questions, which was not possible before. Nevertheless, the application of sensing technologies is not limited to clinical settings, and they have been shown to be promising in many other settings such as sport engineering and ergonomics.

Thus, this Special Issue aims to put together articles presenting recent advances, novel technologies and algorithms, technical and clinical applications, and finally challenges pertaining to sensing technologies for tele-assessment and tele-rehabilitation.



mdpi.com/si/138848

Special Issue



sensors



an Open Access Journal by MDPI

Editor-in-Chief

Prof. Dr. Vittorio M. N. Passaro

Dipartimento di Ingegneria
Elettrica e dell'Informazione
(Department of Electrical and
Information Engineering),
Politecnico di Bari, Via Edoardo
Orabona n. 4, 70125 Bari, Italy

Message from the Editor-in-Chief

Sensors is a leading journal devoted to fast publication of the latest achievements of technological developments and scientific research in the huge area of physical, chemical and biochemical sensors, including remote sensing and sensor networks. Both experimental and theoretical papers are published, including all aspects of sensor design, technology, proof of concept and application. *Sensors* organizes Special Issues devoted to specific sensing areas and applications each year.

Author Benefits

Open Access : free for readers, with [article processing charges \(APC\)](#) paid by authors or their institutions.

High Visibility: indexed within [Scopus](#), [SCIE \(Web of Science\)](#), [PubMed](#), [MEDLINE](#), [PMC](#), [Ei Compendex](#), [Inspec](#), [Astrophysics Data System](#), and [other databases](#).

Journal Rank: JCR - Q2 (*Instruments & Instrumentation*) / CiteScore - Q1 (*Instrumentation*)

Contact Us

Sensors Editorial Office
MDPI, St. Alban-Anlage 66
4052 Basel, Switzerland

Tel: +41 61 683 77 34
www.mdpi.com

mdpi.com/journal/sensors
sensors@mdpi.com
[X@Sensors_MDPI](#)