



sensors



an Open Access Journal by MDPI

Data, Signal and Image Processing and Applications in Sensors III

Guest Editors:

Dr. Manuel José Cabral dos Santos Reis

Department of
Engineering/IEETA, University of
Trás-os-Montes e Alto Douro,
5000-801 Vila Real, Portugal

Dr. Nishu Gupta

Department of Electronic
Systems, Faculty of Information
Technology and Electrical
Engineering, Norwegian
University of Science and
Technology (NTNU), 2815 Gjøvik,
Norway

Deadline for manuscript
submissions:

closed (15 May 2023)

Message from the Guest Editors

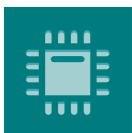
With the rapid advances in sensor technology, a vast and ever-growing quantity of data in various domains and modalities is readily available. However, presenting raw signal data collected directly from sensors is sometimes inappropriate because of the presence of noise or distortion, among others. In order to obtain relevant and insightful metrics from sensor signals' data, further enhancement of the sensor signals acquired (e.g., noise reduction in one-dimensional electroencephalographic (EEG) signals or color correction in endoscopic images) and their analysis by computer-based medical systems is needed. The processing of the data in itself and the consequent extraction of useful information are also vital and included in the topics of this Special Issue.

This Special Issue of *Sensors* aims to highlight advances in the development, testing, and application of data, signal, and image processing algorithms and techniques to all types of sensors and sensing methodologies. Experimental and theoretical results, in as much detail as possible, are very welcome. Review papers are also very welcome. There is no restriction on the length of the papers.



mdpi.com/si/145733

Special Issue



sensors



an Open Access Journal by MDPI

Editor-in-Chief

Prof. Dr. Vittorio M. N. Passaro

Dipartimento di Ingegneria
Elettrica e dell'Informazione
(Department of Electrical and
Information Engineering),
Politecnico di Bari, Via Edoardo
Orabona n. 4, 70125 Bari, Italy

Message from the Editor-in-Chief

Sensors is a leading journal devoted to fast publication of the latest achievements of technological developments and scientific research in the huge area of physical, chemical and biochemical sensors, including remote sensing and sensor networks. Both experimental and theoretical papers are published, including all aspects of sensor design, technology, proof of concept and application. *Sensors* organizes Special Issues devoted to specific sensing areas and applications each year.

Author Benefits

Open Access : free for readers, with [article processing charges \(APC\)](#) paid by authors or their institutions.

High Visibility: indexed within [Scopus](#), [SCIE \(Web of Science\)](#), [PubMed](#), [MEDLINE](#), [PMC](#), [Ei Compendex](#), [Inspec](#), [Astrophysics Data System](#), and [other databases](#).

Journal Rank: JCR - Q2 (*Instruments & Instrumentation*) / CiteScore - Q1 (*Instrumentation*)

Contact Us

Sensors Editorial Office
MDPI, St. Alban-Anlage 66
4052 Basel, Switzerland

Tel: +41 61 683 77 34
www.mdpi.com

mdpi.com/journal/sensors
sensors@mdpi.com
[X@Sensors_MDPI](#)