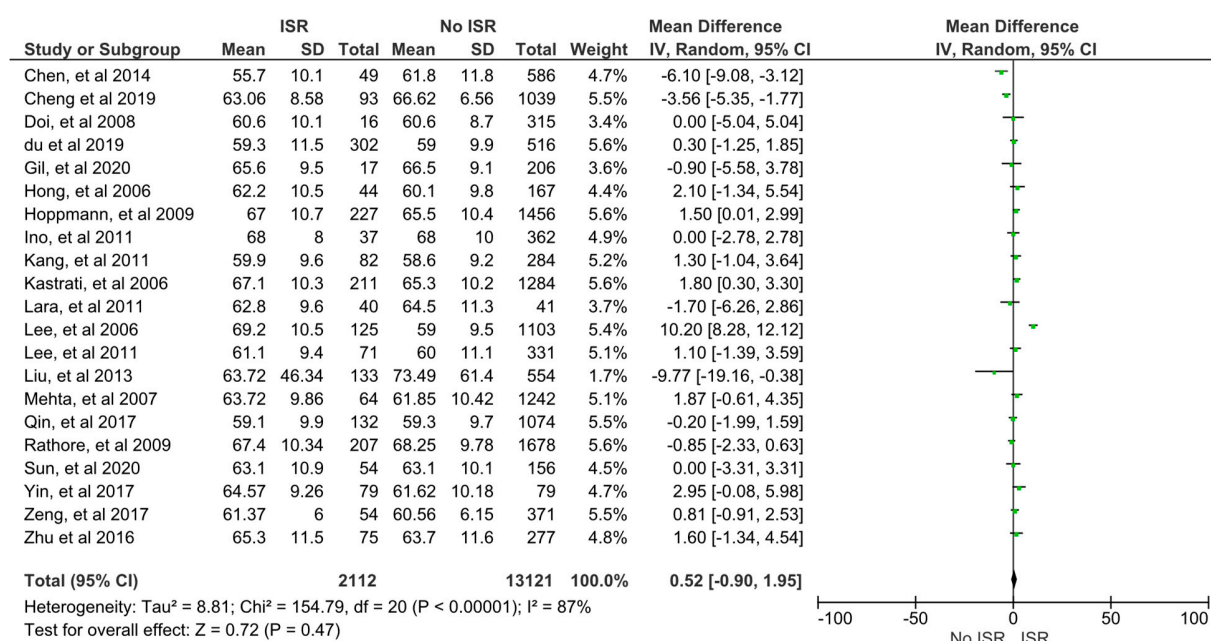
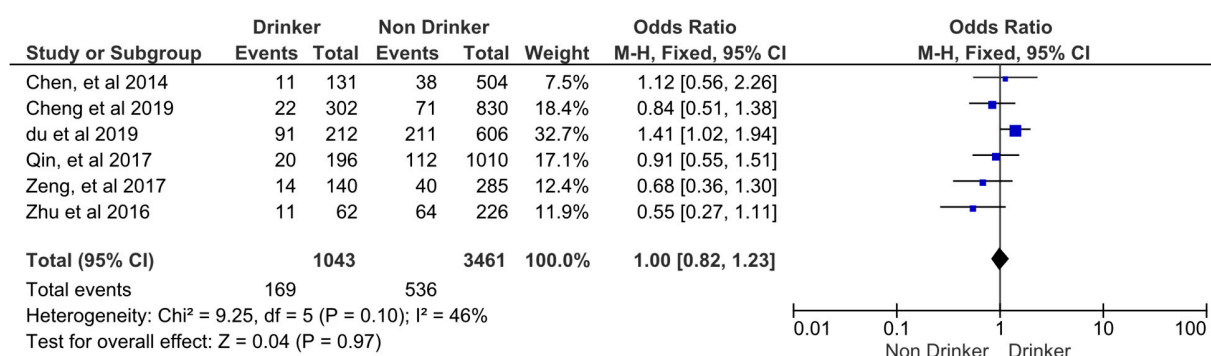


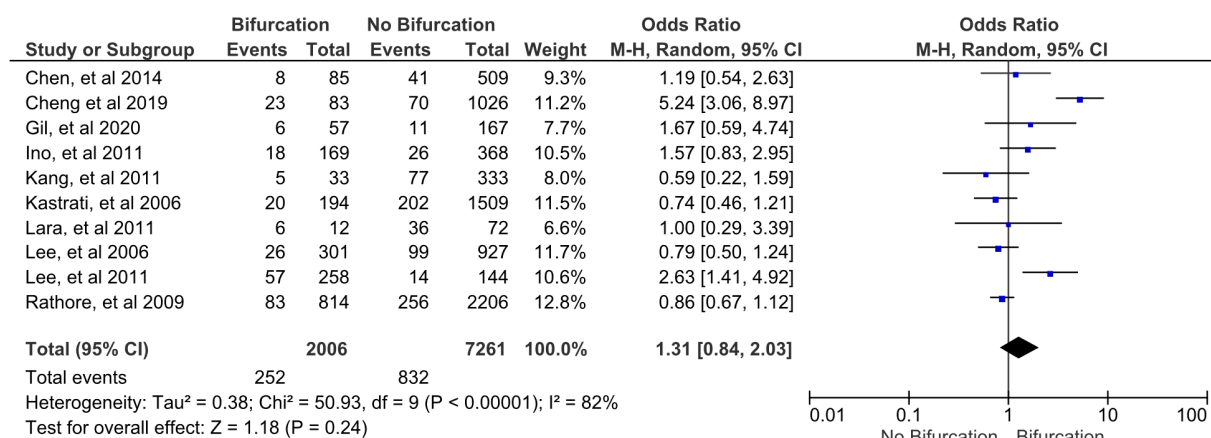
Supplementary figure S1. Type C lesion was significantly associated with in stent restenosis following DES implantation.



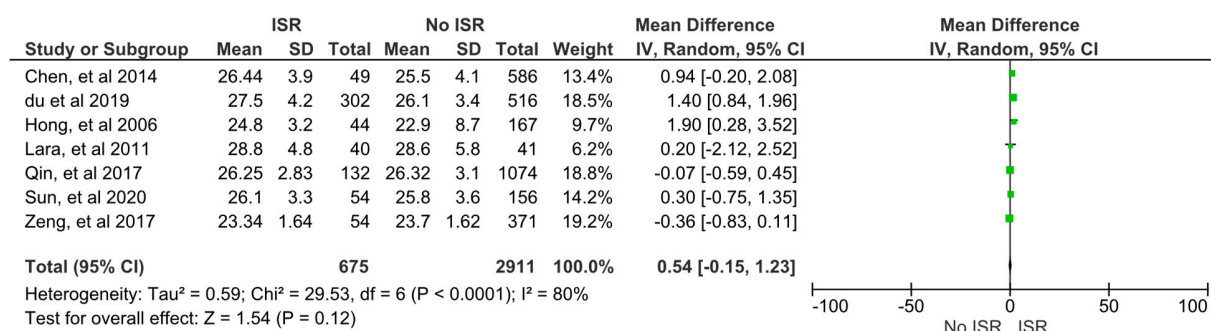
Supplementary figure S2. Age was not significantly associated with in stent restenosis following DES implantation.



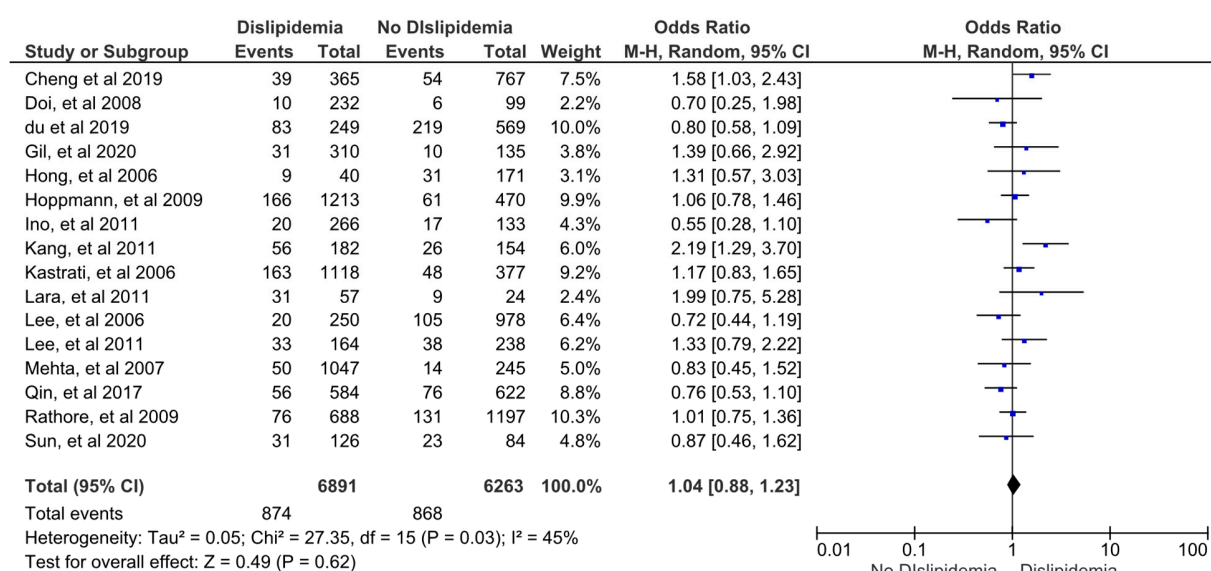
Supplementary figure S3. Alcohol drinking was not significantly associated with in stent restenosis following DES implantation.



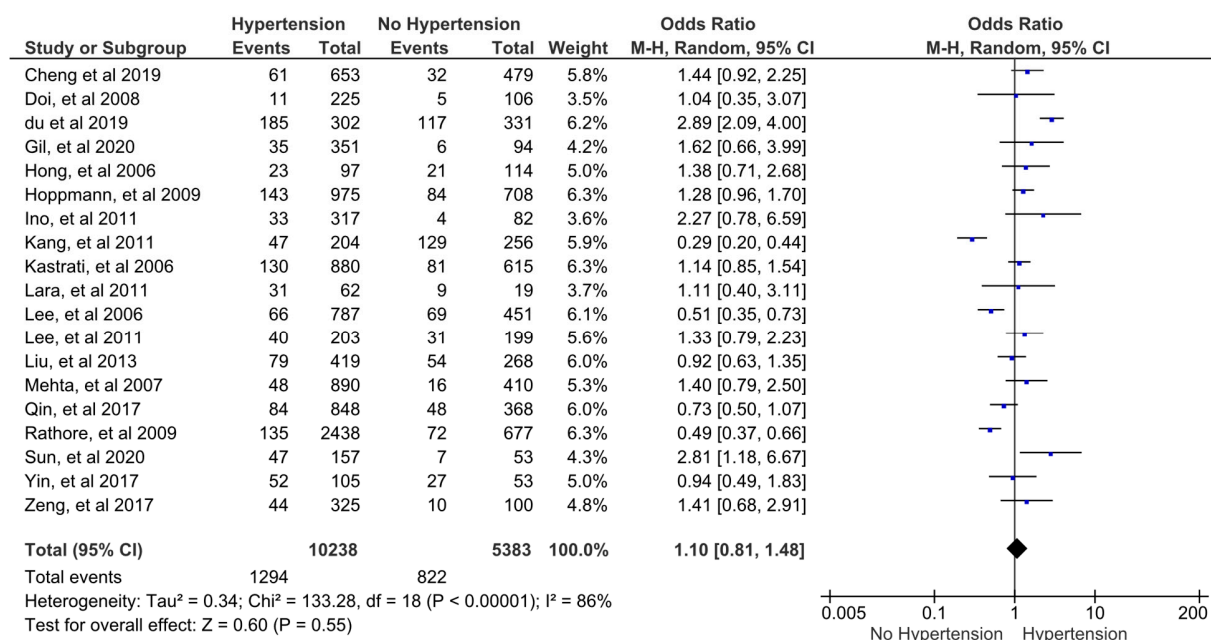
Supplementary figure S4. Bifurcation lesion was not significantly associated with in stent restenosis following DES implantation.



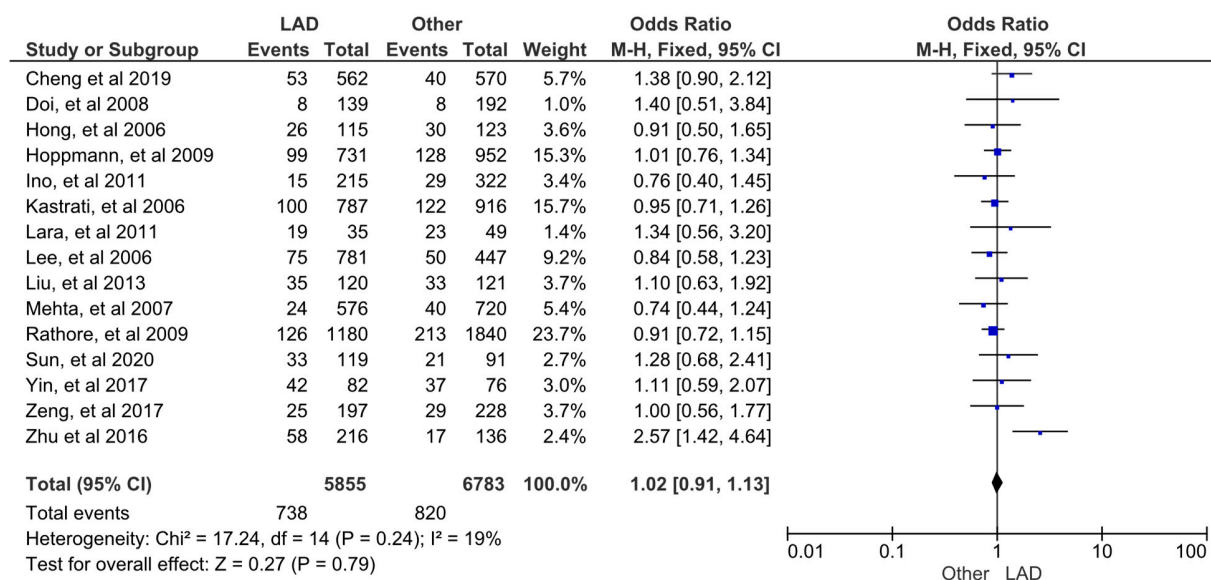
Supplementary figure S5. Body mass index was significantly associated with in stent restenosis following DES implantation.



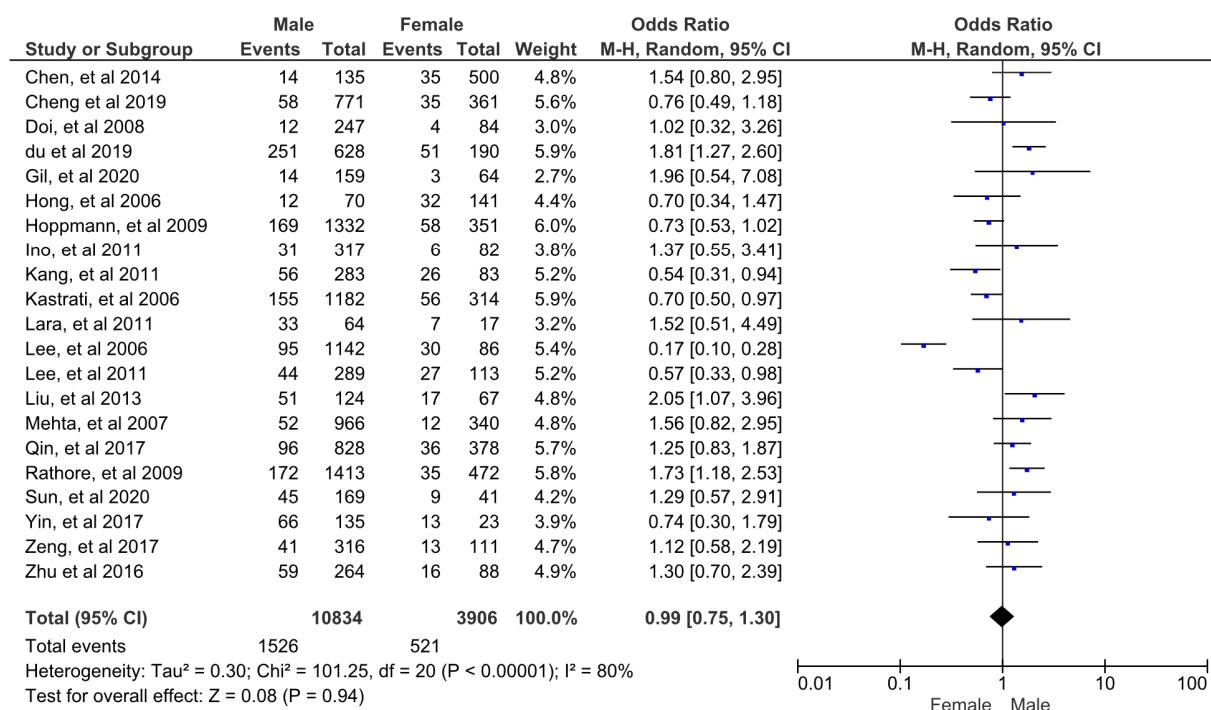
Supplementary figure S6. Dyslipidemia was not significantly associated with in stent restenosis following DES implantation.



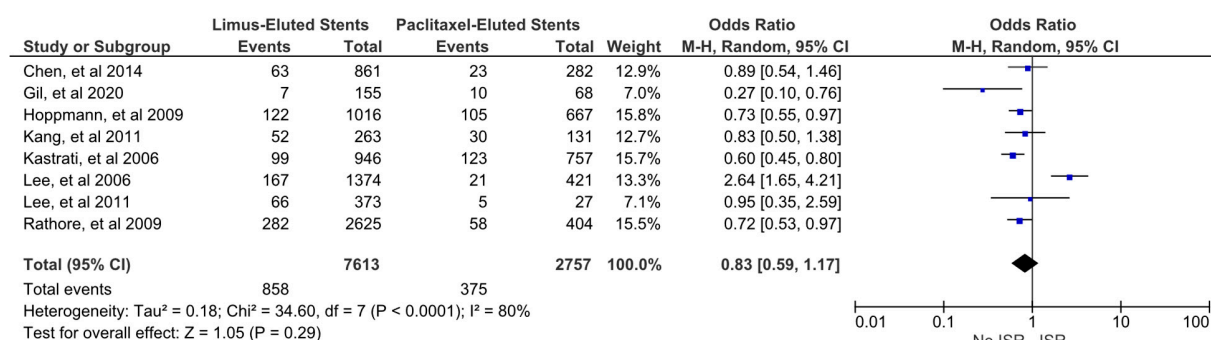
Supplementary figure S7. Hypertension was not significantly associated with in stent restenosis following DES implantation.



Supplementary figure S8. Left anterior descending lesion was not significantly associated with in stent restenosis following DES implantation.



Supplementary figure S9. Male gender was not significantly associated with in stent restenosis following DES implantation.



Supplementary figure S10. Stent type (limus-eluting vs. taxel-eluting) was not significantly associated with in stent restenosis following DES implantation.

Supplementary Table S1. Detailed search strategy.

Database	Keywords	Record identified
Embase	"coronary artery disease" OR "CAD," AND "In-stent restenosis" OR "stent restenosis" OR "ISR," AND "drug-eluting stent" OR "DES," AND "risk factor" OR "predicting factor" OR "predictor."	286
ProQuest	"coronary artery disease" OR "CAD," AND "In-stent restenosis" OR "stent restenosis" OR "ISR," AND "drug-eluting stent" OR "DES," AND "risk factor" OR "predicting factor" OR "predictor."	315
PubMed	"coronary artery disease" OR "CAD," AND "In-stent restenosis" OR "stent restenosis" OR "ISR," AND "drug-eluting stent" OR "DES," AND "risk factor" OR "predicting factor" OR "predictor."	729
ClinicalTrials.gov	"coronary artery disease" OR "CAD," AND "In-stent restenosis" OR "stent restenosis" OR "ISR," AND "drug-eluting stent" OR "DES," AND "risk factor" OR "predicting factor" OR "predictor."	22
CENTRAL	"coronary artery disease" OR "CAD," AND "In-stent restenosis" OR "stent restenosis" OR "ISR," AND "drug-eluting stent" OR "DES," AND "risk factor" OR "predicting factor" OR "predictor."	27
TOTAL		1379

CAD = coronary artery disease; DES = drug eluting stent; ISR = in-stent restenosis

Supplementary table S2. Newcastle Ottawa Score of each cohort included in the study

Study	Year	Selection				Comparability	Outcome			NOS
		Representativeness of the exposed cohort	Selection of the non-exposed cohort	Ascertainment of exposure	Demonstration that outcome of interest was not present at start of study	Comparability of cohorts on the basis of the design or analysis controlled for confounders	Assessment of outcome	Was follow-up long enough for outcomes to occur	Adequacy of follow-up of cohorts	
Cheng et al. [14]	2019	1	1	1	1	1	1	1	1	8
Du et al. [17]	2019	1	1	1	1	1	1	0	1	7
Hong et al. [20]	2006	1	1	1	0	1	1	1	1	7
Hoppmann et al. [21]	2009	1	1	1	1	1	1	1	1	8
Kastrati et al. [8]	2006	1	1	1	0	1	1	1	1	7
Lee et al. [25]	2006	1	1	1	1	1	1	1	1	8
Lee et al. [26]	2011	1	1	1	1	1	0	1	1	7
Liu et al. [27]	2013	1	1	0	1	1	1	1	1	7
Qin et al. [29]	2017	1	1	1	1	1	0	1	1	7
Rathore et al. [30]	2009	1	1	1	1	1	1	1	1	8
Sun et al. [31]	2020	1	1	1	1	1	0	1	1	7
Yin et al. [32]	2017	1	1	1	1	1	0	1	1	7
Zeng et al. [33]	2017	1	1	1	1	2	1	1	1	9
Zhu et al. [34]	2016	1	1	1	1	1	1	1	1	8

NOS = Newcastle Ottawa Scale

Supplementary table S3. Modified Jaded Scale of each randomized control trial included in the study

Study Name	Year	Was the study described as randomized?	Was the method of randomization appropriate?	Was the study described as blinding?	Was the method of blinding appropriate?	Was there a description of withdrawals and dropouts?	Was there a clear description of the inclusion / exclusion criteria?	Was the method used to assess adverse effects described?	Were the methods of statistical analysis described?	Modified Jadad Scale
Chen et al. [14]	2014	1	1	1	1	0	1	0	1	6
Doi et al. [16]	2008	1	1	1	1	0	1	0	1	6
Gil et al. [18]	2020	1	1	0	0	0	1	1	1	5
Jensen et al. [23]	2012	1	1	1	1	0	1	0	1	6
Mehta et al. [28]	2007	1	1	0.5	1	0	1	1	1	6.5