

Communication

Characterizing the effects of voluntary wheel running on cardiac SERCA function in ovariectomized mice

Bianca M. Marcella^{1,2}, Mia S. Geromella^{1,2}, Ahmad Mohammad³, Jake Sweezey-Munroe³, Rebecca E.K. MacPherson³, Val A. Fajardo^{1,2,*}

¹ Department of Kinesiology, Brock University, St. Catharines, ON, Canada

² Centre for Bone and Muscle Health, Brock University, St. Catharines, ON, Canada

³ Department of Health Sciences, Brock University, St. Catharines, ON, Canada

* Correspondence: vfajardo@brocku.ca

Supplemental Figures

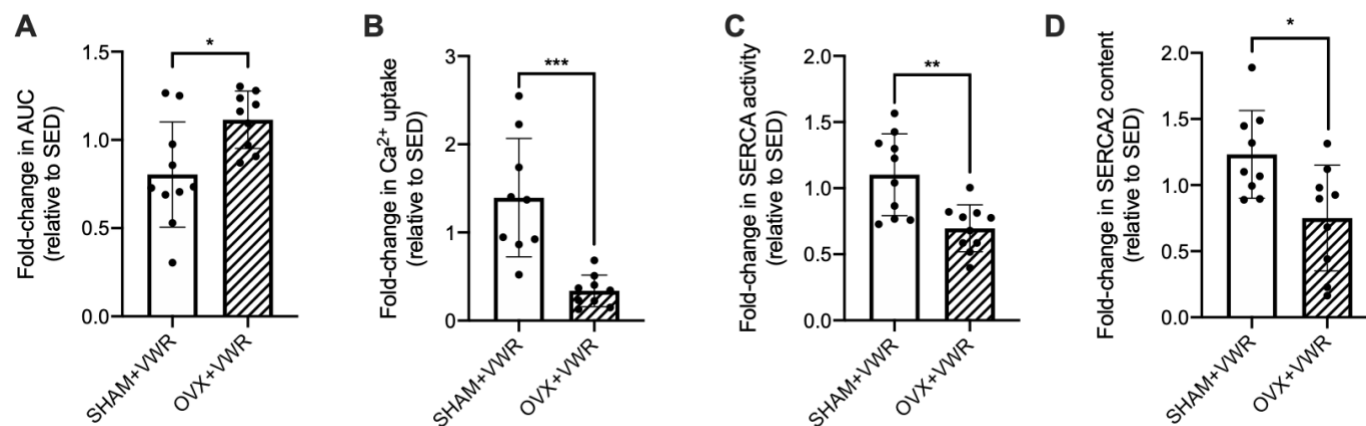


Figure S1. Fold-change analysis for SR-Ca²⁺ uptake, SERCA activity, and SERCA2a content. **(A)** Fold-change in AUC. **(B)** Fold-change in Ca²⁺ uptake. **(C)** Fold-change in SERCA activity. **(D)** Fold-change in SERCA2a content. For **(A)** – **(D)** an unpaired t-test was used. For **(A)** – **(D)** a significant difference between SHAM+VWR mice and OVX+VWR mice was found. *, **, *** - $p < 0.05$, $p < 0.01$, $p < 0.001$; $n = 10$ per group.