

Figure S2. Vector Maps with violacein pathway and empty vectors. A. SAY-IPTG-Vio. B SAY-AHL-Vio. C SAY-AHL-SapI. D SAY-IPTG-SapI

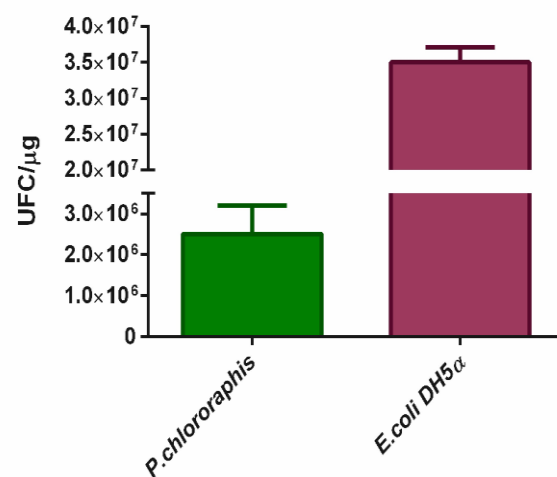


Figure S3. Electroporation efficiency. The *P. chlororaphis* and *E. coli* DH5α cultures were subjected to the laboratory efficiency protocols and the OD values of both were normalized. They were transformed with 200ng SEVA-631 supercoiled plasmid. Serial dilutions were carried out and 100 μL were seeded on plates with gentamicin.

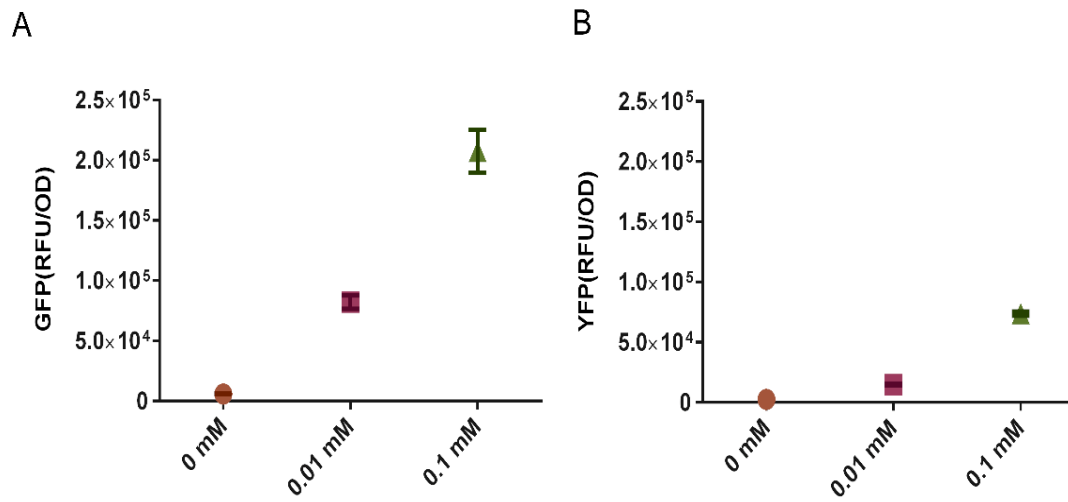


Figure S4. Normalized GFP measurements in kinetics of *P. chlororaphis* wild-type strain. A. GFP measurements normalized by OD using IPTG as inducer, vector used SAY-IPTG-GFP. B. GFP measurements normalized by OD using IPTG as inducer, vector used SAY-IPTG-YFP.

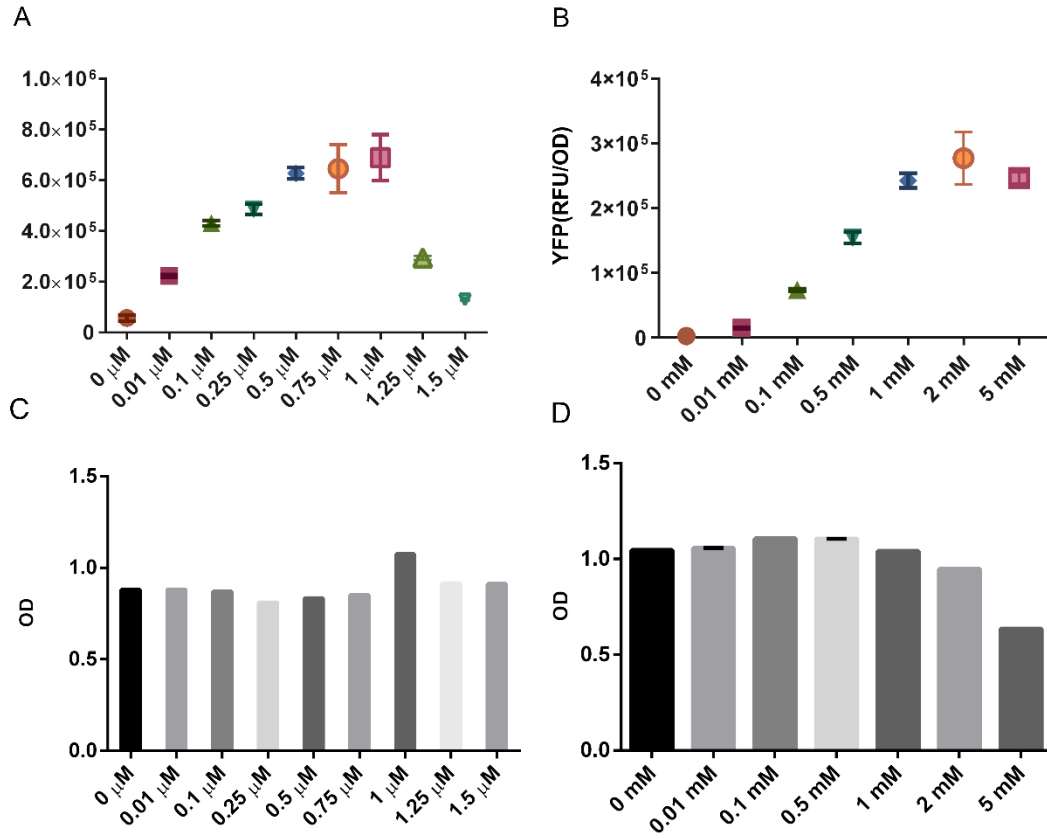


Figure S5. Normalized fluorescence production and OD measurements at induction gradient points. A. YFP reporter gene expression vector, measured in Relative Fluorescence Units (RFU) normalized by optical density using different concentrations of exogenous C6-AHL as inducer, (OD). B. Displays the response of YFP induction to a gradient of IPTG induction at different concentrations. C. OD measurements at vector SAY-AHL-YFP induction points. D. OD measurements at vector SAY-IPTG-YFP induction points.

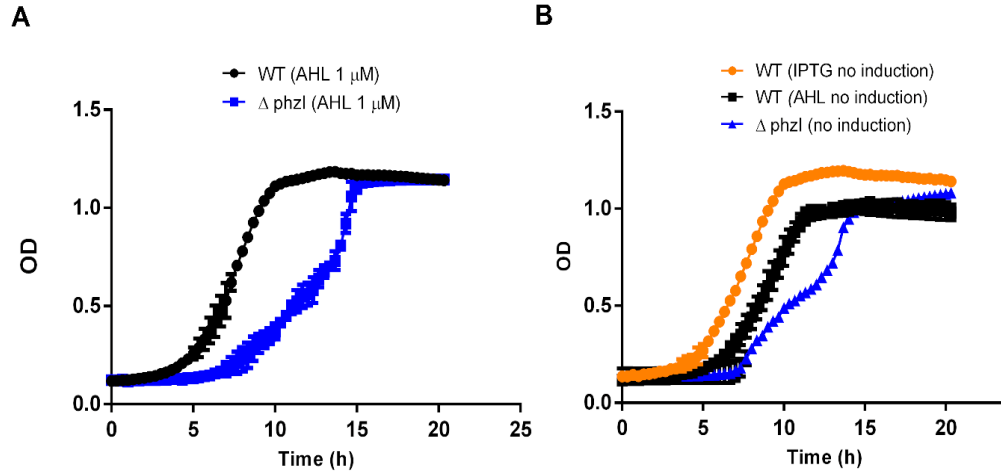


Figure S6. OD measurements in kinetics of *P. chlororaphis* Δ phzI mutant and wild-type strain *P. chlororaphis* ATCC 9446. A. OD measurements in *P. chlororaphis*, using exogenous addition of C6-AHL at 1 μ M on wild-type *P. chlororaphis* and Δ phzI mutant. B. OD measurements on assay of autoinduction capacity of SAY-AHL-YFP vector in wild type (WT) and Δ phzI mutant strains. SAY-IPTG at 0 mM induction is shown as a reference.

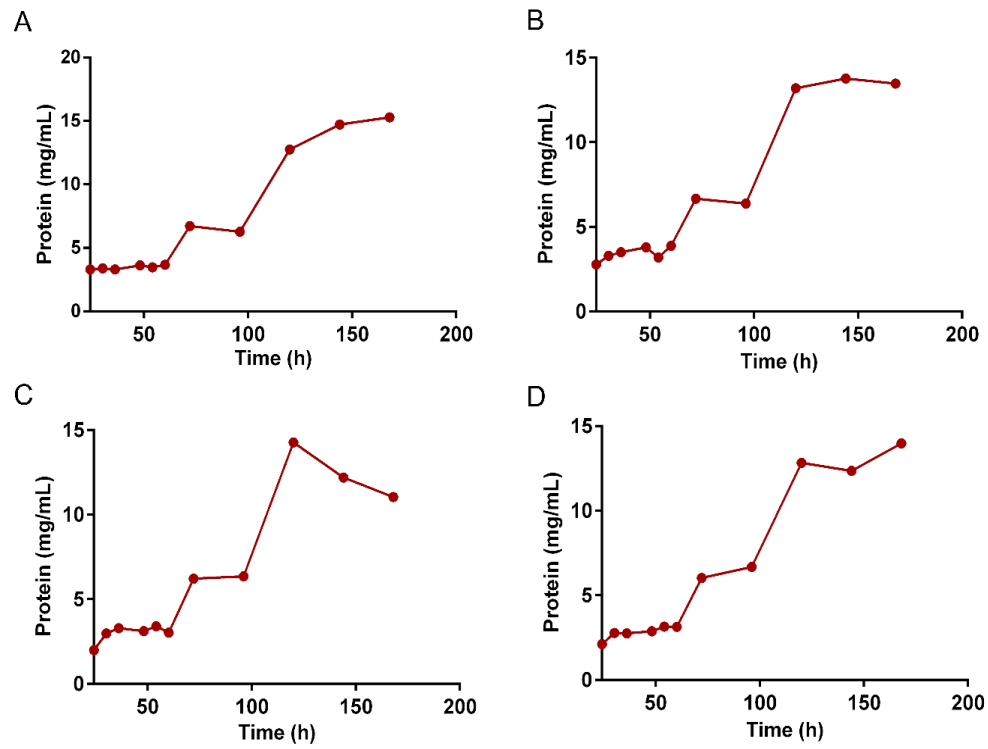


Figure S7. Total protein measurements with SAY-AHL-Vio vector in shake flasks. A. SAY-AHL-Vio, M9-sucrose at 1 μ M of induction. B. SAY-AHL-Vio, M9-glucose at 1 μ M of induction. C. SAY-IPTG-Vio, M9-glucose at 1 mM of induction. D. SAY-IPTG-Vio, M9-sucrose at 1 mM of induction.

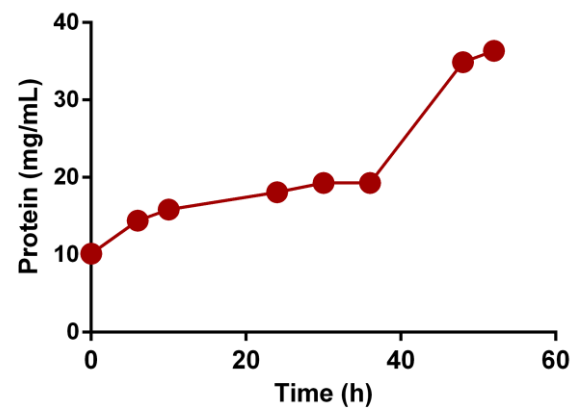


Figure S8. Total protein quantified on bioreactor. Plasmid SAY-AHL-Vio