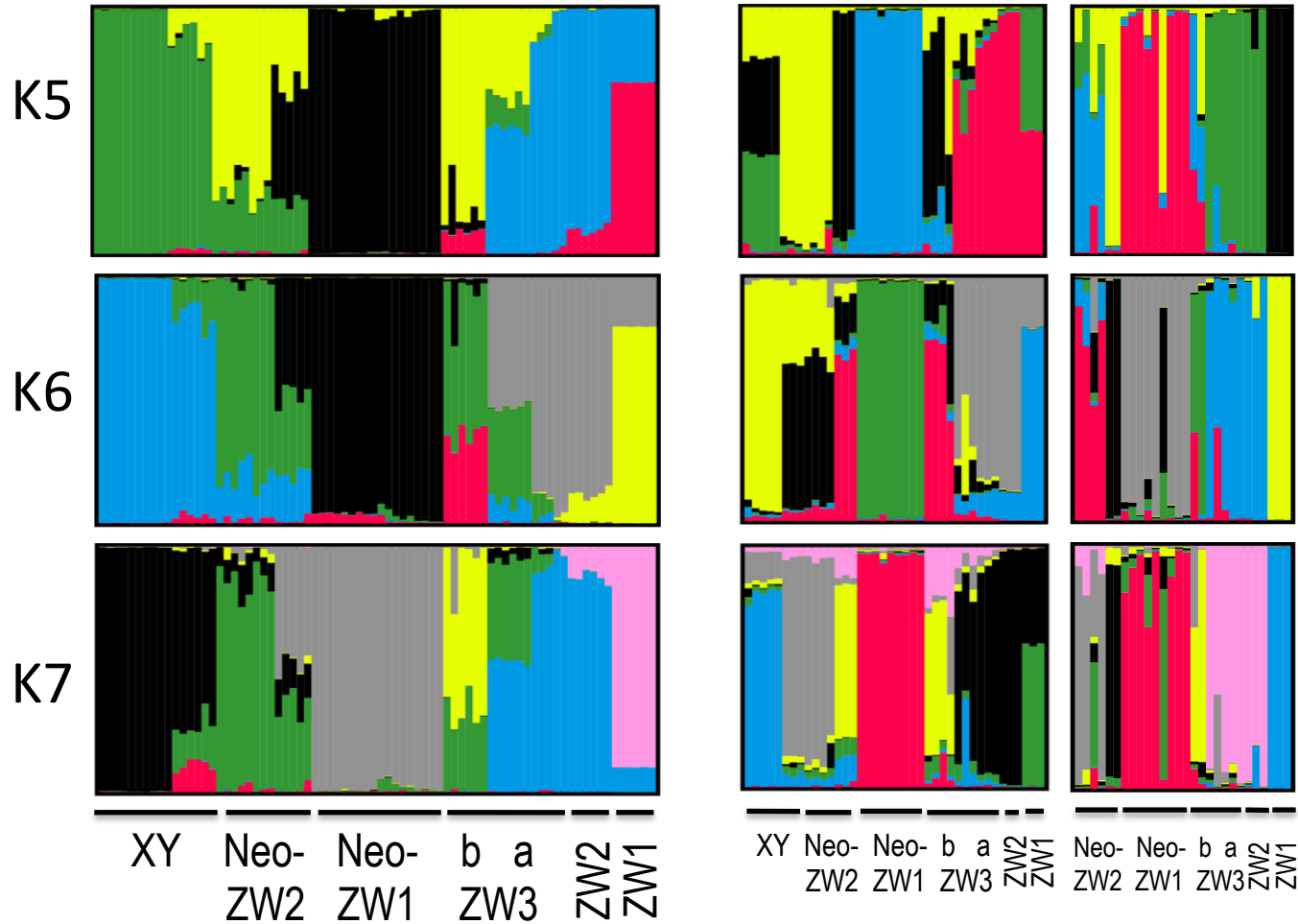


# DNA

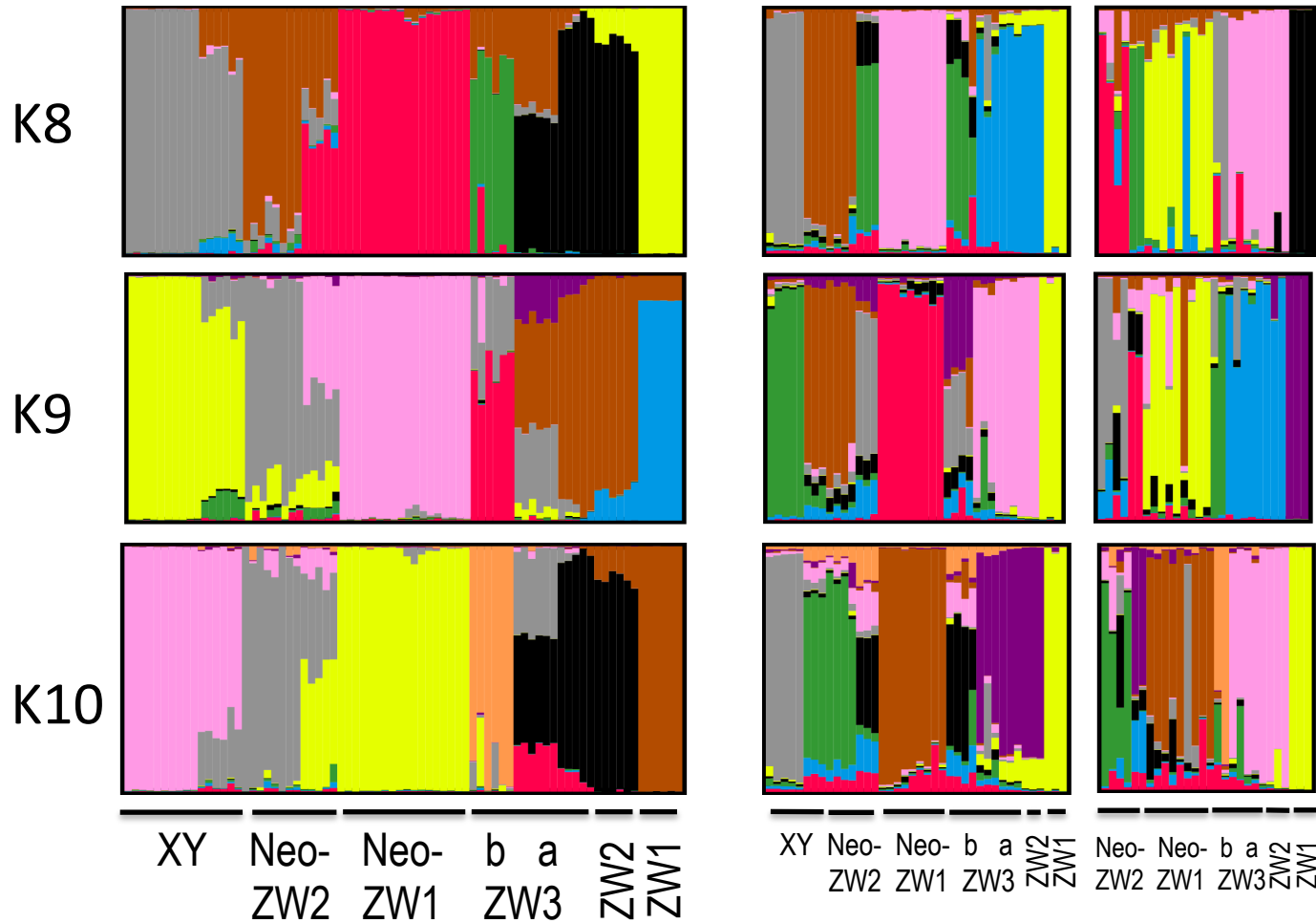
**Supplemental information (Figures) for:**

**W chromosome evolution by repeated recycling  
in the frog *Glandirana rugosa***

Mitsuaki Ogata, Foyez Shams , Yuri Yoshimura, Tariq Ezaz and Ikuo Miura



**Figure S1.** Histograms of STRUCTURE assignment test for autosomal 1626 SNPs and 220 sex-linked SNPs. K values (No. of clusters) are 5, 6 and 7. The populations used for the analysis and their locations are shown in Table 1 and Figure 1. The sex-linked SNPs of heterogametic XY males and ZW females were used for investigating genomic structures of ZW and XY chromosomes, while homogametic ZZ males were used for those of Z chromosomes. Arrows indicate introgressions of genomes from XY group to ZW group.



**Figure S2.** Histograms of STRUCTURE assignment test for autosomal 1626 SNPs and 220 sex-linked SNPs. K values (No. of clusters) are 8, 9 and 10. The populations used for the analysis and their locations are shown in Table 1 and Figure 1. The sex-linked SNPs of heterogametic XY males and ZW females were used for investigating genomic structures of ZW and XY chromosomes, while homogametic ZZ males were used for those of Z chromosomes. Arrows indicate introgressions of genomes from XY group to ZW group.