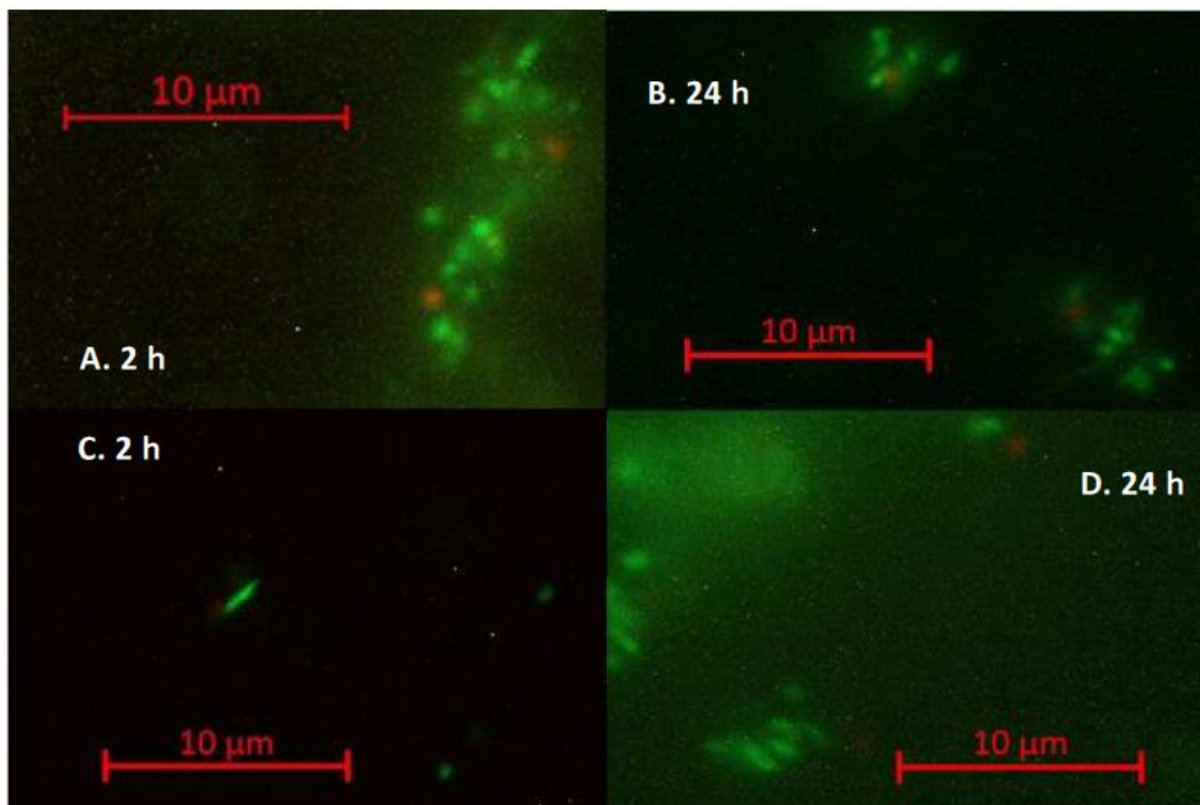


Supplementary Figure S1. *Campylobacter* phages of classes I, II and III with host campylobacters in broth culture under microaerobic conditions at 4 °C. Panels (A) Class I phage12 with host *C. jejuni* 11168; (B) Group II CP20 phage with host *C. jejuni* HPC5; (C) Group III CP8 phage with host *C. jejuni* PT14; D Group III CP30A phage with host *C. jejuni* 12662. The blue line represents the non-infected bacterial viable count; the yellow line the bacteria viable count with phage; the orange dashed line the phage titre. The operational MOIs of the infected cultures appear in the relevant panels. The error bars represent the standard deviations of three technical replicates.

Supplementary Figure S2



Fluorescent microscope images of Baclight stained *Campylobacter jejuni* PT14 cultures and cultures infected with bacteriophage CP8 at 4 °C. Culture samples were stained, applied to glass microscope slides and fluorescence microscope images recorded at time points indicated post mixing of the phage with the host bacteria (MOI 10) in panels A and B and in the absence of phage panels C and D. Syto 9 stains intact cells green and propidium iodide stains permeable cells red.