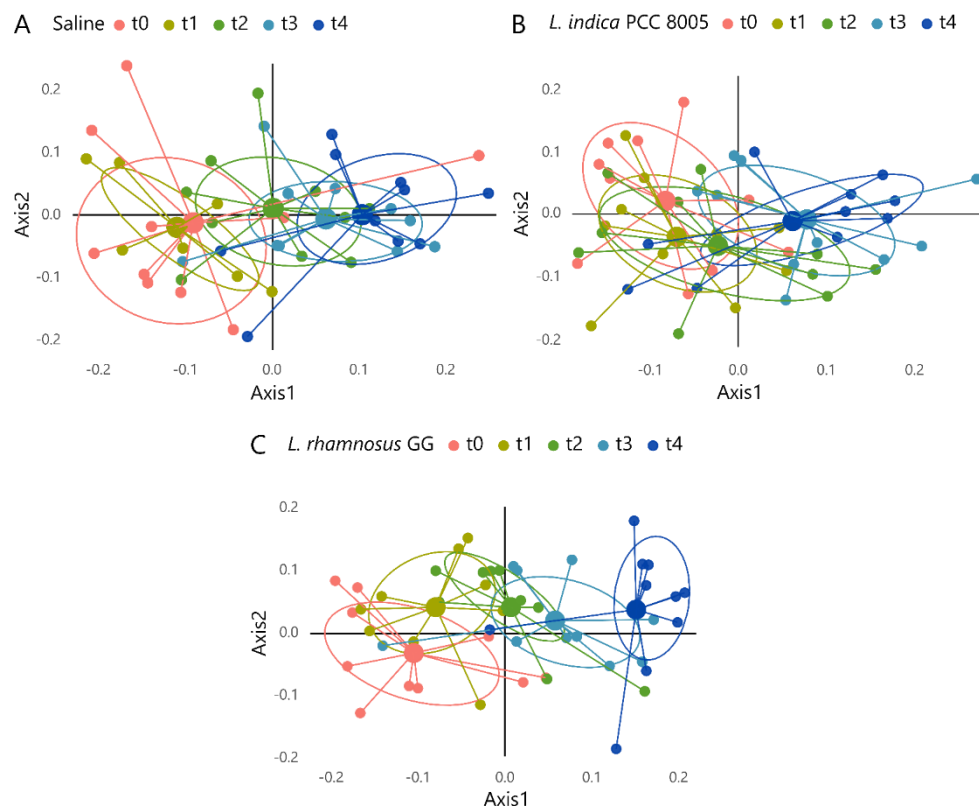
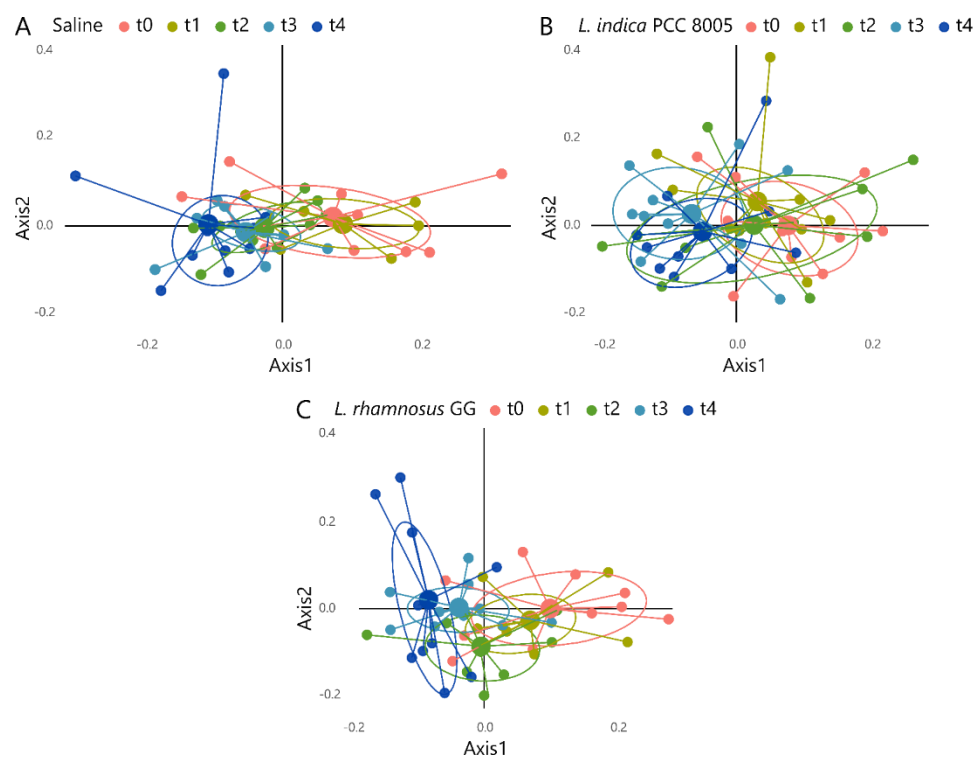


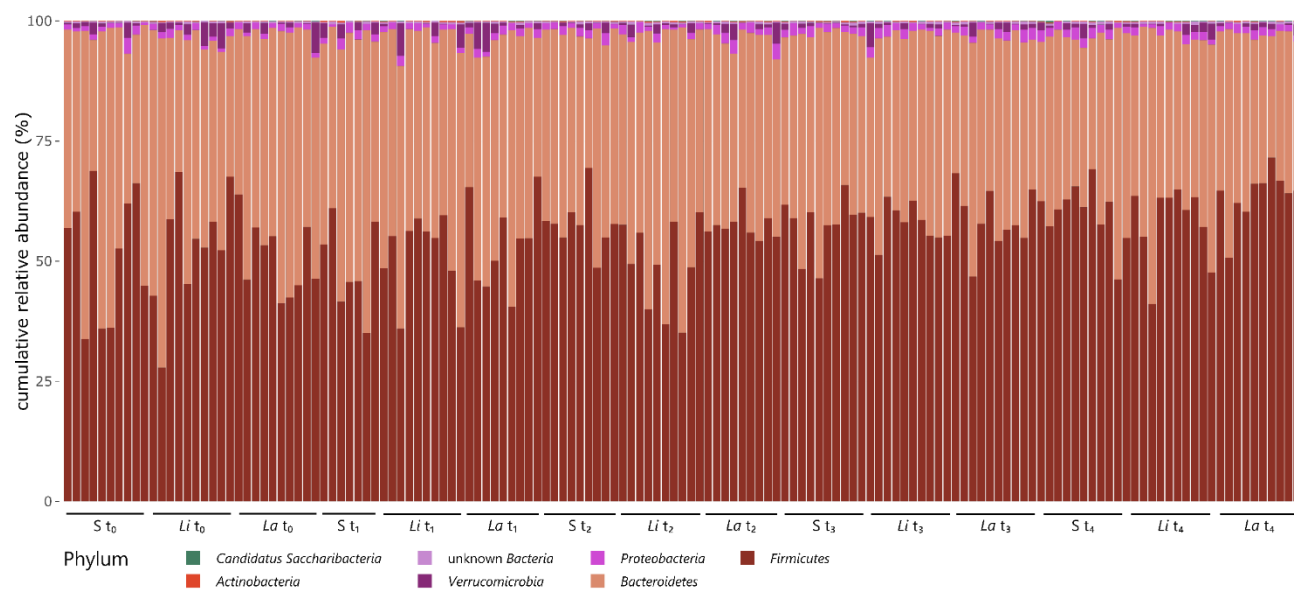
Supplementary Figures



Supplementary Figure S1. Weighted UniFrac NMDS plots of (A) Saline, (B) *L. indica* PCC 8005 and (C) *L. rhamnosus* GG administered mice showing beta diversity with consideration of relative abundances, $n=10$ per group.



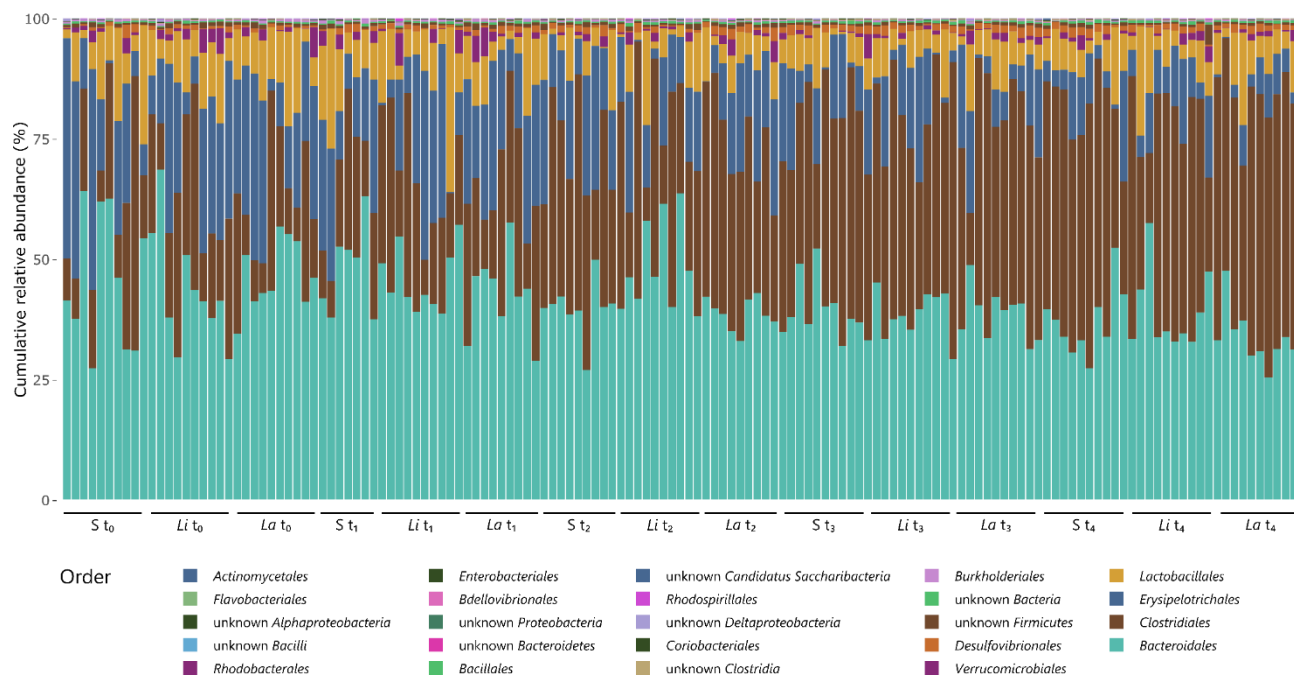
Supplementary Figure S2. Unweighted UniFrac NMDS plots of (A) Saline, (B) *L. indica* PCC 8005 and (C) *L. rhamnosus* GG administered mice showing beta diversity without consideration of relative abundances, $n=10$ per group.



Supplementary Figure S3. Stacked bar plots representing the taxonomic profile evolution over the entire experimental course, at the level of phylum following supplementation with saline (S), *L. indica* PCC 8005 (Li) and *L. rhamnosus* GG (La), $n=10$.



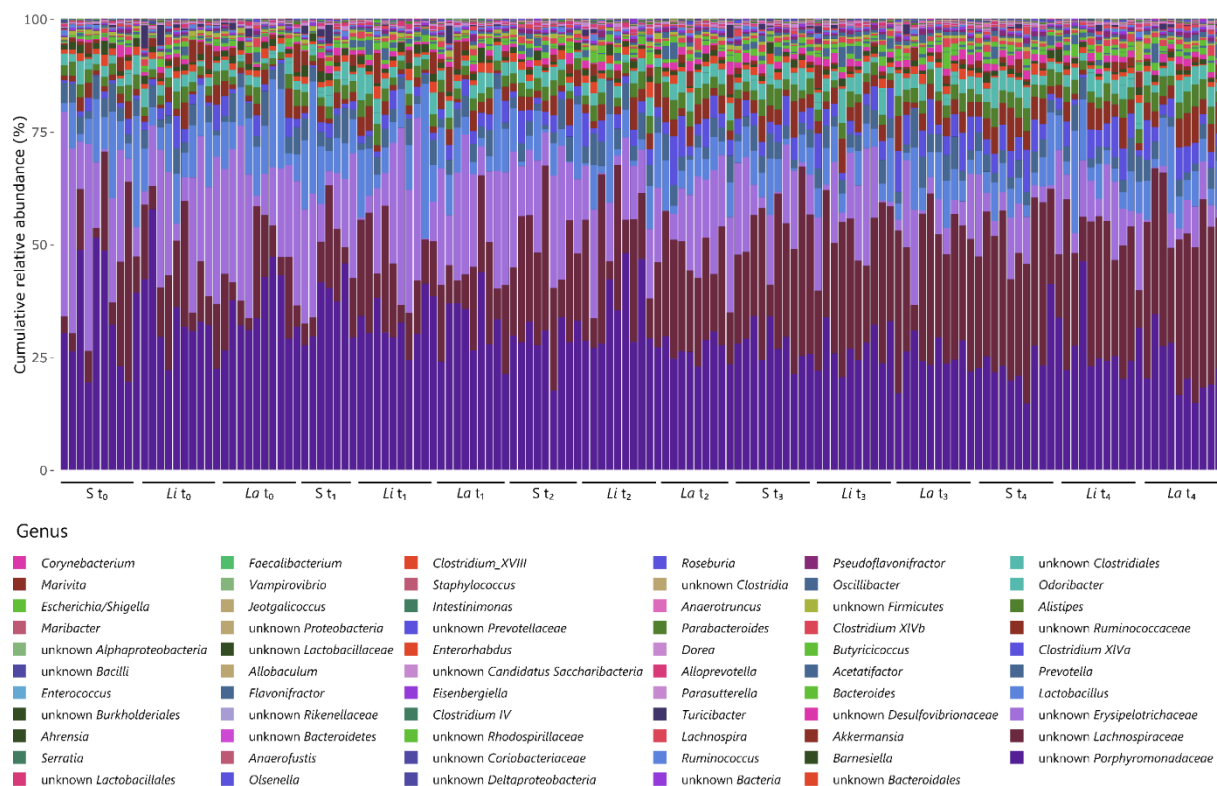
Supplementary Figure S4. Stacked bar plots representing the taxonomic profile evolution over the entire experimental course, at the level of class following supplementation with saline (S), *L. indica* PCC 8005 (Li) and *L. rhamnosus* GG (La), $n=10$.



Supplementary Figure S5. Stacked bar plots representing the taxonomic profile evolution over the entire experimental course, at the level of order following supplementation with saline (S), *L. indica* PCC 8005 (Li) and *L. rhamnosus* GG (La), $n=10$.



Supplementary Figure S6. Stacked bar plots representing the taxonomic profile evolution over the entire experimental course, at the level of family following supplementation with saline (S), *L. indica* PCC 8005 (Li) and *L. rhamnosus* GG (La), $n=10$.



Supplementary Figure S7. Stacked bar plots representing the taxonomic profile evolution over the entire experimental course, at the level of genus following supplementation with saline (S), *L. indica* PCC 8005 (Li) and *L. rhamnosus* GG (La), $n=10$.