

# When and Where Did They Strand? The Spatio-Temporal Hotspot Patterns of Cetacean Stranding Events in Indonesia

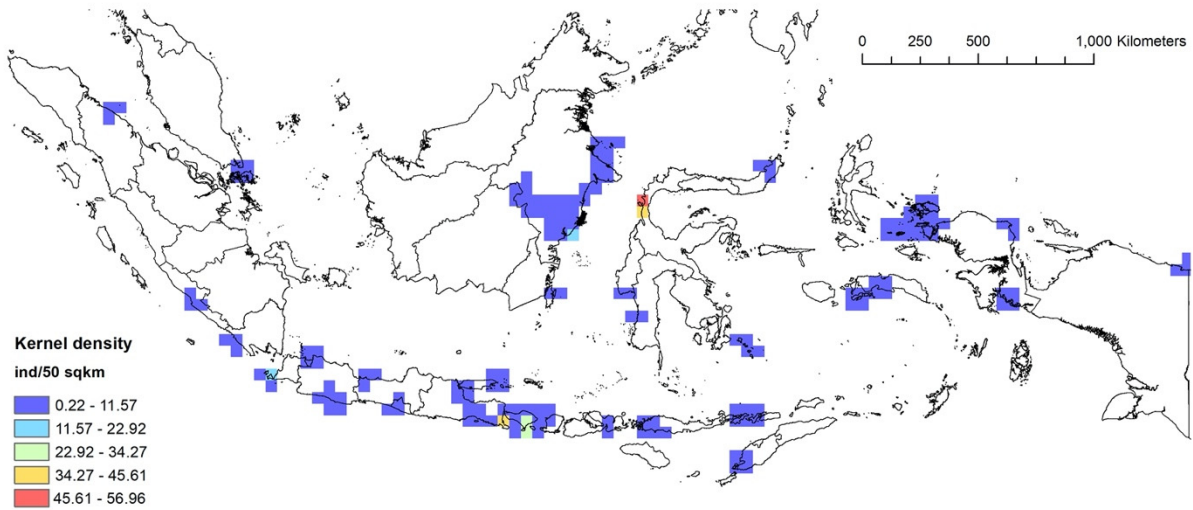
Putu Liza Kusuma Mustika <sup>1,2,3,4,\*</sup>, Kathryn K. High <sup>5,6</sup>, Mochamad Iqbal Herwata Putra <sup>7</sup>, Achmad Sahri <sup>8</sup>, I Made Jaya Ratha <sup>1,3,4</sup>, Muhammad Offal Prinanda <sup>1,3</sup>, Firdaus Agung <sup>9</sup>, Februanty S. Purnomo <sup>10</sup> and Danielle Kreb <sup>11</sup>

- <sup>1</sup> Reef Check Indonesia, Jl. Tukad Balian Gg. 43 No. 1A, Renon, Kec. Denpasar Selatan, Kota Denpasar, Bali 80234, Indonesia
  - <sup>2</sup> College of Business, Law and Governance, James Cook University, Townsville, Queensland 4811, Australia
  - <sup>3</sup> Whale Stranding Indonesia, Jl. Kalibaru Timur, Cilincing, Jakarta 14110, Indonesia
  - <sup>4</sup> Cetacean Sirenian Indonesia, Jl. Kalibaru Timur, Cilincing, Jakarta 14110, Indonesia
  - <sup>5</sup> Ornithology and Mammalogy Department, California Academy of Sciences, 55 Music Concourse Drive, Golden Gate Park, San Francisco, CA 94118, USA
  - <sup>6</sup> Estuary & Ocean Science Center, San Francisco State University, Tiburon, CA 94920, USA
  - <sup>7</sup> Elasmobranch and Charismatic Species Program, Konservasi Indonesia, Jakarta 12510, Indonesia
  - <sup>8</sup> Research Center for Oceanography, National Research and Innovation Agency, Jl. Pasir Putih 1, Ancol Timur, Jakarta 14430, Indonesia
  - <sup>9</sup> The Directorate for Marine Conservation and Biodiversity, Ministry of Marine Affairs and Fisheries, Gedung Mina Bahari III Lt. 11, Jl. Medan Merdeka Timur No. 16, Jakarta 10110, Indonesia
  - <sup>10</sup> Indonesia Climate Change Trust Fund, Lippo Kuningan 15th Floor Jl. H.R. Rasuna Said Kav.B-12, Jakarta 12940, Indonesia
  - <sup>11</sup> Yayasan Konservasi RASI, Komplek Pandan Harum Indah Blok C52, Samarinda 75124, East Kalimantan
- \* Correspondence: putuliza@gmail.com

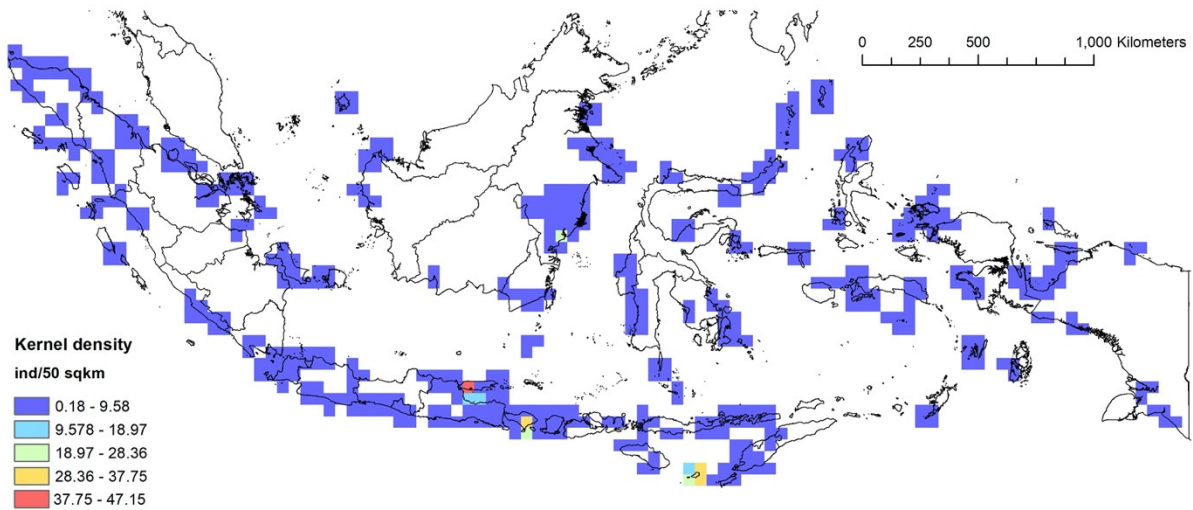
**Table S1.** The recap of species-specific stranding events in Indonesia (1995–2021).

No	Latin name	English name	Cases	Percent (out of n=568)
1	<i>Balaenoptera acutorostrata</i>	Minke whale	2	0.35
2	<i>Balaenoptera edeni</i>	Bryde's whale	16	2.82
3	<i>Balaenoptera musculus</i>	Blue whale	6	1.06
	<i>Balaenopteridae</i>	unidentified baleen whale	25	4.40
	<i>Delphinidae</i>	unidentified dolphins	12	2.11
4	<i>Delphinus capensis</i>	Long-beaked common dolphin	1	0.18
5	<i>Feresa attenuata</i>	Pygmy killer whale	12	2.11
6	<i>Globicephala macrorhynchus</i>	Short-finned pilot whale	31	5.46
7	<i>Grampus griseus</i>	Risso's dolphin	13	2.29
8	<i>Kogia breviceps</i>	Pygmy sperm whale	5	0.88
9	<i>Kogia sima</i>	Dwarf sperm whale	11	1.94
	<i>Kogia sp.</i>		2	0.35
10	<i>Lagenodelphis hosei</i>	Fraser's dolphin	7	1.23
11	<i>Megaptera novaeangliae</i>	Humpback whale	10	1.76
12	<i>Mesoplodon densirostris</i>	Blainville's beaked whale	2	0.35
13	<i>Neophocaena phocaenoides</i>	Finless porpoise	24	4.23
14	<i>Orcaella brevirostris</i>	Irrawaddy dolphin	102	17.96
15	<i>Orcinus orca</i>	Killer Whale	3	0.53
16	<i>Peponocephala electra</i>	Melon Headed Whale	14	2.46
17	<i>Physeter macrocephalus</i>	Sperm whale	75	13.20
18	<i>Pseudorca crassidens</i>	False killer whale	6	1.06
19	<i>Sousa chinensis</i>	Indo-Pacific humpback dolphin	6	1.06
20	<i>Stenella attenuata</i>	Pantropical spotted dolphin	9	1.58
21	<i>Stenella coeruleoalba</i>	Striped dolphin	3	0.53
22	<i>Stenella longirostris</i>	Spinner dolphin	29	5.11
	<i>Stenella sp.</i>		1	0.18
23	<i>Steno bredanensis</i>	Rough-toothed dolphin	8	1.41
24	<i>Tursiops aduncus</i>	Indo-Pacific bottlenose dolphin	12	2.11
	<i>Tursiops sp.</i>	Bottlenose dolphin	11	1.94

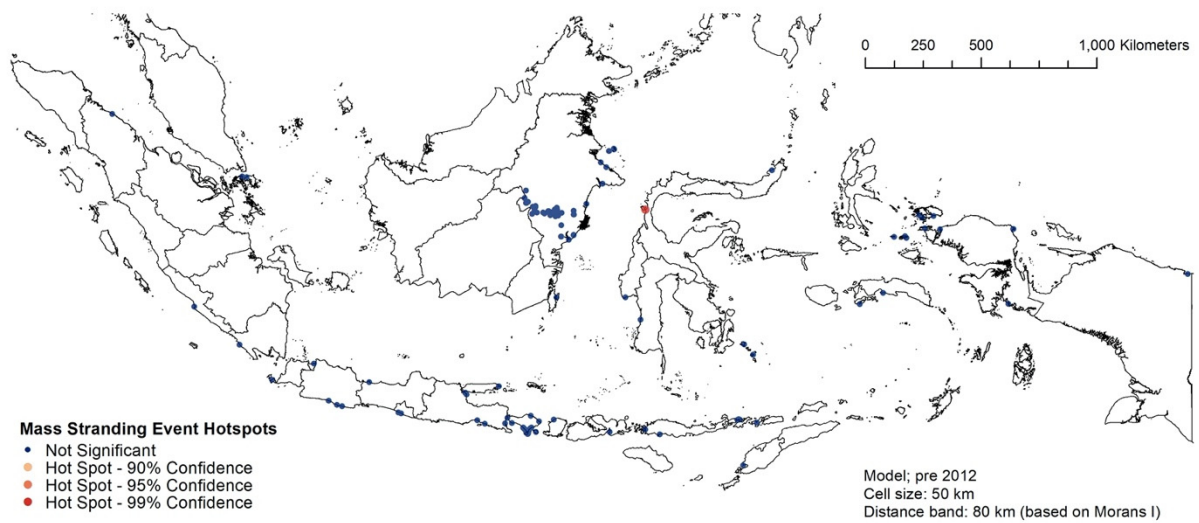
25	<i>Tursiops truncatus</i>	Common bottlenose dolphin	4	0.70
	unidentified species	unidentified species	95	16.73
26	<i>Ziphius cavirostris</i>	Cuvier's beaked whale	11	1.94
<b>TOTAL</b>			<b>568</b>	



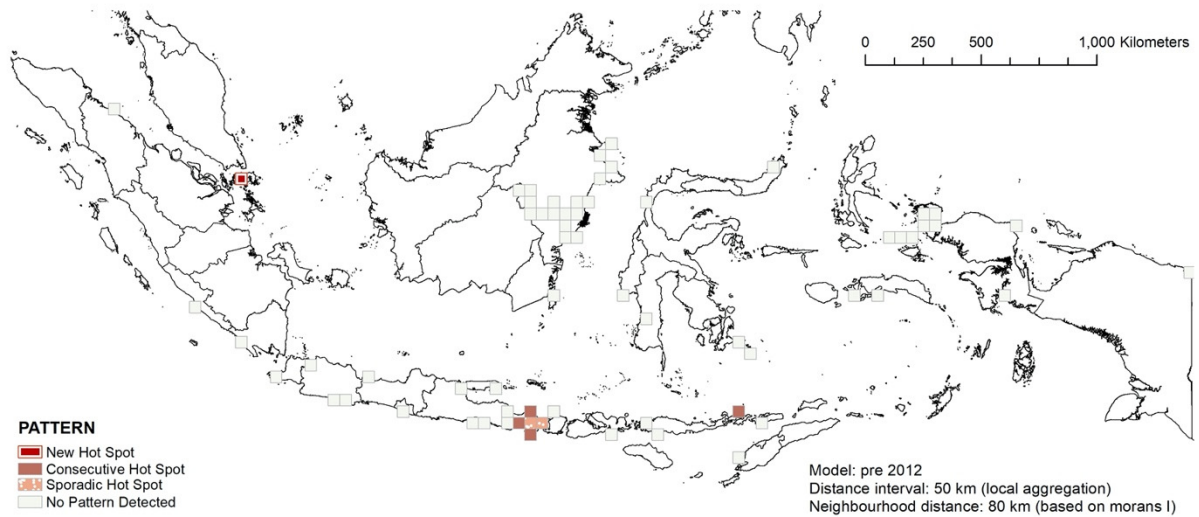
**Figure S1.** The kernel density analysis of the 1995–2011 stranding events based on the number of stranded individuals.



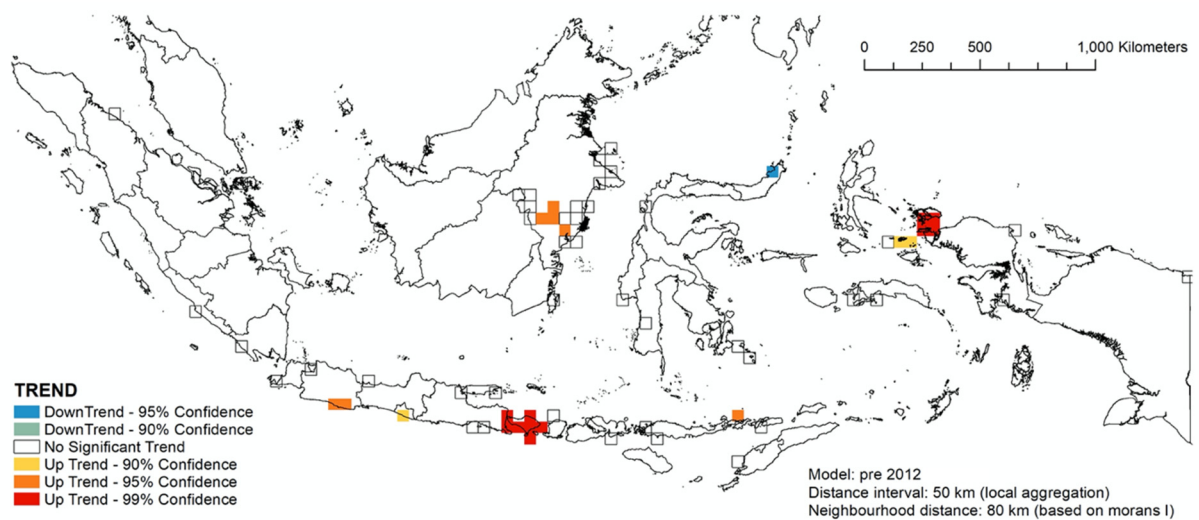
**Figure S2.** The kernel density analysis of the 2012–2021 stranding events based on the number of stranded individuals.



**Figure S3.** The spatial hotspot analysis of mass stranding events of 1995–2011.



**Figure S4.** The space-time hotspot patterns of the 1995–2011 stranding events.



**Figure S5.** The temporal hotspot patterns of the 1995–2011 stranding events.