

Figure S1: Topographic plan indicating the location of the tomb in blue (207a1). After Lilimpaki-Akamati 2007, dr. 1.

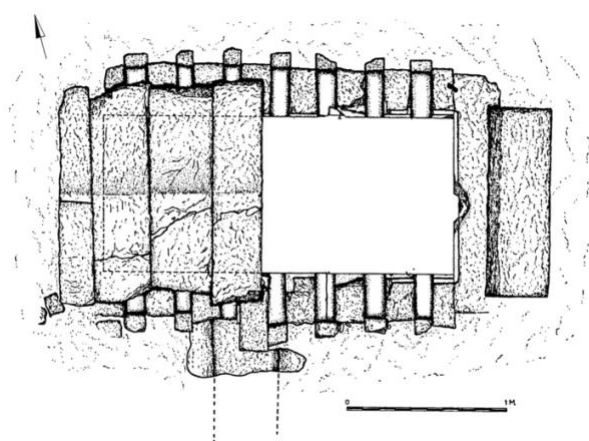


Figure S2: Top view drawing of tomb. After Lilimpaki-Akamati 2007, dr. 2.

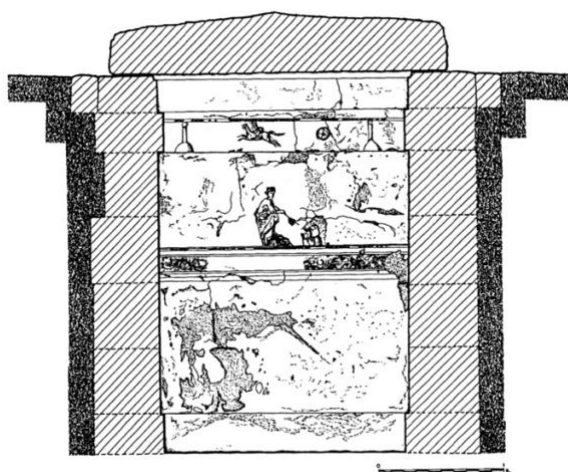


Figure S3: Drawing of the actual state of the west interior wall of the tomb. After Lilimpaki-Akamati 2007, dr. 10.

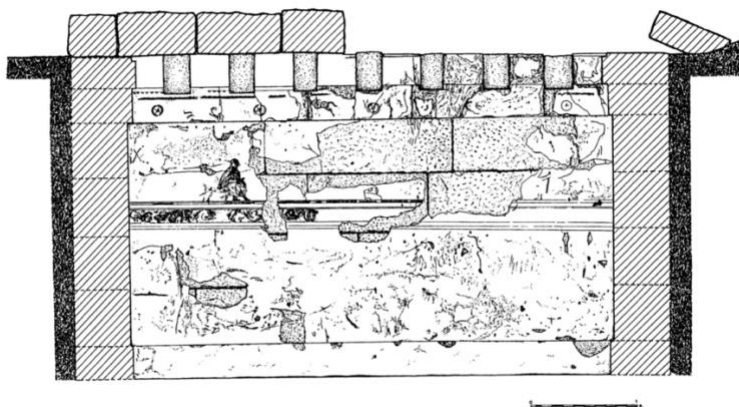


Figure S4: Drawing of the actual state of the north interior wall of the tomb. After Lilimpaki-Akamati 2007, dr. 12.

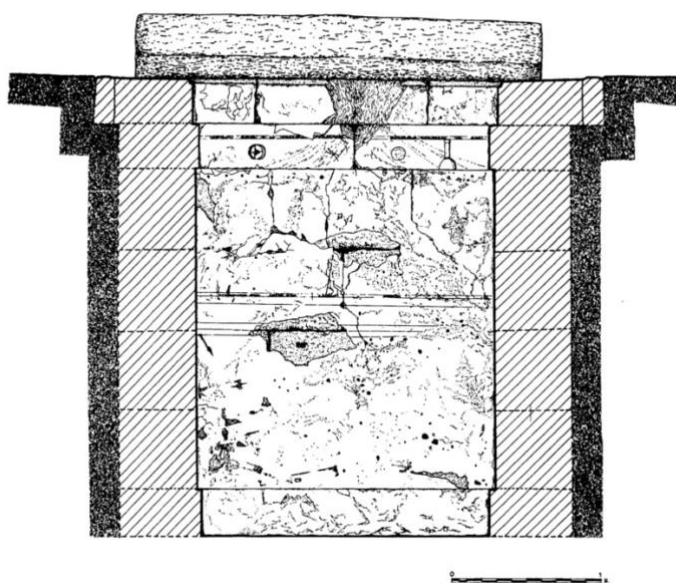


Figure S5: Drawing of the actual state of the east interior wall of the tomb. After Lilimpaki-Akamati 2007, dr. 11.

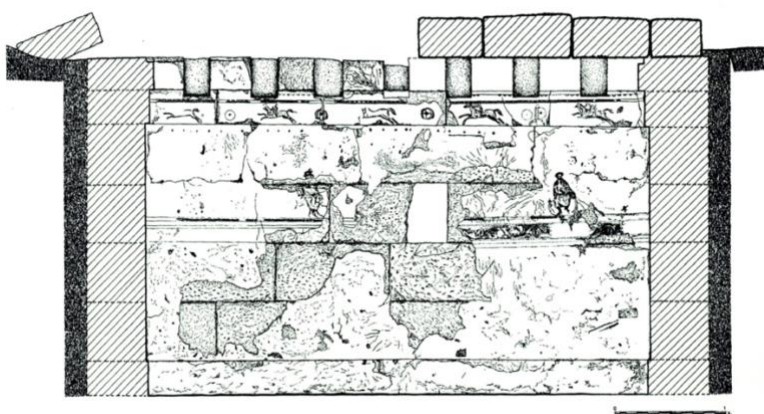


Figure S6: Drawing of the actual state of the south interior wall of the tomb. After Lilimpaki-Akamati 2007, dr. 13.

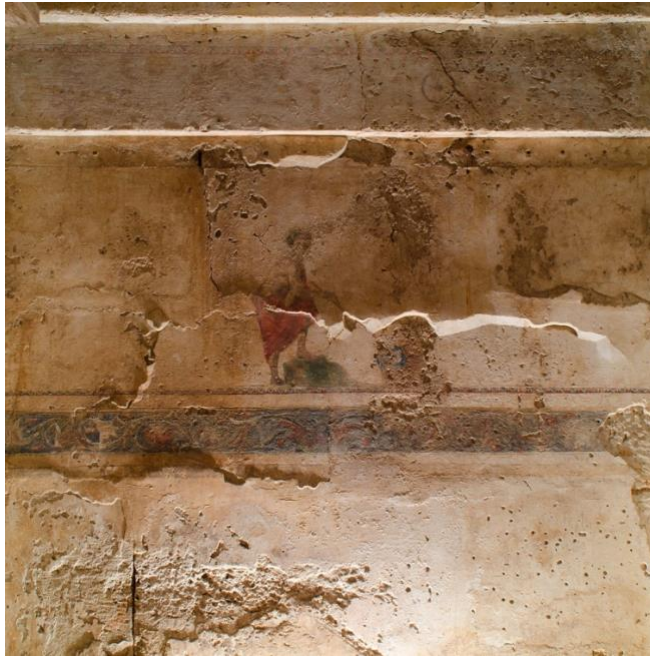


Figure S7: Plaster layer in raking light. Photo Giovanni Verri © Ephorate of Antiquities of Pella, Ministry of Culture and Sports.



Figure S8a-b: Horse frieze in 2001 (after Lilimpaki-Akamati 2007, pl. 53) and in 2018 (photo Christos Simatos © Ephorate of Antiquities of Pella, Ministry of Culture and Sports) showing colour degradation. Figure S9a-b: Figure on the south wall of the tomb in 2001 (after Lilimpaki-Akamati 2007, pl. 47) and in 2018 (photo Christos Simatos © Ephorate of Antiquities of Pella, Ministry of Culture and Sports) showing colour degradation.

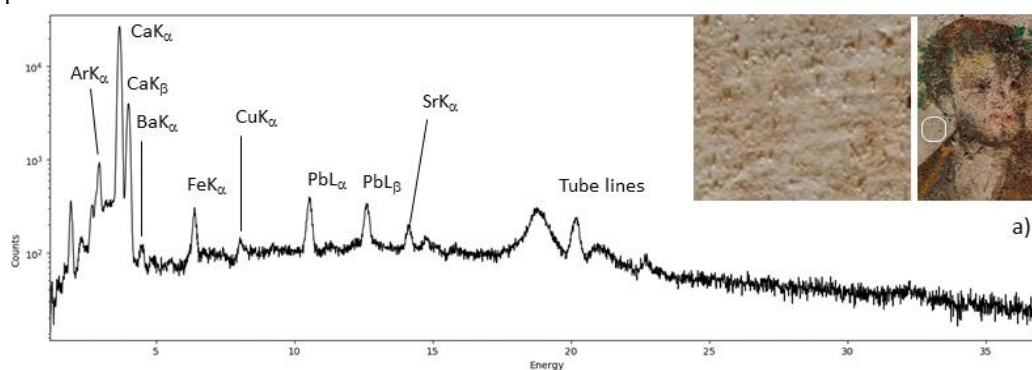


Figure S10: Aigai, 'Tomb of Persephone', figure of Hades, detail (photo © Ephorate of Antiquities of Emathia, Ministry of Culture and Sports).

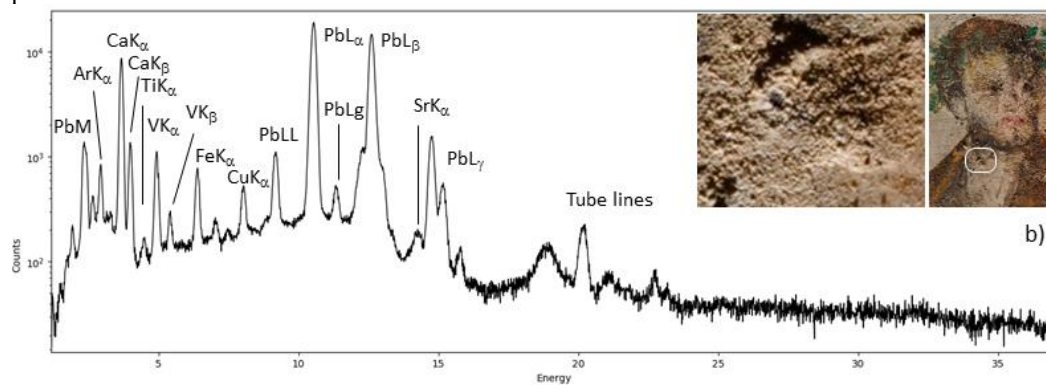


Figures S11-S12: Scroll frieze, north wall in normal and raking light. Photos Christos Simatos © Ephorate of Antiquities of Pella, Ministry of Culture and Sports.

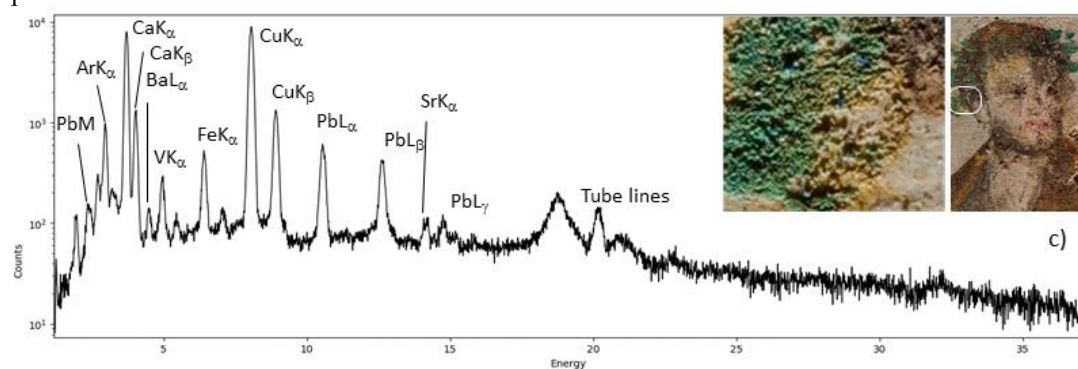
XRF Spectrum location a



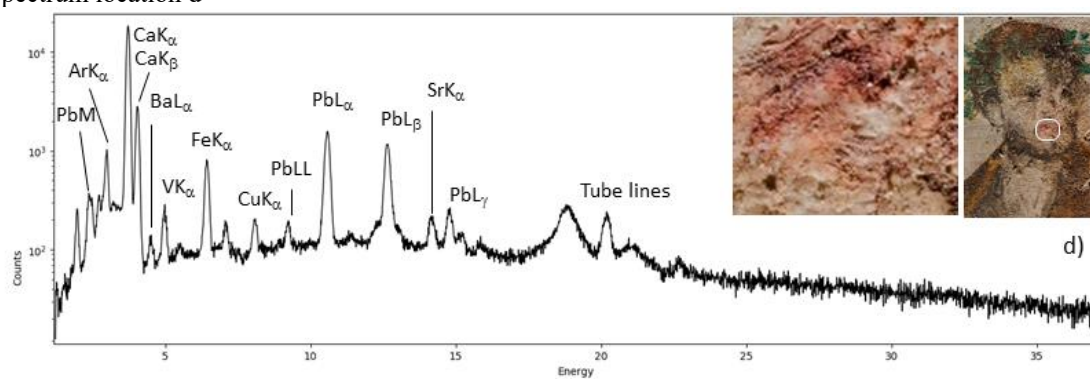
XRF Spectrum location b



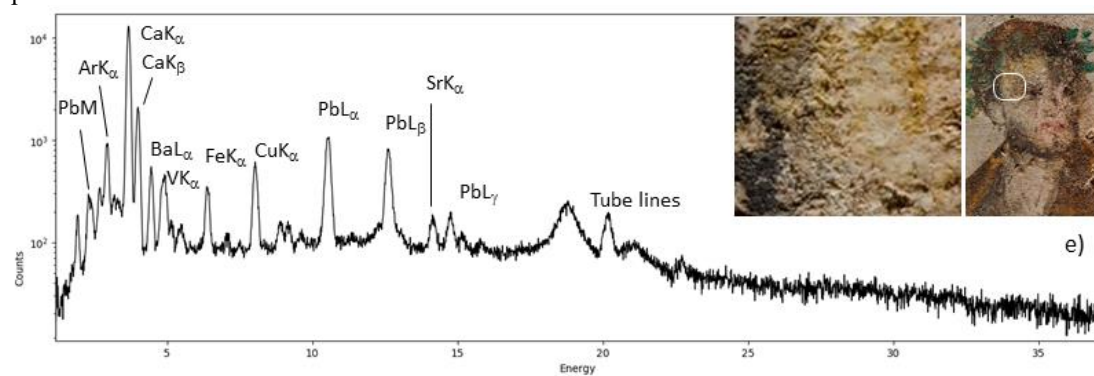
XRF Spectrum location c



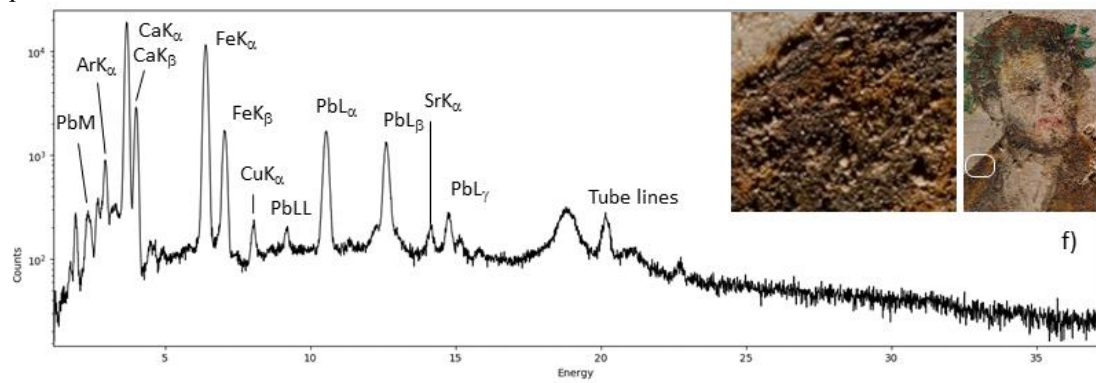
XRF Spectrum location d



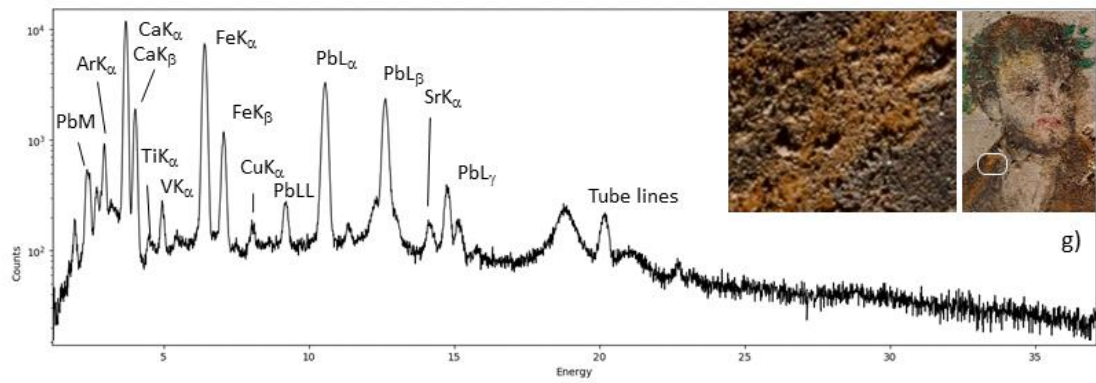
XRF Spectrum location e



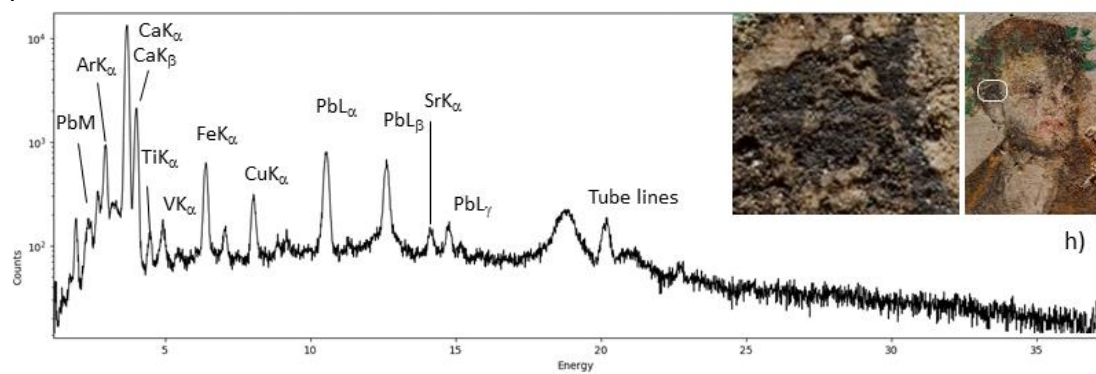
XRF Spectrum location f



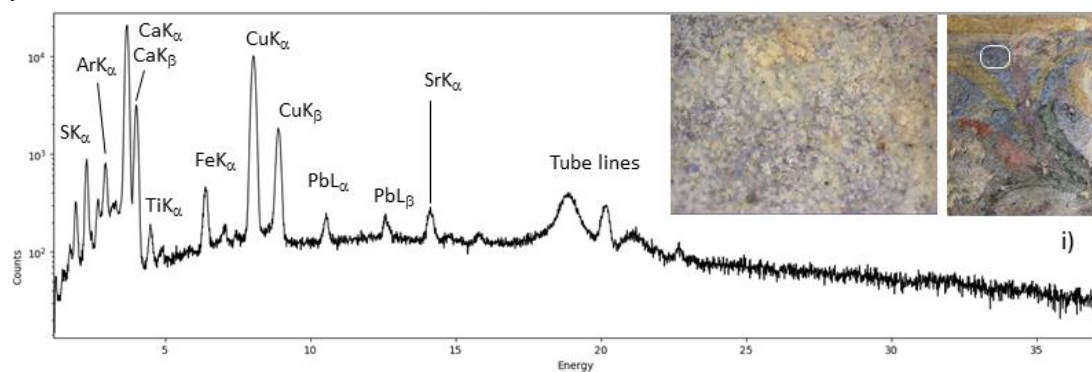
XRF Spectrum location g



XRF Spectrum location h



XRF Spectrum location i



Figures S13a-q: XRF spectra with basemaps (© Giovanni Verri).

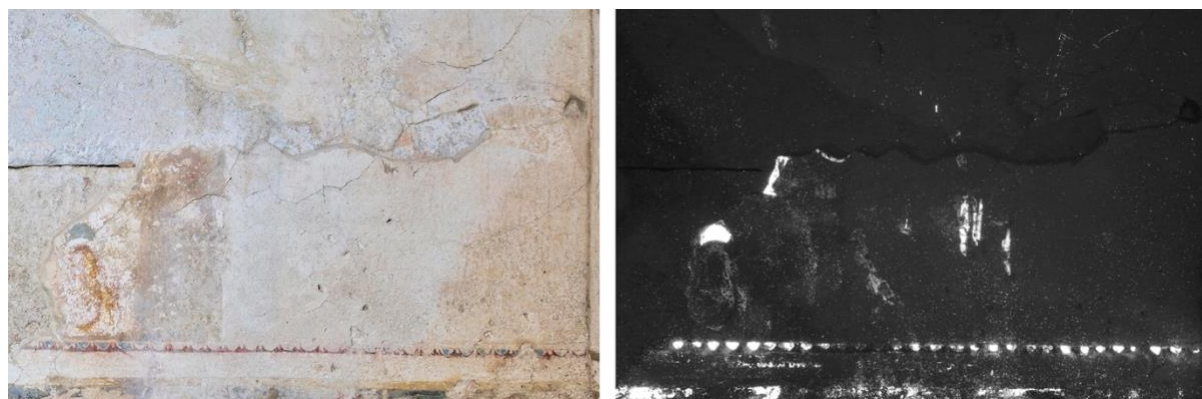


Figure S14a-b: standing figure on the north wall in normal light and VIL. Photos Giovanni Verri © Ephorate of Antiquities of Pella, Ministry of Culture and Sports.



Figure S15a-b: figure of the man on the east wall in normal light and VIL. Photos Giovanni Verri © Ephorate of Antiquities of Pella, Ministry of Culture and Sports.