

## Augustus

---



---

FORS: red ochre

---

XRF

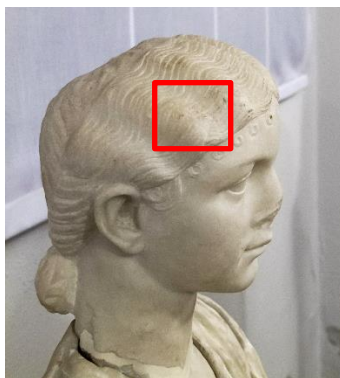
major: Ca, Fe

traces: Pb, Mn, Sr, S, K

---

## Iulia Livilla

---



---

FORS: red ochre

---

XRF

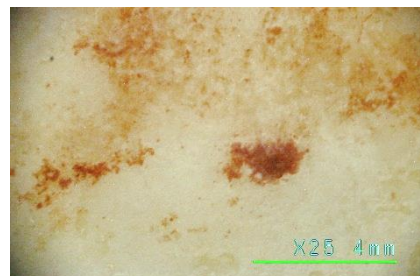
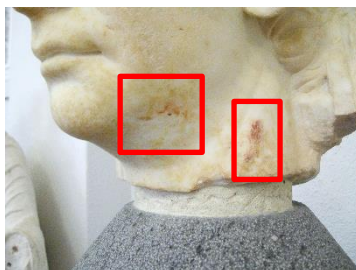
major: Ca, Fe

traces: Pb, Mn, Sr, S, K

---

## Claudius

---



---

FORS: red ochre

---

XRF

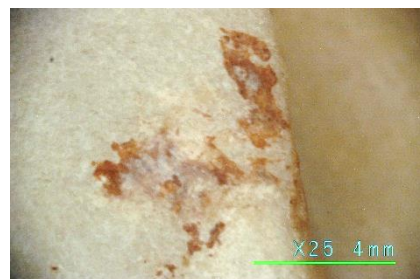
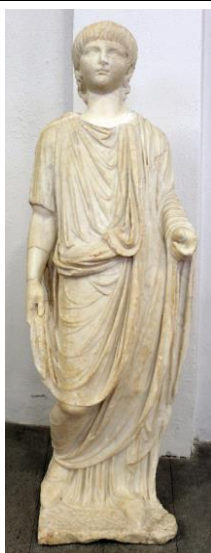
major: Ca, Fe, S

traces: Mn, Sr, K

---

## Octavia

---



---

FORS: red ochre

---

XRF

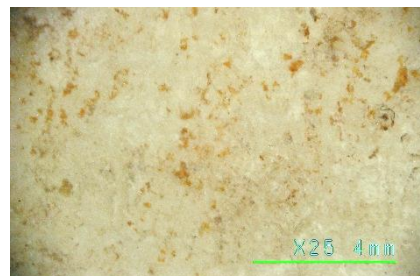
major: Ca, Fe, S

traces: Pb, Mn, Sr, K,

---

### Fragment with leg of a second cuirassed statue

---



---

FORS: red ochre

XRF

major: Ca, Fe, S, Pb

traces: Mn, Sr, K, Zn

---