

Figure S1. 2012 time series of observed daily mean soil CO₂ efflux (F_{soil}), soil temperature (T_s), and volumetric soil moisture (θ) for soil near patches of shrub (black) and in intercanopy space (gray) from the shrubland. Also shown is gross ecosystem photosynthesis (GEP).

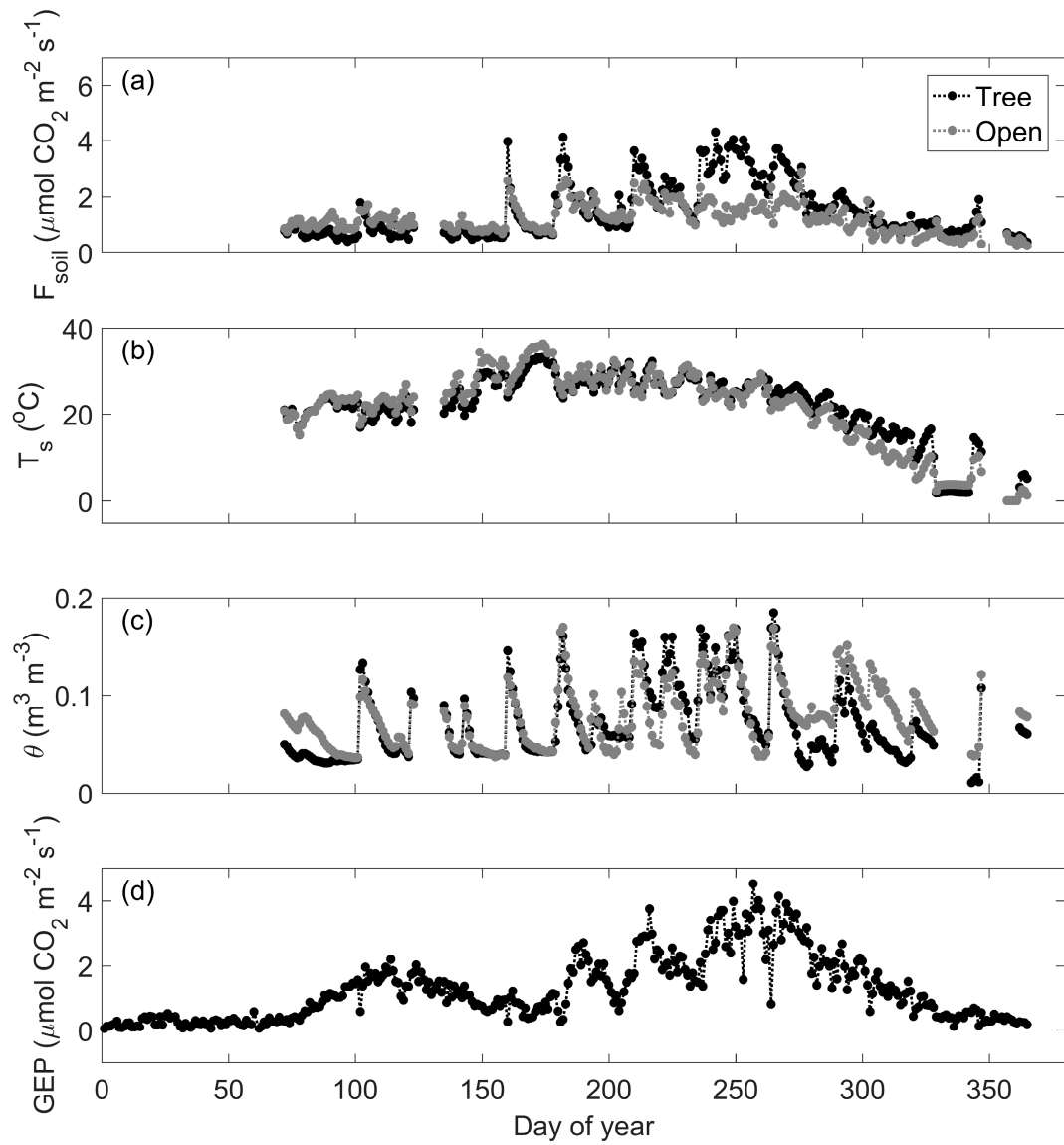


Figure S2. 2015 time series of observed daily mean soil CO₂ efflux (F_{soil}), soil temperature (T_s), and volumetric soil moisture (θ) for soil near mesquite trees (black) and in intercanopy space (gray) from the savanna. Also shown is gross ecosystem photosynthesis (GEP).

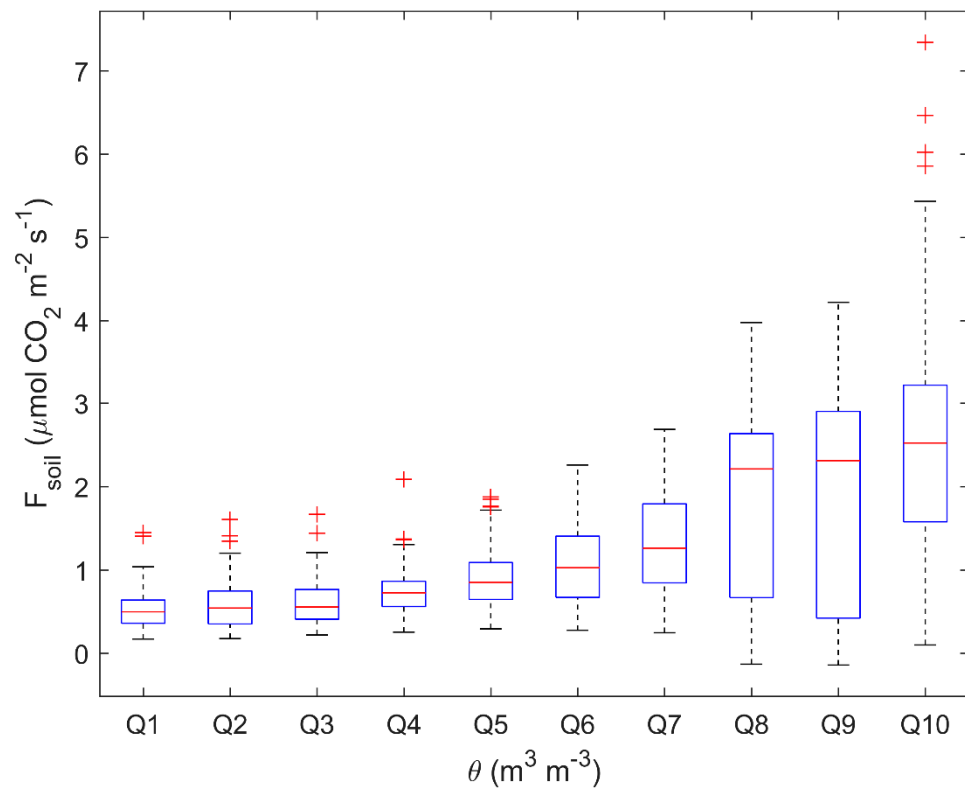


Figure S3. Boxplot of soil CO₂ efflux (F_{soil}) for 10 quantiles of volumetric soil moisture (θ) at the grassland site.

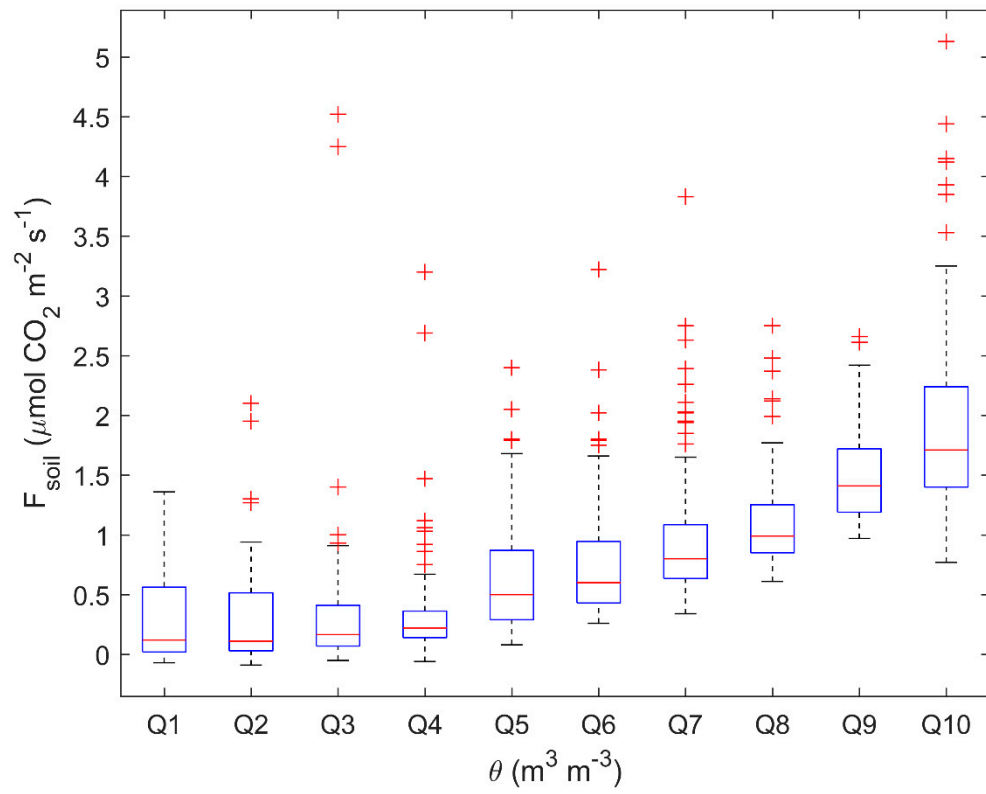


Figure S4. Boxplot of soil CO₂ efflux (F_{soil}) for 10 quantiles of volumetric soil moisture (θ) at the shrubland site.

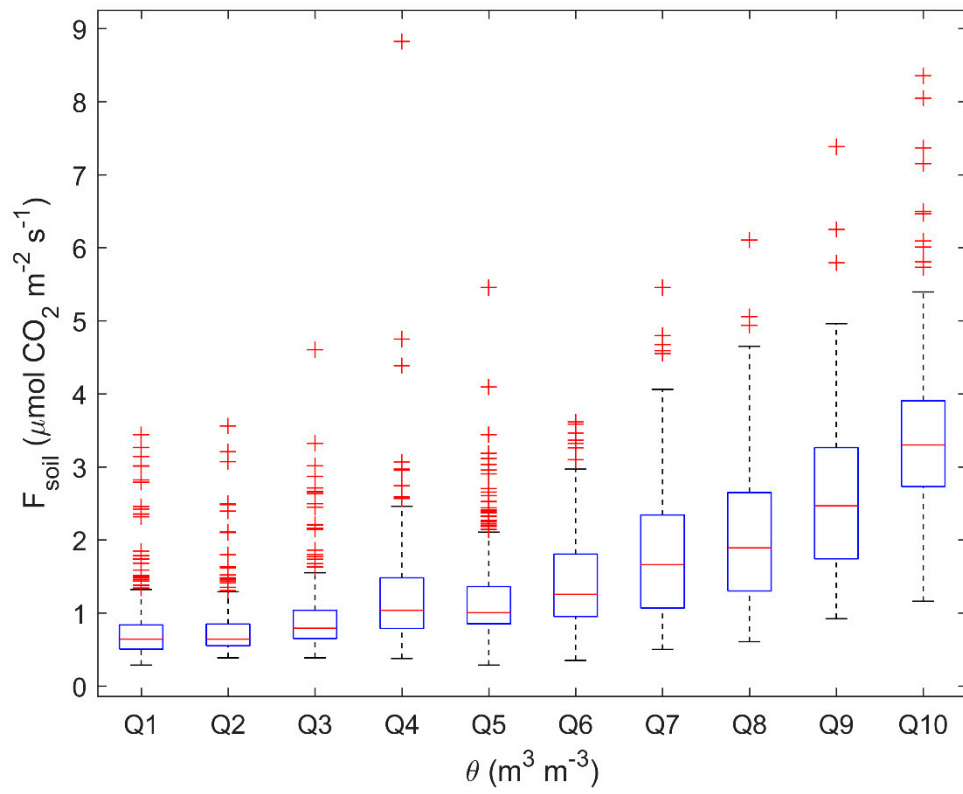


Figure S5. Boxplot of soil CO₂ efflux (F_{soil}) for 10 quantiles of volumetric soil moisture (θ) at the savanna site.

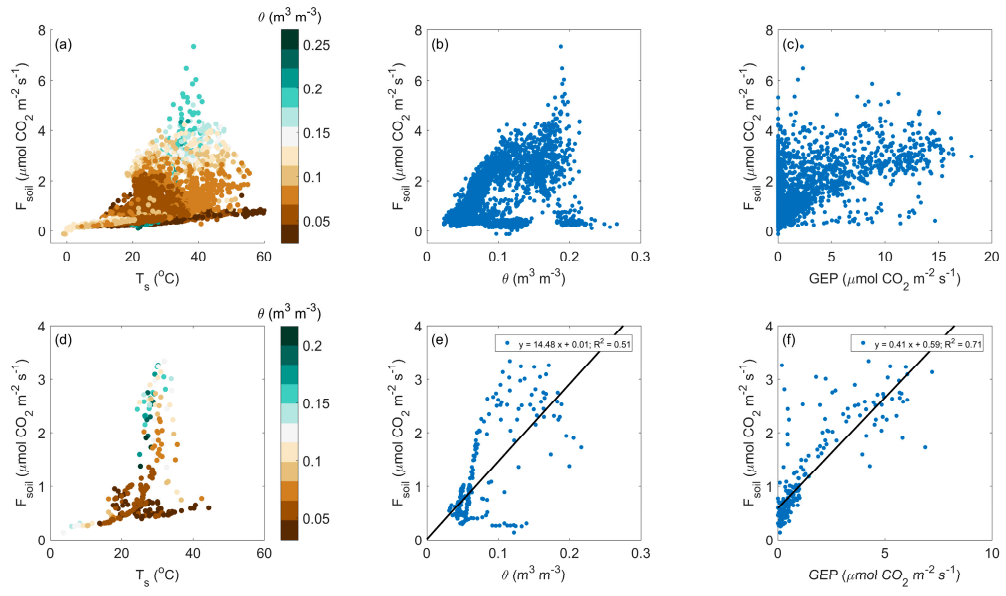


Figure S6. Controls on soil CO₂ efflux (F_{soil}) at the grassland site.

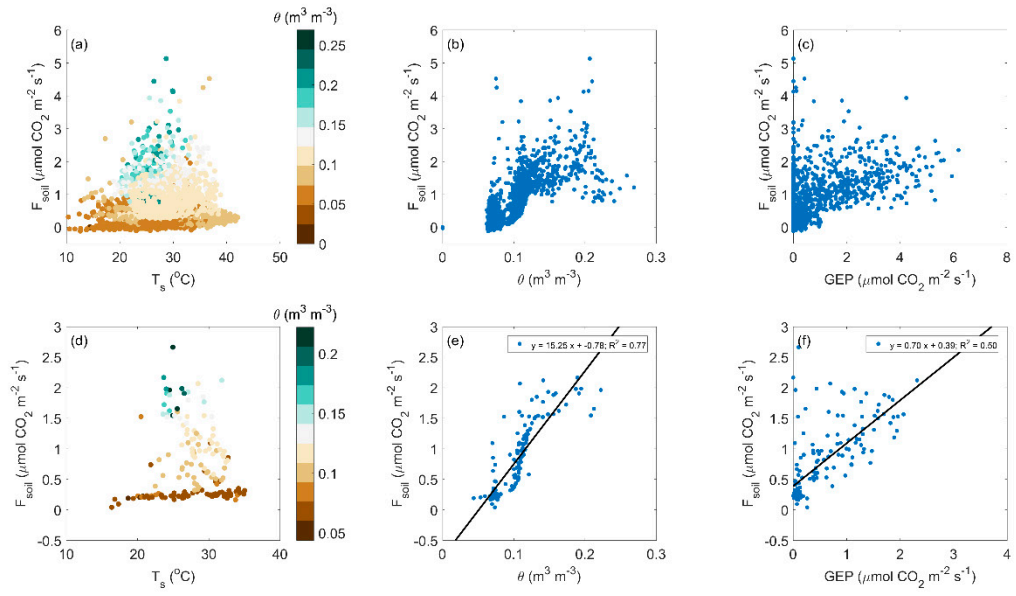


Figure S7. Controls on soil CO₂ efflux (F_{soil}) at the shrubland site.

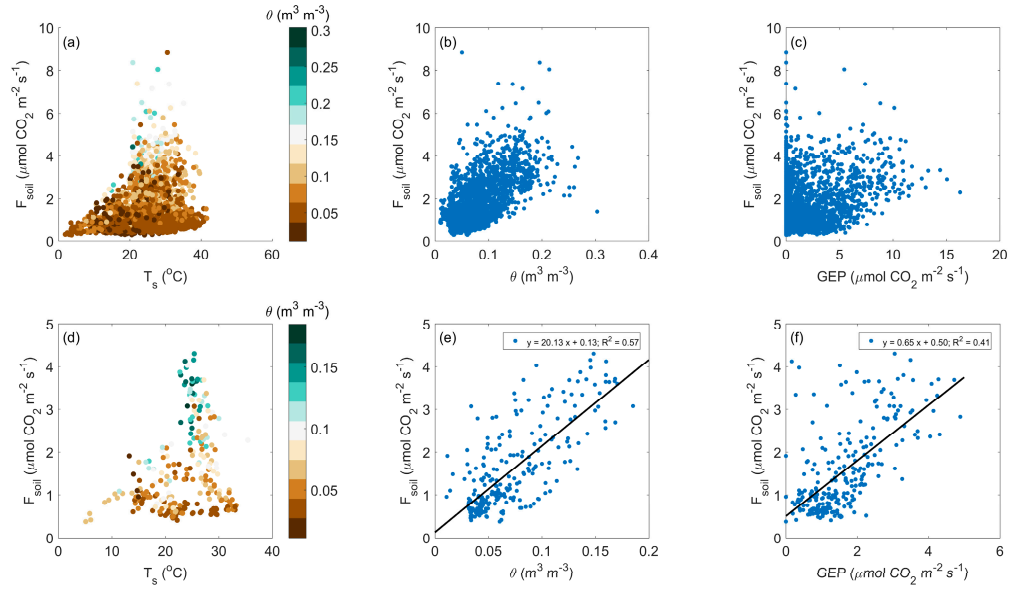


Figure S8. Controls on soil CO₂ efflux (F_{soil}) at the savanna site.

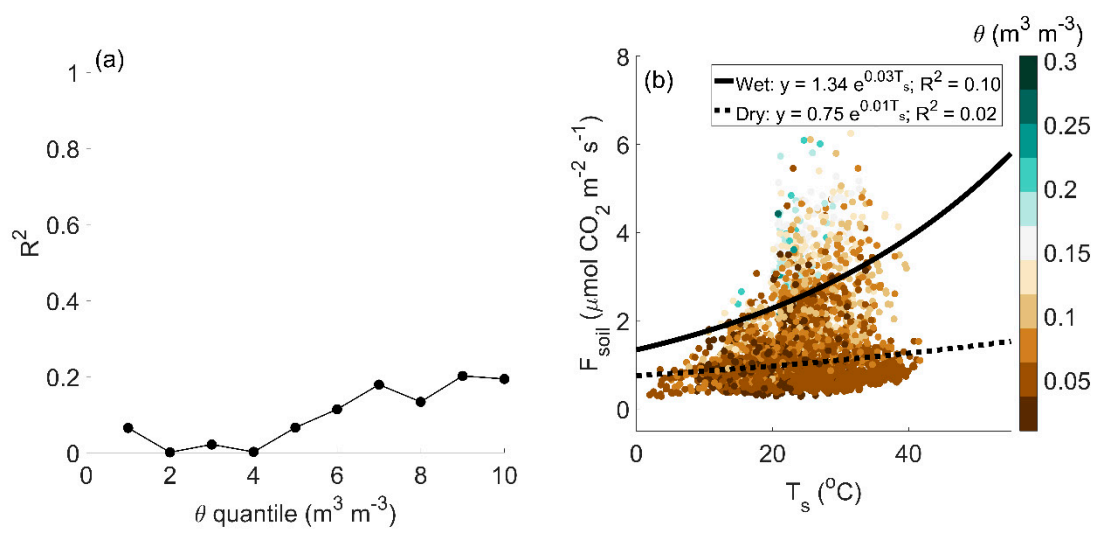


Figure S9. Same as Figure 3 but for the savanna site.

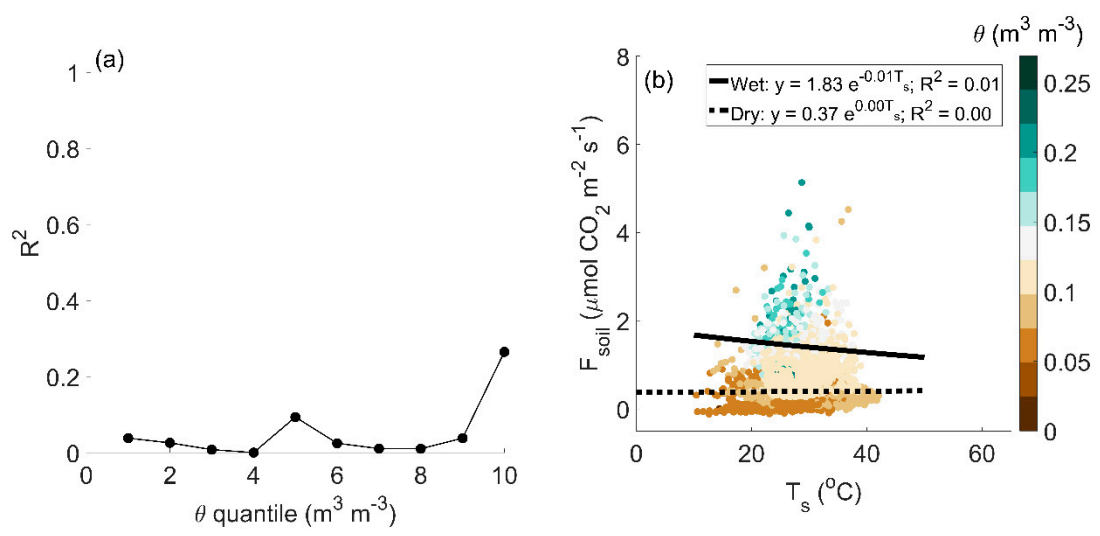


Figure S10. Same as Figure 3 but for the shrubland site.

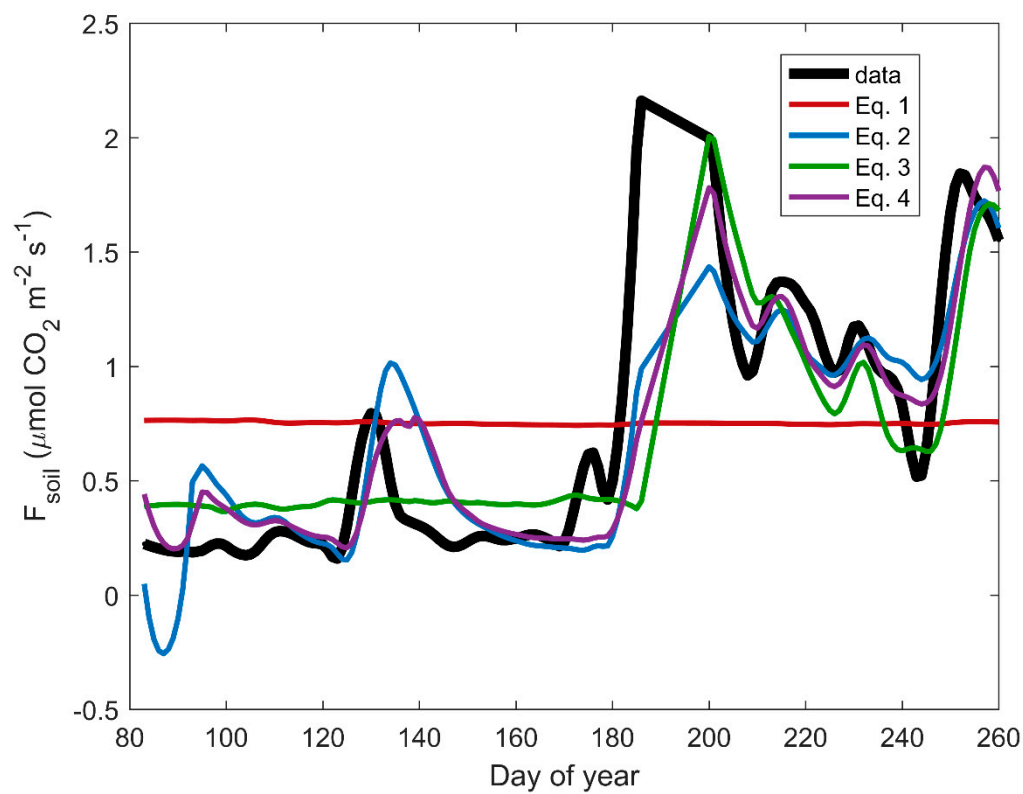


Figure S11. Same as Figure 6 but for the shrubland site.

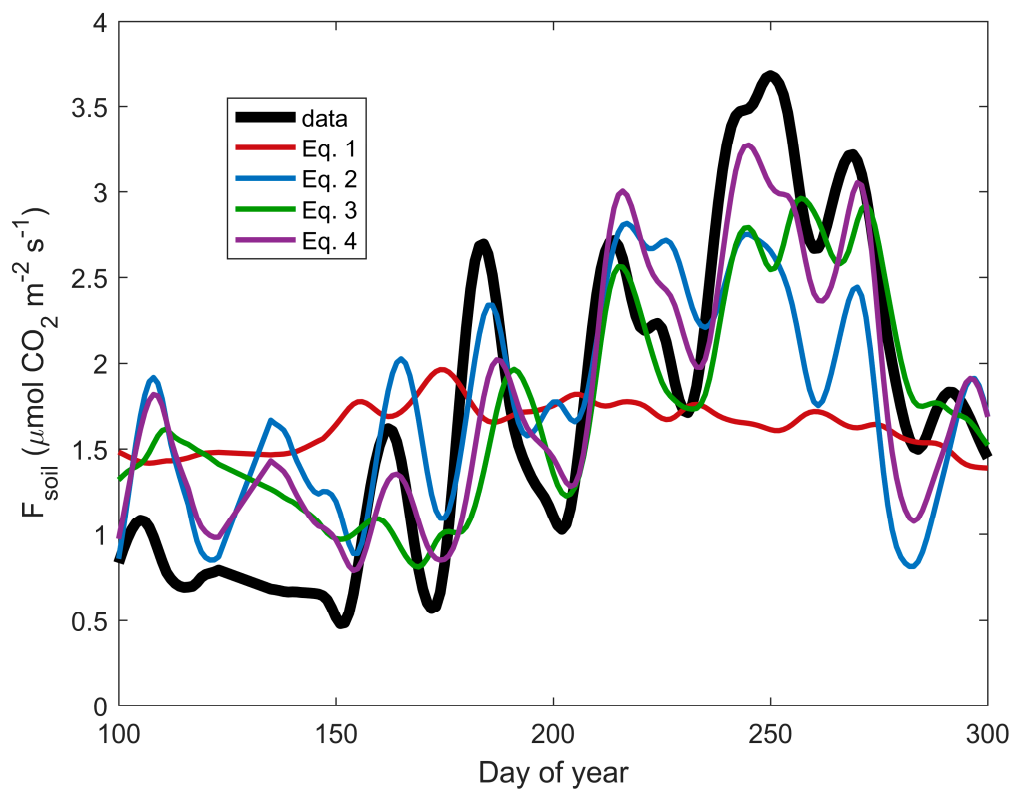


Figure S12. Same as Figure 6 but for the savanna site.