

## Supporting Information:

# Oxidative Stress Pathways Linked to Apoptosis Induction by Low-Temperature Plasma Jet Activated Media in Bladder Cancer Cells: An In Vitro and In Vivo Study

Hideo Fukuhara <sup>1,\*,+</sup>, Endre J. Szili <sup>2,†</sup>, Jun-Seok Oh <sup>3,†</sup>, Kawada Chiaki <sup>1</sup>, Shinkuro Yamamoto <sup>1</sup>,  
Atsushi Kurabayashi <sup>4</sup>, Mutsuo Furihata <sup>4</sup>, Masayuki Tsuda <sup>5</sup>, Hiroshi Furuta <sup>6</sup>, Howard D. Lindsay <sup>7</sup>,  
Robert D. Short <sup>8</sup>, Akimitsu Hatta <sup>6</sup> and Keiji Inoue <sup>1</sup>

<sup>1</sup> Department of Urology, Kochi Medical School, Nankoku, Kochi 783-8505, Japan; jm-kawadac@kochi-u.ac.jp (K.C.); jm-yamamoto-shinkuro@kochi-u.ac.jp (S.Y.); keiji@kochi-u.ac.jp (K.I.)

<sup>2</sup> Future Industries Institute, South Australia, Adelaide, SA 5095, Australia; endre.szili@unisa.edu.au

<sup>3</sup> Department of Physics and Electronics, Graduate School of Engineering, Osaka Metropolitan University, Osaka 558-8585, Japan; jsch@omu.ac.jp

<sup>4</sup> Department of Pathology, Kochi Medical School, Nankoku, Kochi 783-8505, Japan; kurabaya@kochi-u.ac.jp (A.K.); furiham@kochi-u.ac.jp (M.F.)

<sup>5</sup> Division of Laboratory Animal Science, Life Sciences and Functional Materials Section, Kochi Medical School, Nankoku, Kochi 783-8505, Japan; mstsuda@kochi-u.ac.jp

<sup>6</sup> Department of Electronic & Photonic Systems Engineering, Kochi University of Technology, Kami, Kochi 782-8502, Japan; furuta.hiroshi@kochi-tech.ac.jp (H.F.); hatta.akimitsu@kochi-tech.ac.jp (A.H.)

<sup>7</sup> Lancaster Medical School, Lancaster University, Lancaster LA1 4YW, UK; h.lindsay@lancaster.ac.uk

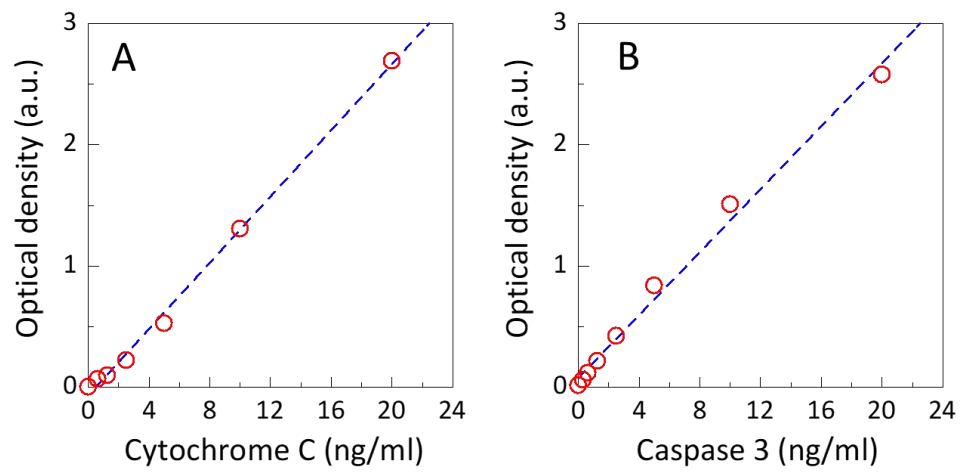
<sup>8</sup> Department of Chemistry and Material Science Institute, Lancaster University, Lancaster LA1 4YW, UK; r.d.short1@lancaster.ac.uk

\* Correspondence: fukuhara@kochi-u.ac.jp; Tel.: +81-088-880-2402, Fax: +81-088-880-2404

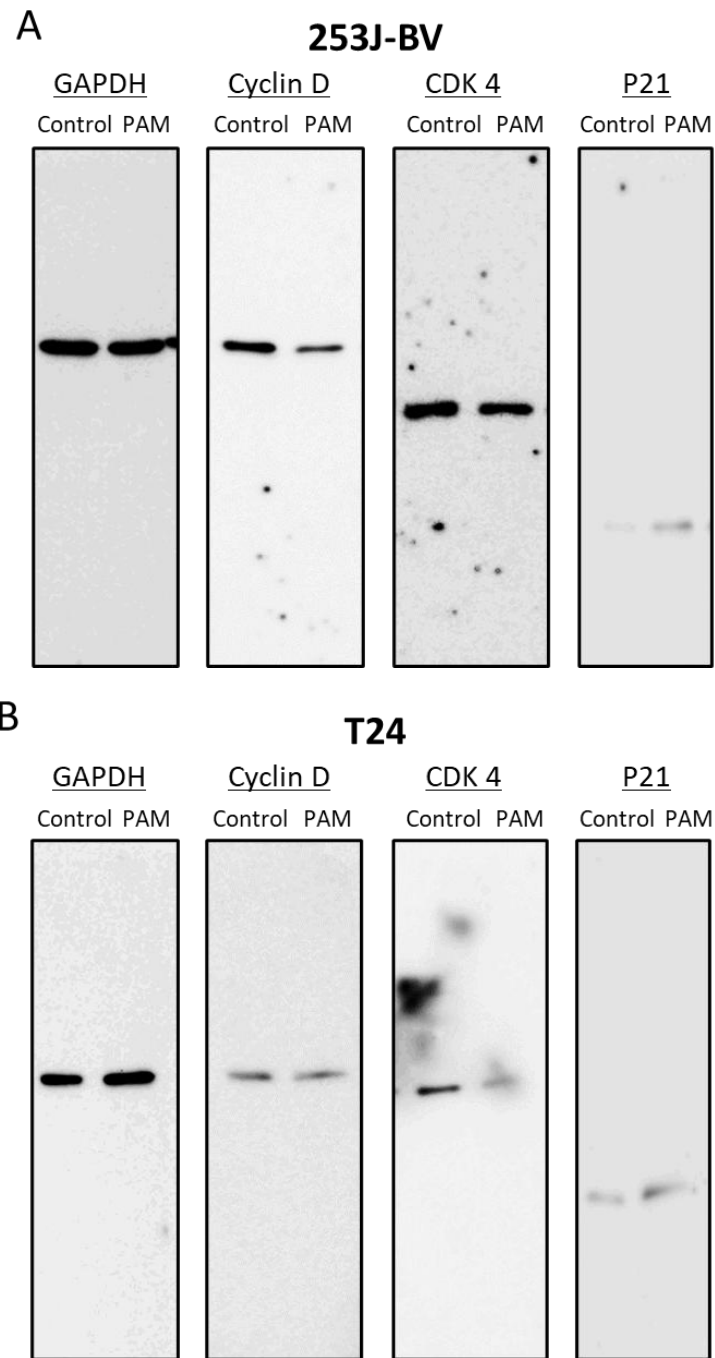
† These authors contributed equally to this work.

**Supporting information S1.** Calibration curves for the quantification of cytochrome c and caspase 3

**Supporting information S2.** Larger areas of western blots



**Figure S1:** Calibration curves of cytochrome c and caspase 3 used to determine their cellular concentrations in the manuscript based on a linear trend line.



**Figure S2:** Photographs showing the larger area of western blot data for 253J-BV and T24, respectively.