

## Supplementary Materials

Table S1. Results of Model 1 with uninformative priors

Parameters	Mean	SD	n_eff	Rhat
Constant	1.58	0.05	5470	1
PlantDiversity	0.17	0.07	6154	1
AnimalDiversity	0.08	0.17	5712	1

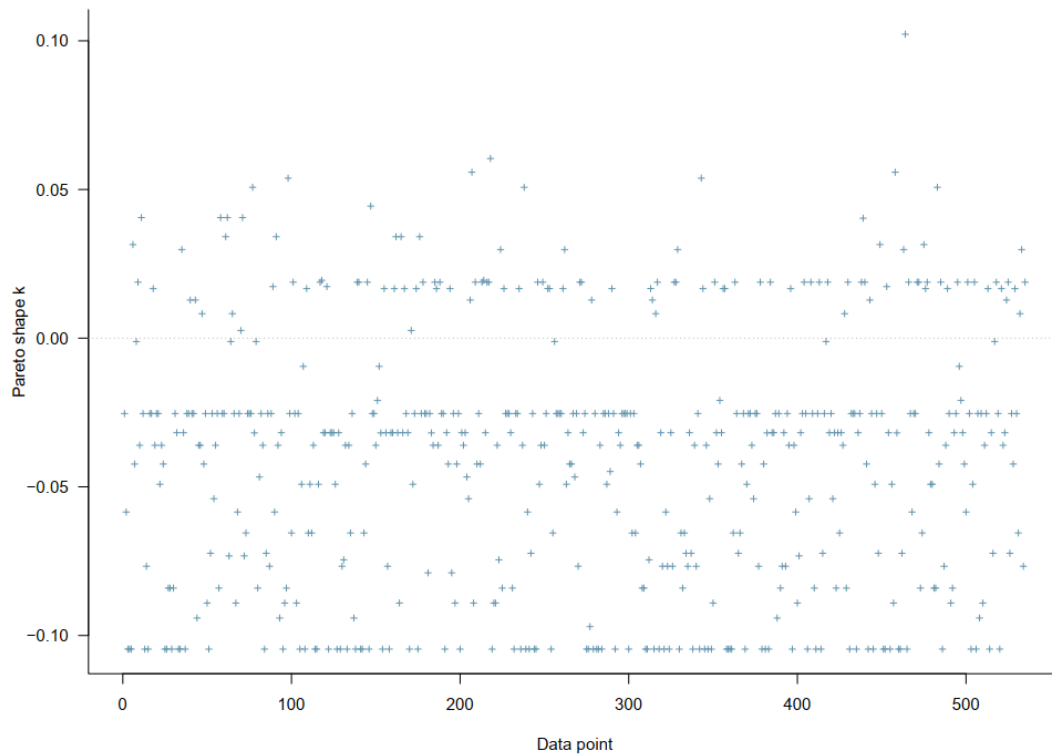


Figure S1. Model 1's PSIS-LOO diagnosis plots with uninformative priors

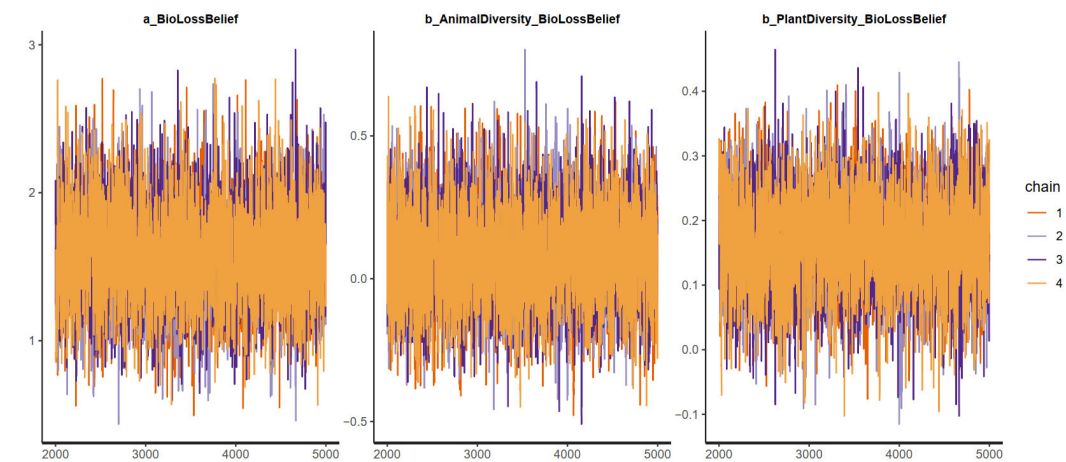


Figure S2. Model 1's trace plots with uninformative priors

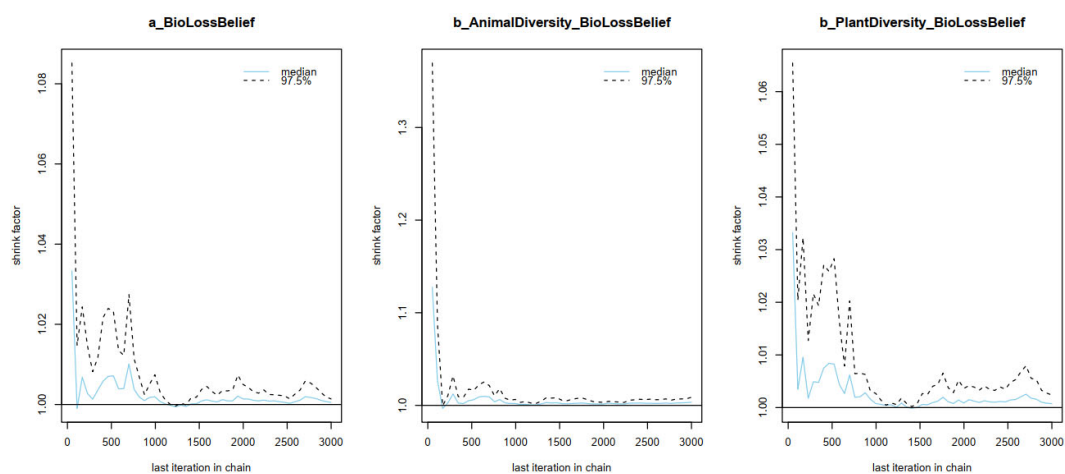


Figure S3. Model 1's Gelman–Rubin–Brooks plots with uninformative priors

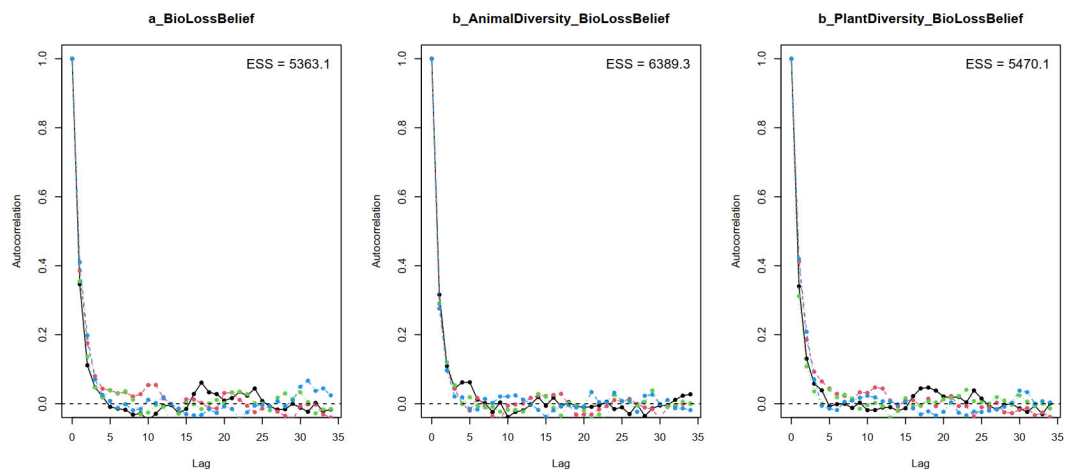


Figure S4. Model 1's autocorrelation plots with uninformative priors

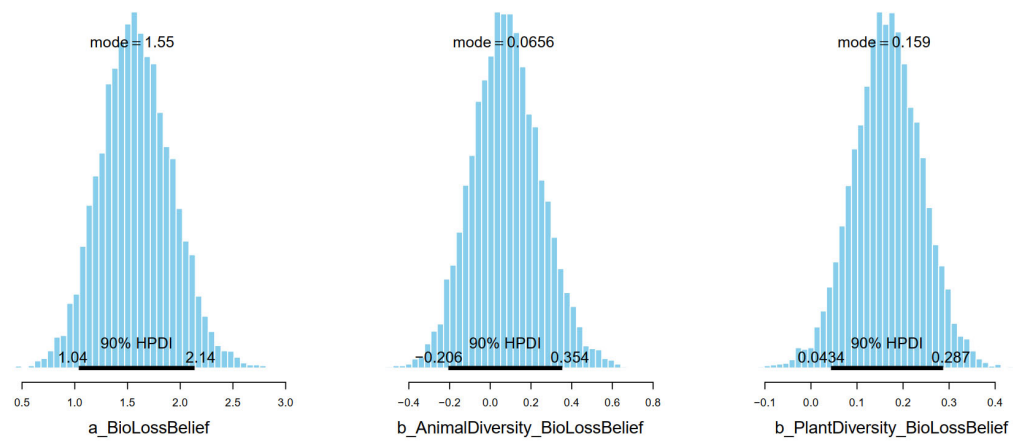


Figure S5. Model 1's posterior distributions with uninformative priors