

Effect of Feed Supplementation with *Bacillus coagulans* on Nrf Gene Family Expression in Common Carp (*Cyprinus carpio*) under Long-Term Exposure to Cd²⁺

Zhou Jiang, Xuejun Li * and Chuanju Dong *

Research Center on Legal Issues Concerning Agriculture, Countryside and Farmers/College of Fishery, Henan Normal University, Xinxiang 453007, China; jz491154021@foxmail.com (Z.J.)

* Correspondence: xjli@htu.cn (X.L.); cjd1989@126.com (C.D.)

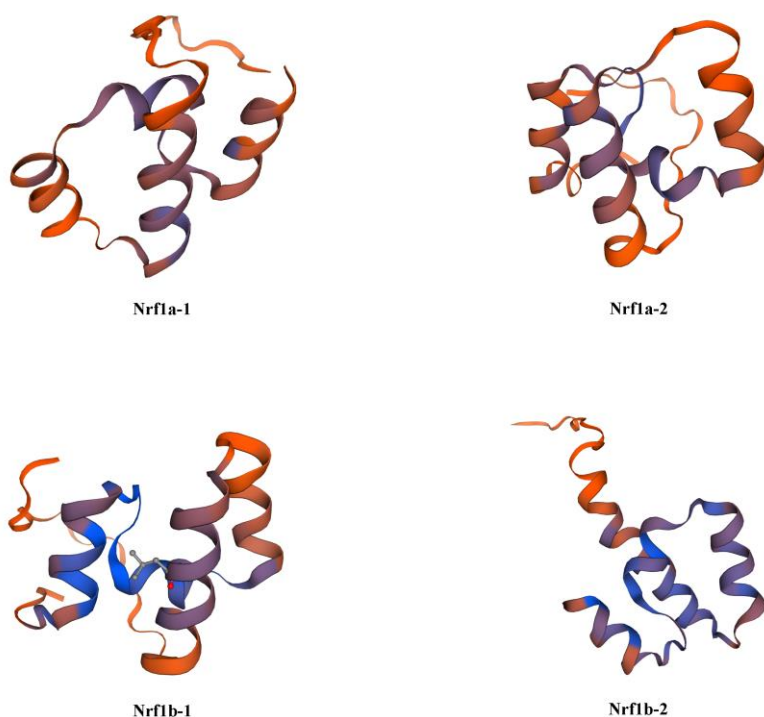


Figure S1a. 3D structure domains of Nrf1.

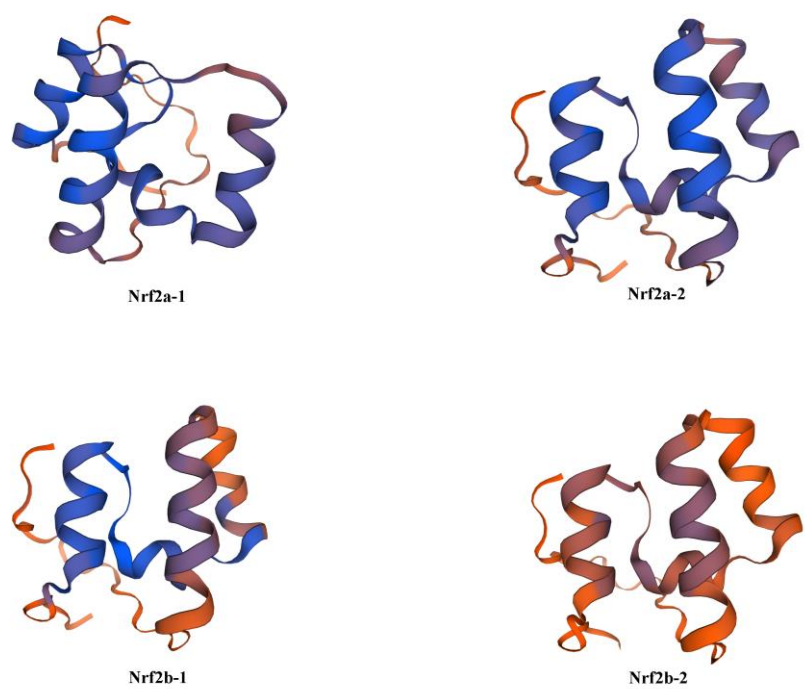


Figure S 1b. 3D structure domains of Nrf2.

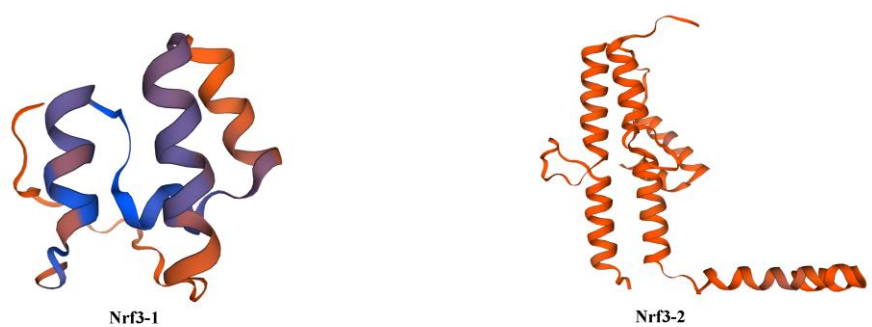


Figure S1c. 3D structure domains of Nrf3.



Figure S1d. 3D structure domains of Nfe2.

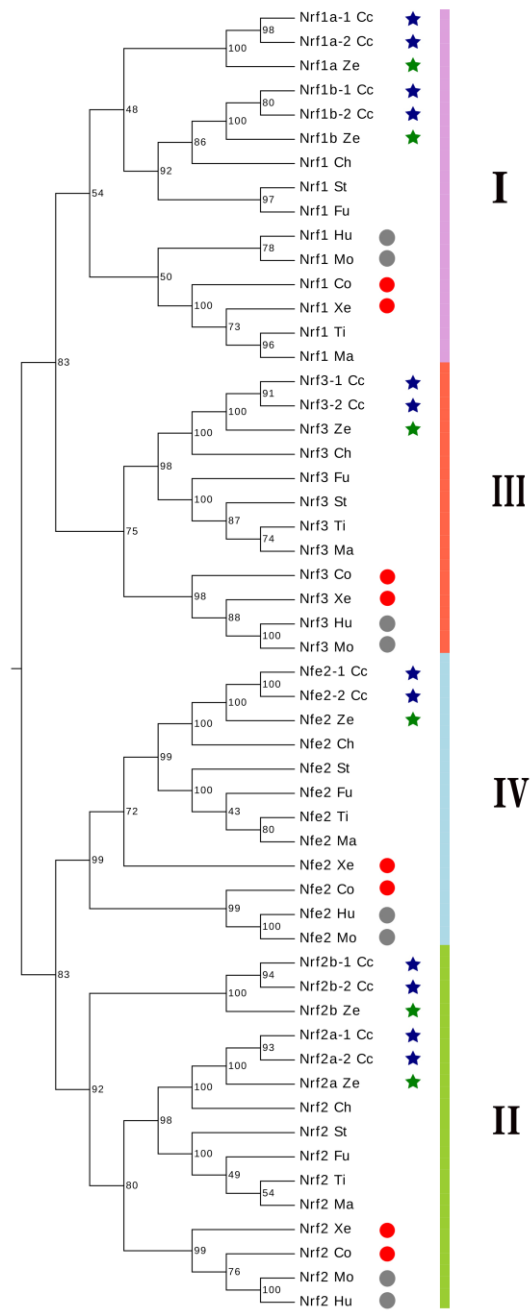


Figure S2: Maximum likelihood phylogenetic tree of 54 *Nrf* protein sequences.