

Figure S2. Existing pathways and implementation of co-designed interventions for models of care based on telecommunications.

(ii) Existing pathways and implementation of co-designed interventions for models of care based on telecommunications

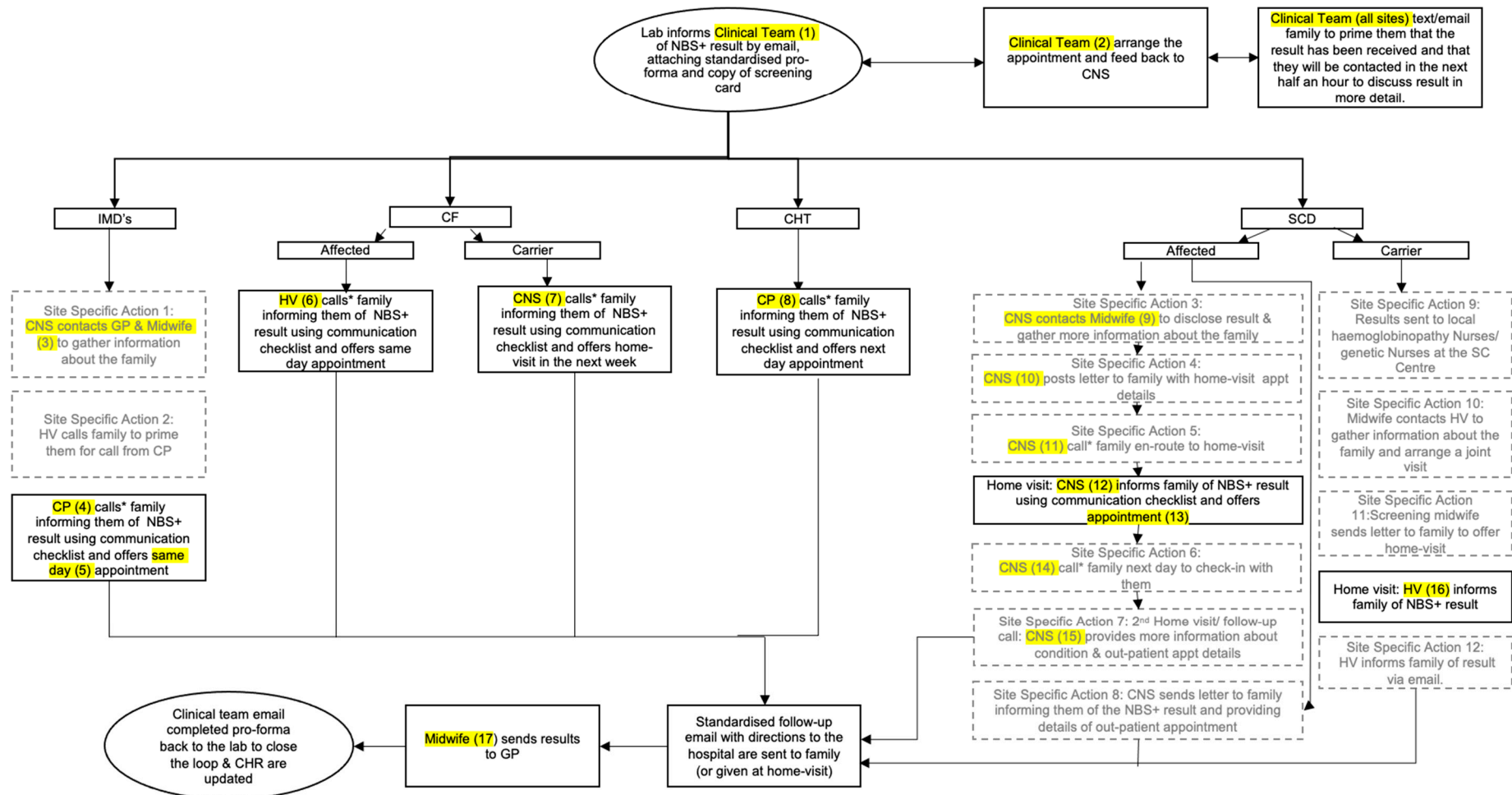


Figure S2 legend:

***Call refers to telephone call or video conference call where possible.**

Boxes with a grey dashed outline represent site specific actions, outlined below:
Action 1: Specific to Sites 2, 10, 11, 13.
Action 2: Specific to Site 2 only.
Action 3: Specific to Sites 1, 9, 10, 11.
Action 4: Specific to Sites 6a and 9.
Action 5: Specific to Sites 1, 10, 11, 13.
Action 6: Specific to Sites 6a, 9, 10, 13.
Action 7: Specific to Sites 6a, 7, 10.
Action 8: Specific to Site 2 only.
Action 9: Specific to Site 1 only.
Action 10: Specific to Site 10 only.
Action 11: Specific to Site 12 only.
Action 12: Specific to Site 3 only.

Terms highlighted in yellow indicate that the designated clinical team member/timing varies depending on site. These are specified for each site below:

- (1) CF Team (Site 12 CF Affected only); CNS & CP (Sites 6a, 5, 6, 13); CP (Sites 11, 12, 13 CHT only, Site 4 CHT only, Site 2, 3, 10 IMDs only); Midwife & IMD Team (Site 7 IMDs only); Nurse Practitioner (Site 5 IMDs only); Screening Coordinator (Site 11 CHT only); Screening Midwife (Site 12 SCD & CF Carrier only).
- (2) Screening Coordinator (Site 11 CHT only); Clinical Team (all other sites).
- (3) CNS contacts GP & Midwife (Site 13); CP contacts GP (Site 10); CP contacts Midwife and HV (Site 2).
- (4) CP/CNS depending on complexity (Site 6); CNS (Sites 5 and 13); CP (Sites 2 and 10); Midwife (Site 7); Screening Nurse (Site 11).
- (5) Same day appointment (IVA/MCADD/MSUD); Next day appointment (PKU/GA1/HCU).
- (6) CNS (Site 5, Portsmouth); CP (Site 6a local babies); HV (Site 6a remote babies).
- (7) CNS (Site 5); CP/HV (KCH); Screening Midwife (Site 12).
- (8) CP or Endocrine Nurse Specialist (Site 2); CP (Sites 3 and 13); CP or Screening Midwife (Site 12); GP or CNS (Site 5); Screening Coordinator/Midwife (Site 11)
- (9) CNS contacts Midwife/HV (Site 1); CNS contacts CP (Site 11); CNS contacts Screening Midwife (Site 7); Homecare Practitioner contacts HV (Site 9); Midwife contacts HV (Site 10).
- (10) CNS (Site 6a); Homecare Practitioner (Site 9).
- (11) CP or Endocrine Nurse Specialist (Site 2); CP (Sites 3 and 13); CP or Screening Midwife (Site 12); GP or CNS (Site 5); Screening Coordinator/Midwife (Site 11)
- (12) CNS (Sites 1, 6a, 7, 11, 13); Homecare Practitioner (Site 9); HV/Midwife (Site 10).
- (13) Hospital Appointment (Sites 1 and 10); Next day follow-up home-visit (Site 7); 2-week follow-up home-visit (Site 6a).
- (14) CNS (Sites 6a and 13); Homecare Practitioner (Site 9); Midwife (Site 10).
- (15) CNS (Site 6a and 7); Midwife (Site 10).
- (16) HV (Site 2); Midwife/HV (Sites 8 and 10); Screening Link HV (Site 9); Screening Link HV & Family HV (Site 7); Screening Midwife (Site 12);

(17) Biochemist (Site 3); CP/CNS (Sites 1, 5, 7, 8, 10 CF only, Sites 12 and 13) Consultant (Site 10 IMDs only); Homecare Practitioner (Site 9 SCD only):
Lab (Sites 2, 4, 7, 10 CHT only); Midwife (Site 10 SCD only); Screening Nurse (Site 11).

Abbreviations:

Clinical Nurse (CNS)

Clinical Psychologist (CP)

General Practitioner (GP)

Health Visitor (HV)