

Supplementary Material

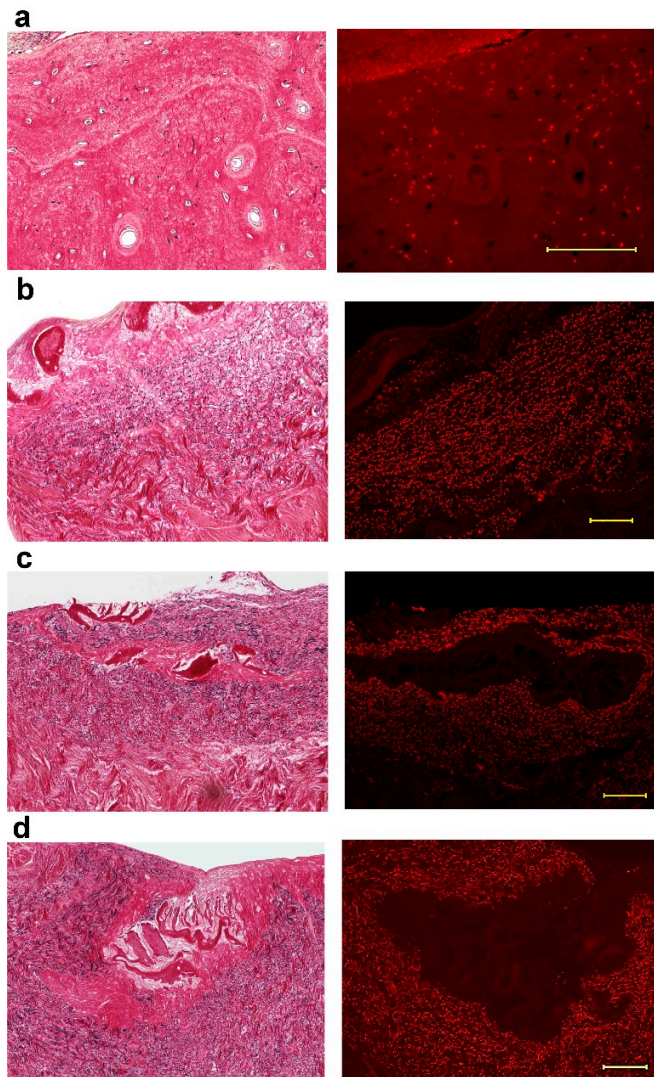


Figure S1. Comparison of (left) Elastic van Gieson (EVG) staining, and (right) immunostaining of FBXW2 (red). (a) Bone. (b)-(d) Periosteum during explant culture. (b) 3 weeks (c) 4 weeks (d) 5 weeks. Scale bar: 100 μ m.

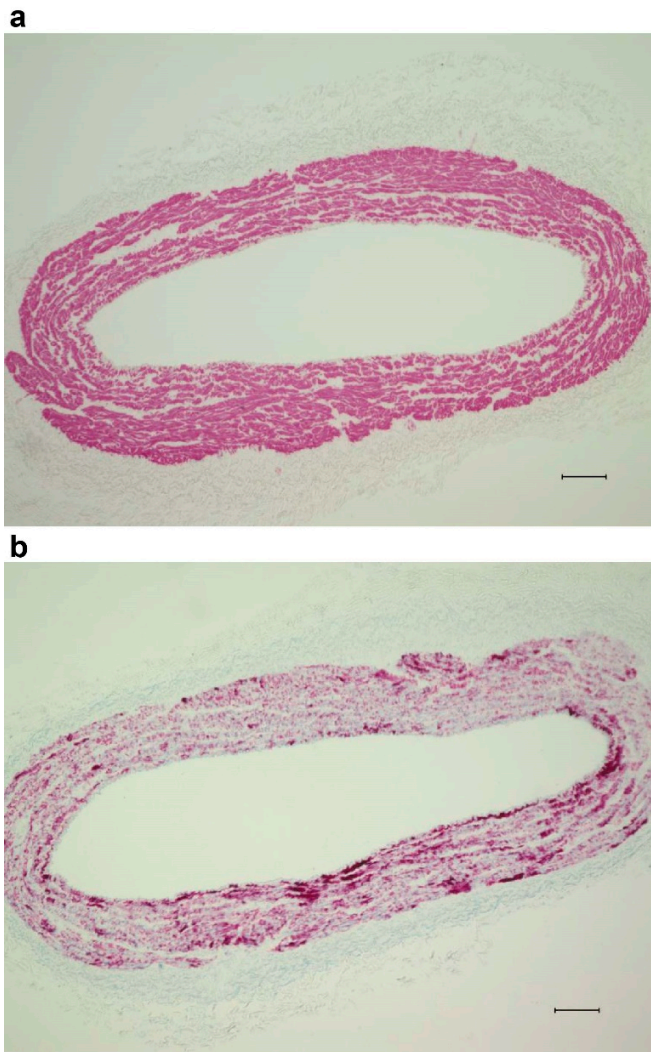


Figure S2. Comparison of single immunostaining and double immunostaining. Observation of large blood vessels. (a) Immunostaining of blood vessels with alkaline phosphatase (AP) tag. α SMA: red. (b) Immunostaining of blood vessels with AP tag. Osteocalcin: blue, α SMA: red. Scale bar: 100 μ m..

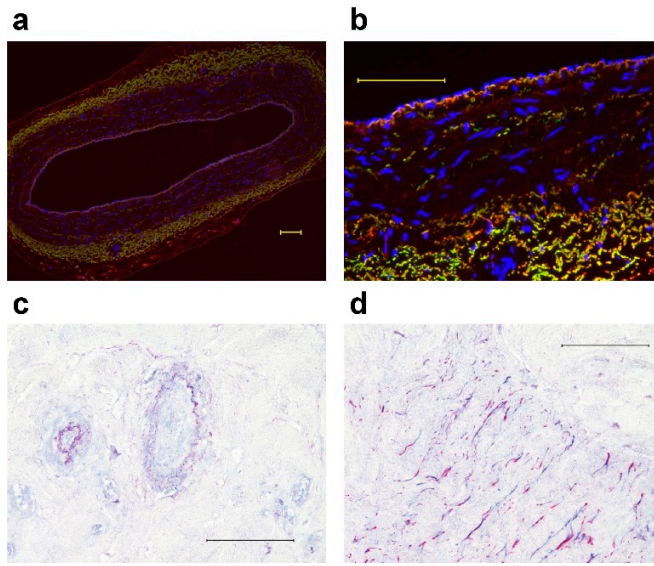


Figure S3. Double immunostaining of elastin and FBXW2. (a), (b) Large blood vessels. Elastin: green. FBXW2: red. (a) low magnification (b) high magnification of (a). (c), (d) Periosteum during explant culture (3 weeks). Elastin: blue. FBXW2: red. Scale bar: 100 μm .