

## **Supplementary Information**

# **Sulfidation of ZIF-Derived Core-Shell NiCo LDH/Ni MOF Heterostructure toward Supercapacitor Electrodes with Enhanced Performance**

Xin Zheng <sup>13\*#</sup>, Yihui Sun<sup>2#</sup>, Sijia Jin <sup>1</sup>, Minxuan Xu<sup>1</sup>, Yanyan Ding<sup>1</sup>, Fei Chen<sup>1</sup>, Tao Yang<sup>1</sup>, Qi Zhang<sup>1</sup>, Xinyue Zheng<sup>3</sup>, Hao Chen<sup>3\*</sup>

<sup>1</sup> *Center for Advanced Optoelectronic Materials, College of Materials and Environmental Engineering, Hangzhou Dianzi University, Hangzhou 310018, China*

<sup>2</sup> *Zhejiang Hikstor Technology Co. Ltd, Hangzhou 311300, China*

<sup>3</sup> *College of Chemistry and Materials Engineering, Zhejiang A&F University, Hangzhou 311300, China*

*\* Corresponding author.*

*Email addresses: vencen@hdu.edu.cn; haochen@zafu.edu.cn*

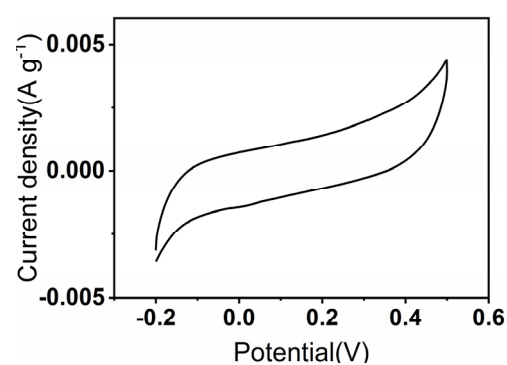


Figure S1. CV curve of carbon cloth at 2 mV/s

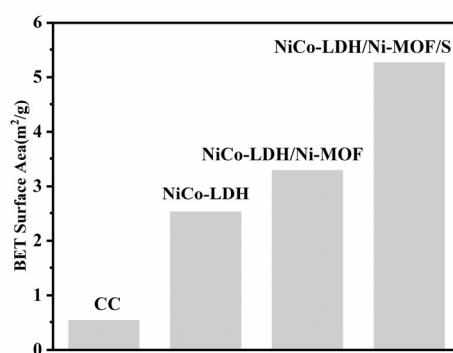


Figure S2. BET surface area comparison

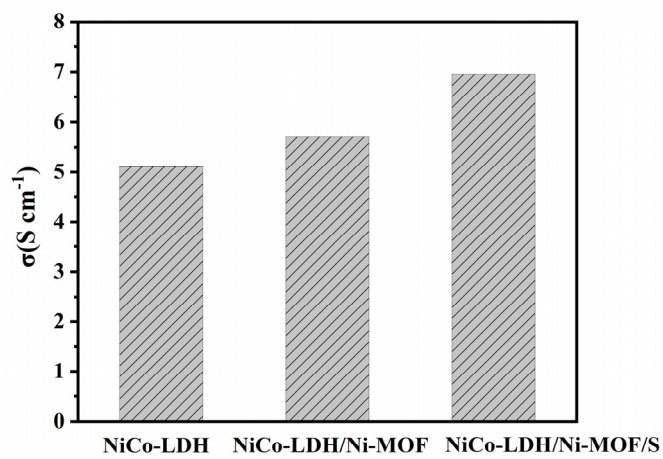


Figure S3. Conductivity of of Ni-Co LDH, NiCo LDH/Ni MOF, and NiCo LDH/S-Ni MOF sample

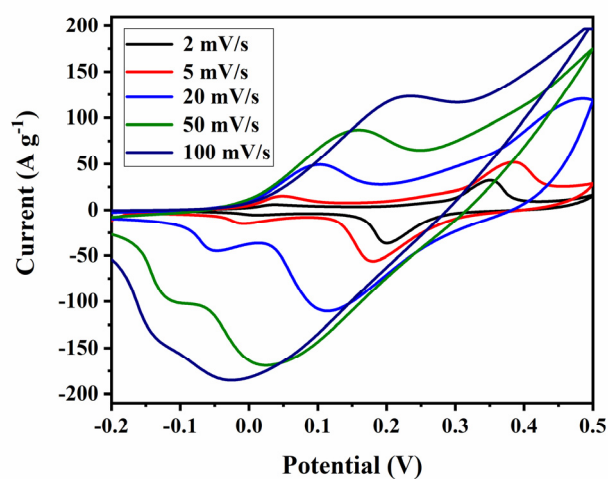


Figure S4. CV curves of the NiCo LDH/S-Ni MOF electrode at different scan rate of ranging from -0.2-0.5 V.

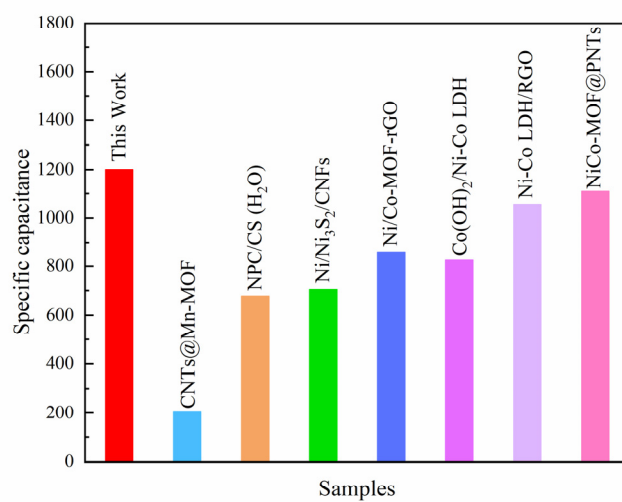


Figure S5. Electrochemical properties comparison of the NiCo LDH/S-Ni MOF electrode material with some relevant materials reported previously

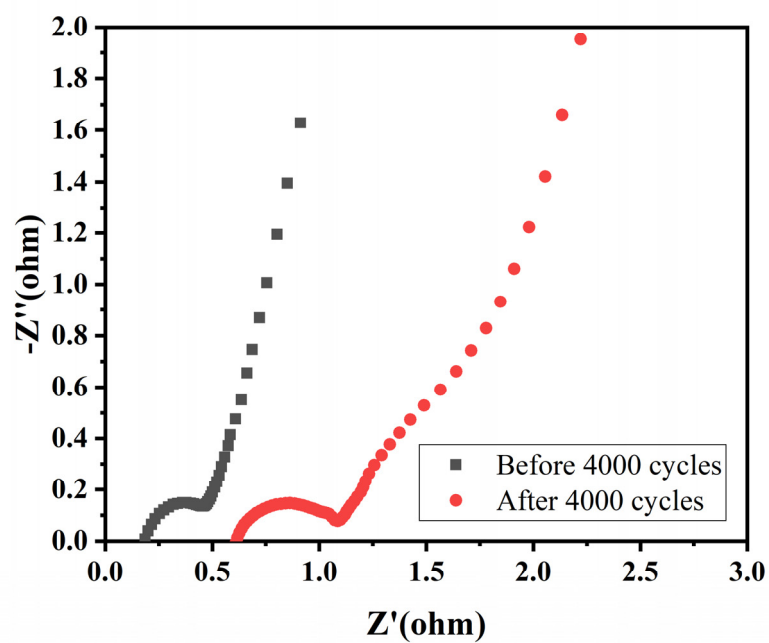


Figure S6. EIS comparison of NiCo LDH/S-Ni MOF sample before and after 4000 cycles

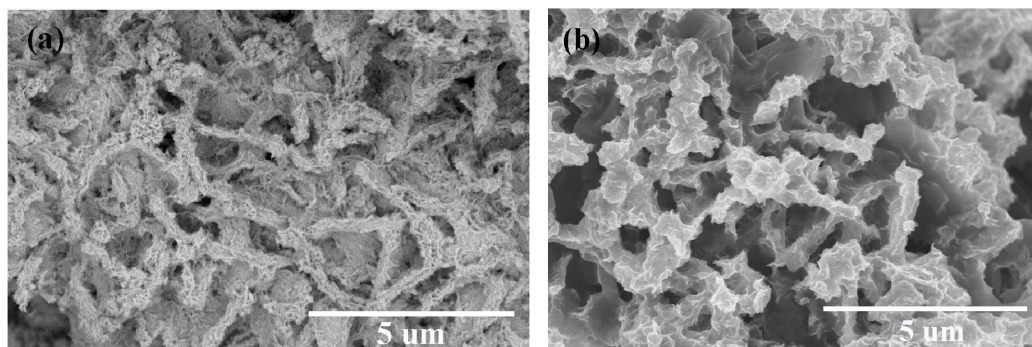


Figure S7. (a, b) SEM images of NiCo LDH/S-Ni MOF sample before and after 4000 cycles

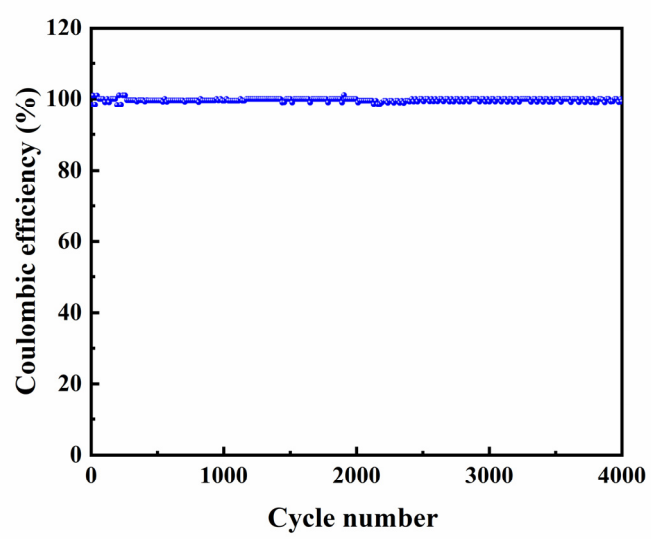


Figure S8. Coulombic efficiency at current density of  $5 \text{ Ag}^{-1}$