

Figure S1. Detection results of InDel markers by PAGE gel electrophoresis.

a is the detection result of InDel79868743 marker in green-peel plants of F_2 population; b is the detection result of InDel79868743 marker in white-peel plants of F_2 population. P1 represented 19141, P2 represented 19143, and F1 was 20183 F_1 . 9, 13, 44, 48, 52, 172, 218, 219, 102, 216 and 252 were the code of part recombinant plants between marker InDel79868743 and marker InDel80876526.

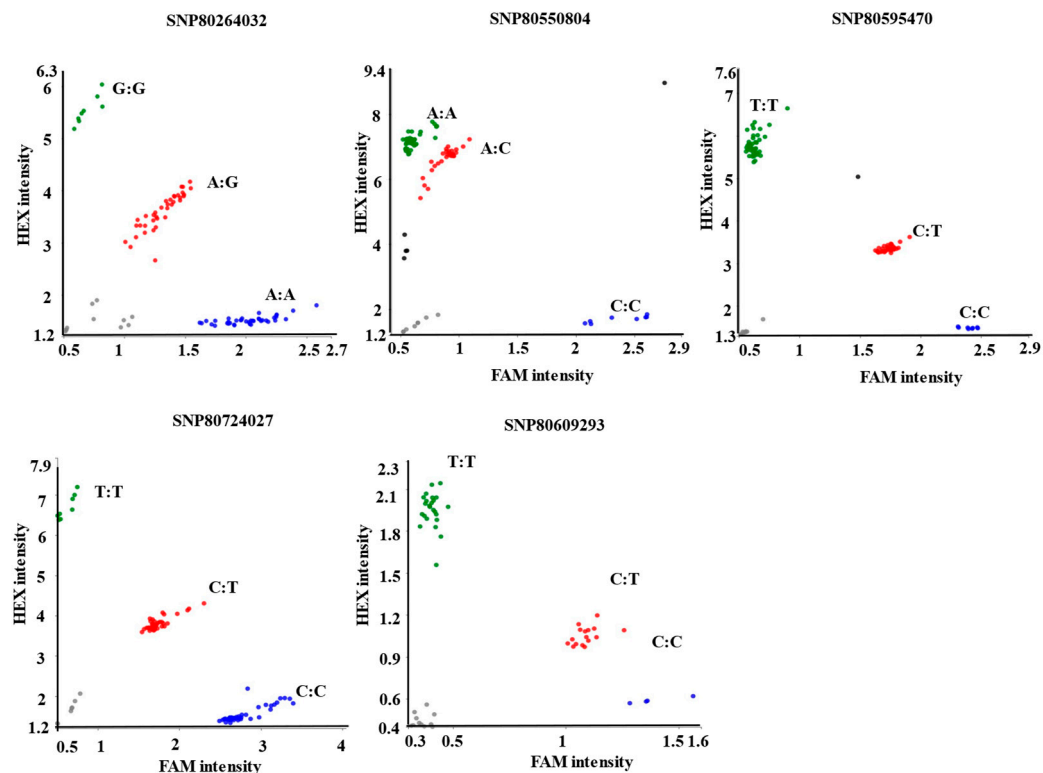


Figure S2. SNP genotyping by PARMS technology.

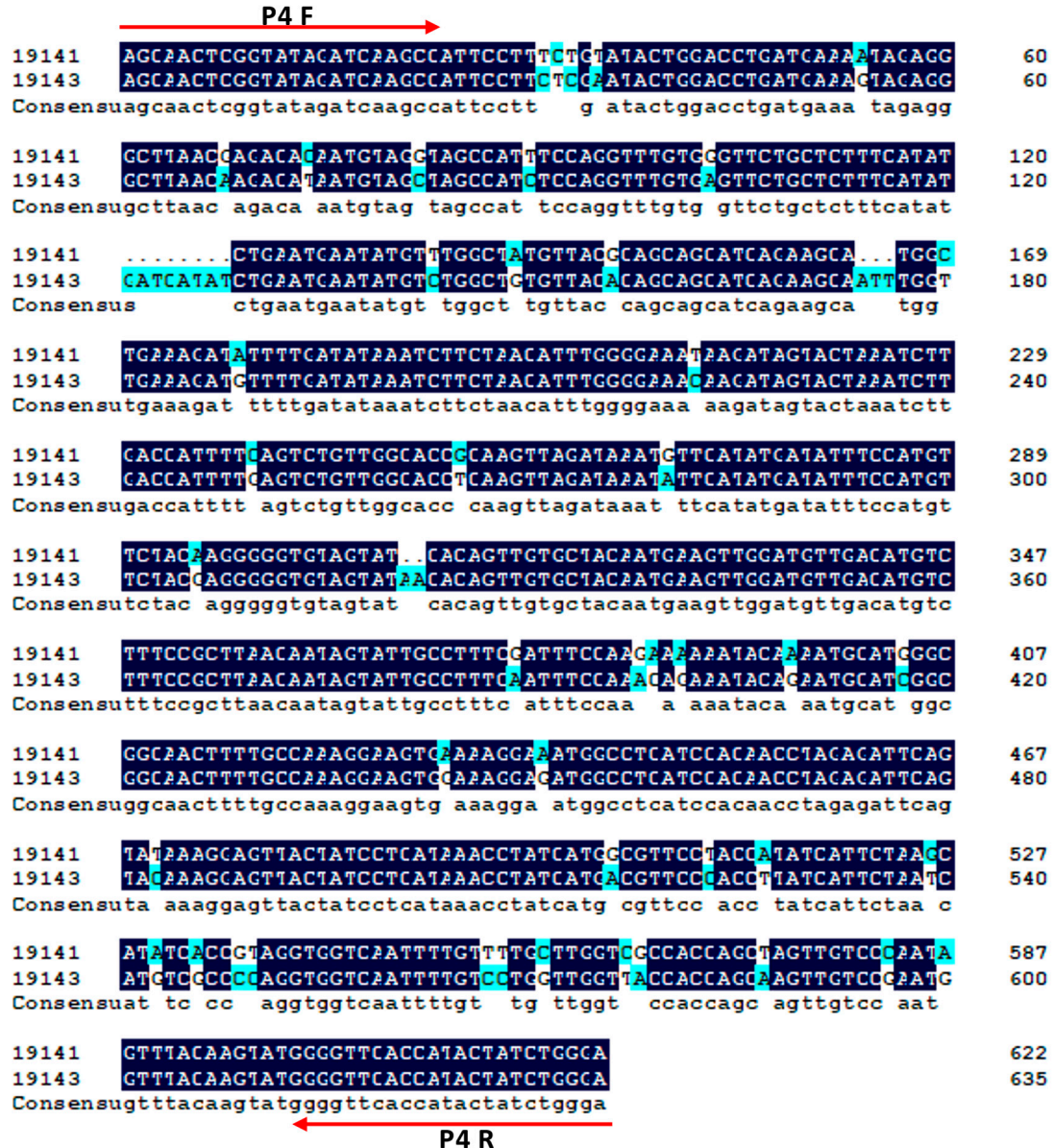


Figure S3. Sequence difference between 19141 and 19143 amplified with P4 primer combination.

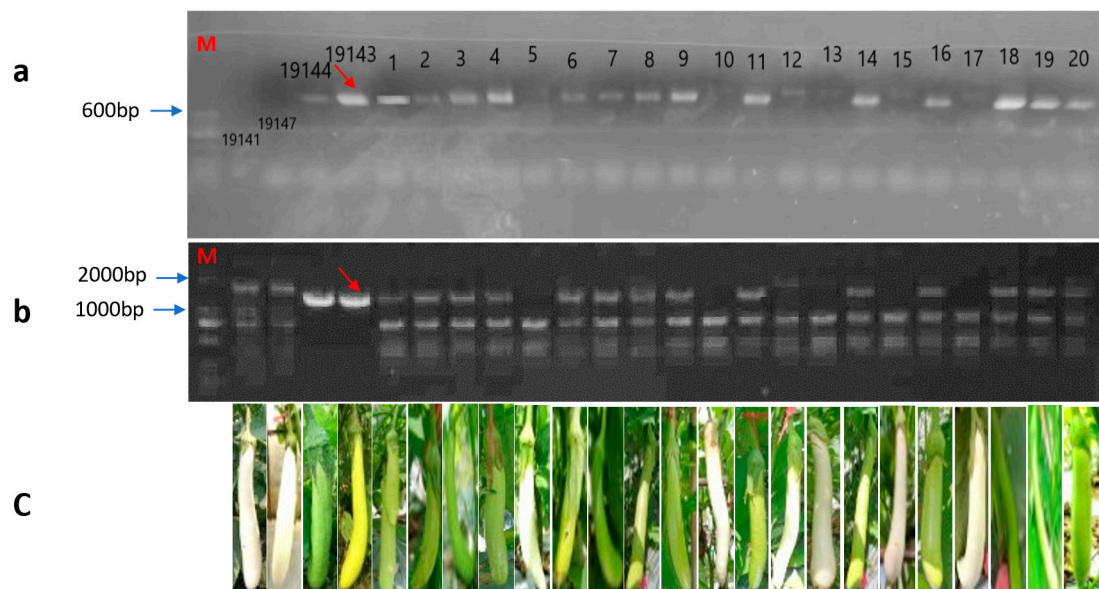


Figure S4. Amplification results of primer combination P3 and P5 for *SmAPRR2-Like* gene in 20183 F₂ population.

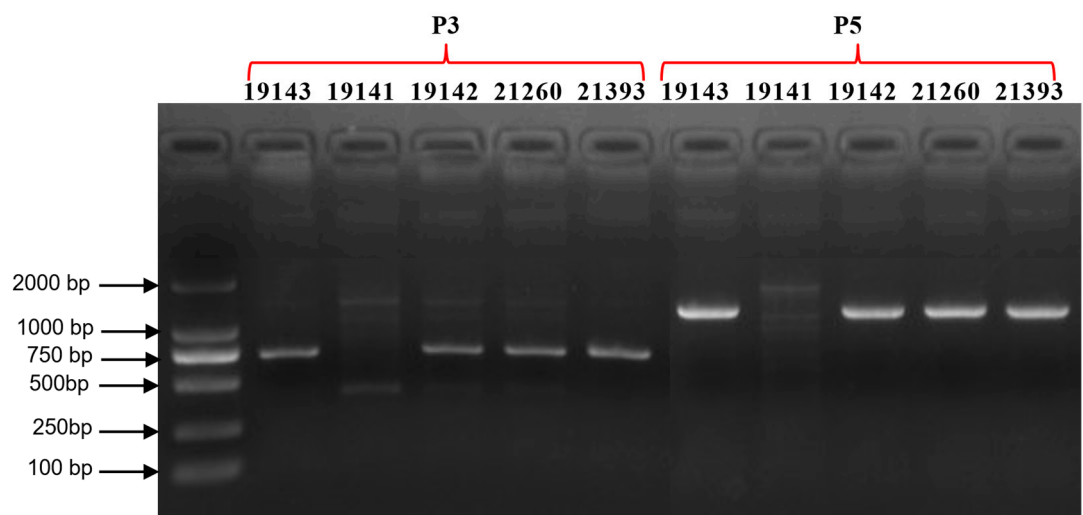


Figure S5. Amplification results of primer combination P3 and P5 for *SmAPRR2-Like* gene in three special white fruit accessions (19142, 21260 and 21393).