

Figure S1. Identification of DEGs in breeding line IBL2353 and *S. lycopersicum* cv. Ohio88119 following infection with *Cm*. (A) Number of DEGs at different time points in two lines. (B) Venn diagram representation of overlapping DEGs at two time points in IBL2353 and Ohio88119 respectively, and the left row showed whole overlapping DEGs including up-regulated and down-regulated DEGs in two lines separately. IBL is the abbreviation of IBL2353, and OH is the abbreviation of Ohio88119. UP means the up-regulated genes, DOWN means the down-regulated genes, and TOTAL means the number sum of up-regulated and down-regulated DEGs.

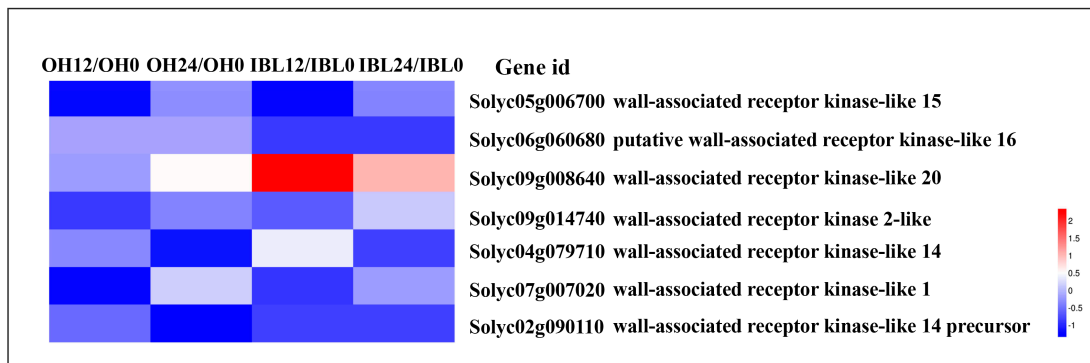


Figure S2. Expression profiles of WAKs subfamily genes in IBL2353 and Ohio88119 after the *Cm* infection. Compared with 0 hpi, the change pattern of gene expression at 12 hpi and 24 hpi were shown in two lines. The result was based on the Log2 value of gene expression fold change and were not normalized. The red color represented that the ratio of expression values at 12 hpi or 24 hpi to expression value at 0 hpi was higher than zero and up-regulated. The blue color represented that the ratio of expression values at 12 hpi or 24 hpi to expression value at 0 hpi was lower than zero and down-regulated.