

Table S1. Phenotypic evaluation of the resistance to *P. xanthii* race 2 under natural conditions of infection. Values are mean (n=12) \pm SE

accession	Disease score	Reaction classification
TUN-2	2.83 \pm 1.6	S
TUN-3	1.67 \pm 1.2	S
TUN-4	1.33 \pm 0.5	S
TUN-5	2.50 \pm 0.6	S
TUN-7	2.80 \pm 0.8	S
TUN-8	2.67 \pm 1.1	S
TUN-9*	-	-
TUN-13	2.33 \pm 1.5	S
TUN-16	0.83 \pm 0.6	R
TUN-18*	-	-
TUN-19	0.67 \pm 0.5	R
TUN-24	2.00 \pm 1.0	S
TUN-25	0.83 \pm 0.5	R
TUN-26	1.67 \pm 0.6	S
Differential cultivars		
Bola de Oro	4.00 \pm 0.0	S
PMR45	4.00 \pm 0.0	S
Edisto47	0.33 \pm 0.2	R
PMR5	0.16 \pm 0.1	R
PI414723	0.33 \pm 0.2	R

*Tun-9 and Tun-18 were not evaluated due to poor amounts of seeds.

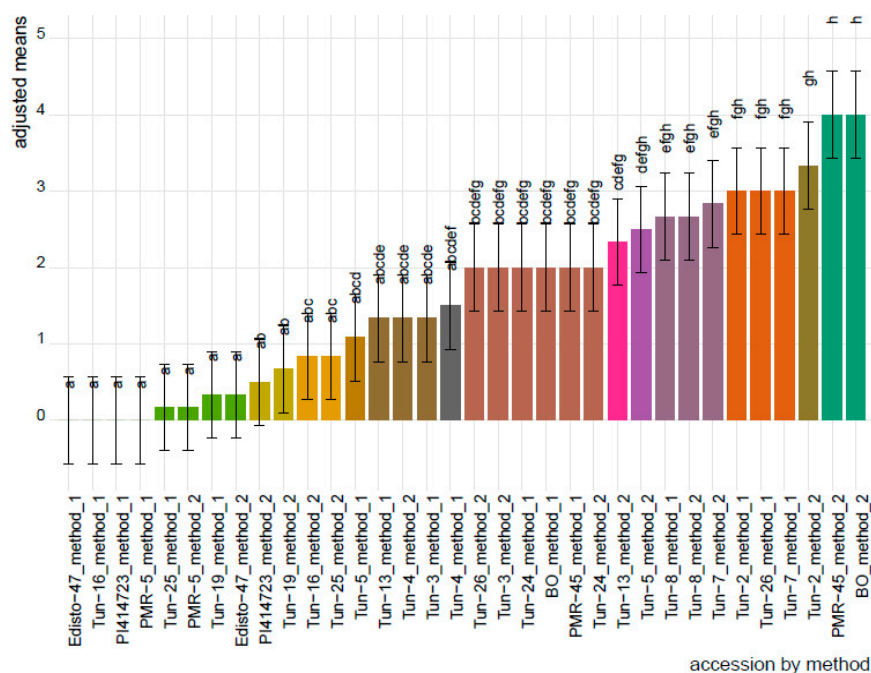


Figure S1. Least squares means with letters display ($p < 0.05$) for the significant interaction effect between method and accession on the *P. xanthii* race 2 reaction, displaying high variation among accession/method combinations; method_1: artificial inoculation in growth chamber and method_2: natural infection. Means with the same letter are not significantly different (Tukey test, $p < 0.05$).

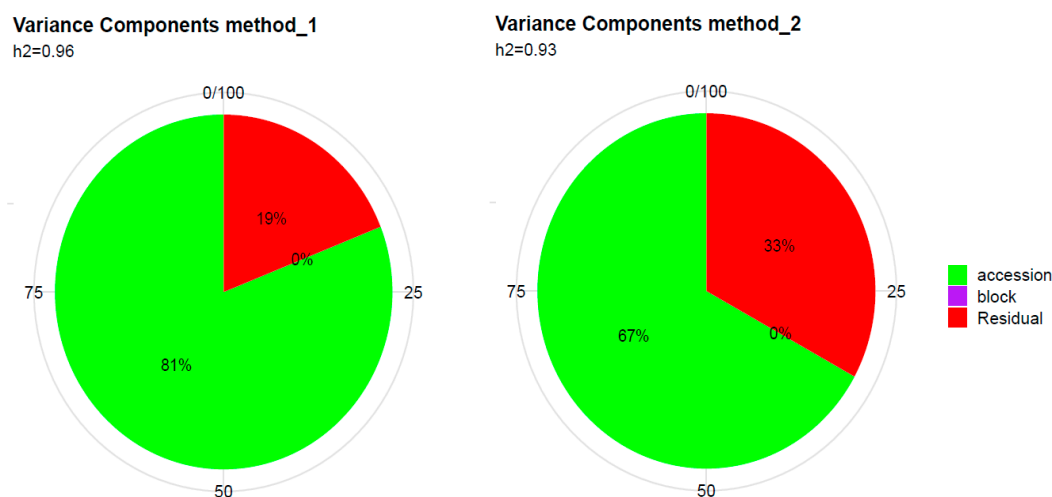


Figure S2. Display the extent of variance components influencing the *P. xanthii* race 2 response in each method used (method_1: artificial inoculation in growth chamber and method_2: natural infection).