

## HPLC Chromatogram

### 14-Deoxyandrographolide 1,000 ppm

8/4/2565 13:46:38 Page 1 / 1



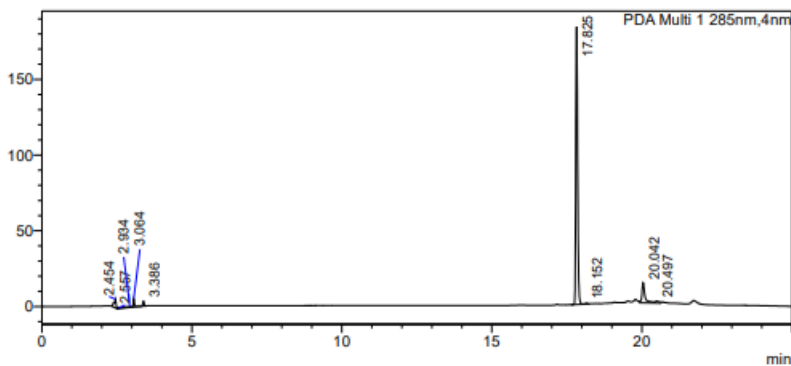
## Analysis Report

### <Sample Information>

Sample Name : 14-Deoxyandrographolide1000ppm  
Sample ID : 14-Deoxyandrographolide1000ppm  
Data Filename : 14-Deoxyandrographolide1000ppm.lcd  
Method Filename : Pinostobin gradient.lcm  
Batch Filename : STD.lcb  
Vial # : 1-8  
Injection Volume : 10 uL  
Date Acquired : 8/4/2565 3:22:41  
Date Processed : 8/4/2565 3:47:43  
Sample Type : Unknown  
Acquired by : System Administrator  
Processed by : System Administrator

### <Chromatogram>

mAU



### <Peak Table>

PDA Ch1 285nm							
Peak#	Ret. Time	Area	Height	Conc.	Unit	Mark	Name
1	2.454	25595	5675	0.000			
2	2.557	2363	521	0.000			
3	2.934	13792	627	0.000		V	
4	3.064	15471	5368	0.000		V	
5	3.386	9916	3335	0.000		V	
6	17.825	748669	183436	0.000			
7	18.152	5433	781	0.000		V	
8	20.042	92873	13258	0.000			
9	20.497	13535	1348	0.000		V	
Total		927647	214350				

## HPLC Chromatogram

### 14-Deoxyandrographolide 750 ppm

8/4/2565 13:46:38 Page 1 / 1



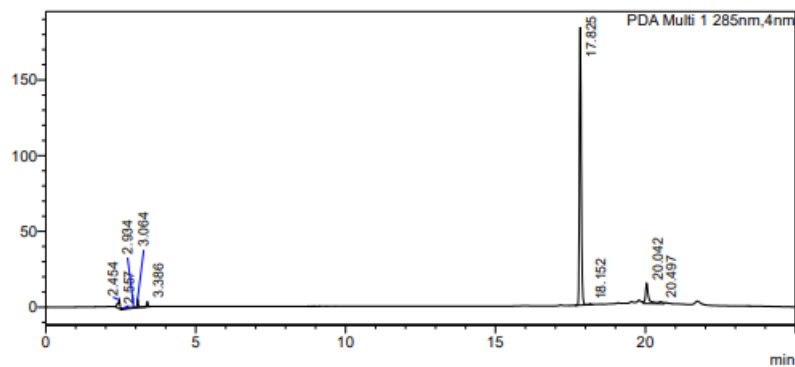
## Analysis Report

### <Sample Information>

Sample Name : 14-Deoxyandrographolide1000ppm  
Sample ID : 14-Deoxyandrographolide1000ppm  
Data Filename : 14-Deoxyandrographolide1000ppm.lcd  
Method Filename : Pinostobin gradient.lcm  
Batch Filename : STD.lcb  
Vial # : 1-8  
Injection Volume : 10 uL  
Date Acquired : 8/4/2565 3:22:41  
Date Processed : 8/4/2565 3:47:43  
Sample Type : Unknown  
Acquired by : System Administrator  
Processed by : System Administrator

### <Chromatogram>

mAU



### <Peak Table>

PDA Ch1 285nm							
Peak#	Ret. Time	Area	Height	Conc.	Unit	Mark	Name
1	2.454	25595	5675	0.000			
2	2.557	2363	521	0.000			
3	2.934	13792	627	0.000		V	
4	3.064	15471	5368	0.000		V	
5	3.386	9916	3335	0.000		V	
6	17.825	748669	183436	0.000			
7	18.152	5433	781	0.000		V	
8	20.042	92873	13258	0.000			
9	20.497	13535	1348	0.000		V	
Total		927647	214350				

## HPLC Chromatogram

### 14-Deoxyandrographolide 500 ppm

8/4/2565 13:41:19 Page 1 / 1



## Analysis Report

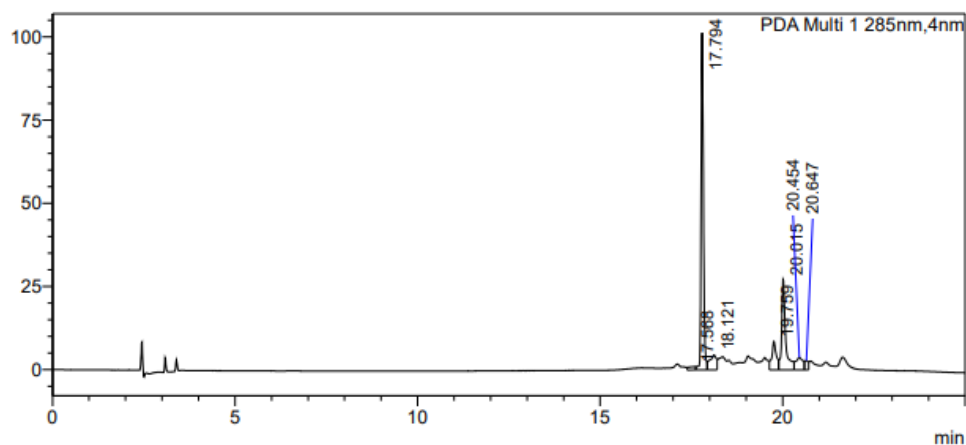
### <Sample Information>

Sample Name : 14-deoxy.500 ppm  
Sample ID : 14-deoxy.500 ppm  
Data Filename : 14-deoxy.500 ppm.lcd  
Method Filename : Pinostobin gradient.lcm  
Batch Filename : STD.lcb  
Vial # : 1-1  
Injection Volume : 10 uL  
Date Acquired : 7/4/2565 17:50:11  
Date Processed : 7/4/2565 23:32:56

Sample Type : Unknown  
Acquired by : System Administrator  
Processed by : System Administrator

### <Chromatogram>

mAU



### <Peak Table>

PDA Ch1 285nm

Peak#	Ret. Time	Area	Height	Conc.	Unit	Mark	Name
1	17.568	12967	984	0.000			
2	17.794	445188	101274	0.000		V	
3	18.121	57283	4528	0.000		V	
4	19.759	74053	8555	0.000			
5	20.015	199715	27078	0.000		V	
6	20.454	51604	3748	0.000		V	
7	20.647	18493	2757	0.000		V	
Total		859303	148924				

## HPLC Chromatogram

Andrographolide 1,000 ppm



# Analysis Report

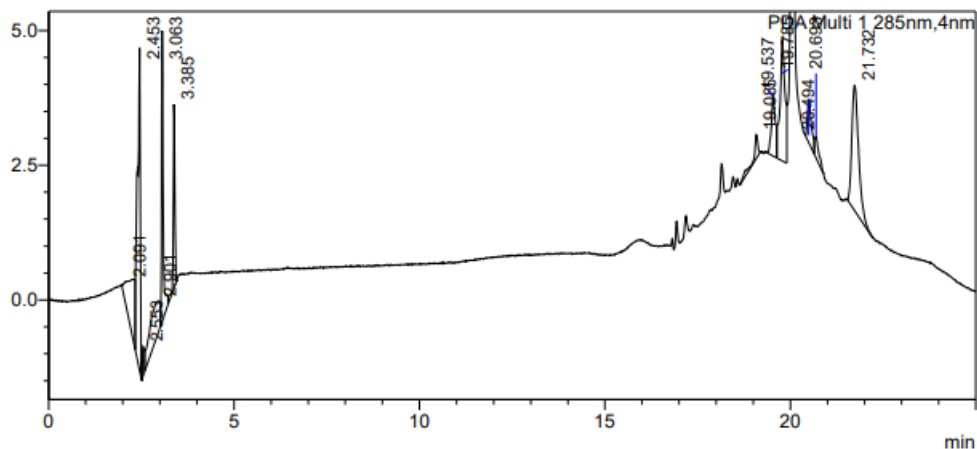
### <Sample Information>

Sample Name : andrographolide1000ppm  
Sample ID : andrographolide1000ppm  
Data Filename : andrographolide1000ppm.lcd  
Method Filename : Pinostobin gradient.lcm  
Batch Filename : STD.lcb  
Vial # : 1-7  
Injection Volume : 10 uL  
Date Acquired : 8/4/2565 2:57:11  
Date Processed : 8/4/2565 3:22:12

Sample Type : Unknown  
Acquired by : System Administrator  
Processed by : System Administrator

### <Chromatogram>

mAU



### <Peak Table>

PDA Ch1 285nm

Peak#	Ret. Time	Area	Height	Conc.	Unit	Mark	Name
1	2.091	14597	451	0.000			
2	2.453	30852	5993	0.000		V	
3	2.553	2130	532	0.000			
4	2.901	14043	674	0.000		V	
5	3.063	15468	5393	0.000		V	
6	3.385	9978	3399	0.000		V	
7	19.085	3554	434	0.000			
8	19.537	8716	1144	0.000			
9	19.785	20877	2243	0.000		V	
10	20.494	6071	788	0.000			
11	20.693	3041	400	0.000		V	
12	21.732	29518	2326	0.000			
Total		158846	23779				

## HPLC Chromatogram

### Andrographolide 750 ppm



SHIMADZU  
LabSolutions

## Analysis Report

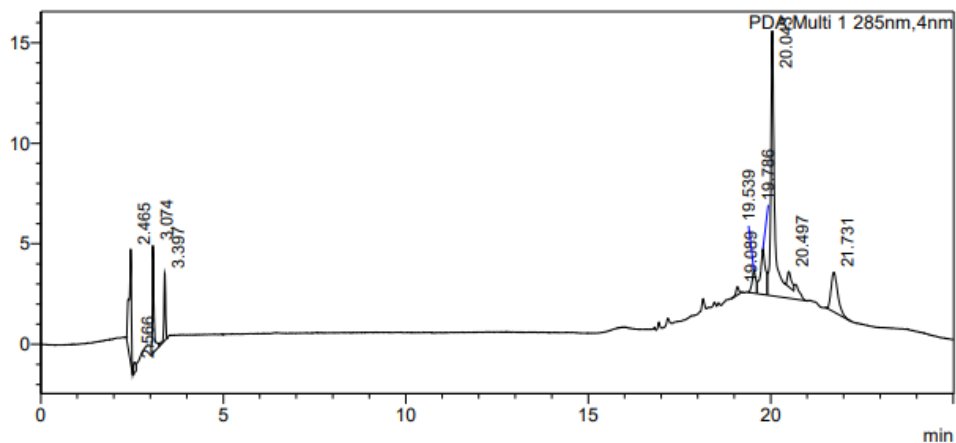
### <Sample Information>

Sample Name : neonadro750ppm  
Sample ID : neonadro750ppm  
Data Filename : neonadro750ppm.lcd  
Method Filename : Pinostobin gradient.lcm  
Batch Filename : STD.lcb  
Vial # : 1-5  
Injection Volume : 10 uL  
Date Acquired : 8/4/2565 2:06:09  
Date Processed : 8/4/2565 2:31:11

Sample Type : Unknown  
Acquired by : System Administrator  
Processed by : System Administrator

### <Chromatogram>

mAU



### <Peak Table>

PDA Ch1 285nm

Peak#	Ret. Time	Area	Height	Conc.	Unit	Mark	Name
1	2.465	24425	5684	0.000			
2	2.566	2362	523	0.000			
3	3.074	15755	5359	0.000			
4	3.397	10164	3356	0.000		V	
5	19.089	2366	413	0.000			
6	19.539	8163	1153	0.000			
7	19.786	21393	2256	0.000		V	
8	20.043	108146	13186	0.000		SV	
9	20.497	5901	754	0.000		T	
10	21.731	24944	1968	0.000			
Total		223618	34652				

## HPLC Chromatogram

Andrographolide 500 ppm



# Analysis Report

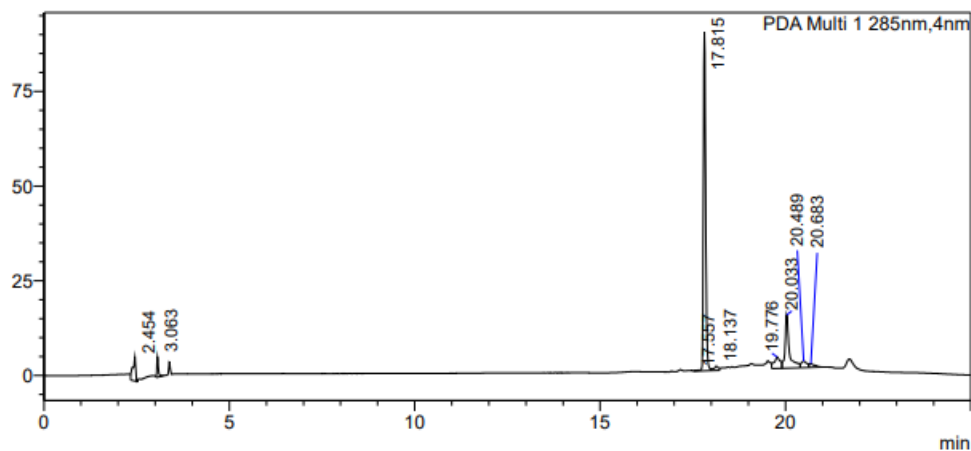
### <Sample Information>

Sample Name : 500ppm  
Sample ID : 500ppm  
Data Filename : 500ppm.lcd  
Method Filename : Pinostobin gradient.lcm  
Batch Filename : STD.lcb  
Vial # : 1-4  
Injection Volume : 10 uL  
Date Acquired : 8/4/2565 1:40:37  
Date Processed : 8/4/2565 2:05:39

Sample Type : Unknown  
Acquired by : System Administrator  
Processed by : System Administrator

### <Chromatogram>

mAU



### <Peak Table>

PDA Ch1 285nm

Peak#	Ret. Time	Area	Height	Conc.	Unit	Mark	Name
1	2.454	31976	6131	0.000			
2	3.063	15533	5377	0.000			
3	17.557	1441	234	0.000			
4	17.815	371286	89399	0.000		V	
5	18.137	10145	1156	0.000		V	
6	19.776	34897	3049	0.000			
7	20.033	110599	14071	0.000		V	
8	20.489	18372	1734	0.000		V	
9	20.683	9806	947	0.000		V	
Total		604056	122098				