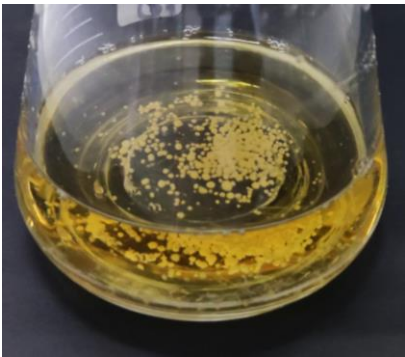


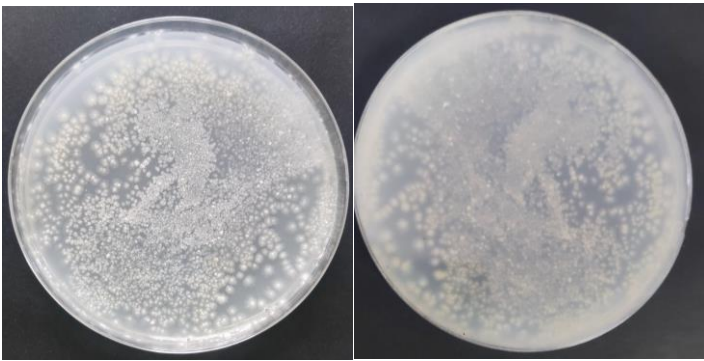
Supplementary

Table S1. DNA sample detection results of *Streptomyces fradiae* sf106

| sample | DNA concentration (ng/μl) | Total (μg) | OD260/280 | OD260/230 |
|--------------------------------------|------------------------------|------------|-----------|-----------|
| <i>Streptomyces fradiae</i> sf106 | 475.00 | 23.75 | 1.84 | 2.05 |



Note: Growth of strain in TSB medium.



Note: Growth of strain in w1-50 medium (front side and back side, respectively).

Figure S1. Growth of *Streptomyces fradiae* sf106 on different media.