

Supplementary Material

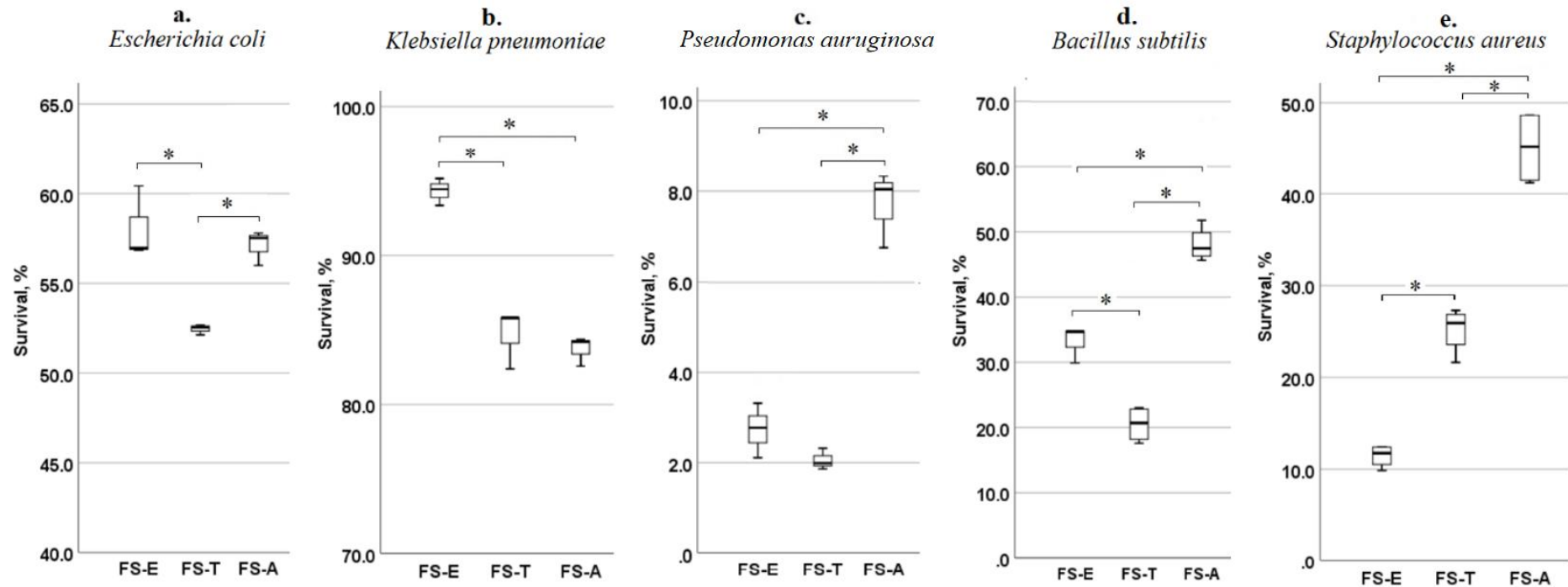


Figure S1. The comparison of inhibitory effects of PAB strains towards *B. subtilis*, *E. coli*, *K. pneumoniae*, *P. aeruginosa* and *S. aureus* after 10 h incubation; * box-plots connected and marked with an asterisk show significant differences between fermentates of different PAB strains ($p < 0.05$); FS-E, FS-T, FS-A—filter-sterilised fermentates of PAB strains *Propionibacterium freudenreichii* (E), *Acidipropionibacterium thoenii* (T) and *Acidipropionibacterium acidipropionici* (A); The assessment of the inhibition potential is based on the survival rate of pathogens when treated with FS-type fermentates: 0–30 % = strong; 31–60 % = moderate and 61–100 % = weak.