

Figure S1. GC-MSD/FID gas-chromatography diagram of clove essential oil

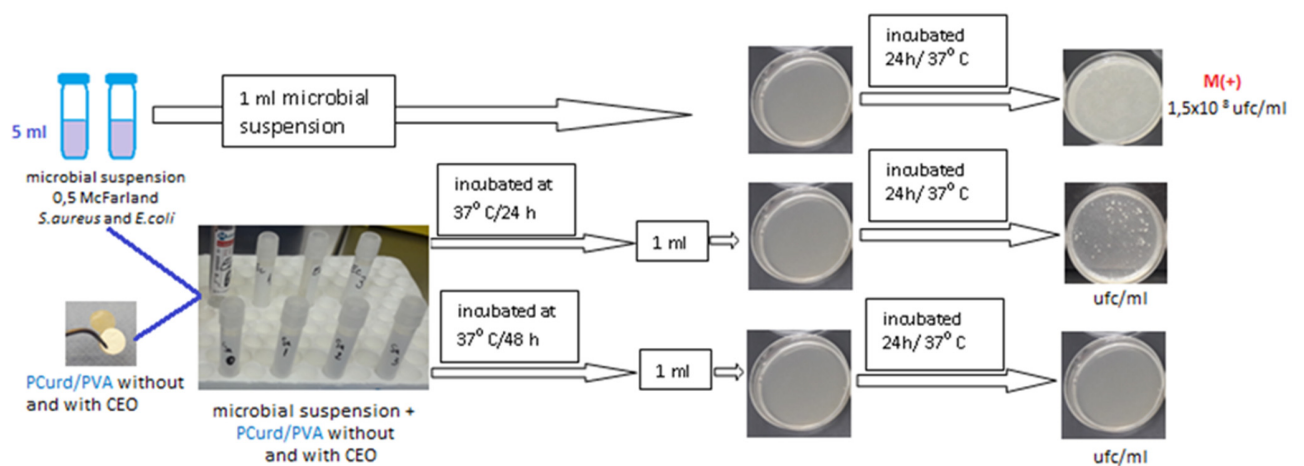


Figure S2. Diagram of work steps: Time kill assay

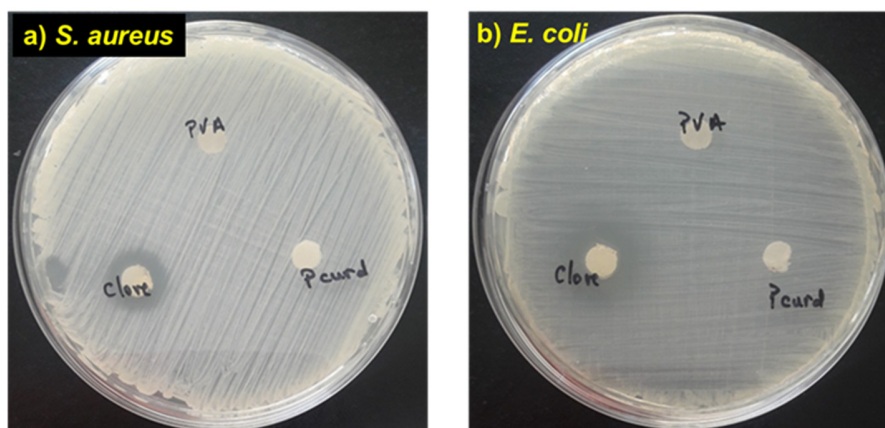


Figure S3. Antibacterial assay test of PCurd, PVA and CEO against *S. aureus* (a) and *E. coli* (b)

Table S1. Test results of antimicrobial activity of PVA, PCurd and Clove essential oil

Sample cod	<i>S. aureus</i> ATCC 25923 [mm]	<i>E. coli</i> ATCC 25922 [mm]
PVA	-	-
PCurd)	-	-
CEO	14	9,94