

Supplementary Materials

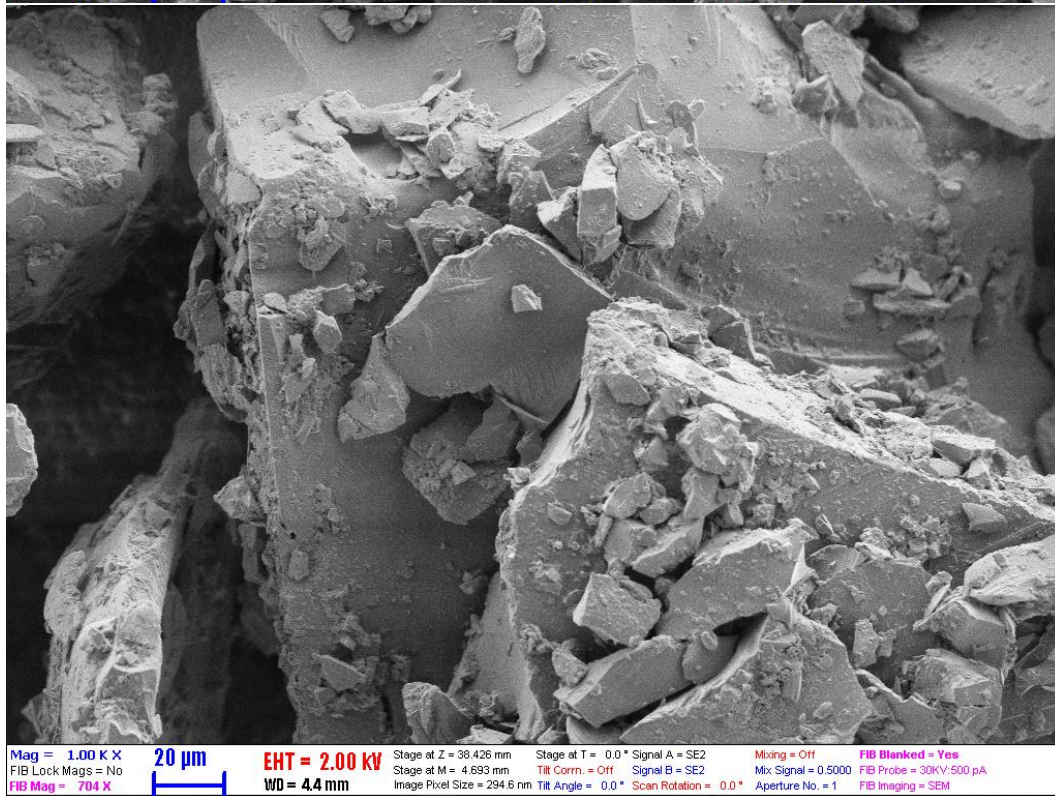
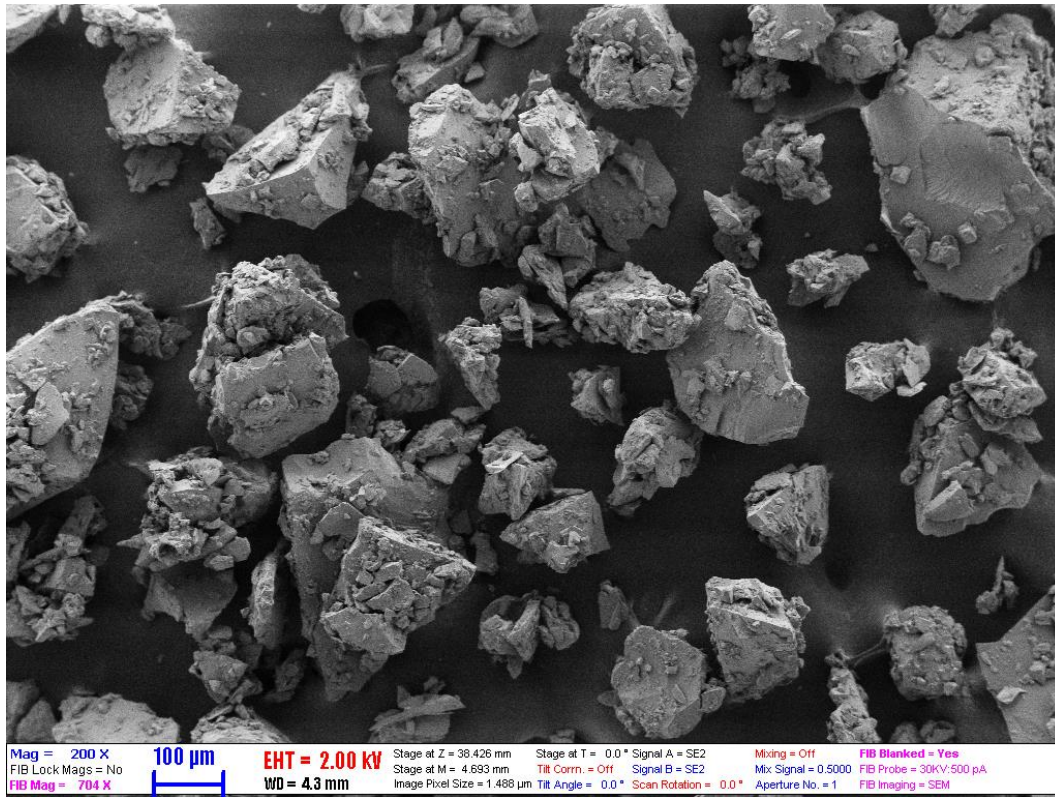
Imidazolium ionic liquids as designer solvents confined in silica nanopores

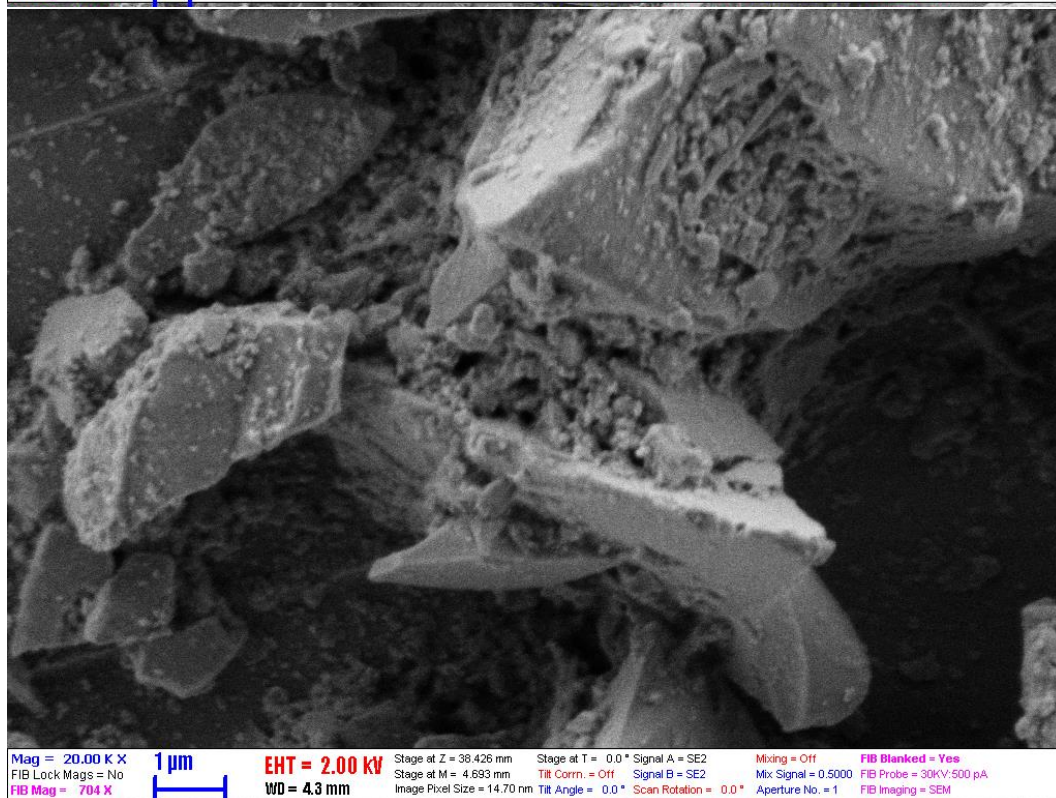
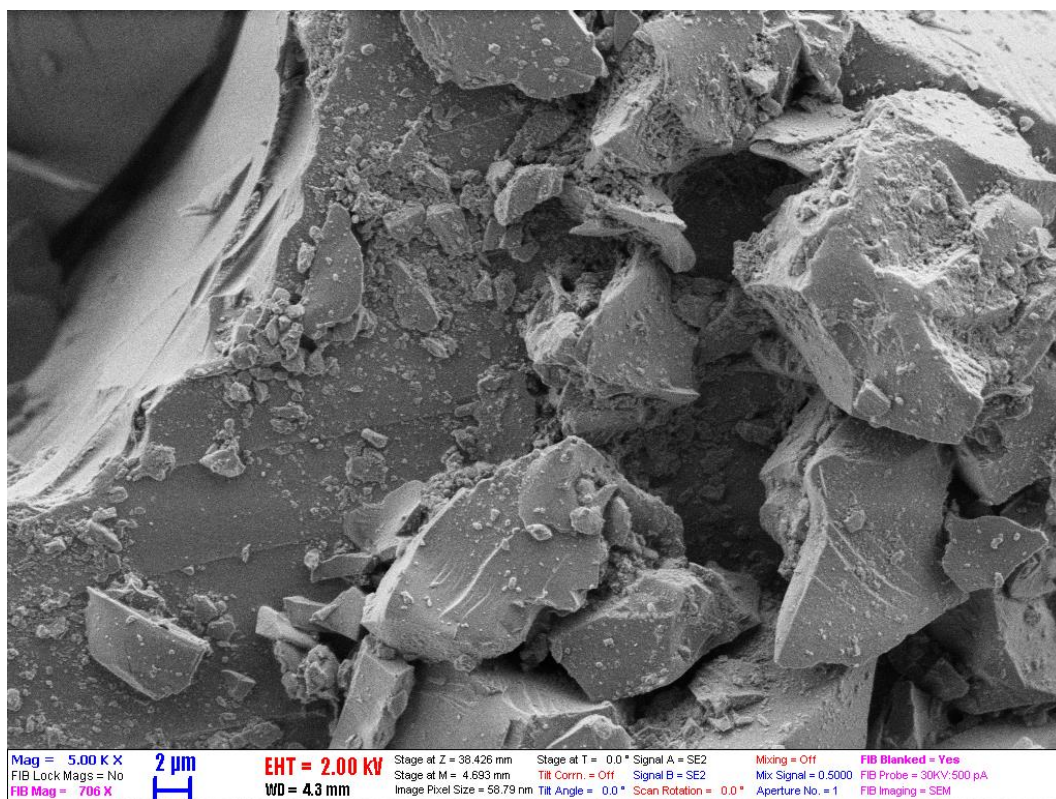
Ana-Maria Putz, Adél Len, László Trif, Zsolt Endre Horváth and László Almásy

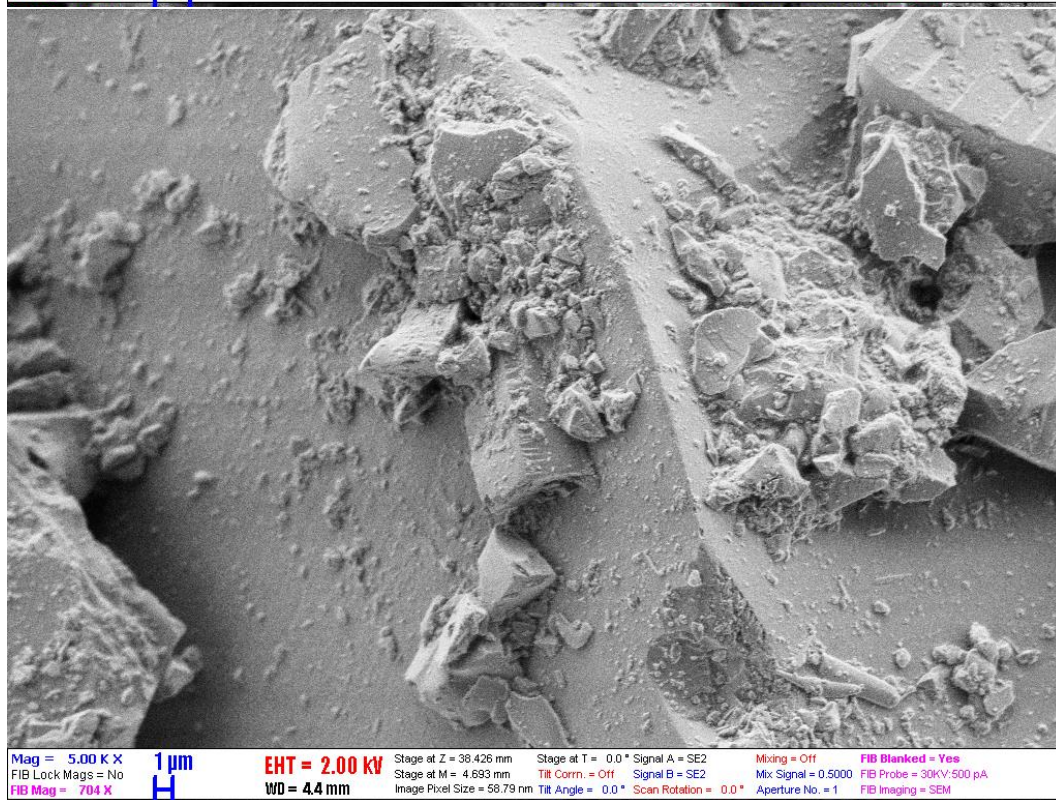
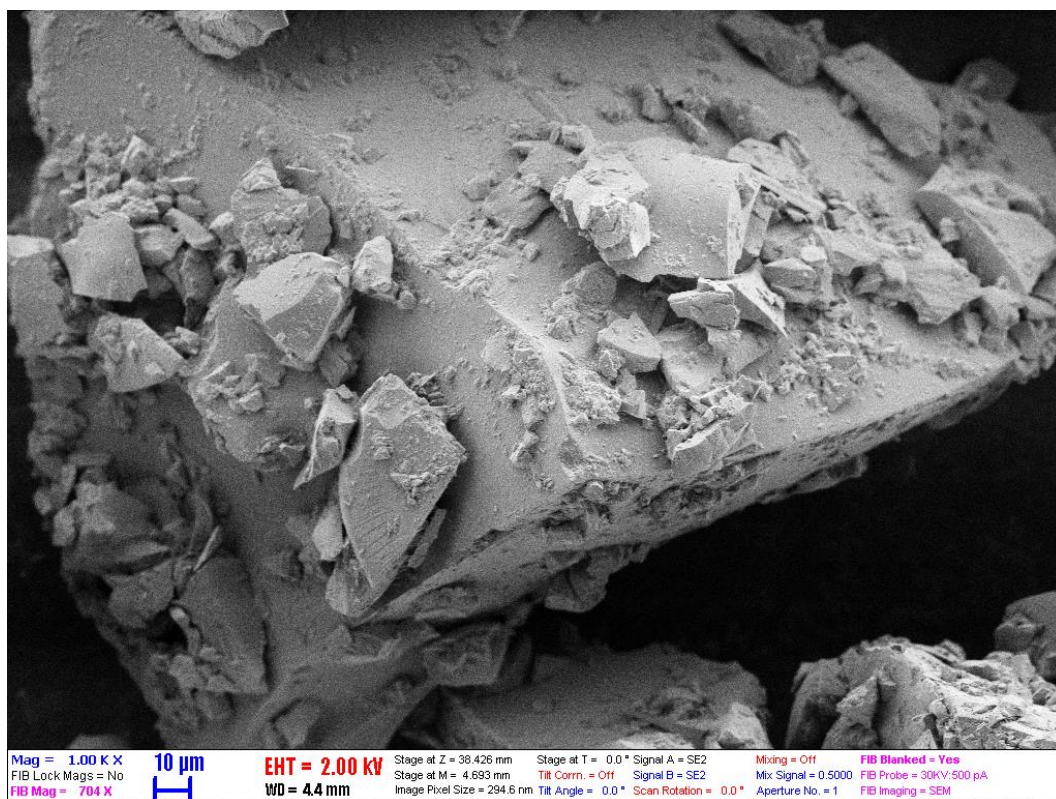
Content

1. SEM micrographs of the IL – silica nanocomposites
2. EDS spectra of the IL – silica nanocomposites

1. SEM micrographs of the IL – silica nanocomposites







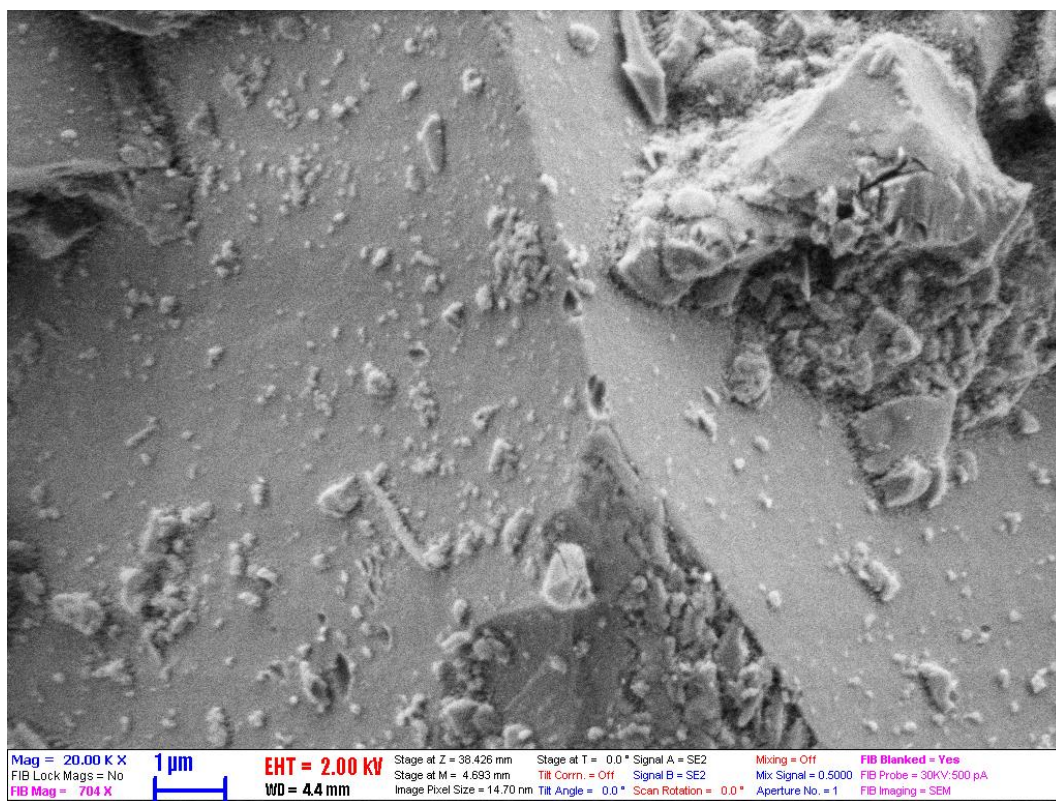
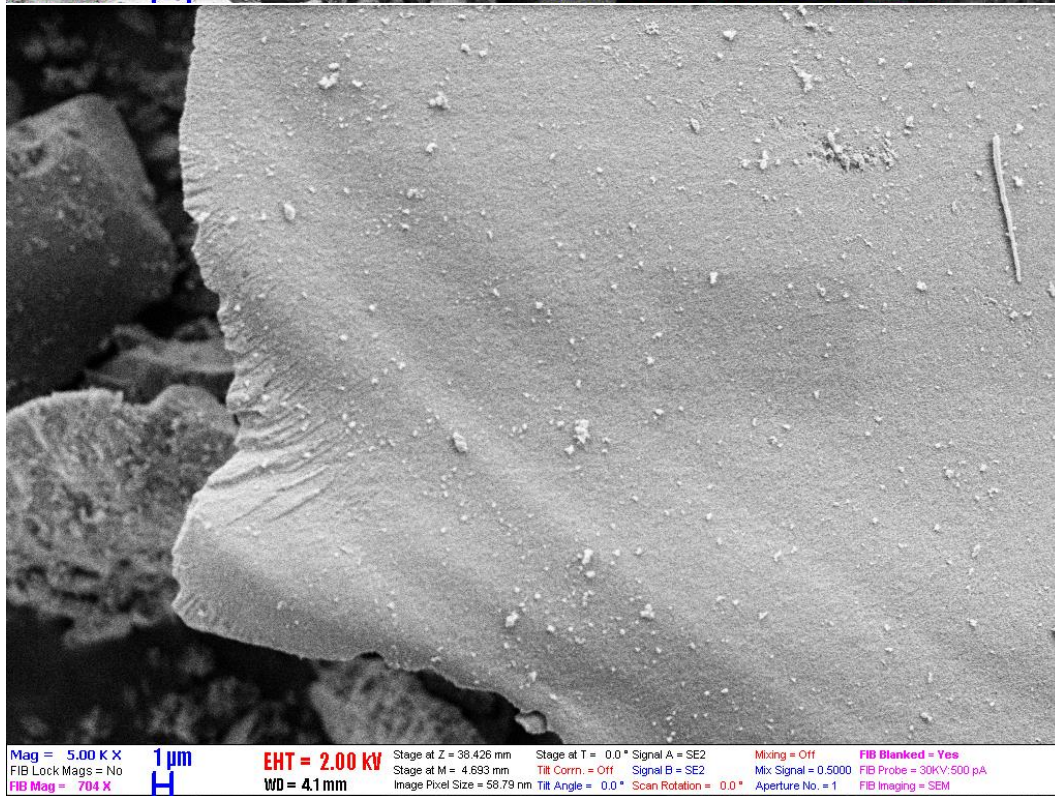
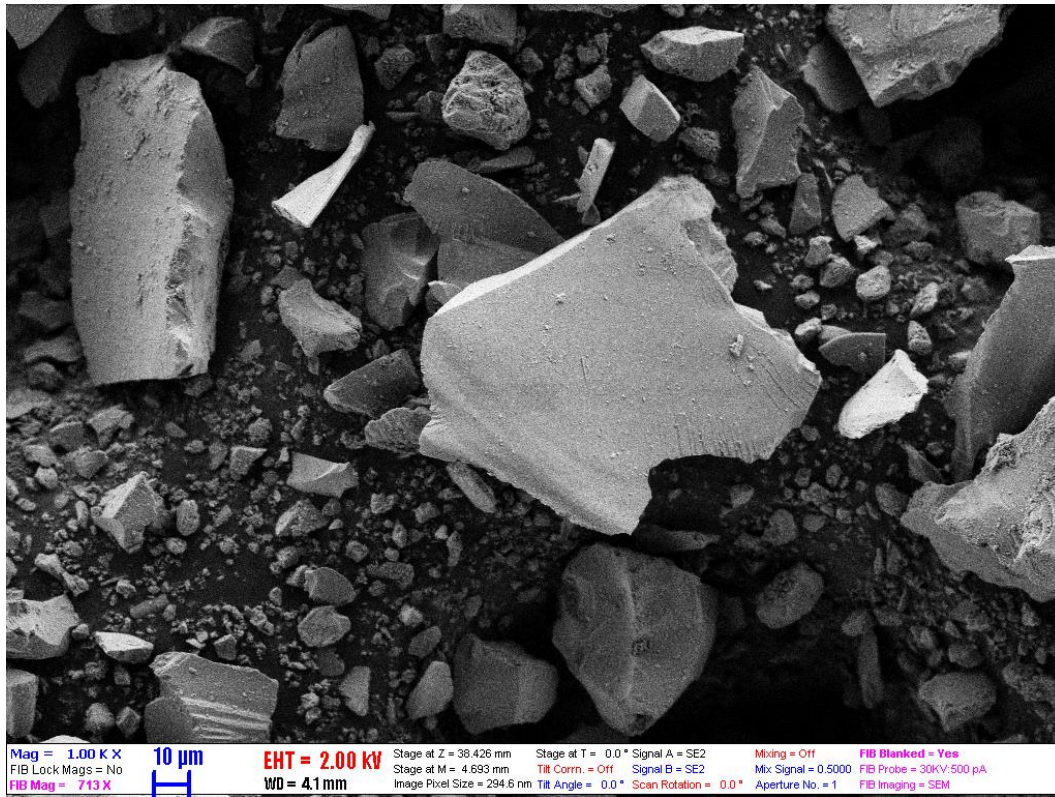
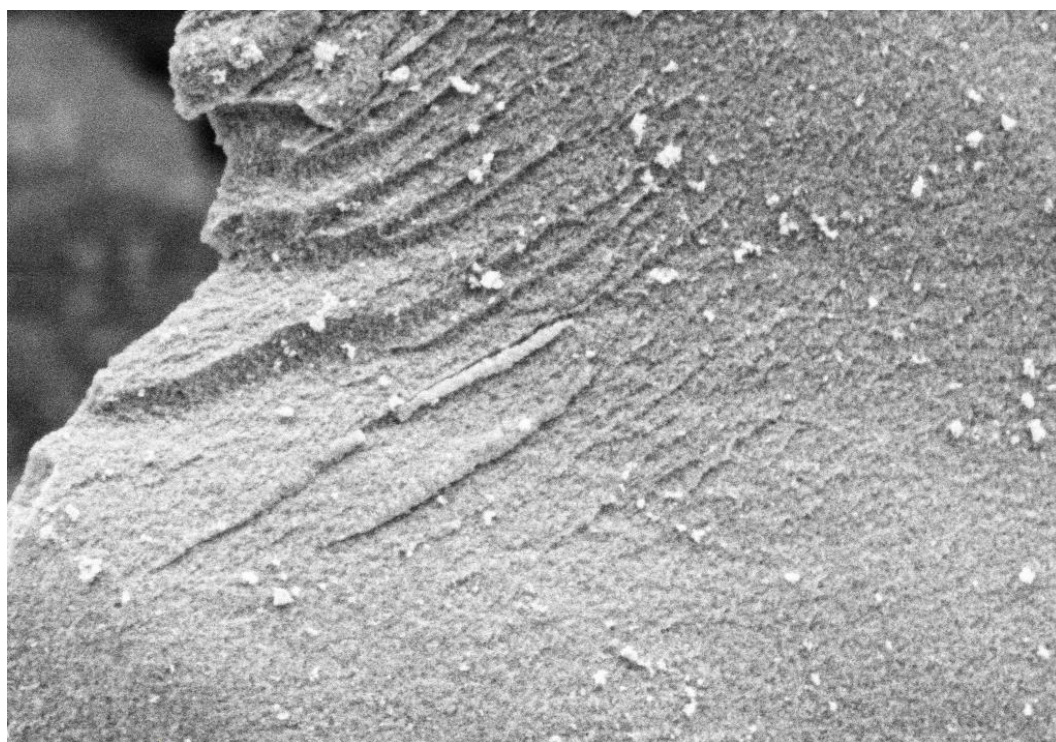
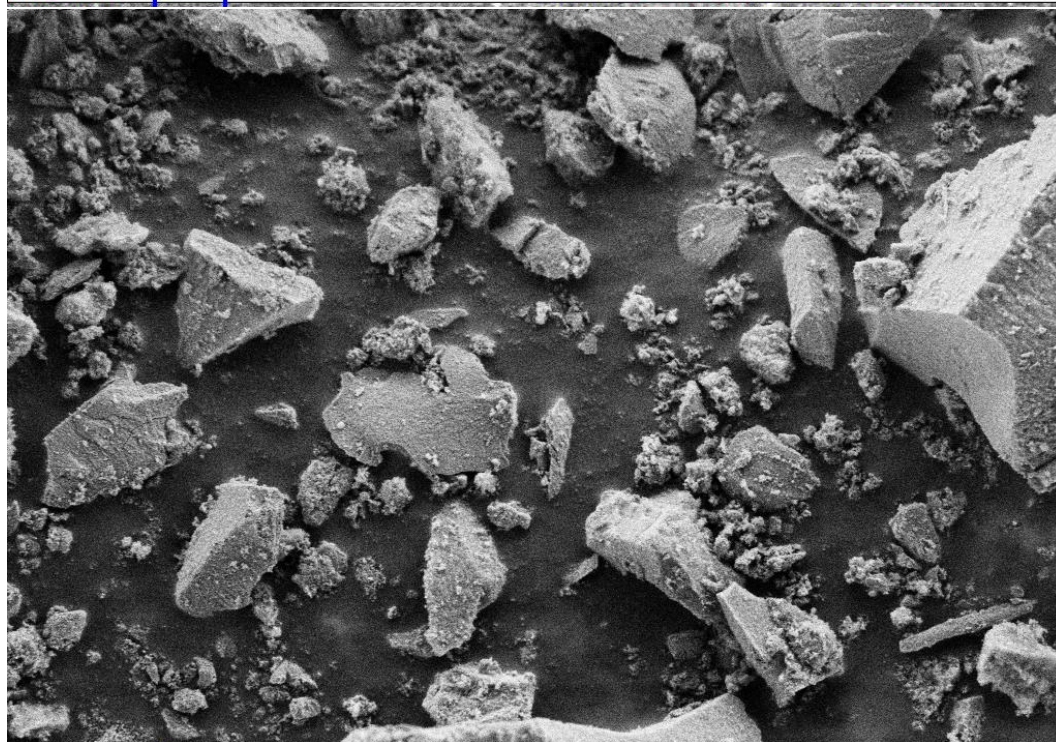


Figure S1 IM-0

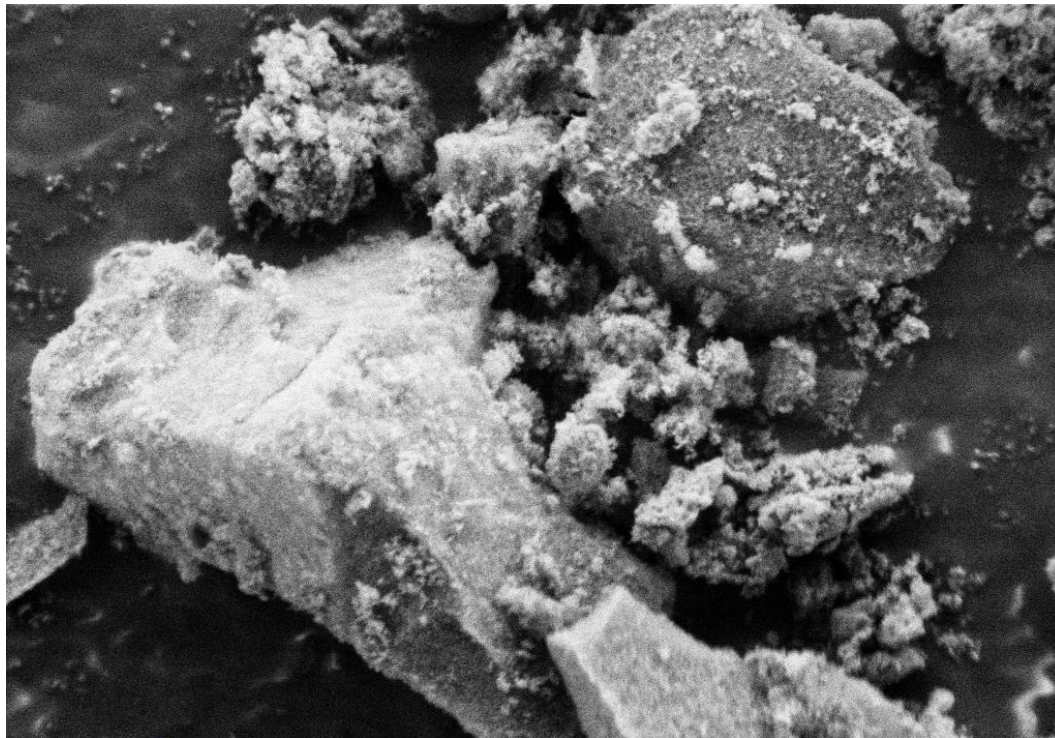




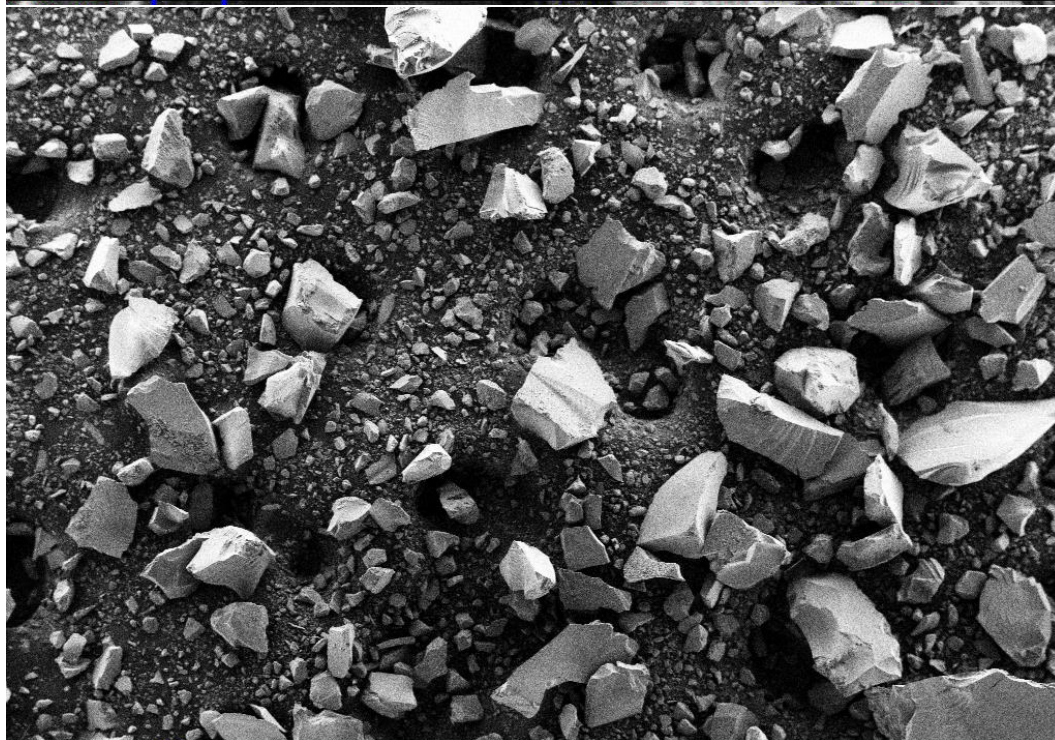
Mag = 20.00 K X	1 μ m	EHT = 2.00 kV	Stage at Z = 38.426 mm	Stage at T = 0.0 °	Signal A = SE2	Mixing = Off	FIB Blanked = Yes
FIB Lock Mags = No		WD = 4.1 mm	Stage at M = 4.693 mm	Tilt Corr. = Off	Signal B = SE2	Mix Signal = 0.5000	FIB Probe = 30KV-500 pA
FIB Mag = 704 X			Image Pixel Size = 14.70 nm	Tilt Angle = 0.0 °	Scan Rotation = 0.0 °	Aperture No. = 1	FIB Imaging = SEM



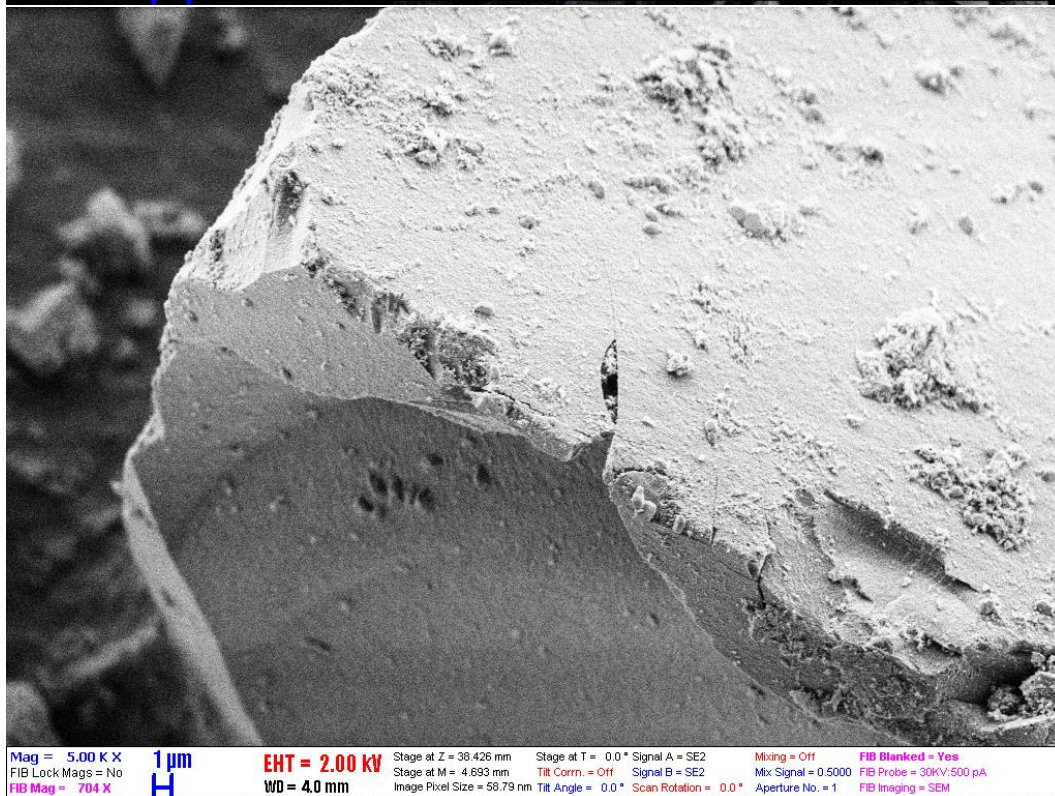
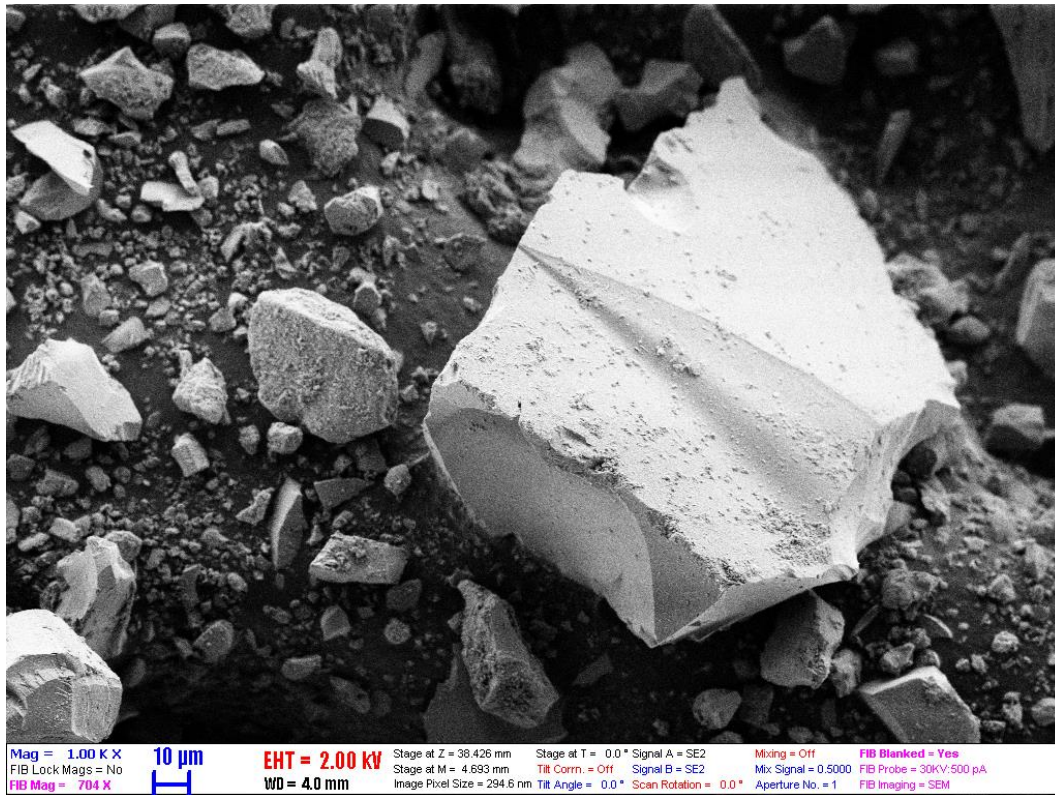
Mag = 5.00 K X	1 μ m	EHT = 2.00 kV	Stage at Z = 38.426 mm	Stage at T = 0.0 °	Signal A = SE2	Mixing = Off	FIB Blanked = Yes
FIB Lock Mags = No		WD = 4.2 mm	Stage at M = 4.693 mm	Tilt Corr. = Off	Signal B = SE2	Mix Signal = 0.5000	FIB Probe = 30KV-500 pA
FIB Mag = 704 X			Image Pixel Size = 58.79 nm	Tilt Angle = 0.0 °	Scan Rotation = 0.0 °	Aperture No. = 1	FIB Imaging = SEM



Mag = 20.00 K X 1 μ m EHT = 2.00 kV Stage at Z = 38.426 mm Stage at T = 0.0° Signal A = SE2 Mixing = Off FIB Blanked = Yes
 FIB Lock Mags = No FIB Mag = 704 X WD = 4.2 mm Stage at M = 4.693 mm Image Pixel Size = 14.70 nm Tilt Corr. = Off Signal B = SE2 Mix Signal = 0.5000 FIB Probe = 30KV-500 pA
 Tilt Angle = 0.0° Scan Rotation = 0.0° Aperture No. = 1 FIB Imaging = SEM



Mag = 200 X 100 μ m EHT = 2.00 kV Stage at Z = 38.426 mm Stage at T = 0.0° Signal A = SE2 Mixing = Off FIB Blanked = Yes
 FIB Lock Mags = No FIB Mag = 704 X WD = 4.0 mm Stage at M = 4.693 mm Image Pixel Size = 1.488 μ m Tilt Corr. = Off Signal B = SE2 Mix Signal = 0.5000 FIB Probe = 30KV-500 pA
 Tilt Angle = 0.0° Scan Rotation = 0.0° Aperture No. = 1 FIB Imaging = SEM



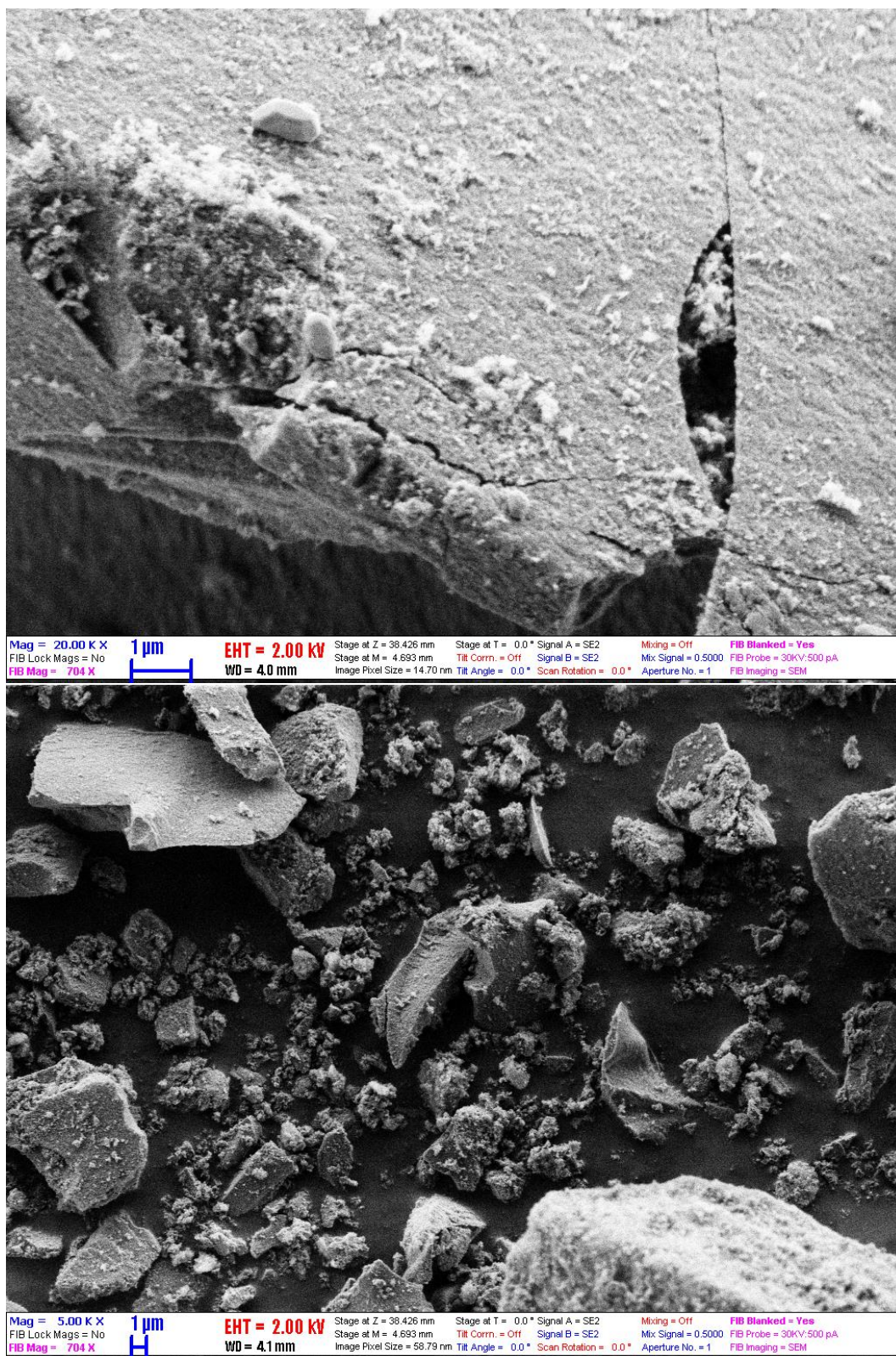
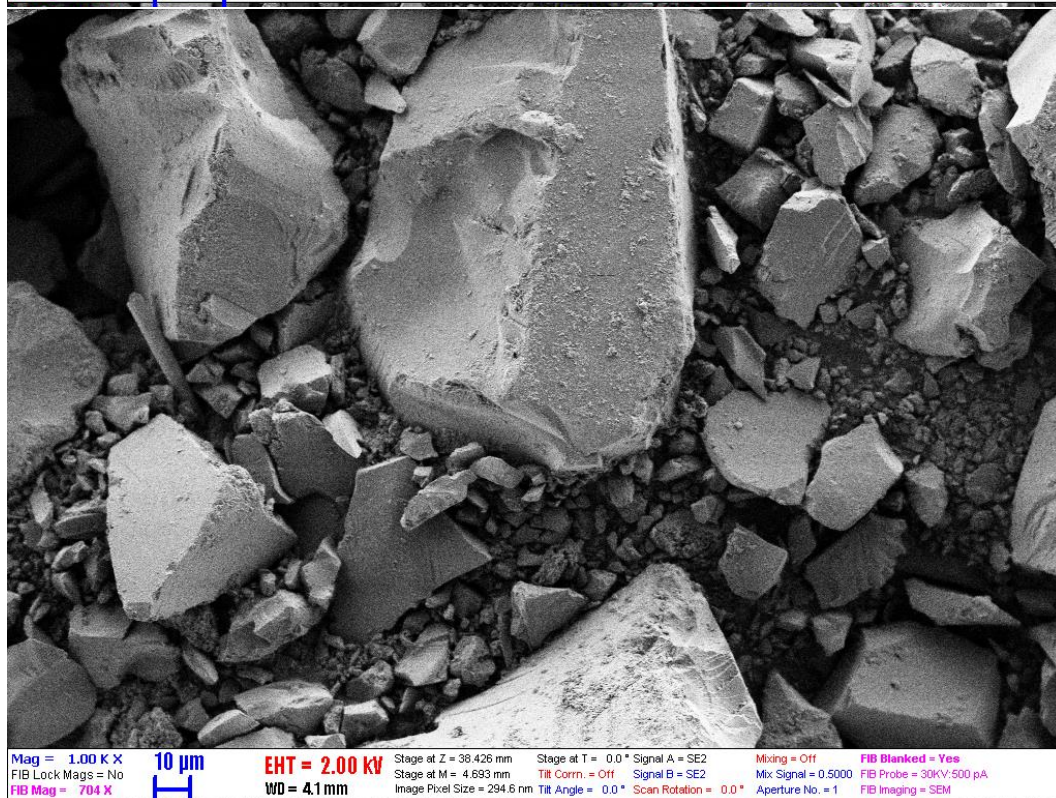
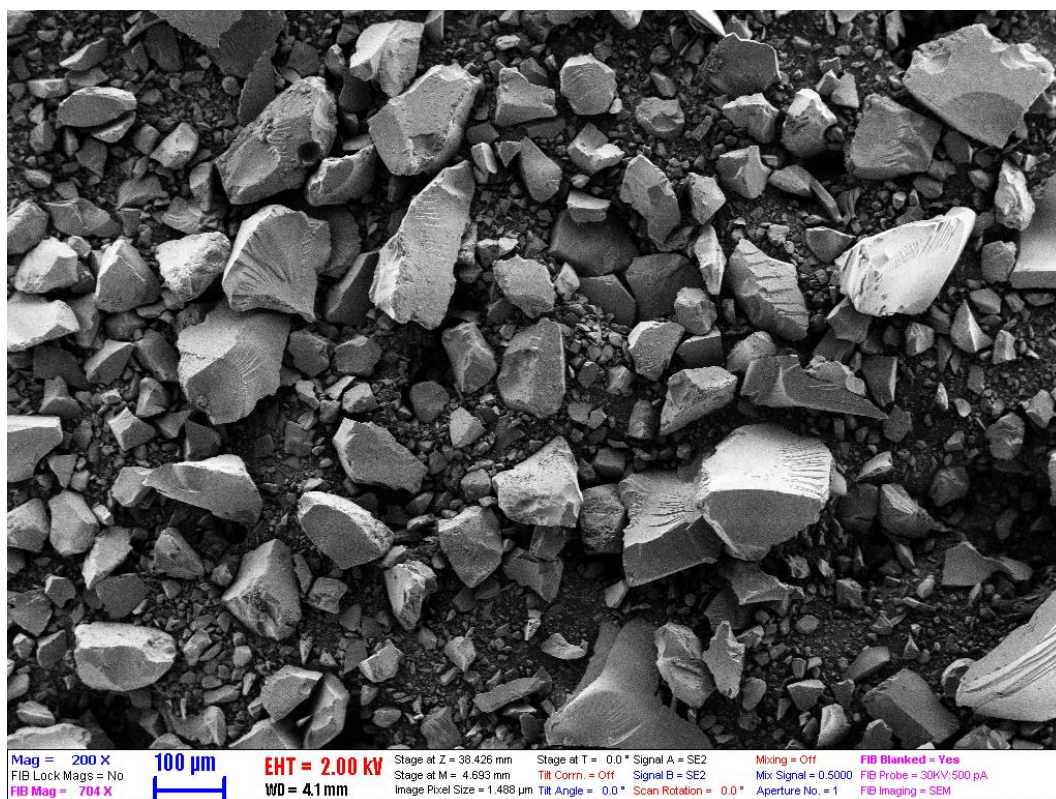
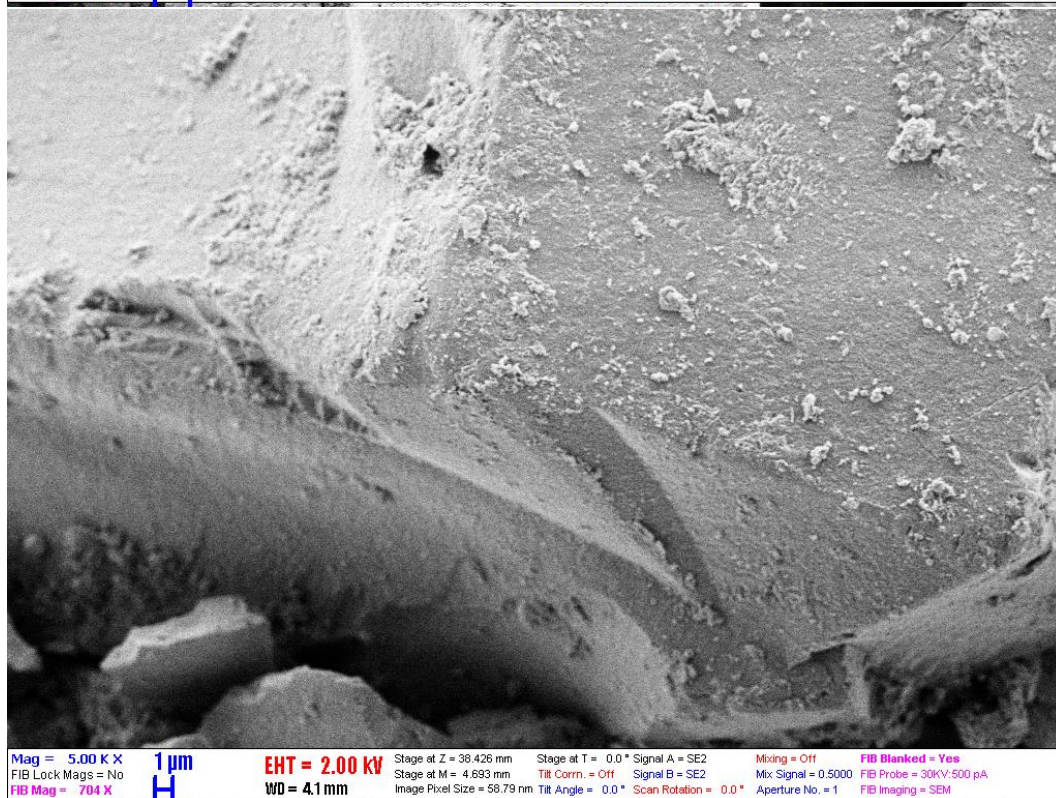
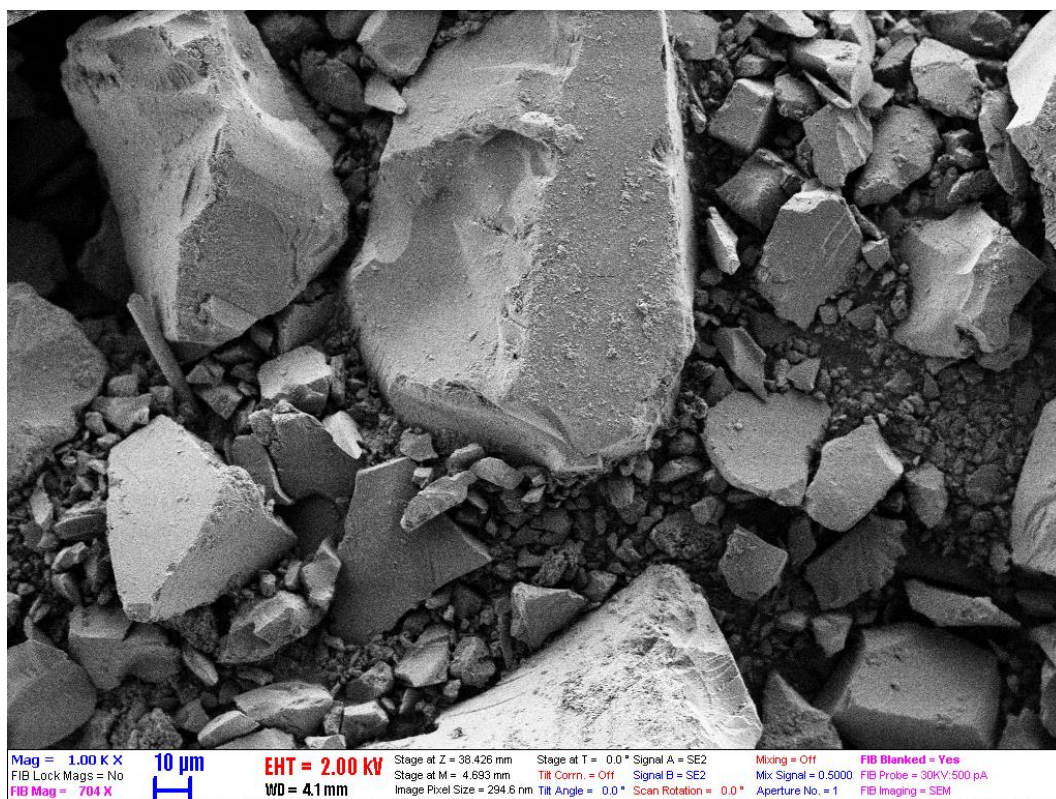
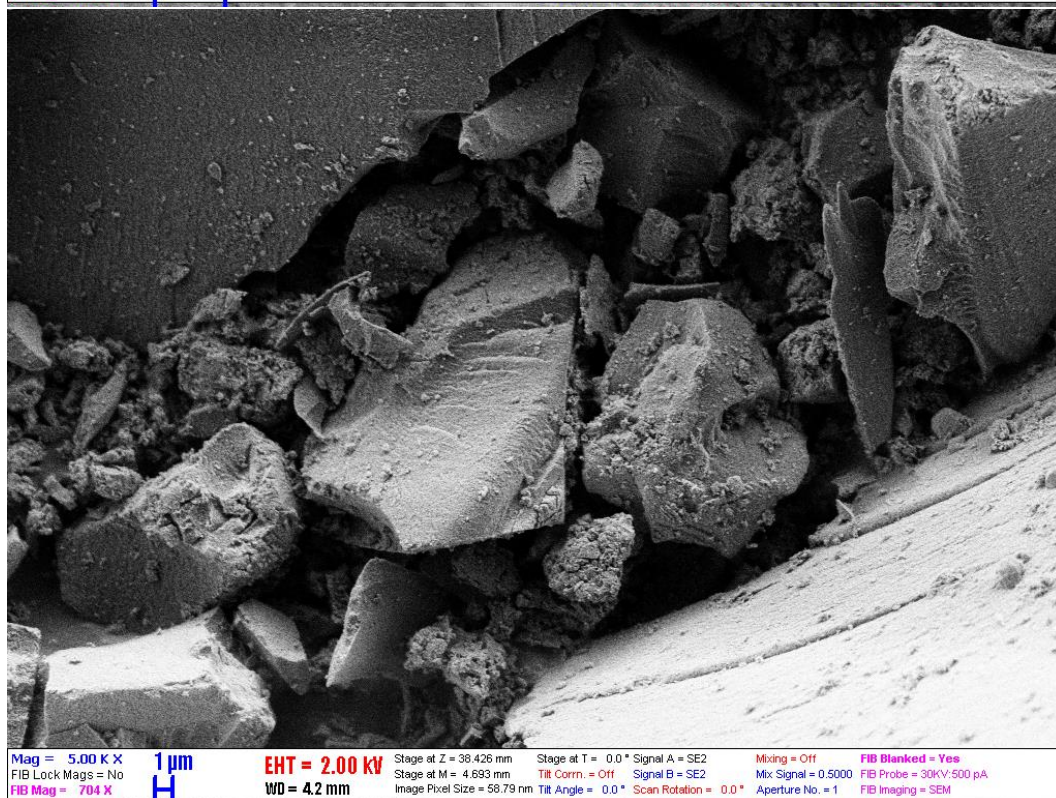
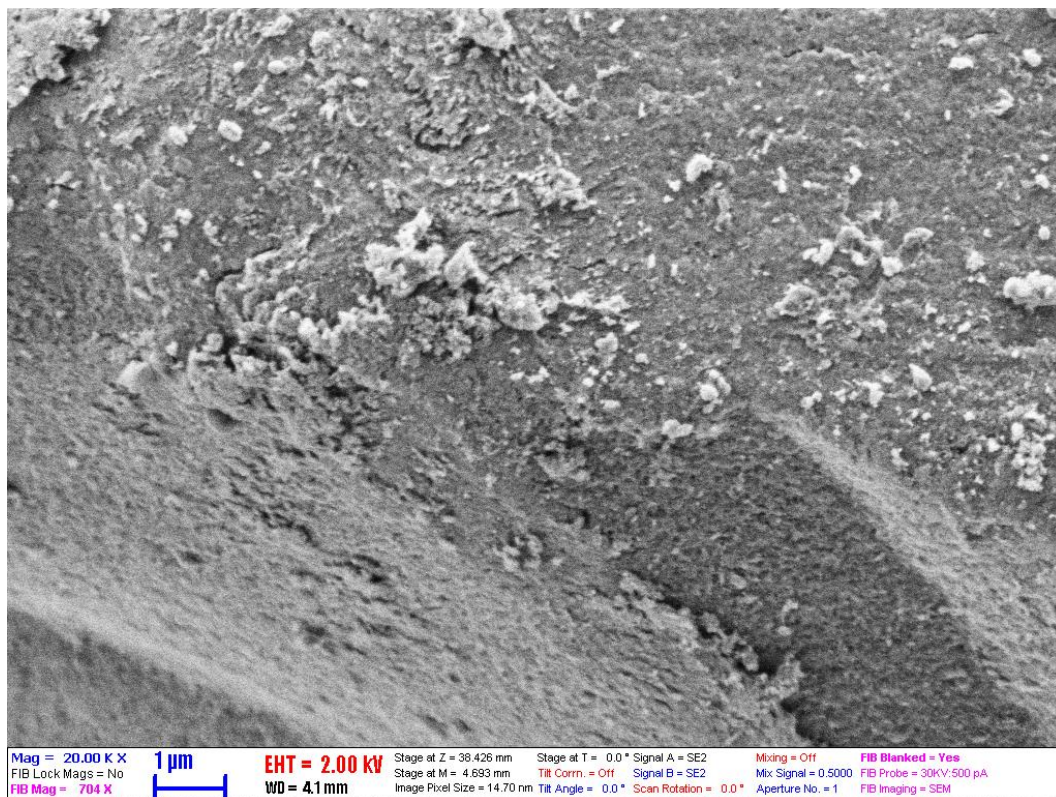
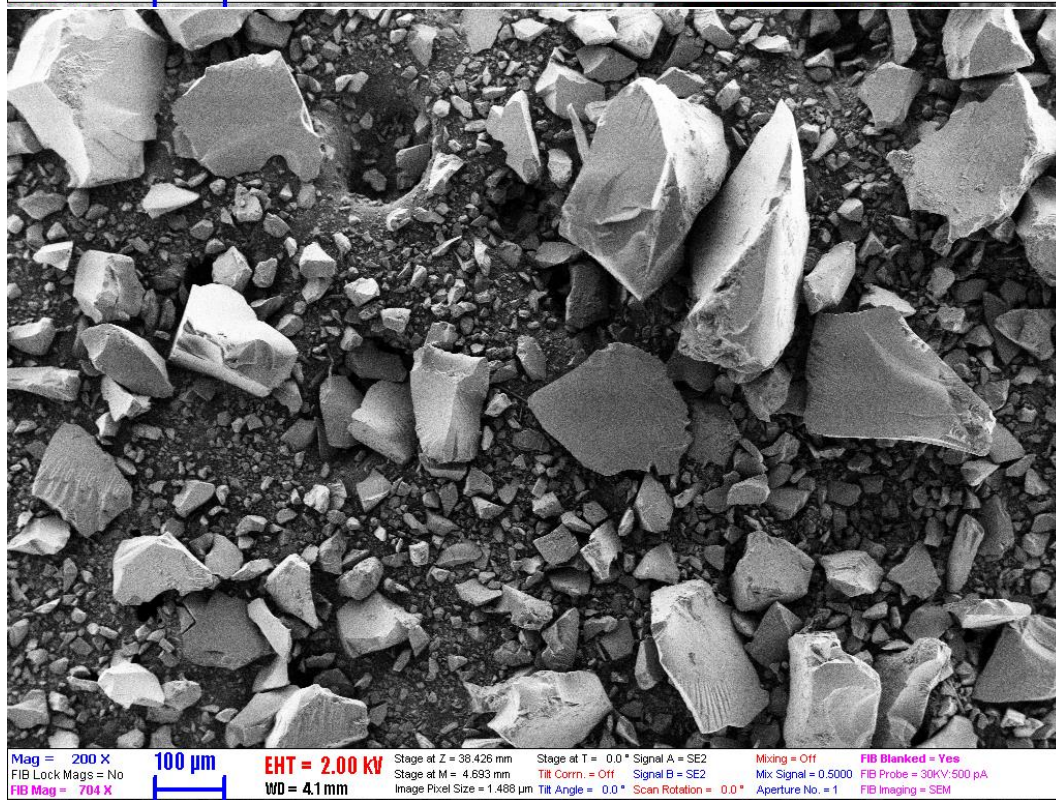
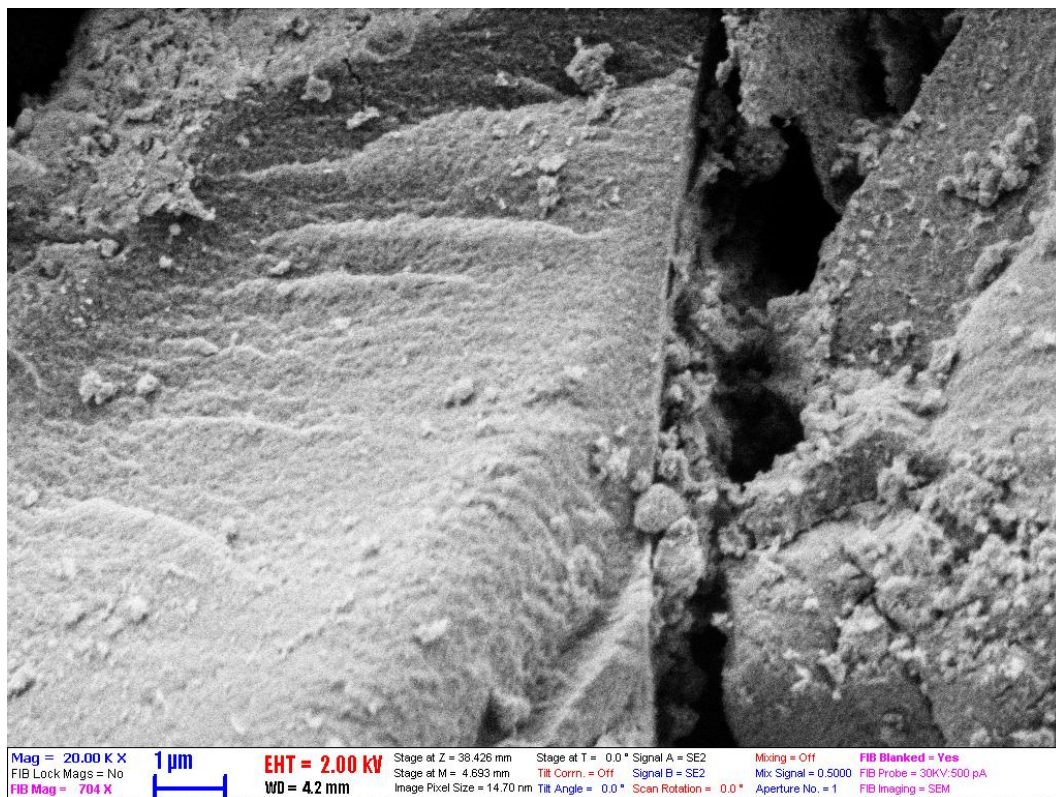


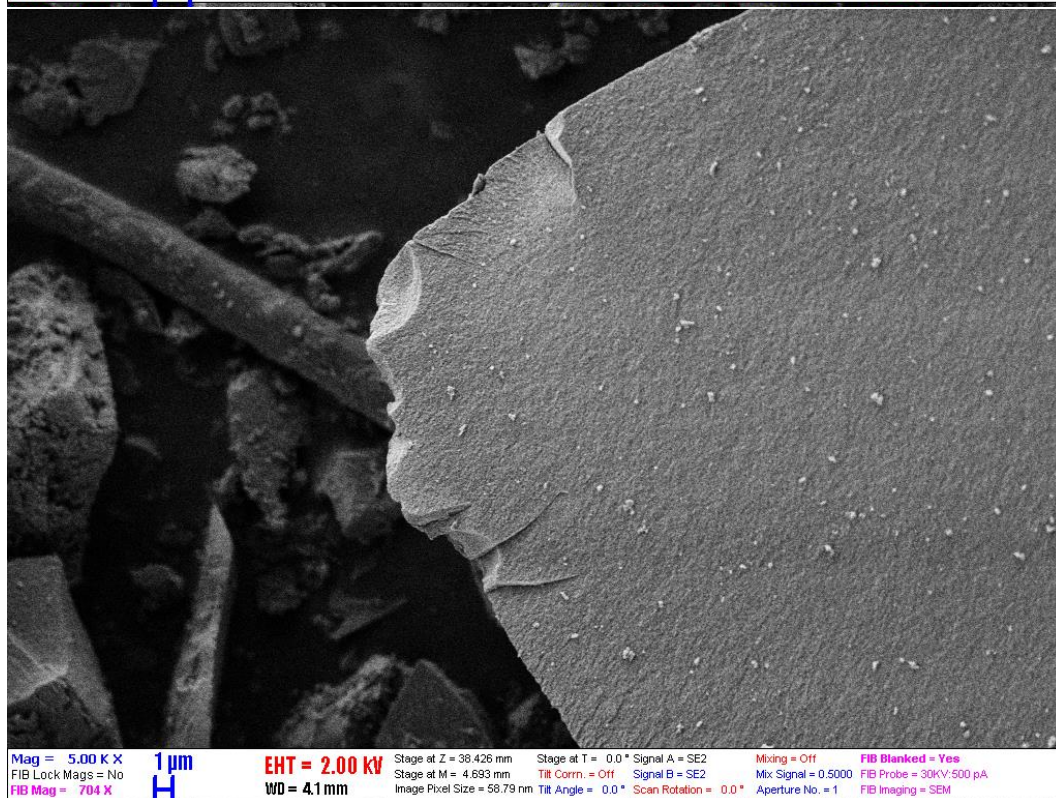
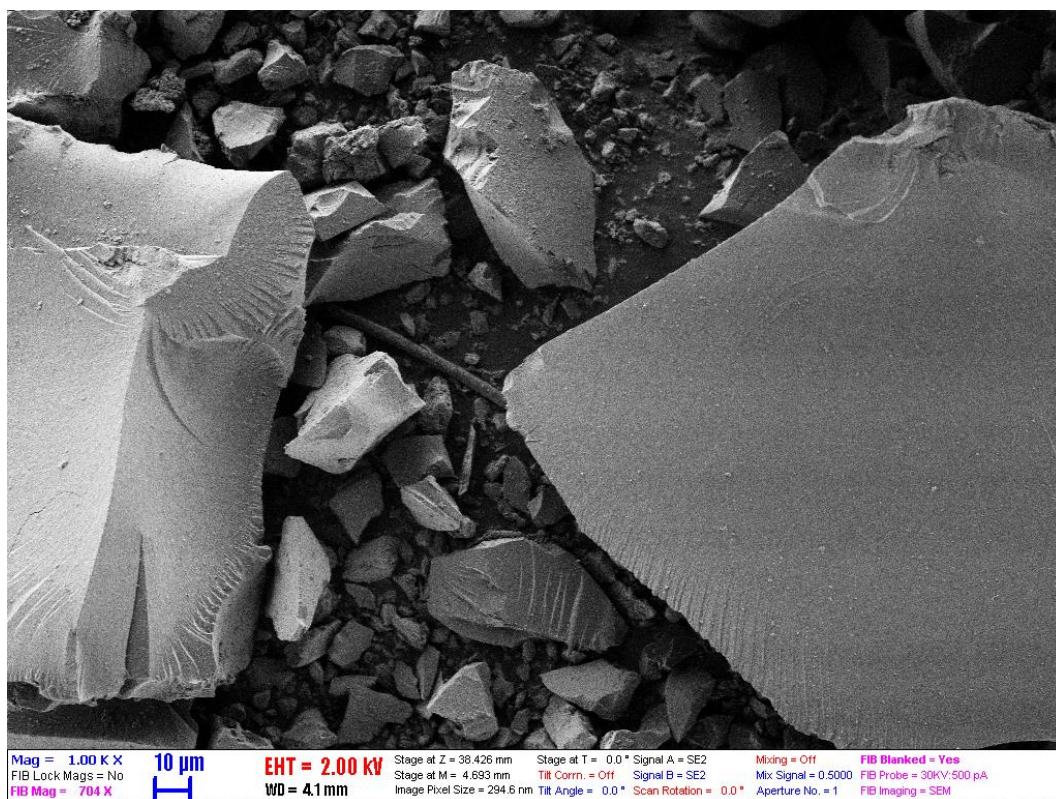
Figure S2. IM-BF4-0.1

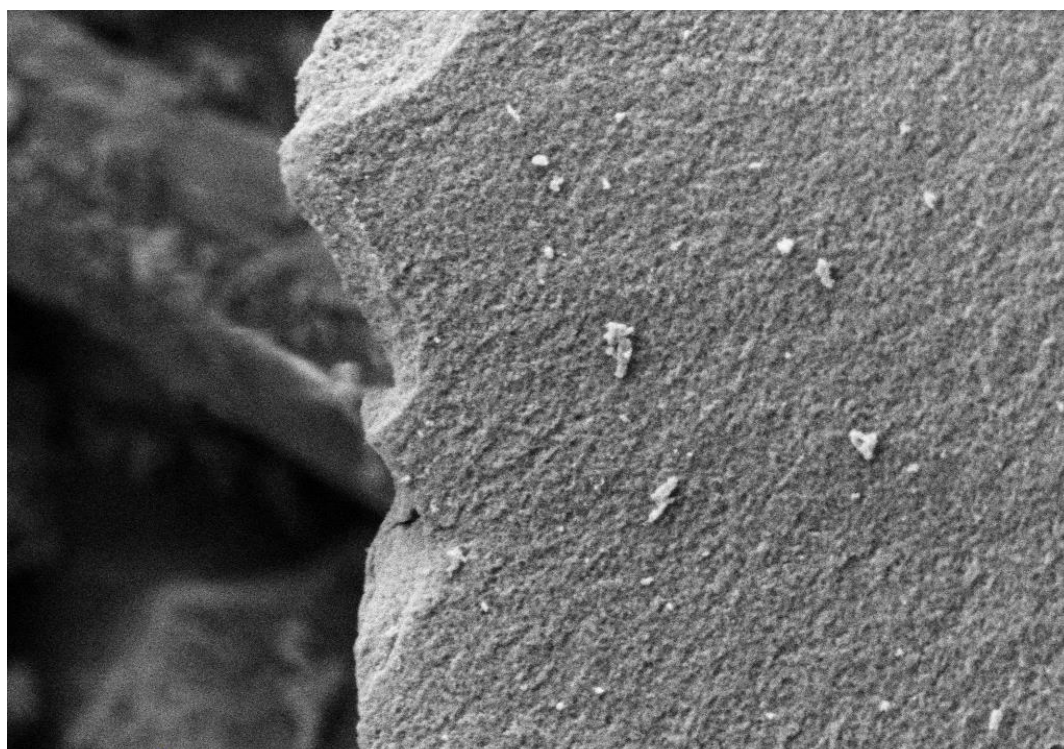




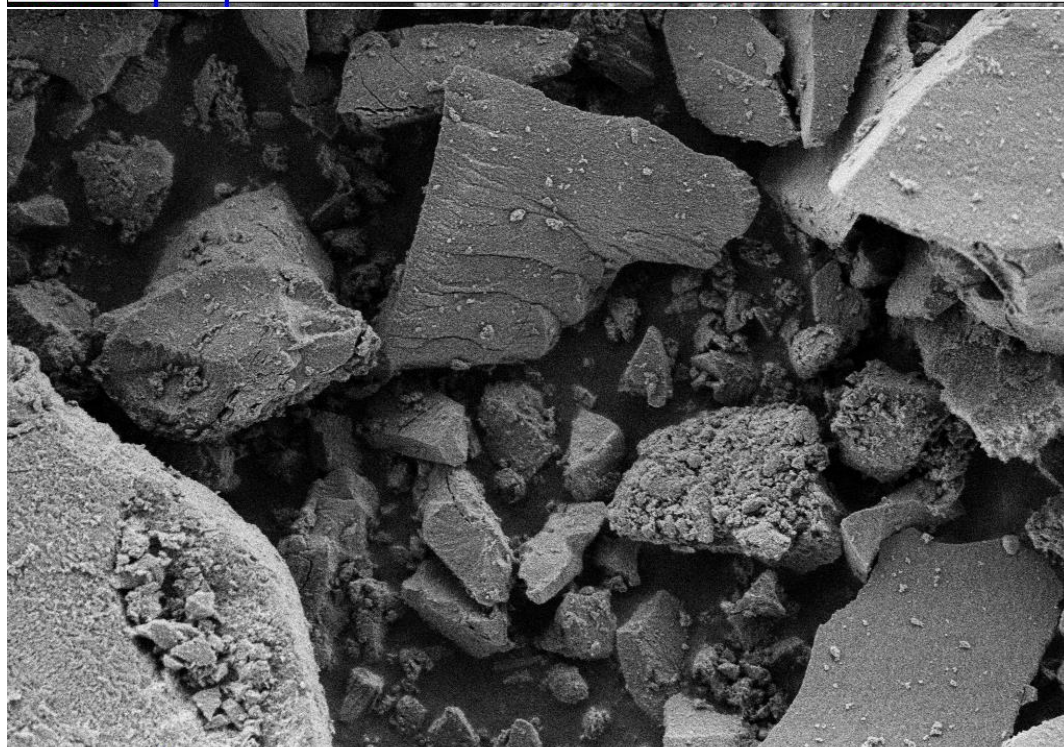








Mag = 20.00 K X 1 μ m EHT = 2.00 kV Stage at Z = 38.426 mm Stage at T = 0.0° Signal A = SE2 Mixing = Off FIB Blanked = Yes
 FIB Lock Mags = No WD = 4.1 mm Stage at M = 4.693 mm Tilt Corr. = Off Signal B = SE2 Mix Signal = 0.5000 FIB Probe = 30kV:500 pA
 FIB Mag = 704 X Image Pixel Size = 14.70 nm Tilt Angle = 0.0° Scan Rotation = 0.0° Aperture No. = 1 FIB Imaging = SEM



Mag = 5.00 K X 2 μ m EHT = 2.00 kV Stage at Z = 38.426 mm Stage at T = 0.0° Signal A = SE2 Mixing = Off FIB Blanked = Yes
 FIB Lock Mags = No WD = 4.1 mm Stage at M = 4.693 mm Tilt Corr. = Off Signal B = SE2 Mix Signal = 0.5000 FIB Probe = 30kV:500 pA
 FIB Mag = 704 X Image Pixel Size = 58.79 nm Tilt Angle = 0.0° Scan Rotation = 0.0° Aperture No. = 1 FIB Imaging = SEM

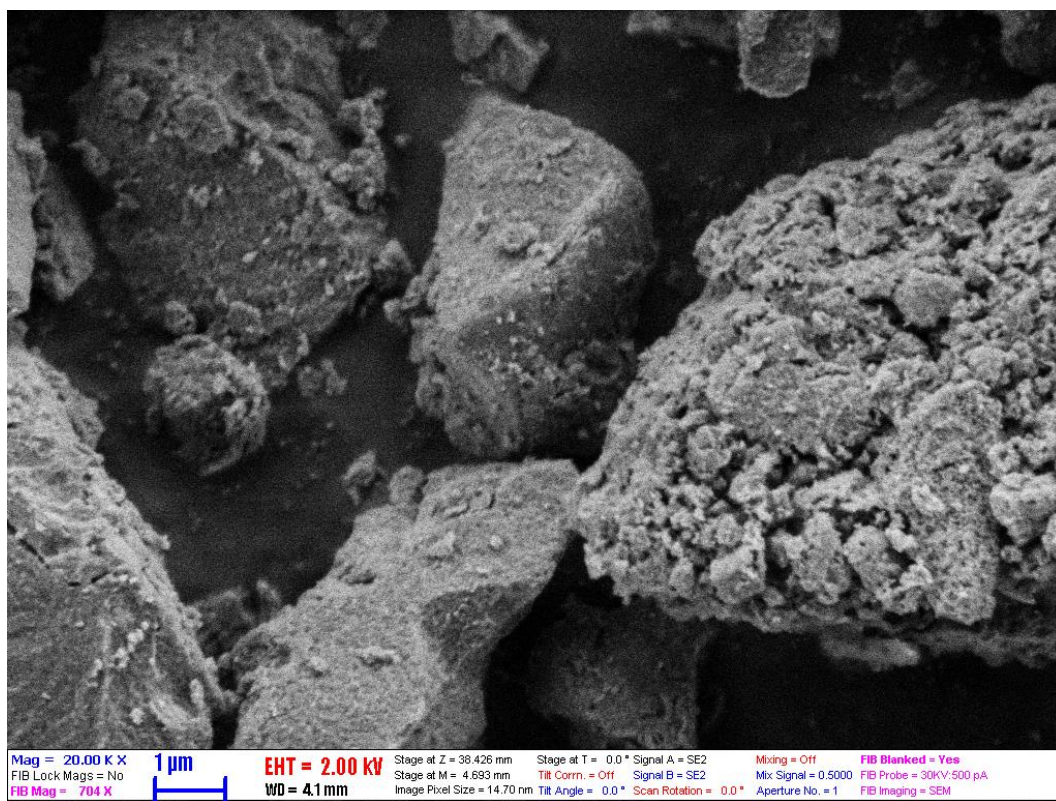
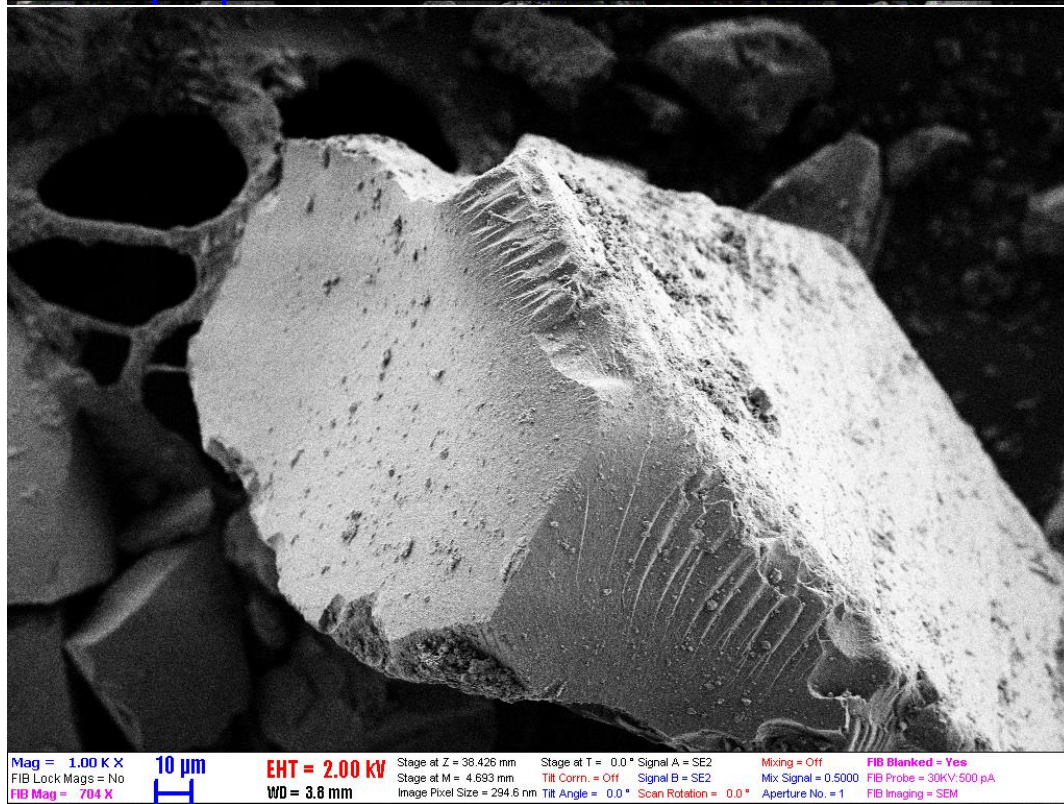
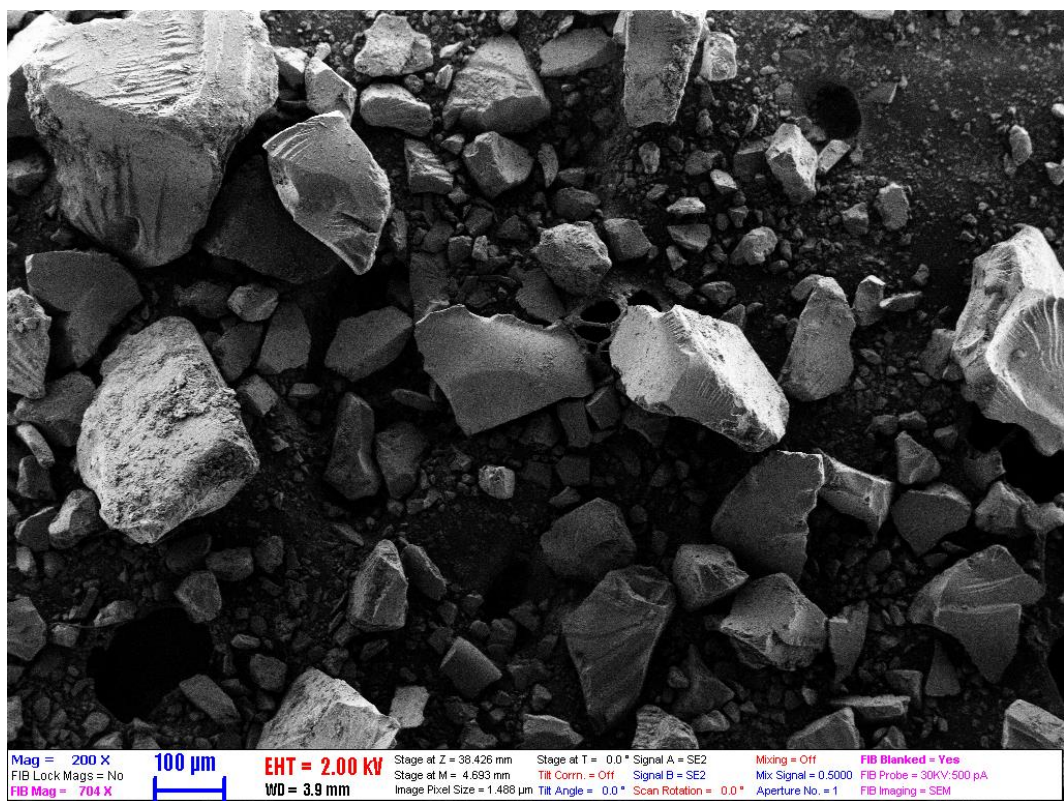
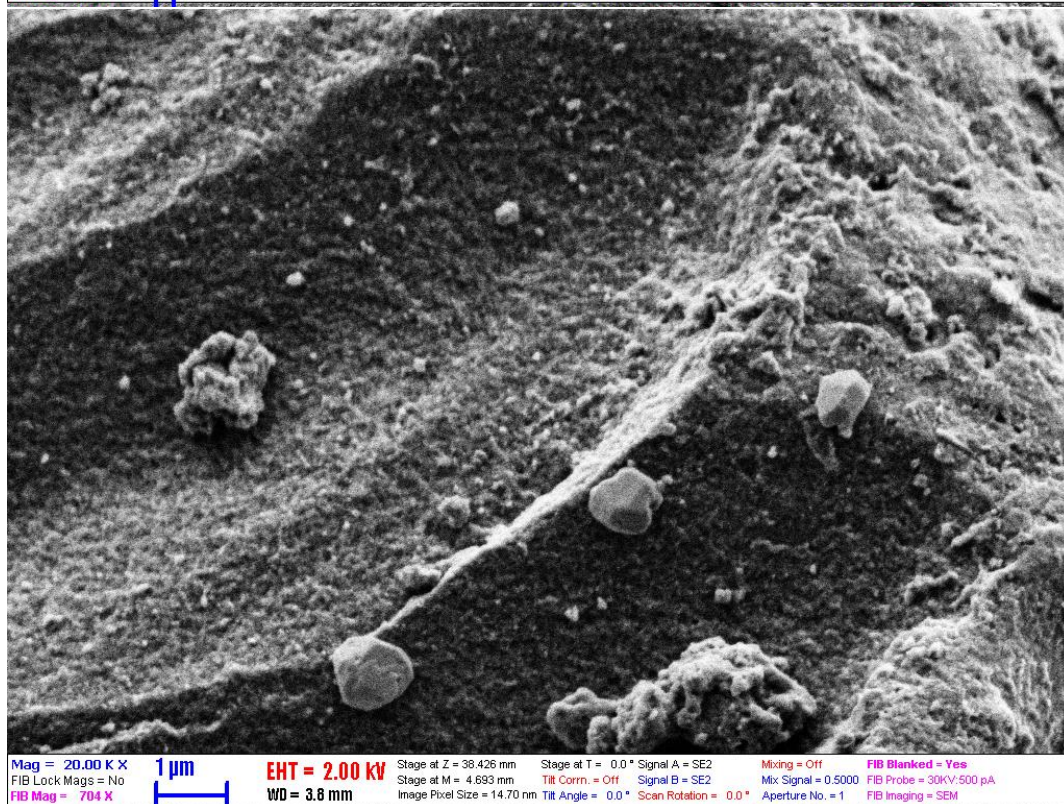
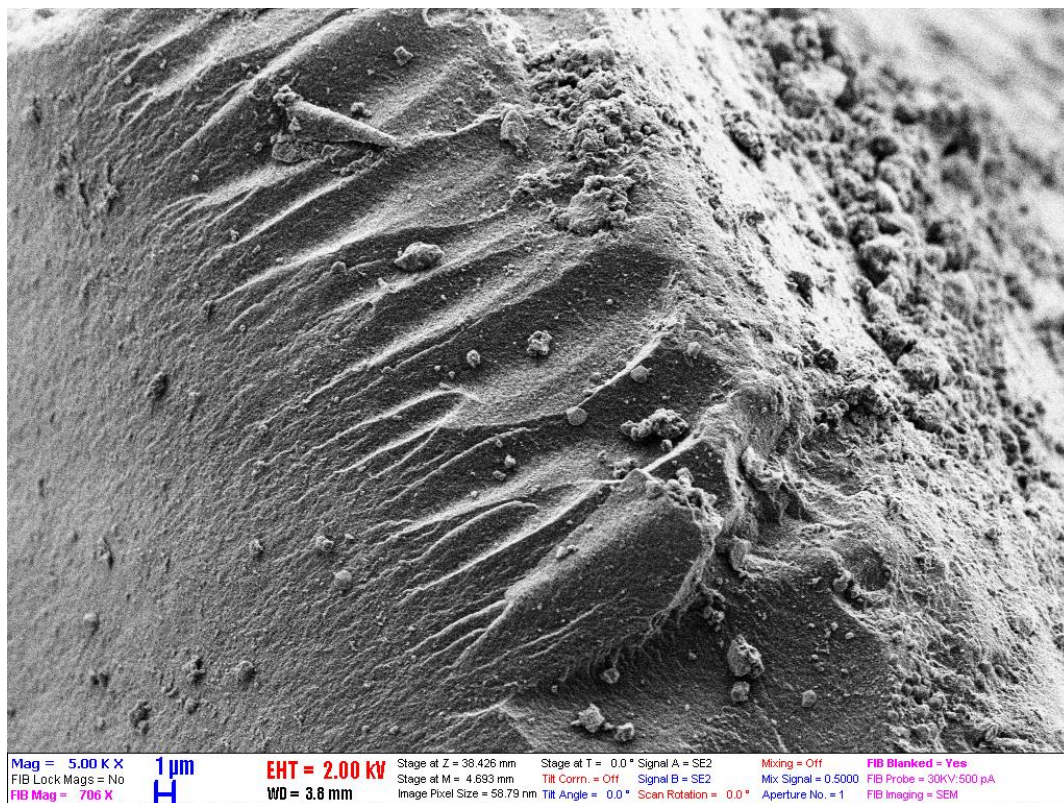
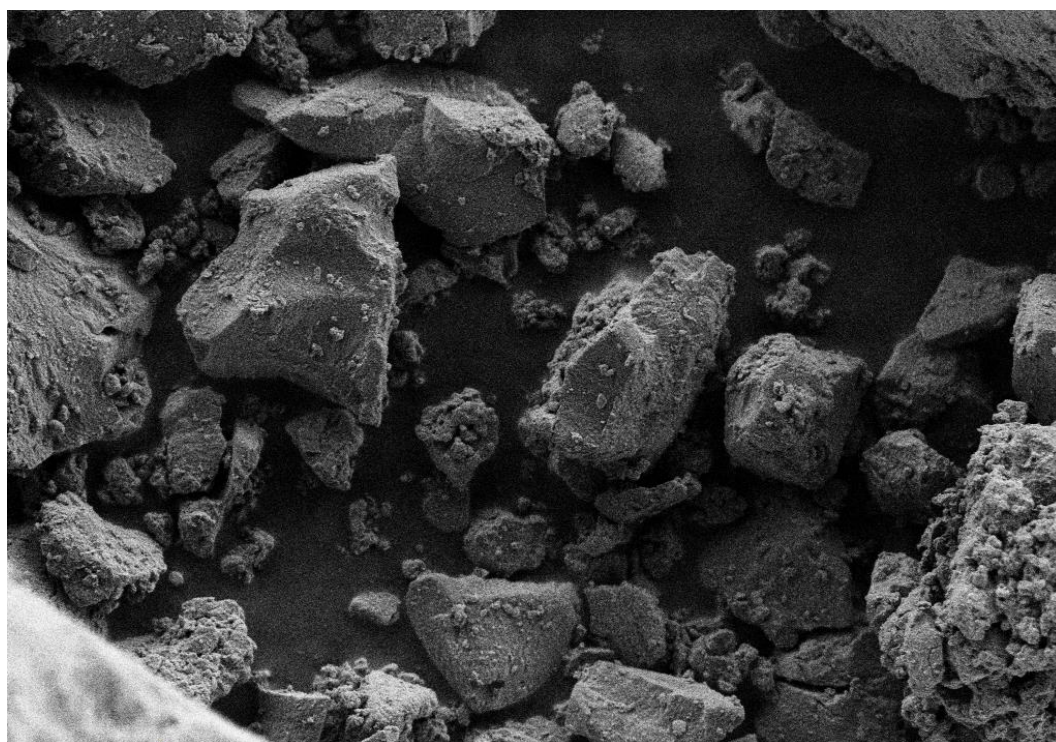


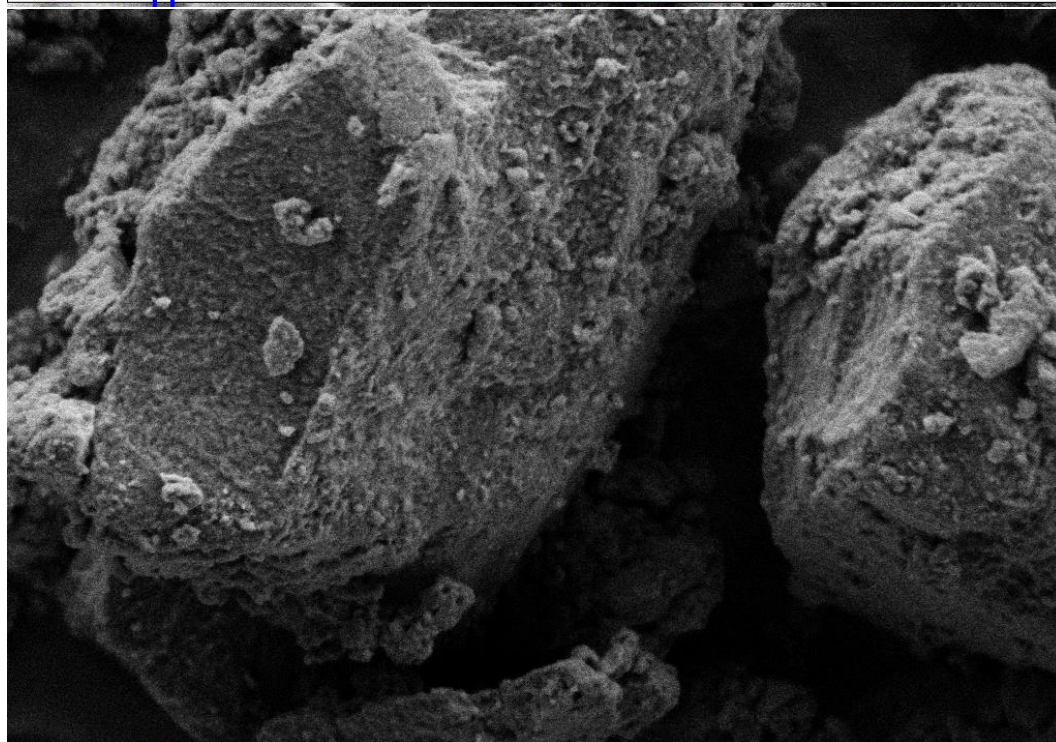
Figure S3 IM-BF4-0.3



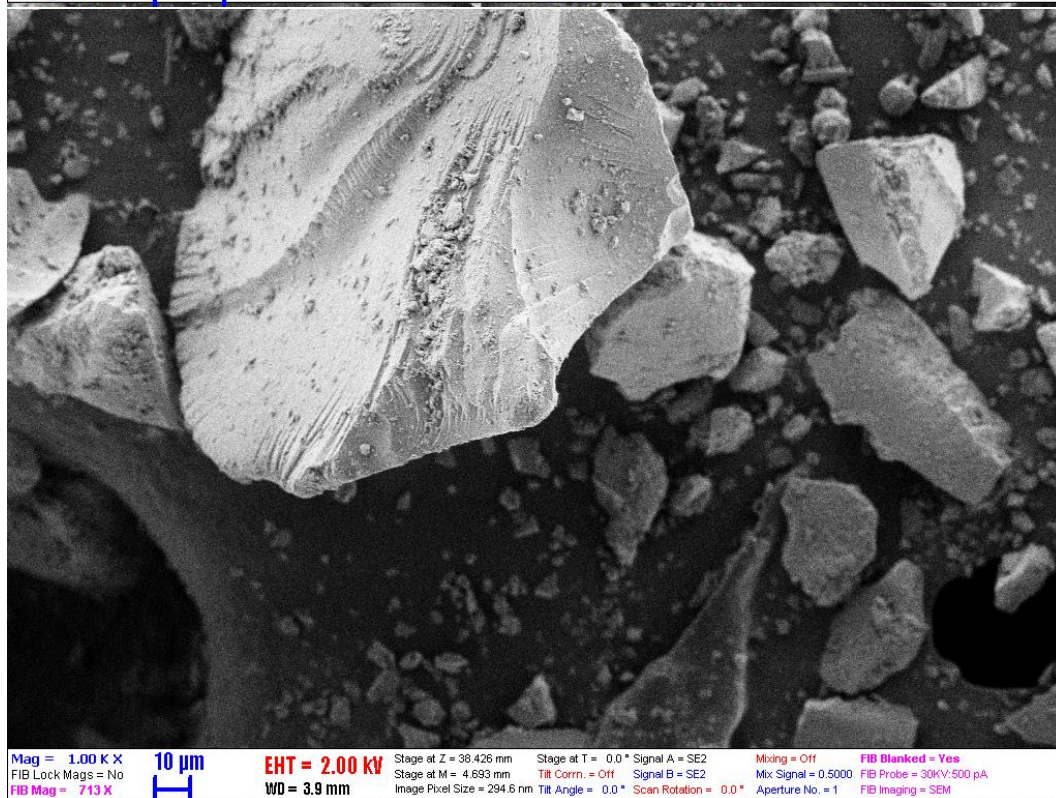
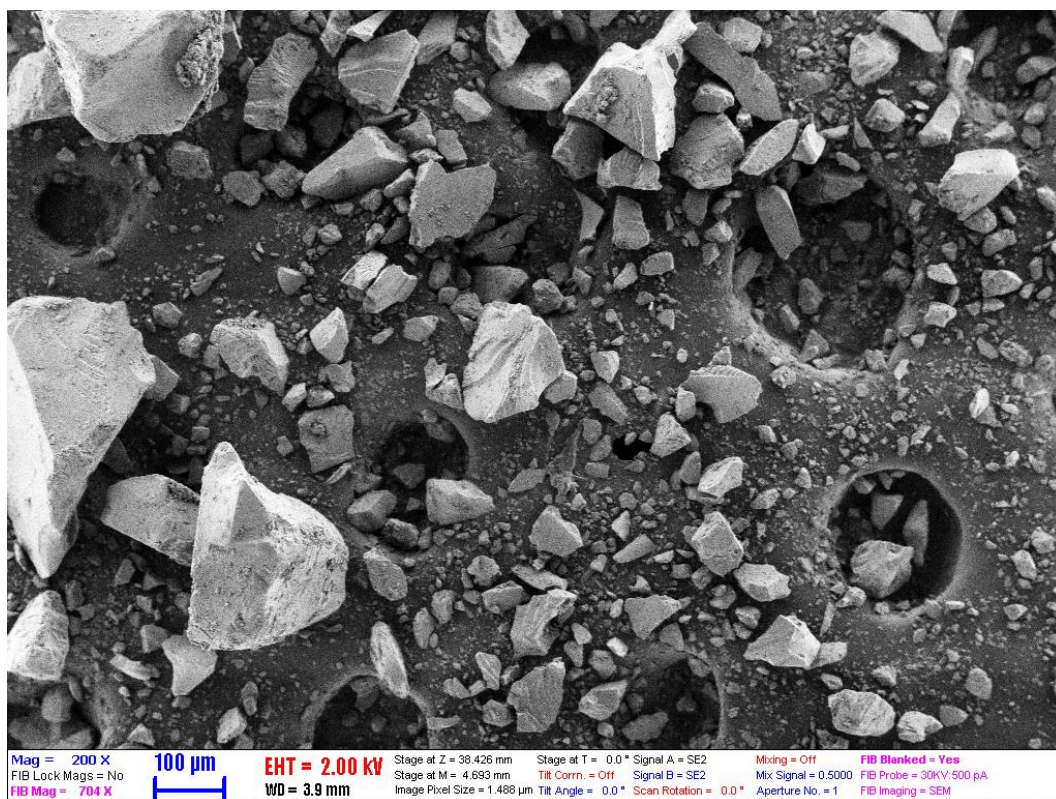


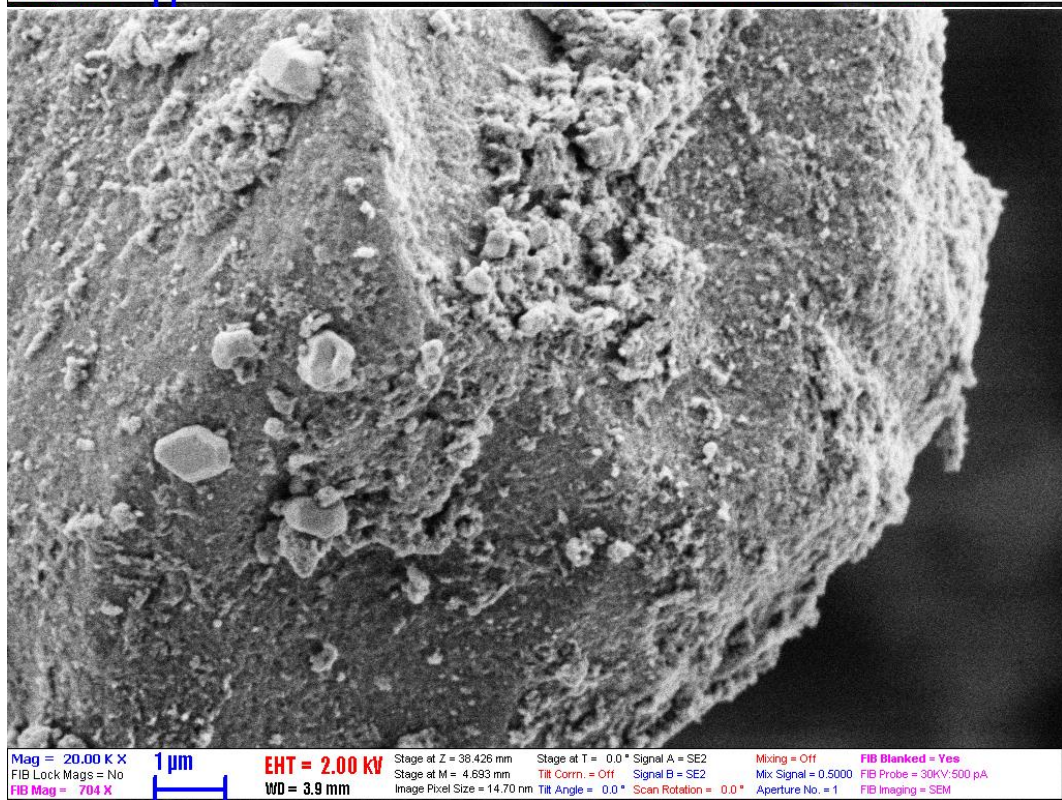
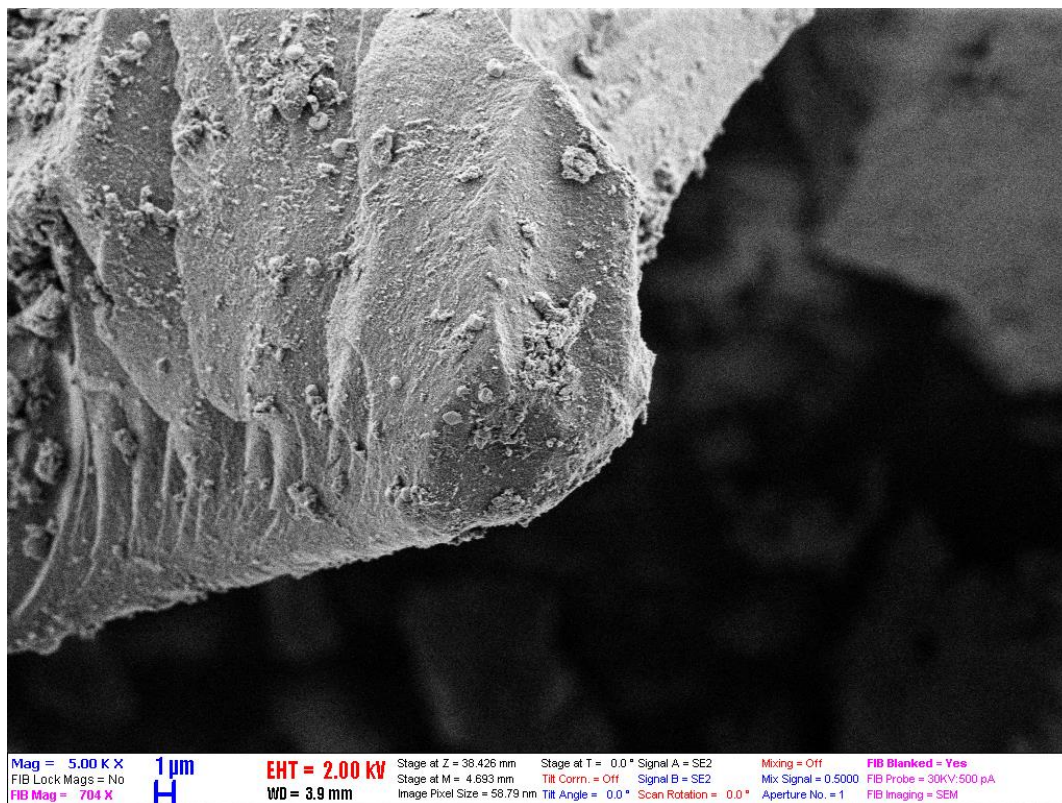


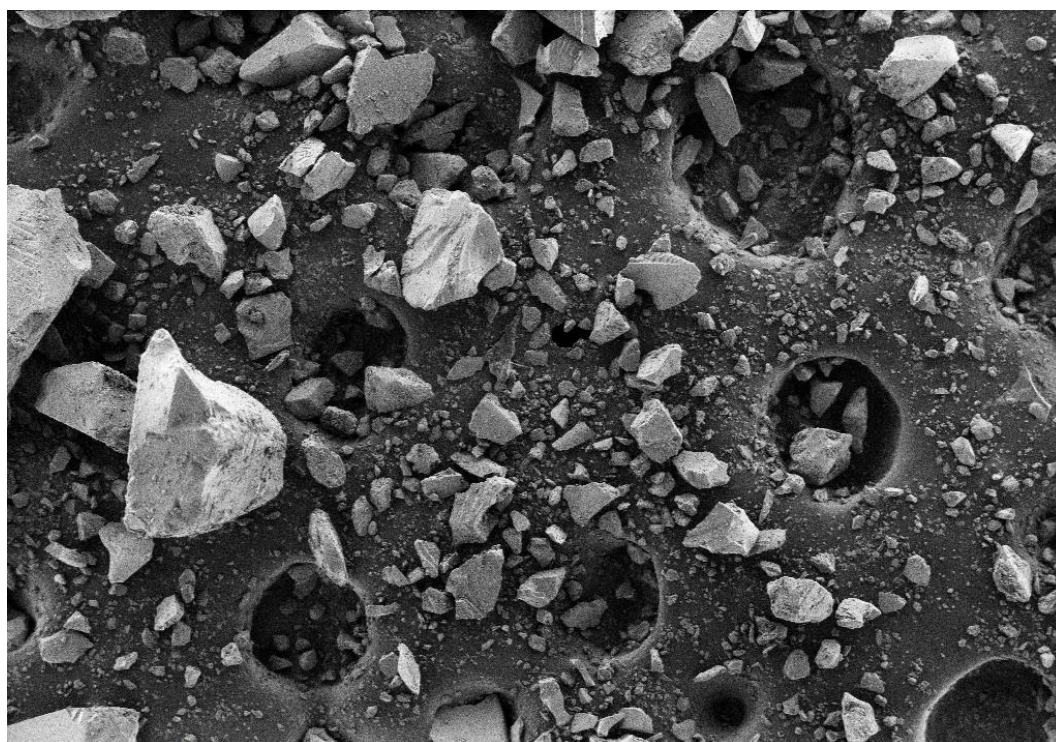
Mag = 5.00 K X 1 μ m
 FIB Lock Mags = No
 FIB Mag = 704 X
 EHT = 2.00 kV
 WD = 4.0 mm
 Stage at Z = 38.426 mm
 Stage at M = 4.693 mm
 Image Pixel Size = 58.79 nm
 Stage at T = 0.0 °
 Signal A = SE2
 Tilt Corr. = Off
 Signal B = SE2
 Tilt Angle = 0.0 °
 Scan Rotation = 0.0 °
 Mixing = Off
 Mix Signal = 0.5000
 Aperture No. = 1
 FIB Blanked = Yes
 FIB Probe = 30KV-500 pA
 FIB Imaging = SEM



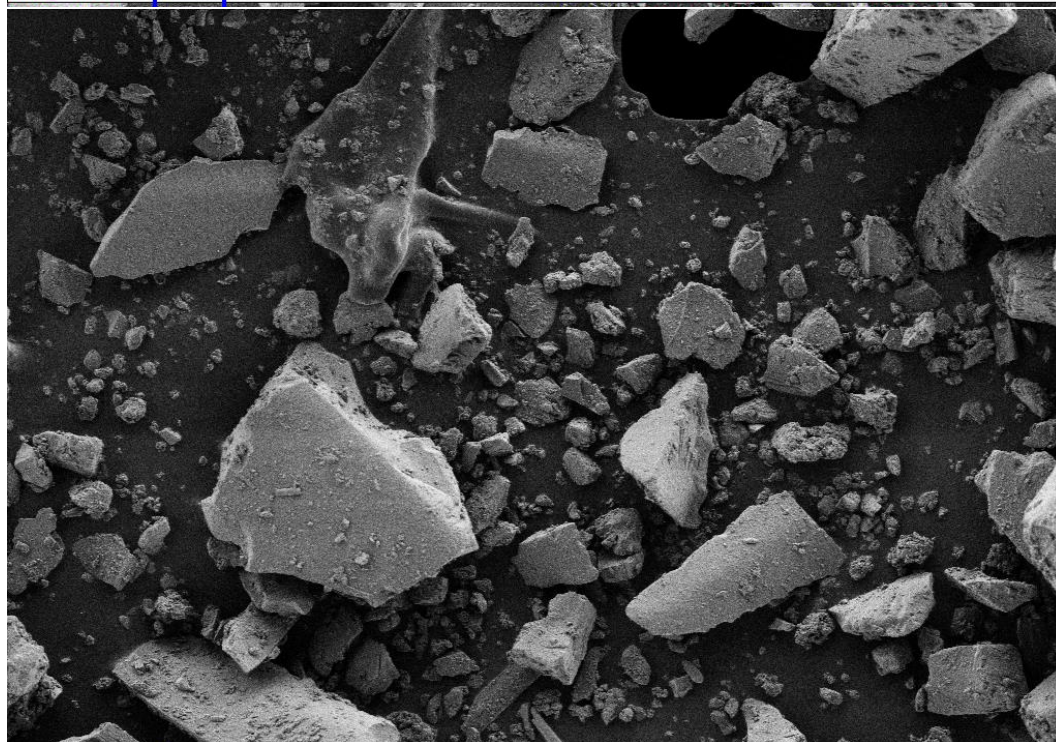
Mag = 20.00 K X 1 μ m
 FIB Lock Mags = No
 FIB Mag = 704 X
 EHT = 2.00 kV
 WD = 4.0 mm
 Stage at Z = 38.426 mm
 Stage at M = 4.693 mm
 Image Pixel Size = 14.70 nm
 Stage at T = 0.0 °
 Signal A = SE2
 Tilt Corr. = Off
 Signal B = SE2
 Tilt Angle = 0.0 °
 Scan Rotation = 0.0 °
 Mixing = Off
 Mix Signal = 0.5000
 Aperture No. = 1
 FIB Blanked = Yes
 FIB Probe = 30KV-500 pA
 FIB Imaging = SEM







Mag = 200 X
 FIB Lock Mags = No
 FIB Mag = 704 X
 EHT = 2.00 kV
 WD = 4.0 mm
 Stage at Z = 38.426 mm
 Stage at M = 4.693 mm
 Image Pixel Size = 1.488 μm
 Stage at T = 0.0 °
 Signal A = SE2
 Tilt Corr. = Off
 Signal B = SE2
 Tilt Angle = 0.0 °
 Scan Rotation = 0.0 °
 Mixing = Off
 Mix Signal = 0.5000
 Aperture No. = 1
 FIB Blanked = Yes
 FIB Probe = 30KV-500 pA
 FIB Imaging = SEM



Mag = 1.00 K X
 FIB Lock Mags = No
 FIB Mag = 704 X
 EHT = 2.00 kV
 WD = 4.0 mm
 Stage at Z = 38.426 mm
 Stage at M = 4.693 mm
 Image Pixel Size = 294.6 nm
 Stage at T = 0.0 °
 Signal A = SE2
 Tilt Corr. = Off
 Signal B = SE2
 Tilt Angle = 0.0 °
 Scan Rotation = 0.0 °
 Mixing = Off
 Mix Signal = 0.5000
 Aperture No. = 1
 FIB Blanked = Yes
 FIB Probe = 30KV-500 pA
 FIB Imaging = SEM

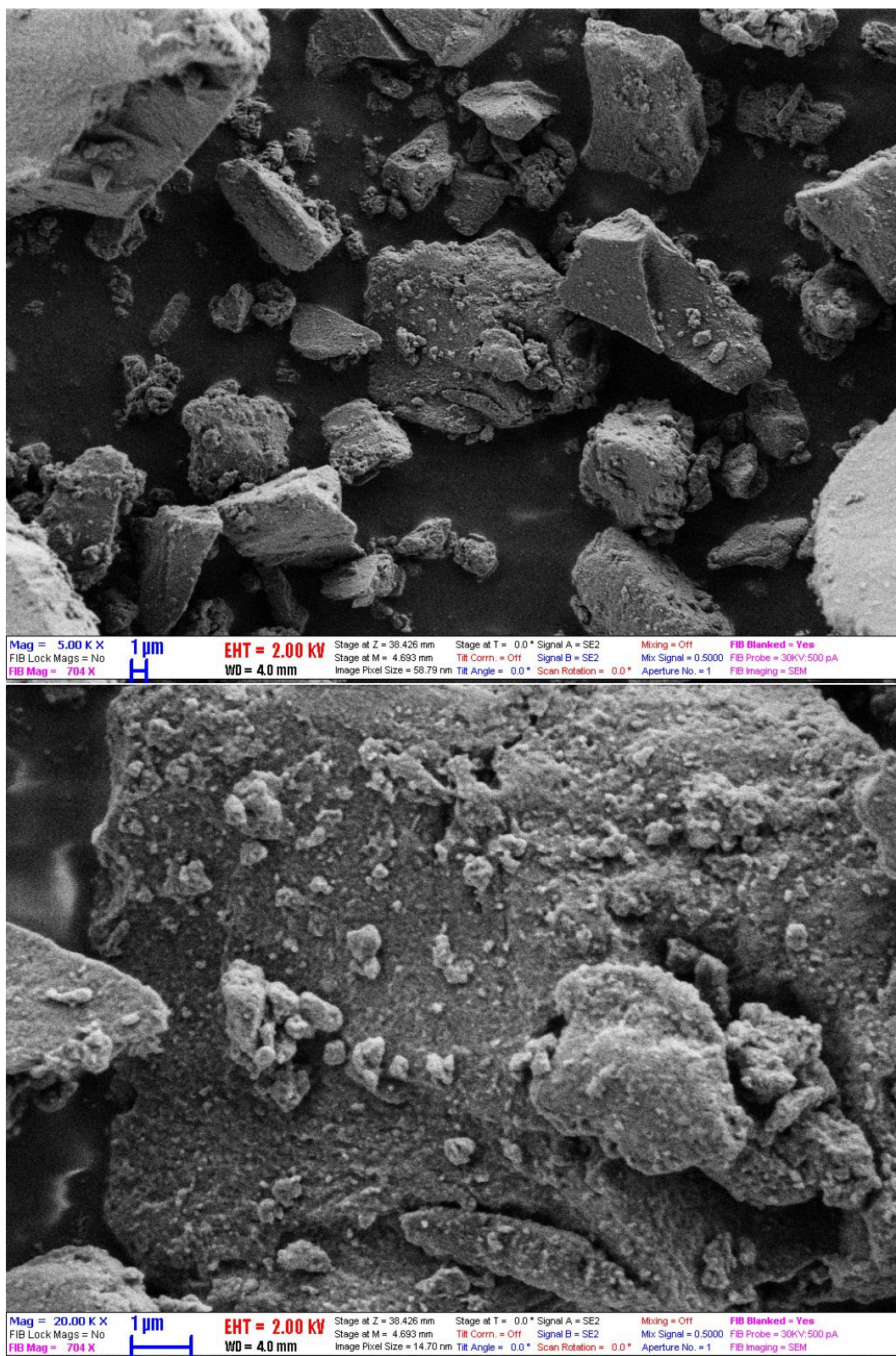
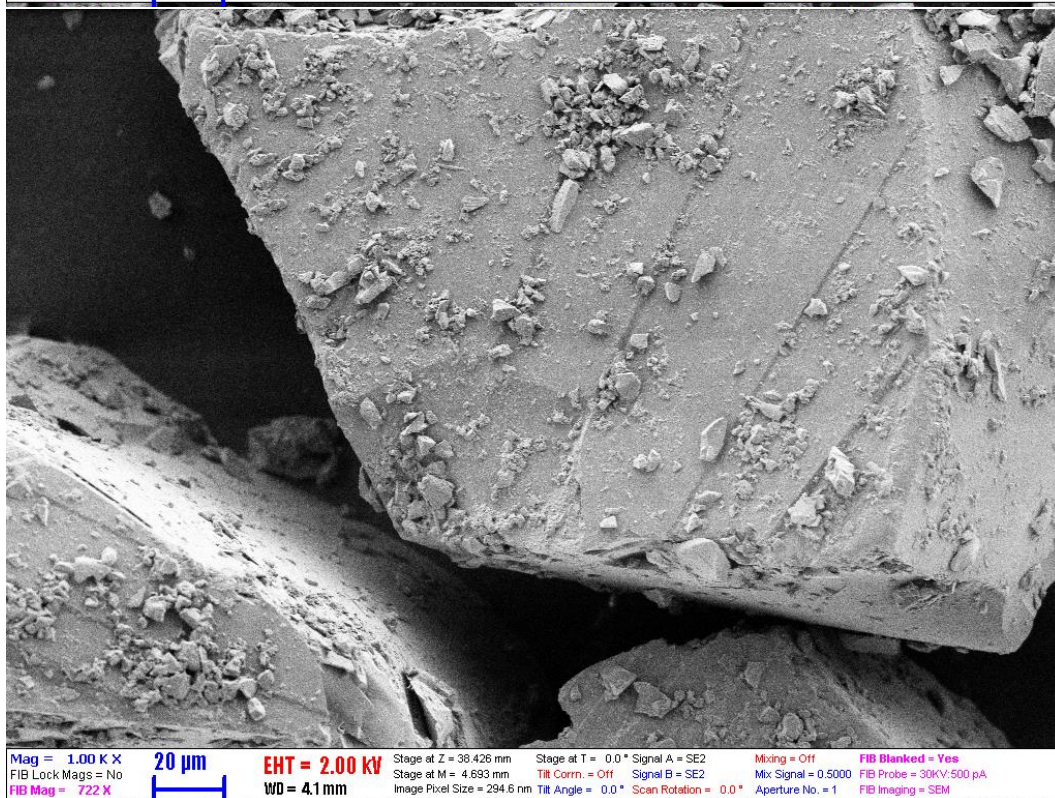
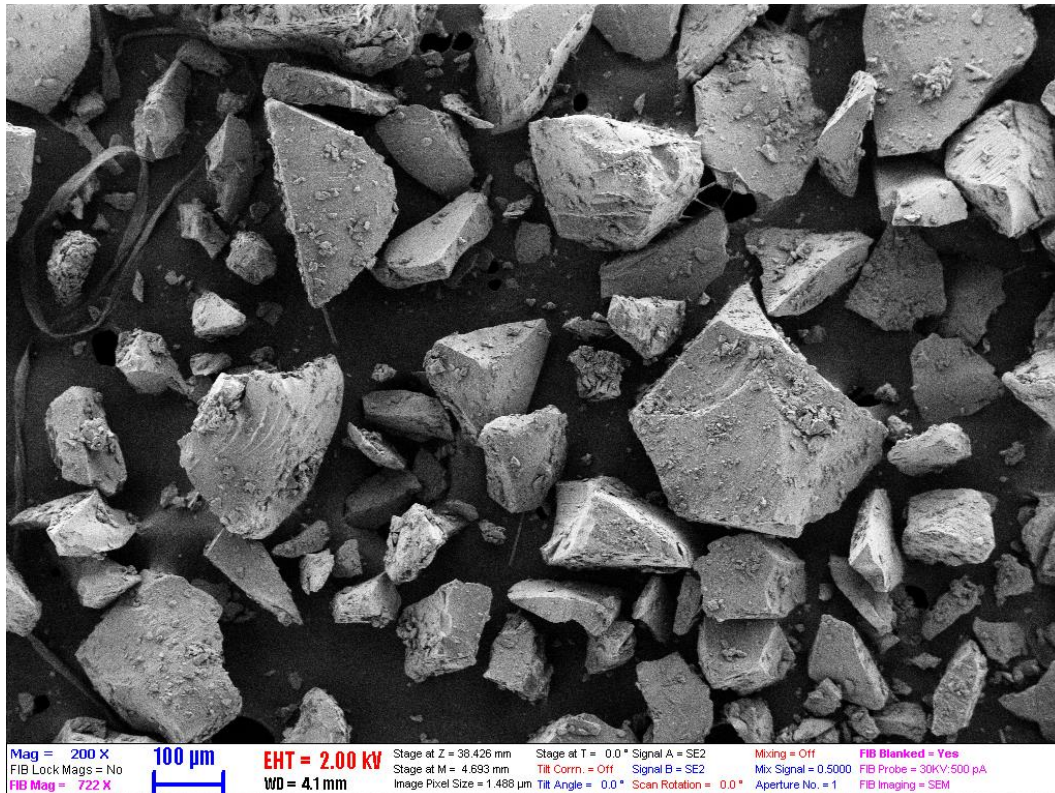
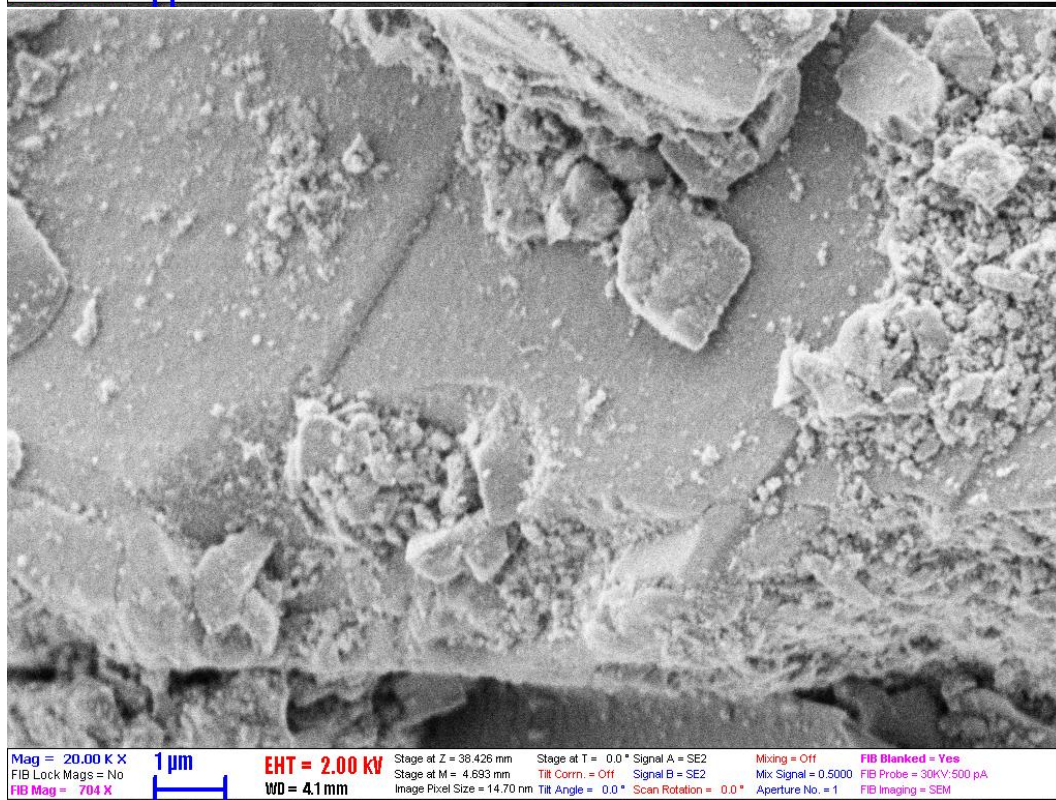
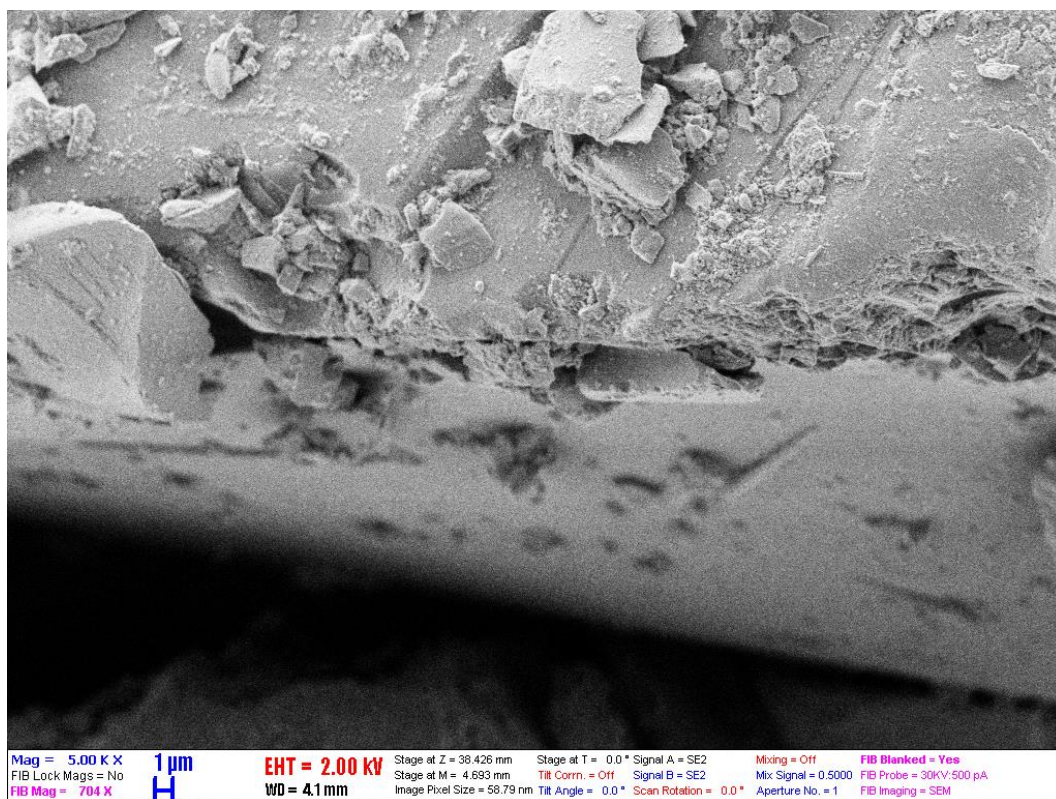
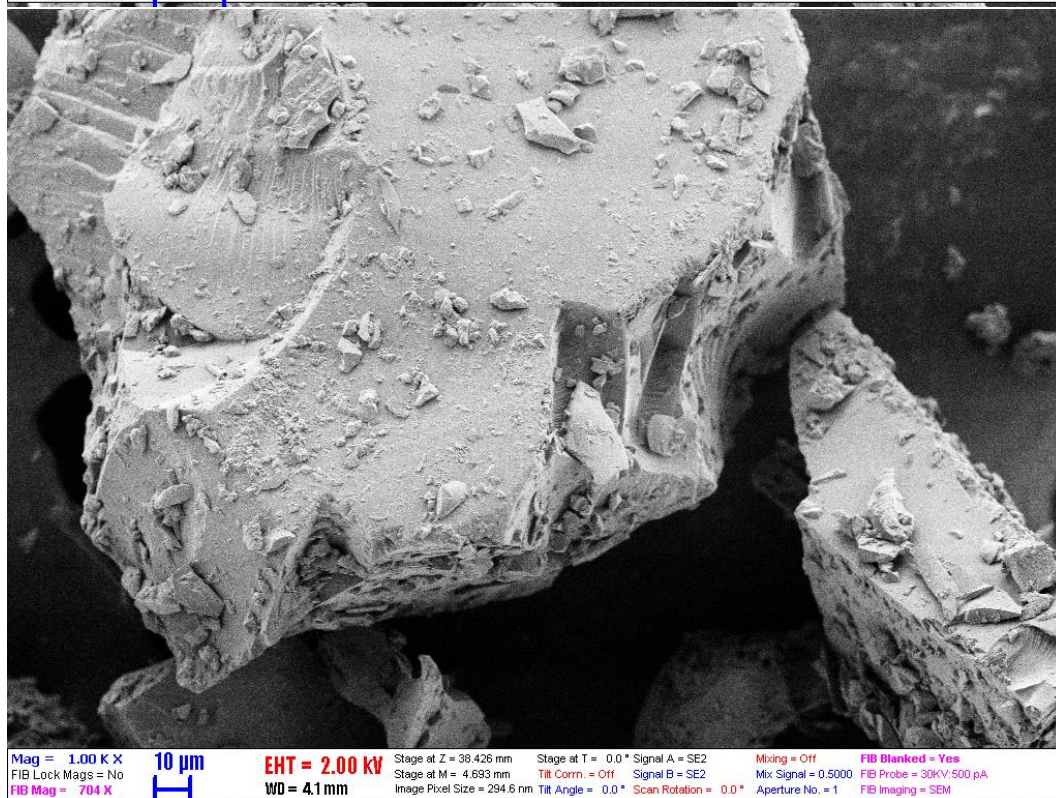
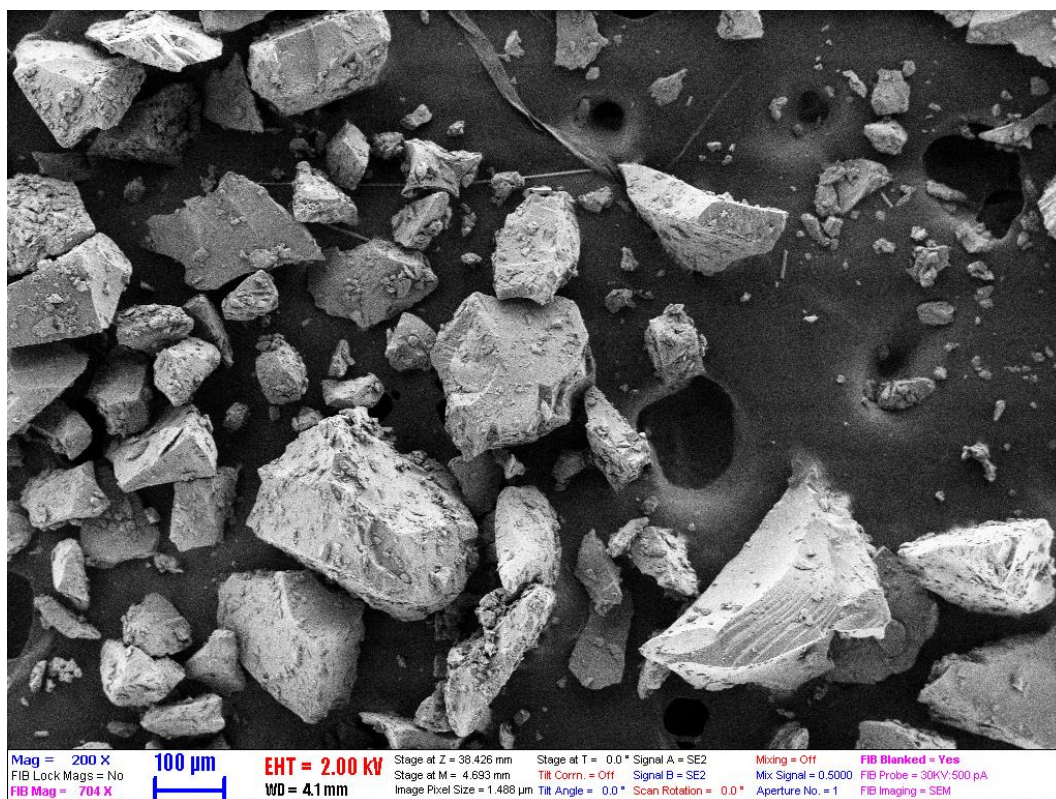
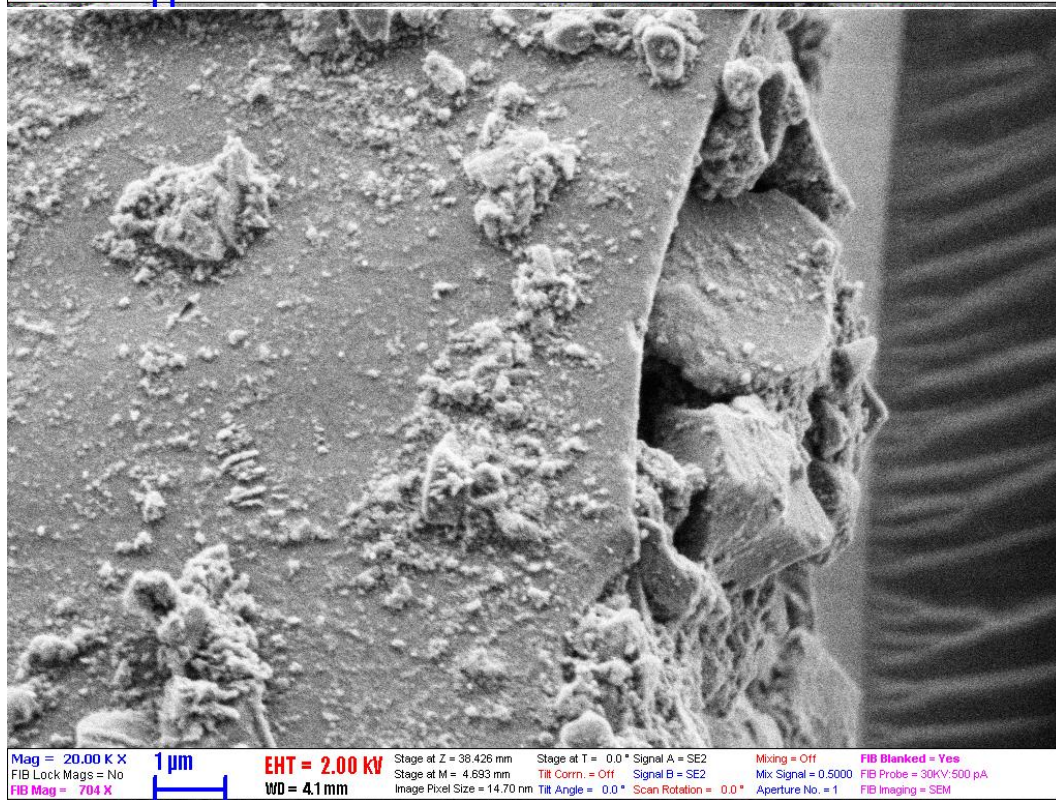
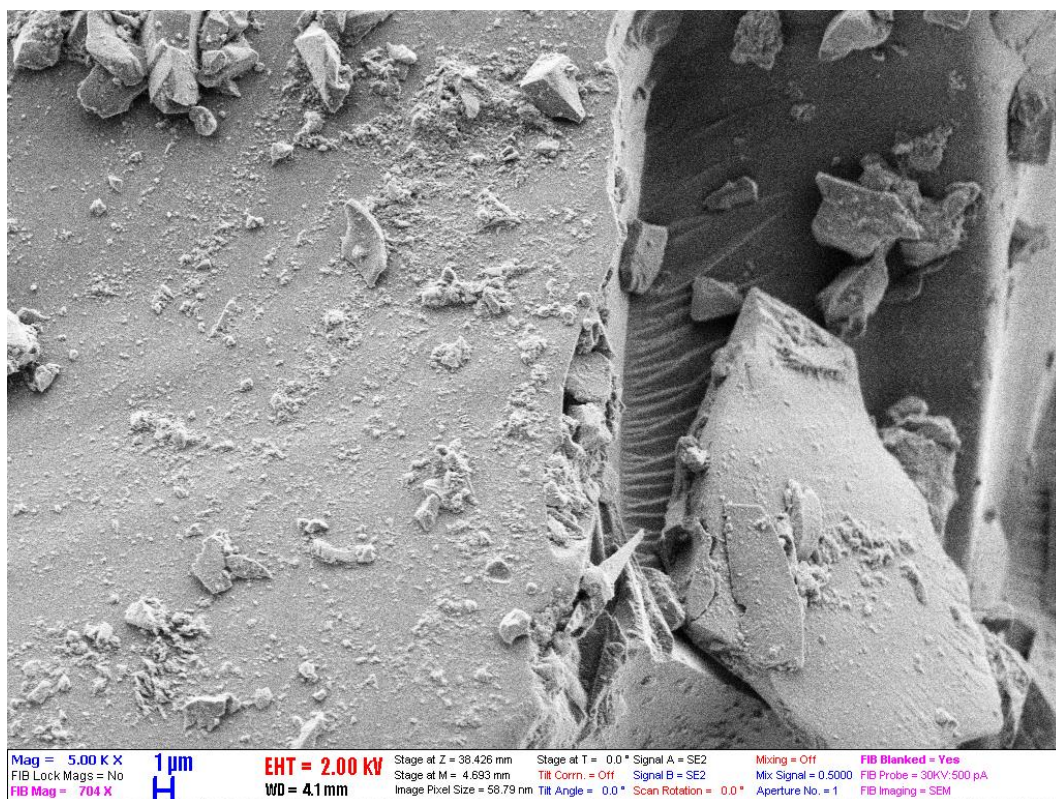


Figure S4 IM-BF4-0.5









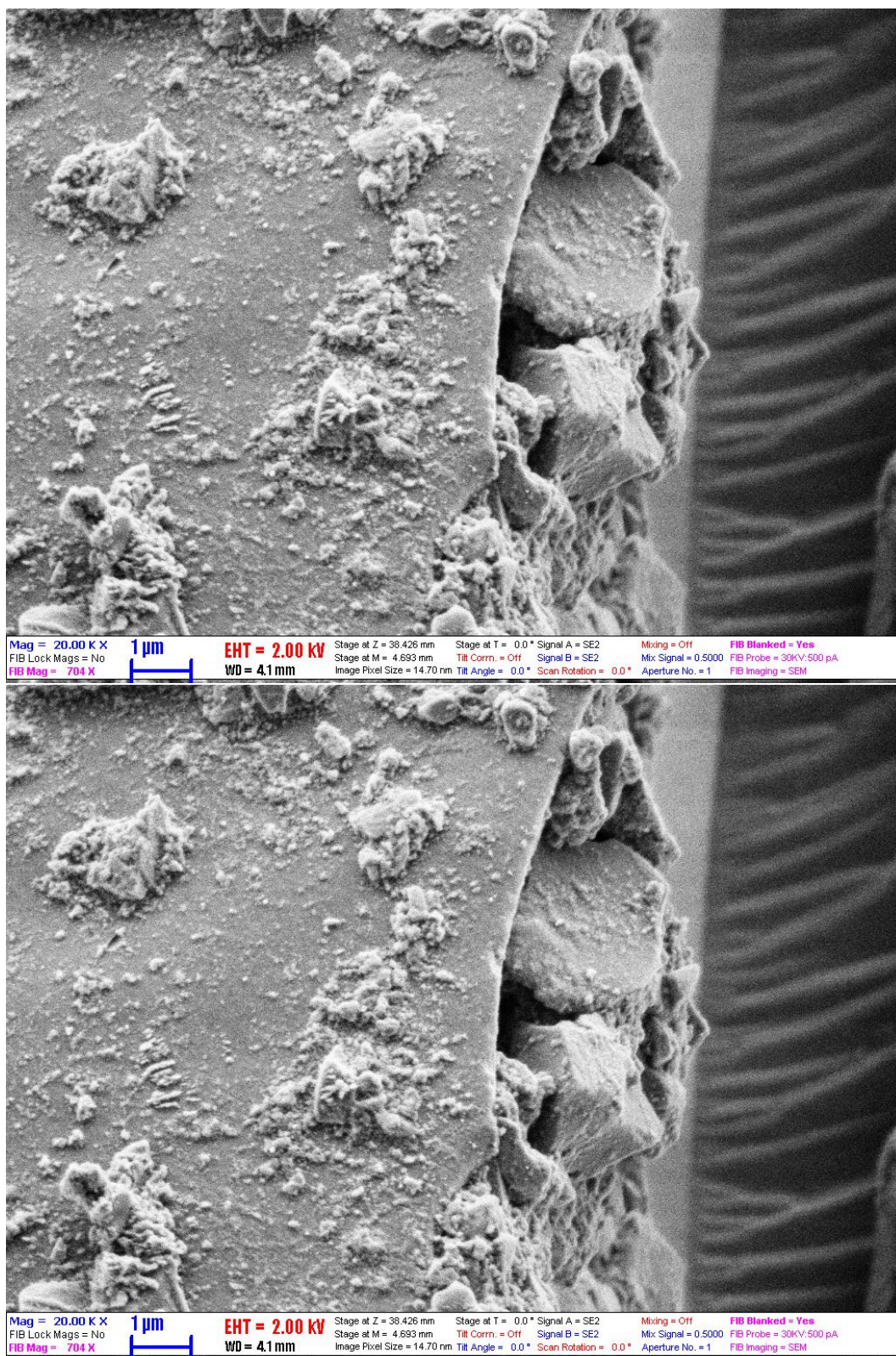
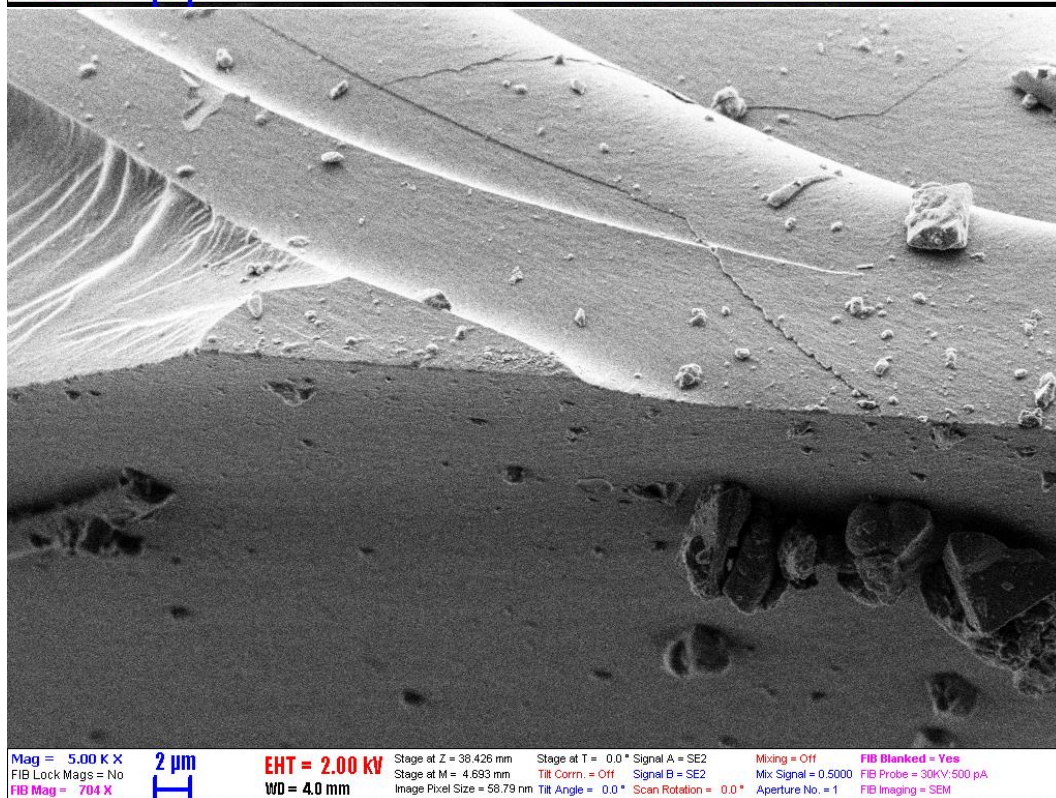
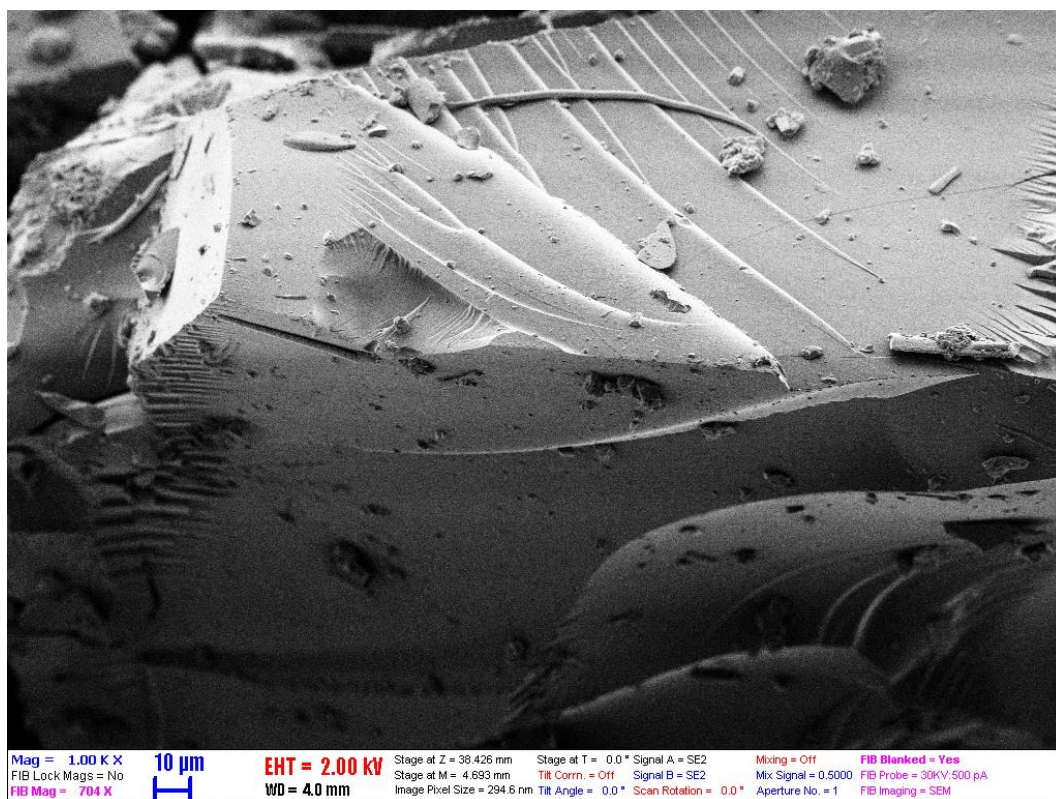
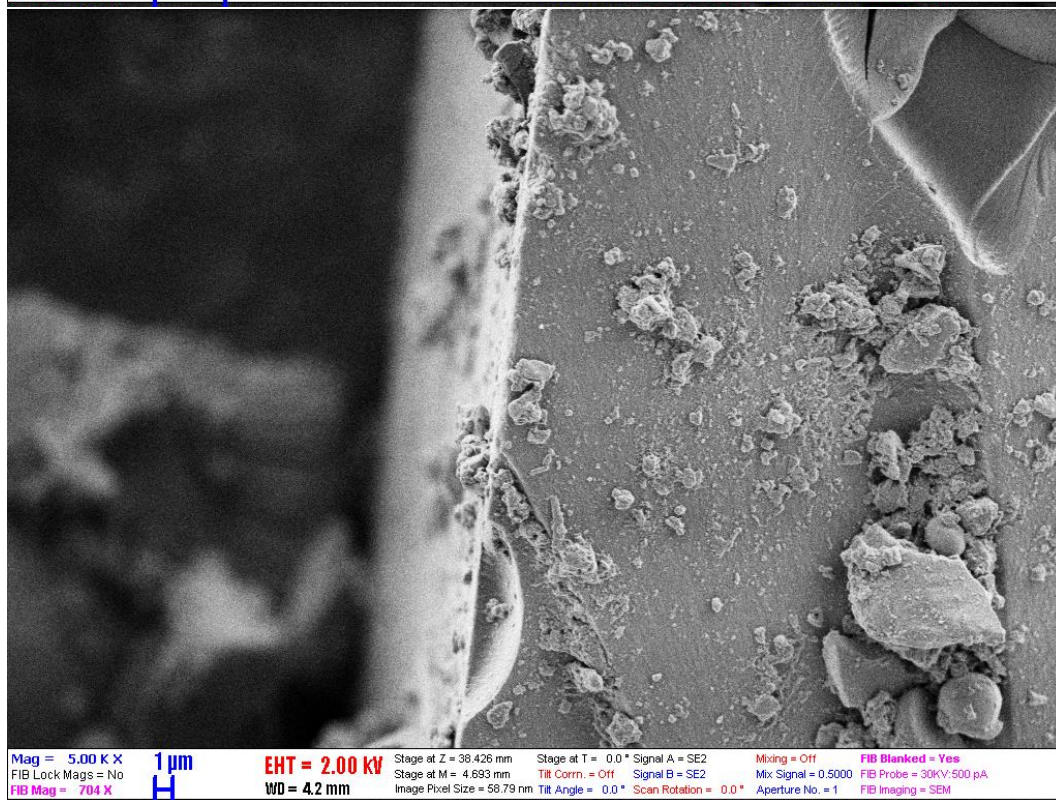
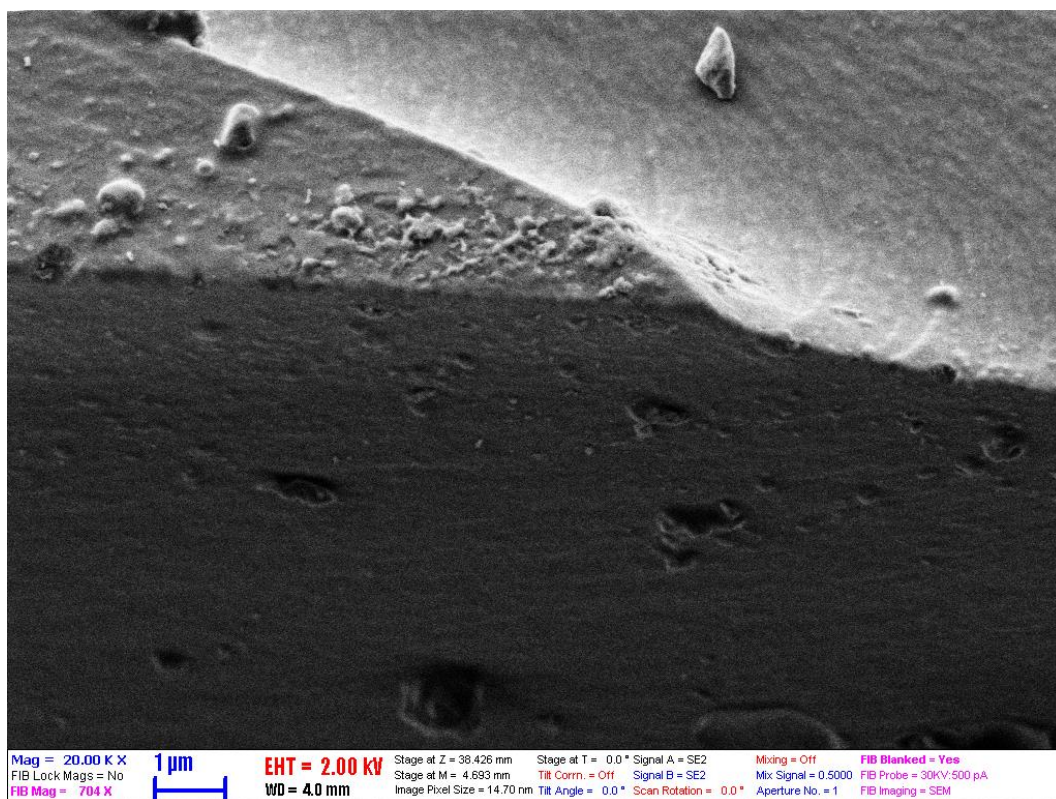


Figure S5 IM-CI-0.1





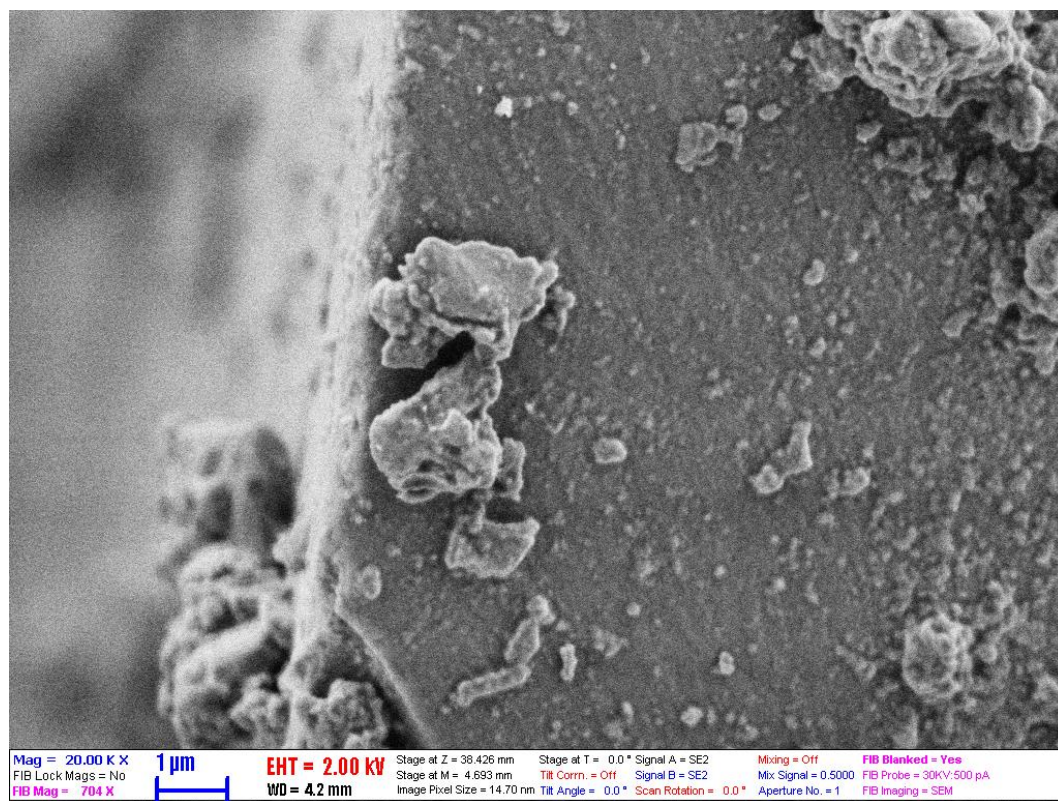
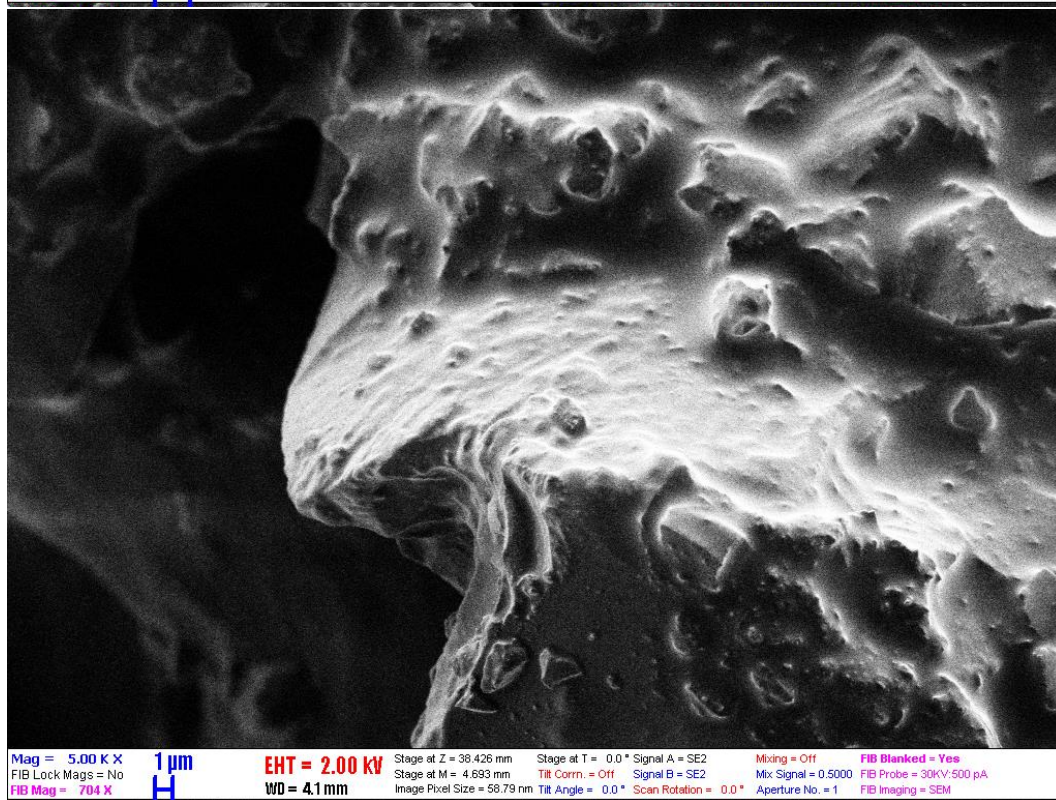
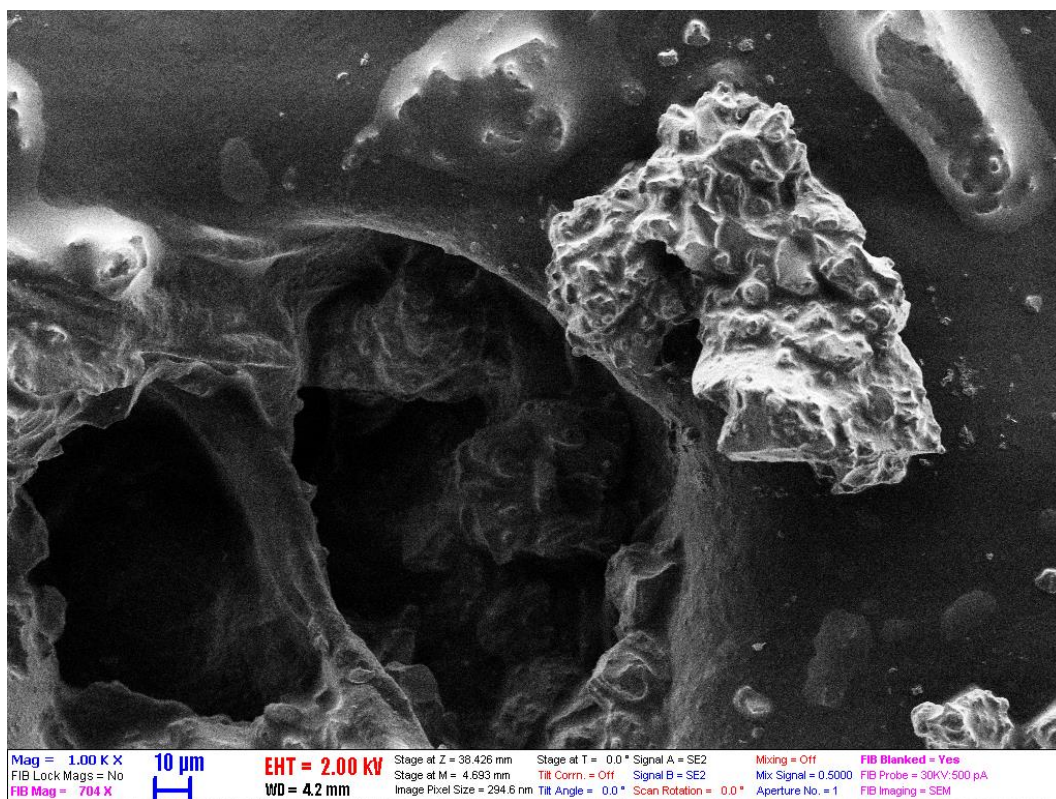
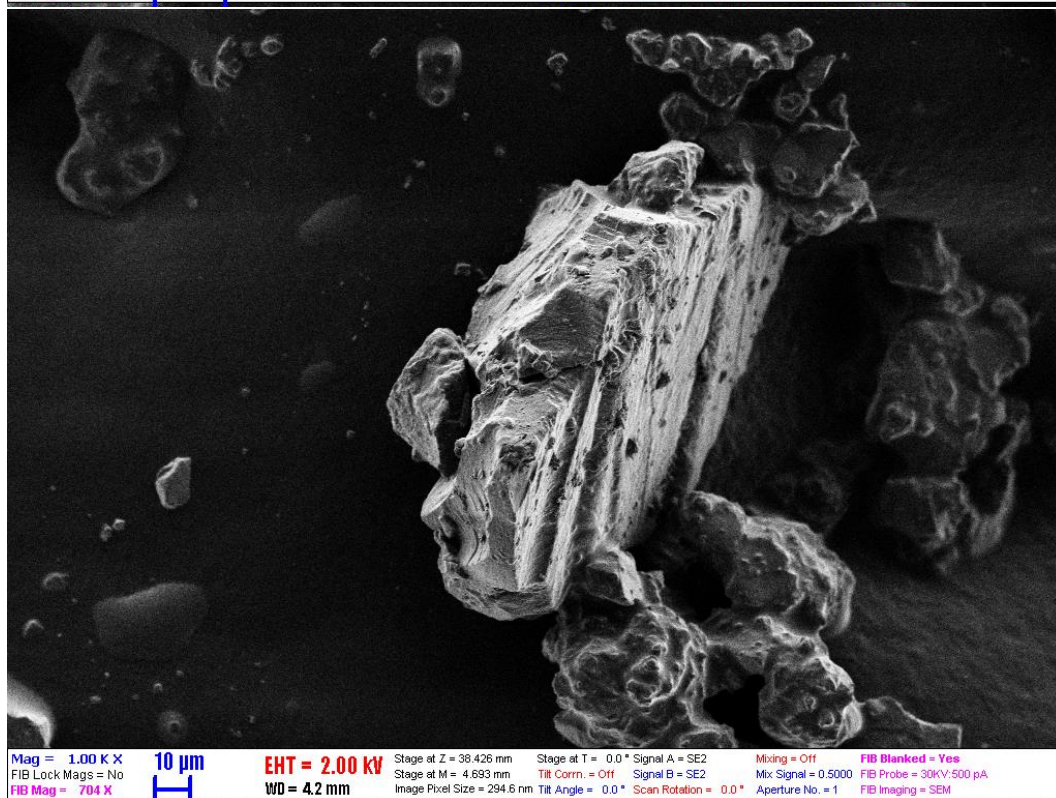
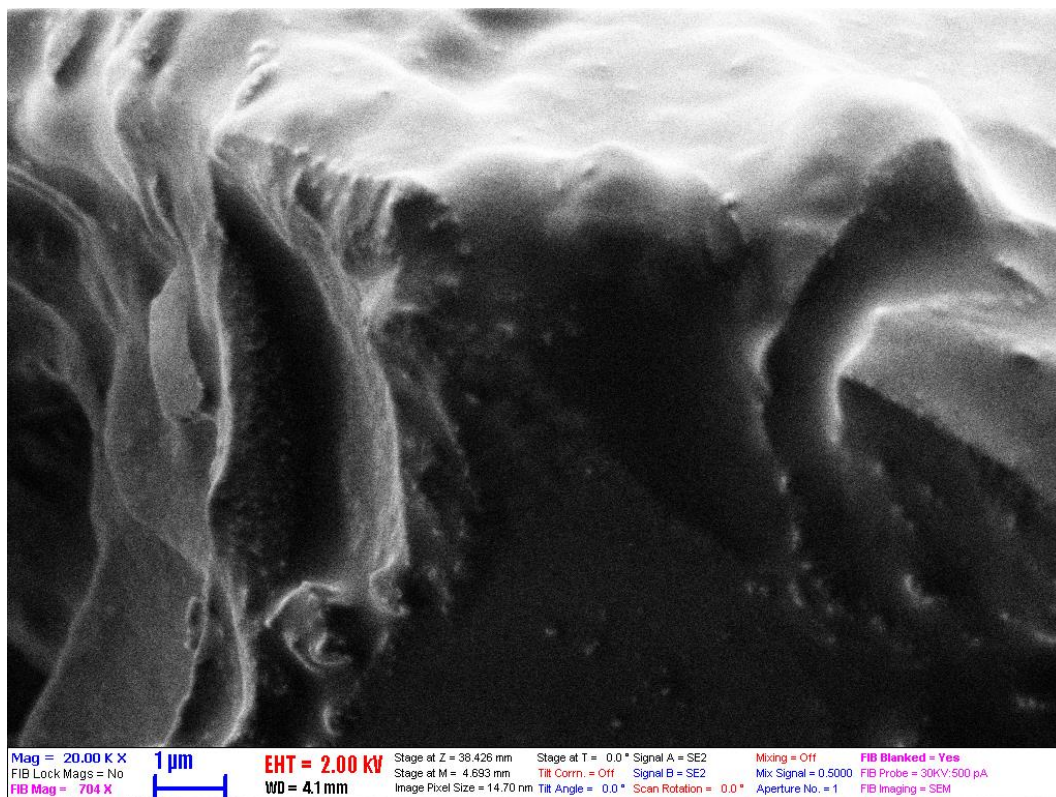
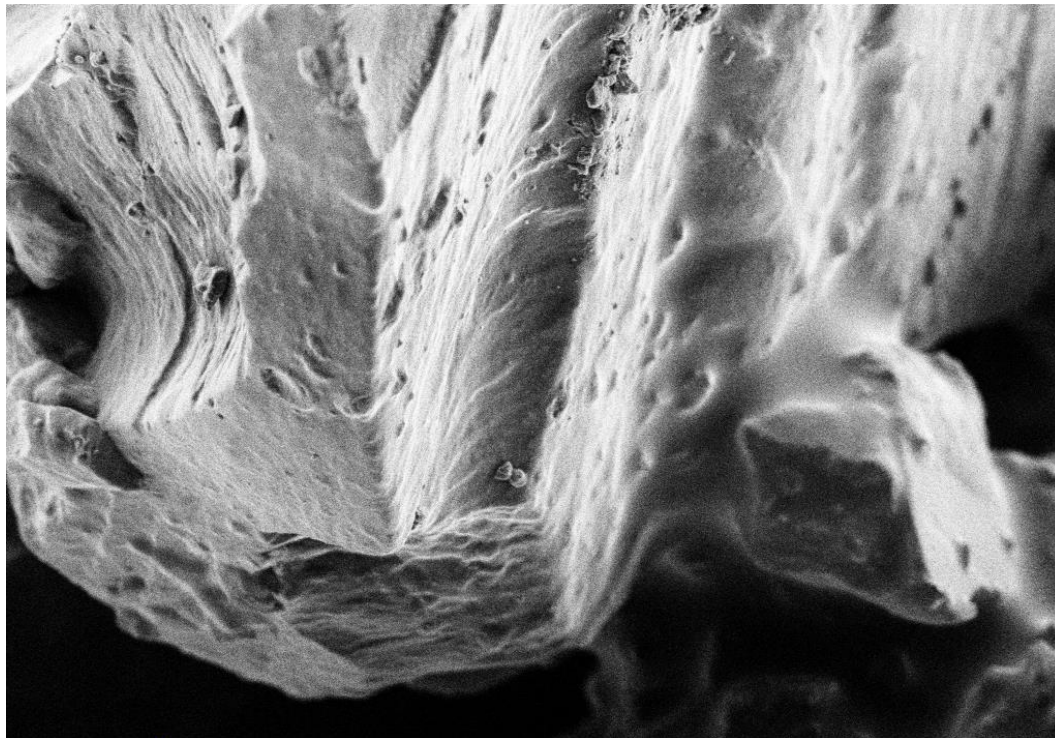


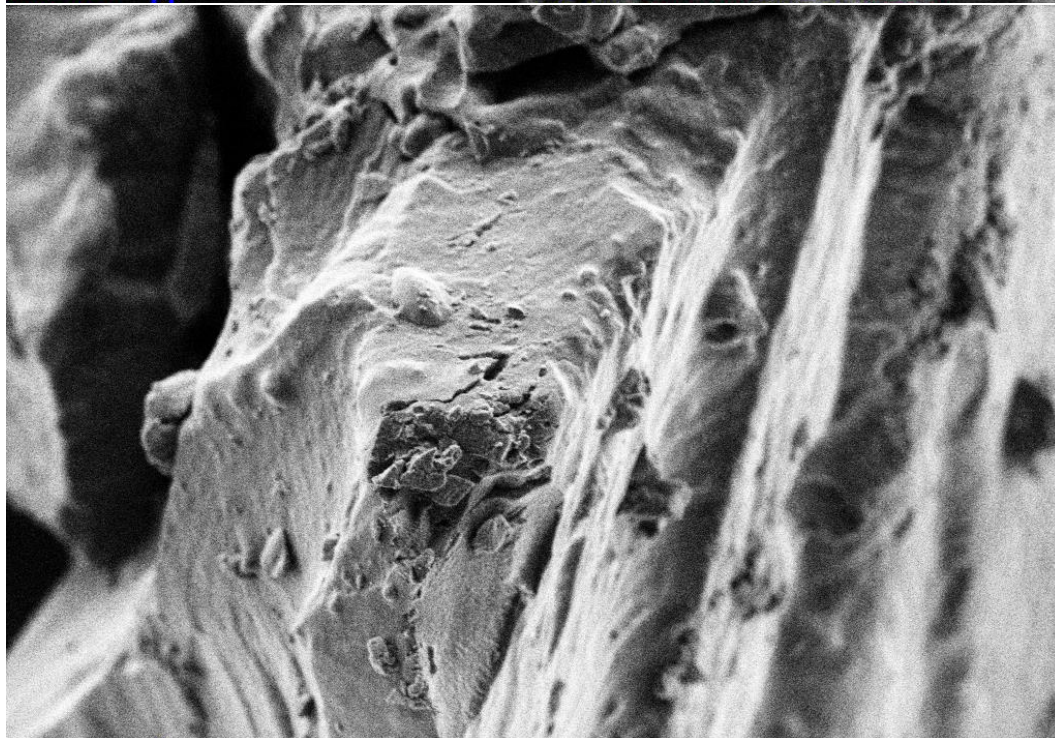
Figure S6 IM-CI-0.3



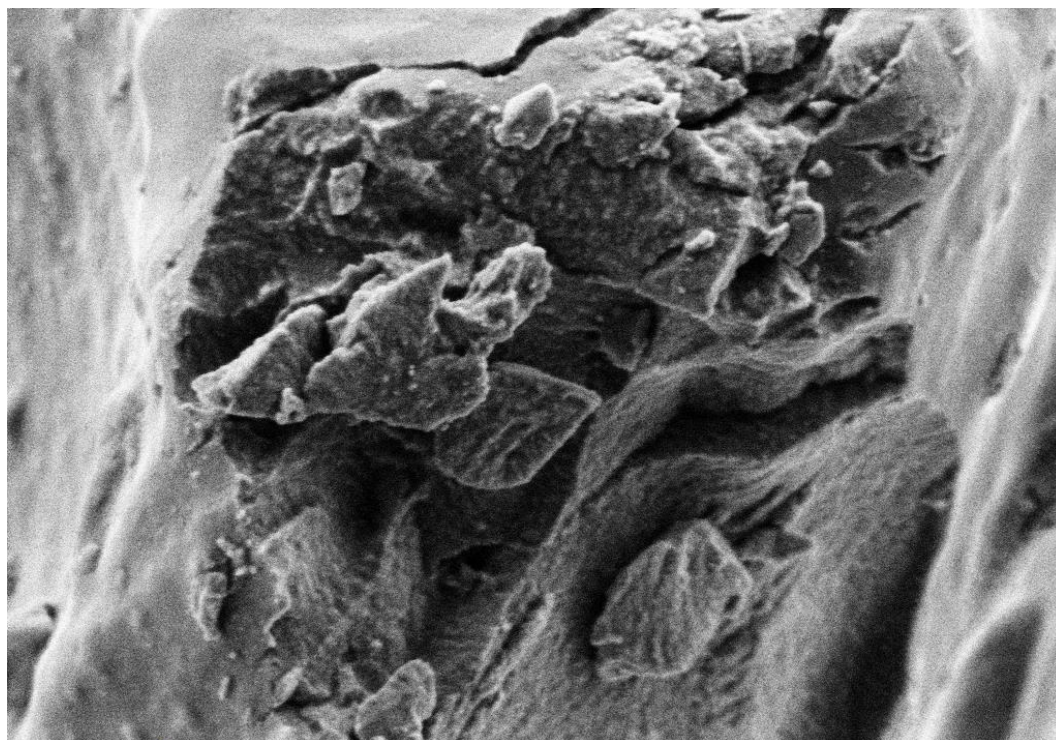




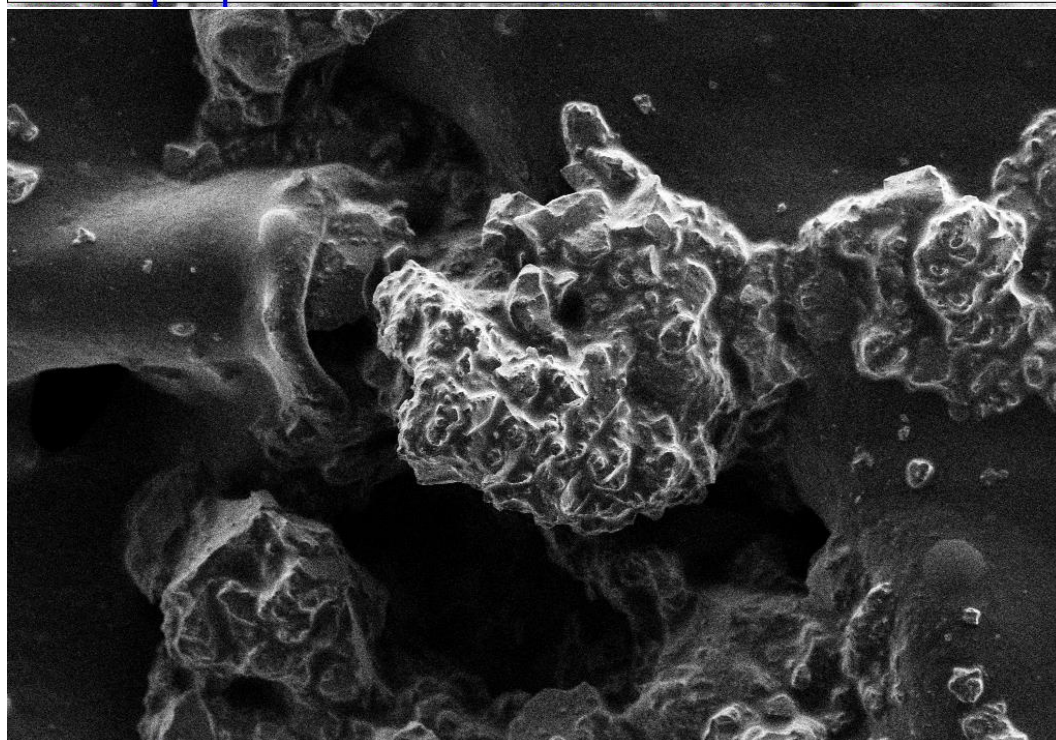
Mag = 5.00 K X 1 µm
 FIB Lock Mags = No H
 FIB Mag = 704 X
 EHT = 2.00 kV
 WD = 4.2 mm
 Stage at Z = 38.426 mm
 Stage at M = 4.693 mm
 Image Pixel Size = 58.79 nm
 Stage at T = 0.0 ° Signal A = SE2
 Tilt Corr. = Off Signal B = SE2
 Tilt Angle = 0.0 ° Scan Rotation = 0.0 °
 Mixing = Off
 Mix Signal = 0.5000
 Aperture No. = 1
 FIB Blanked = Yes
 FIB Probe = 30KV-500 pA
 FIB Imaging = SEM



Mag = 5.00 K X 1 µm
 FIB Lock Mags = No H
 FIB Mag = 704 X
 EHT = 2.00 kV
 WD = 4.2 mm
 Stage at Z = 38.426 mm
 Stage at M = 4.693 mm
 Image Pixel Size = 58.79 nm
 Stage at T = 0.0 ° Signal A = SE2
 Tilt Corr. = Off Signal B = SE2
 Tilt Angle = 0.0 ° Scan Rotation = 0.0 °
 Mixing = Off
 Mix Signal = 0.5000
 Aperture No. = 1
 FIB Blanked = Yes
 FIB Probe = 30KV-500 pA
 FIB Imaging = SEM



Mag = 20.00 K X
 FIB Lock Mags = No
 FIB Mag = 704 X
 EHT = 2.00 kV
 WD = 4.2 mm
 Stage at Z = 38.426 mm
 Stage at M = 4.693 mm
 Image Pixel Size = 14.70 nm
 Stage at T = 0.0 °
 Signal A = SE2
 Tilt Corr. = Off
 Signal B = SE2
 Tilt Angle = 0.0 °
 Scan Rotation = 0.0 °
 Mixing = Off
 Mix Signal = 0.5000
 Aperture No. = 1
 FIB Blanked = Yes
 FIB Probe = 30KV-500 pA
 FIB Imaging = SEM



Mag = 1.00 K X
 FIB Lock Mags = No
 FIB Mag = 704 X
 EHT = 2.00 kV
 WD = 4.2 mm
 Stage at Z = 38.426 mm
 Stage at M = 4.693 mm
 Image Pixel Size = 294.6 nm
 Stage at T = 0.0 °
 Signal A = SE2
 Tilt Corr. = Off
 Signal B = SE2
 Tilt Angle = 0.0 °
 Scan Rotation = 0.0 °
 Mixing = Off
 Mix Signal = 0.5000
 Aperture No. = 1
 FIB Blanked = Yes
 FIB Probe = 30KV-500 pA
 FIB Imaging = SEM

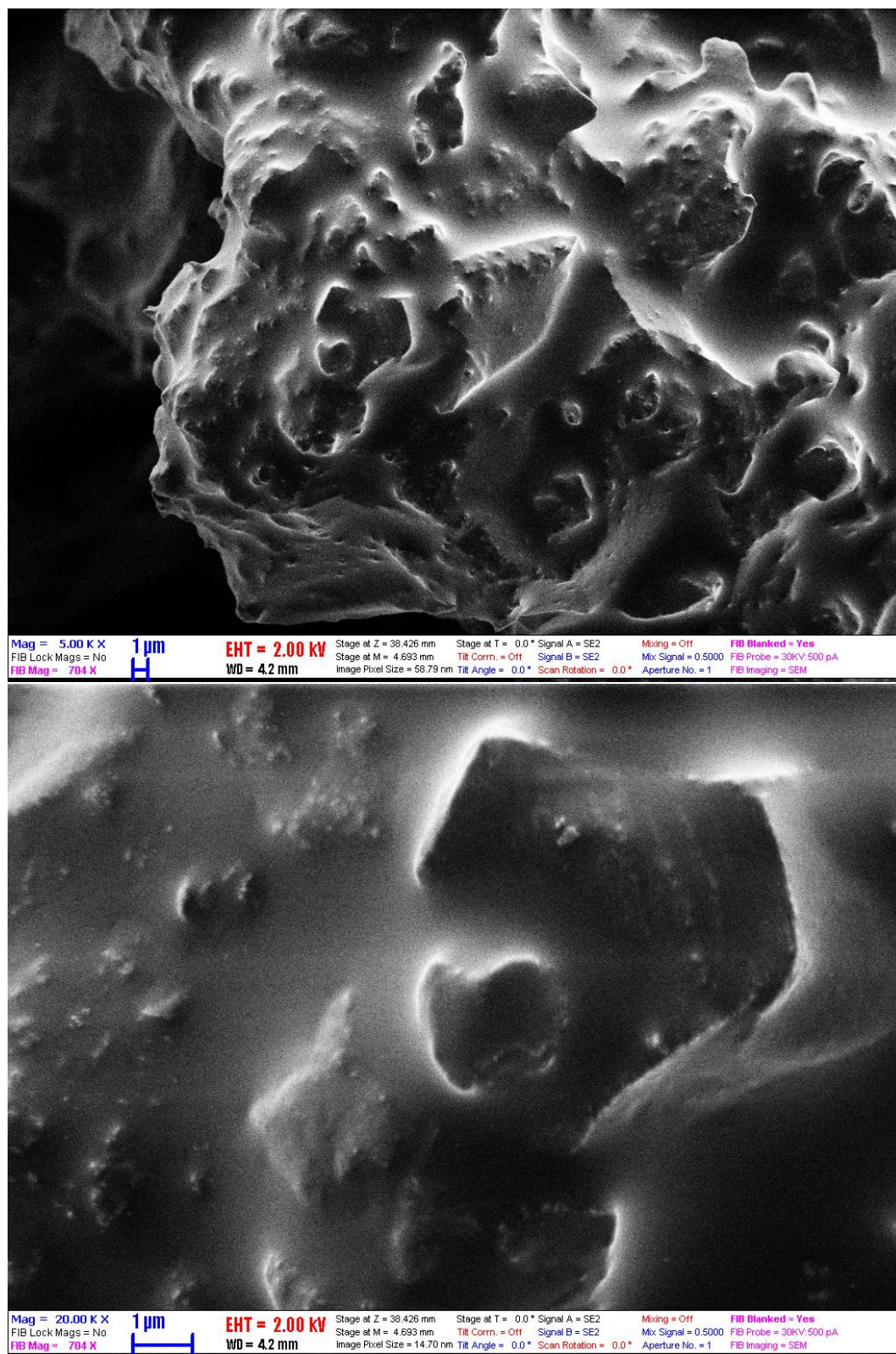


Figure S7 IM-BF4-0.5

2. EDS spectra of the IL – silica nanocomposites

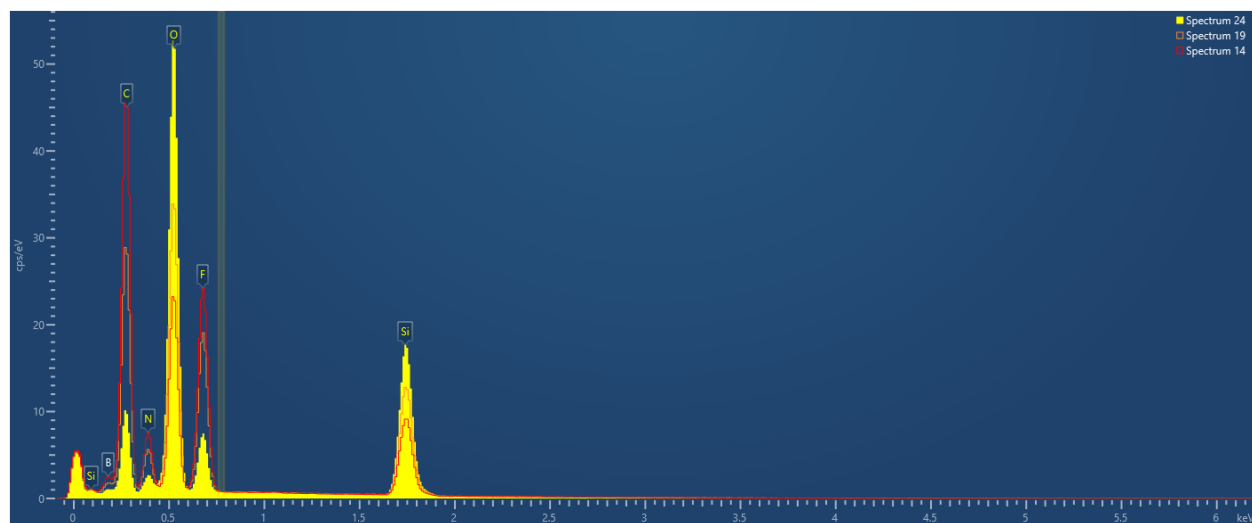


Figure S8 EDS spectra of samples **IM-BF4-0.1**, **IM-BF4-0.3**, **IM-BF4-0.5** .

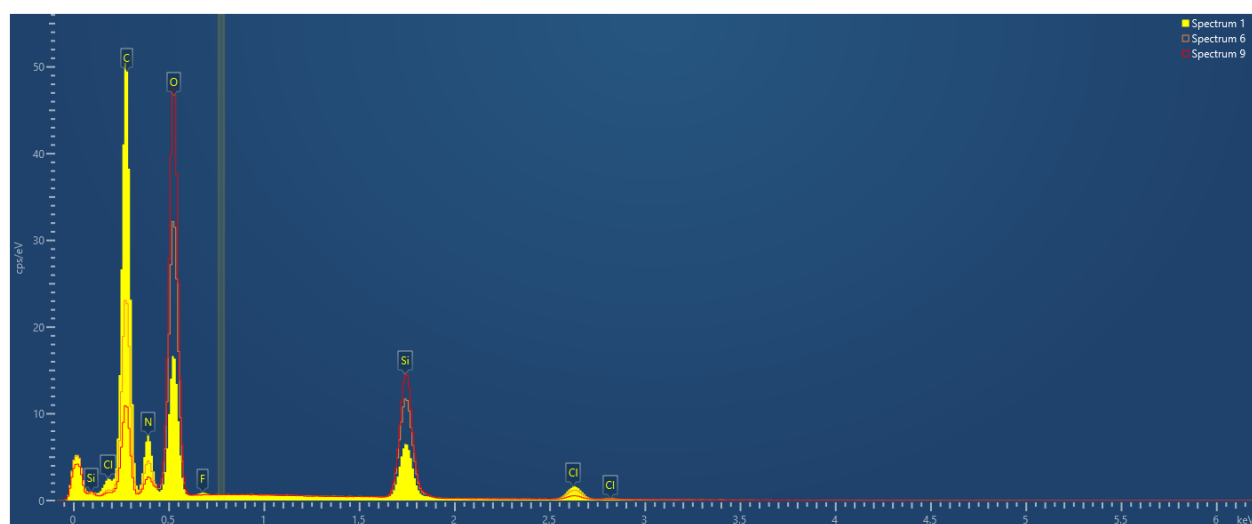


Figure S9 EDS spectra of samples **IM-Cl-0.1**, **IM-Cl-0.3**, **IM-Cl-0.5** .