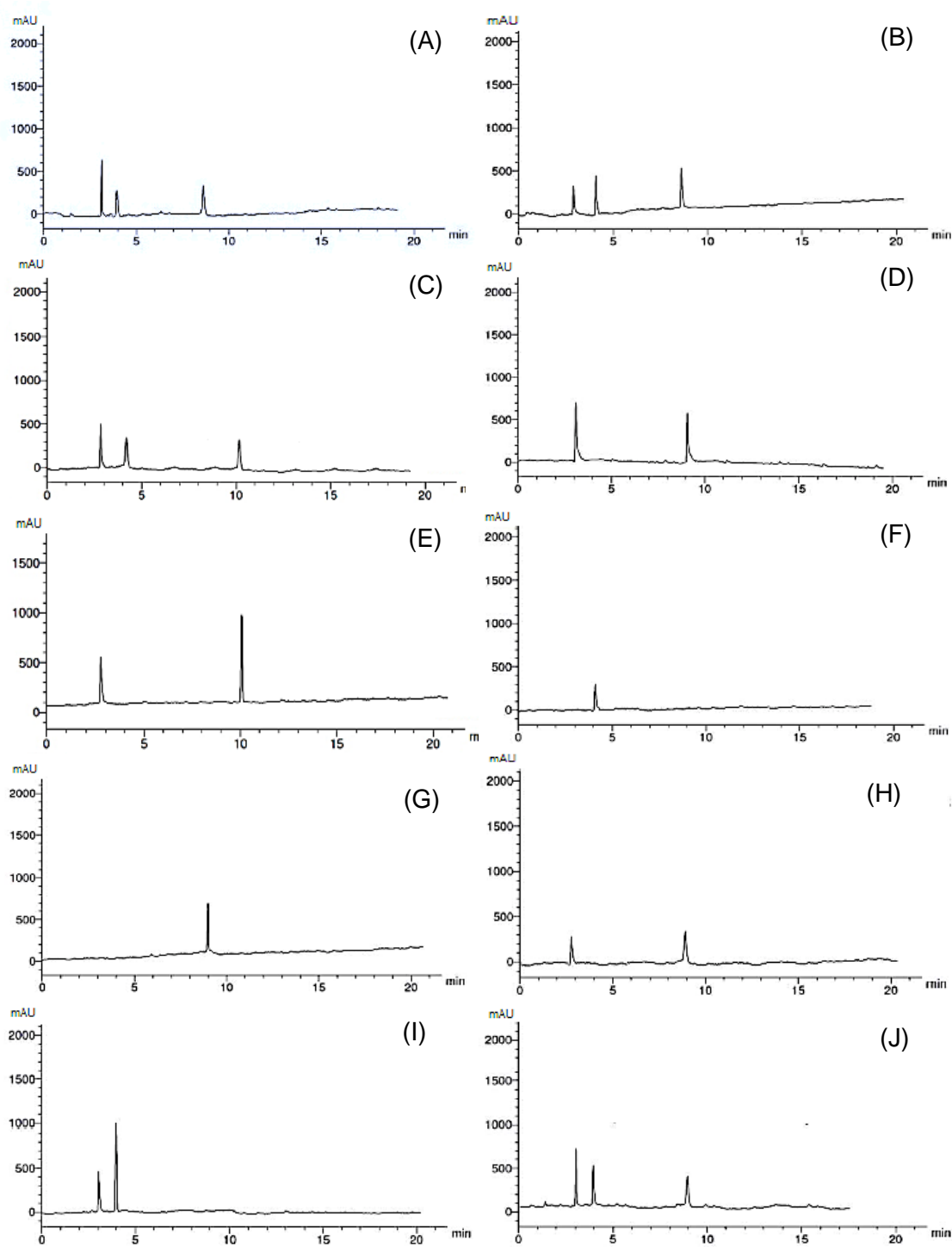


**Table S1.** Reference sequences retrieved from GenBank database used for phylogenetic analysis.

Species Name	Isolate Number	Host	Location	GenBank Accession Numbers		
				<i>rpb2</i>	<i>gapdh</i>	<i>Alt-a1</i>
<i>Alternaria alstroemeriae</i>	CBS 118808	<i>Alstroemeria</i> sp.	USA	KP124764	KP124153	KP123845
<i>A. alternantherae</i>	CBS 124392	<i>Solanum melongena</i>	China	KC584374	KC584096	KP123846
<i>A. alternata</i>	CBS 916.96 <sup>T</sup>	<i>Arachis hypogaeae</i>	India	KC584375	AY278808	KC584375
<i>A. alternata</i>	CBS 119399 <sup>T</sup>	<i>Minneola tangelo</i>	USA	KP124829	JQ646328	KP123910
<i>A. alternata</i>	CBS 119543 <sup>T</sup>	<i>Citrus paradisi</i>	USA	KP124831	KP124215	KP123911
<i>A. alternata</i>	CBS 918.96	<i>Dianthus chinensis</i>	UK	KC584435	AY278809	AY563302
<i>A. alternata</i>	CBS 103.33 <sup>T</sup>	Soil	Egypt	KP124770	KP124159	KP123852
<i>A. alternata</i>	CBS 102.47	<i>Citrus sinensis</i>	USA	KP124773	KP124161	KP123855
<i>A. alternata</i>	ALT2265	<i>Solanum lycopersicum</i>	Egypt	OP893862	OP893842	OP893822
<i>A. alternata</i>	ALT2262	<i>Solanum lycopersicum</i>	Egypt	OP893863	OP893843	OP893823
<i>A. alternata</i>	ALT2261	<i>Solanum lycopersicum</i>	Egypt	OP893864	OP893844	OP893824
<i>A. alternata</i>	ALT2258	<i>Solanum lycopersicum</i>	Egypt	OP893865	OP893845	OP893825
<i>A. alternata</i>	ALT2257	<i>Solanum lycopersicum</i>	Egypt	OP893866	OP893846	OP893826
<i>A. alternata</i>	ALT2255	<i>Solanum lycopersicum</i>	Egypt	OP893867	OP893847	OP893827
<i>A. alternata</i>	ALT2254	<i>Solanum lycopersicum</i>	Egypt	OP893868	OP893848	OP893828
<i>A. alternata</i>	ALT2246	<i>Solanum lycopersicum</i>	Egypt	OP893869	OP893849	OP893829
<i>A. alternata</i>	ALT2244	<i>Solanum lycopersicum</i>	Egypt	OP893870	OP893850	OP893830
<i>A. alternata</i>	ALT2242	<i>Solanum lycopersicum</i>	Egypt	OP893871	OP893851	OP893831
<i>A. alternata</i>	ALT2236	<i>Solanum lycopersicum</i>	Egypt	OP893872	OP893852	OP893832
<i>A. alternata</i>	ALT2232	<i>Solanum lycopersicum</i>	Egypt	OP893873	OP893853	OP893833
<i>A. alternata</i>	ALT2230	<i>Solanum lycopersicum</i>	Egypt	OP893874	OP893854	OP893834
<i>A. alternata</i>	ALT2224	<i>Solanum lycopersicum</i>	Egypt	OP893875	OP893855	OP893835
<i>A. alternata</i>	ALT2223	<i>Solanum lycopersicum</i>	Egypt	OP893876	OP893856	OP893836
<i>A. alternata</i>	ALT2215	<i>Solanum lycopersicum</i>	Egypt	OP893877	OP893857	OP893837
<i>A. alternata</i>	ALT2213	<i>Solanum lycopersicum</i>	Egypt	OP893878	OP893858	OP893838
<i>A. alternata</i>	ALT2210	<i>Solanum lycopersicum</i>	Egypt	OP893879	OP893859	OP893839
<i>A. alternata</i>	ALT2208	<i>Solanum lycopersicum</i>	Egypt	OP893880	OP893860	OP893840
<i>A. alternata</i>	ALT2203	<i>Solanum lycopersicum</i>	Egypt	OP893881	OP893861	OP893841
<i>Alternaria arborescens</i>	CBS 101.13 <sup>T</sup>	Peat soil	Switzerland	KP124862	KP124244	KP123940
<i>Alternaria arborescens</i>	CBS 119544 <sup>T</sup>	<i>Avena sativa</i>	New Zealand	KP124878	KP125186	KP123955
<i>Alternaria betae-kenyensis</i>	CBS 118810	<i>Beta vulgaris</i> var.cicla	Kenya	JQ905180	JQ905161	JQ905104
<i>Alternaria burnsii</i>	CBS 107.38	<i>Cuminum cyminum</i>	India	JQ646457	JQ646305	JQ646388
<i>Alternaria burnsii</i>	CBS 118816	<i>Rhizophora mucronata</i>	India	KP124892	KP124273	KP123970
<i>Alternaria burnsii</i>	CBS 118817	<i>Tinospora cordifolia</i>	India	KP124893	KP124275	KP123972
<i>Alternaria eichhorniae</i>	CBS 489.92 <sup>T</sup>	<i>Eichhornia crassipes</i>	India	KP124895	KP124276	KP123973
<i>Alternaria gaisen</i>	CBS632.93	<i>Pyrus pyrifolia</i>	Japan	KC584399	KC584116	KP123974
<i>Alternaria gaisen</i>	CBS 118488	<i>Pyrus pyrifolia</i>	Japan	KP124897	KP124278	KP123975
<i>Alternaria gossypina</i>	CBS 104.32	<i>Gossypium</i> sp.	Zimbabwe	KP124900	JQ646312	JQ646395
<i>Alternaria gossypina</i>	CBS 107.36	soil	Indonesia	KP124901	JQ646310	JQ646393
<i>Alternaria iridiauxtralis</i>	CBS 118486 <sup>T</sup>	<i>Iris</i> sp.	Australia	KP124905	KP124284	KP123981
<i>Alternaria iridiauxtralis</i>	CBS 118487	<i>Iris</i> sp.	Australia	KP124906	KP124285	KP123982

<i>Alternaria jacinthicola</i>	CBS 133751 <sup>T</sup>	<i>Arachis hypogaea</i>	Mauritius	KP124908	KP124287	KP123984
<i>Alternaria longipes</i>	CBS 540.94	<i>Nicotiana tabacum</i>	USA	KC584409	AY278811	AY563304
<i>Alternaria longipes</i>	CBS 121333	<i>Nicotiana tabacum</i>	USA	KP124914	KP124293	KP123990
<i>Alternaria tomato</i>	CBS 103.30	<i>Solanum lycopersicum</i>	Unknown	KP124915	KP124294	KP123991
<i>Alternaria tomato</i>	CBS 114.35	<i>Solanum lycopersicum</i>	Unknown	KP124916	KP124295	KP123992

The ex-type cultures are indicated with superscript (T), and the isolates obtained in this study are boldfaced.



**Figure S1.** HPLC chromatograms of Alternuene (ALT), Alternariol (AOH), Tenuazonic Acid (TeA) and Alternuisol (AS) produced by *A. alternata* isolates: ALT 2261(A); ALT 2258 (B); ALT 2265 (C); ALT 2210 (D); ALT 2224 (E); ALT 2244 (F); ALT 2254 (G); ALT 2232 (H); ALT 2257 (I); ALT 2215 (J).