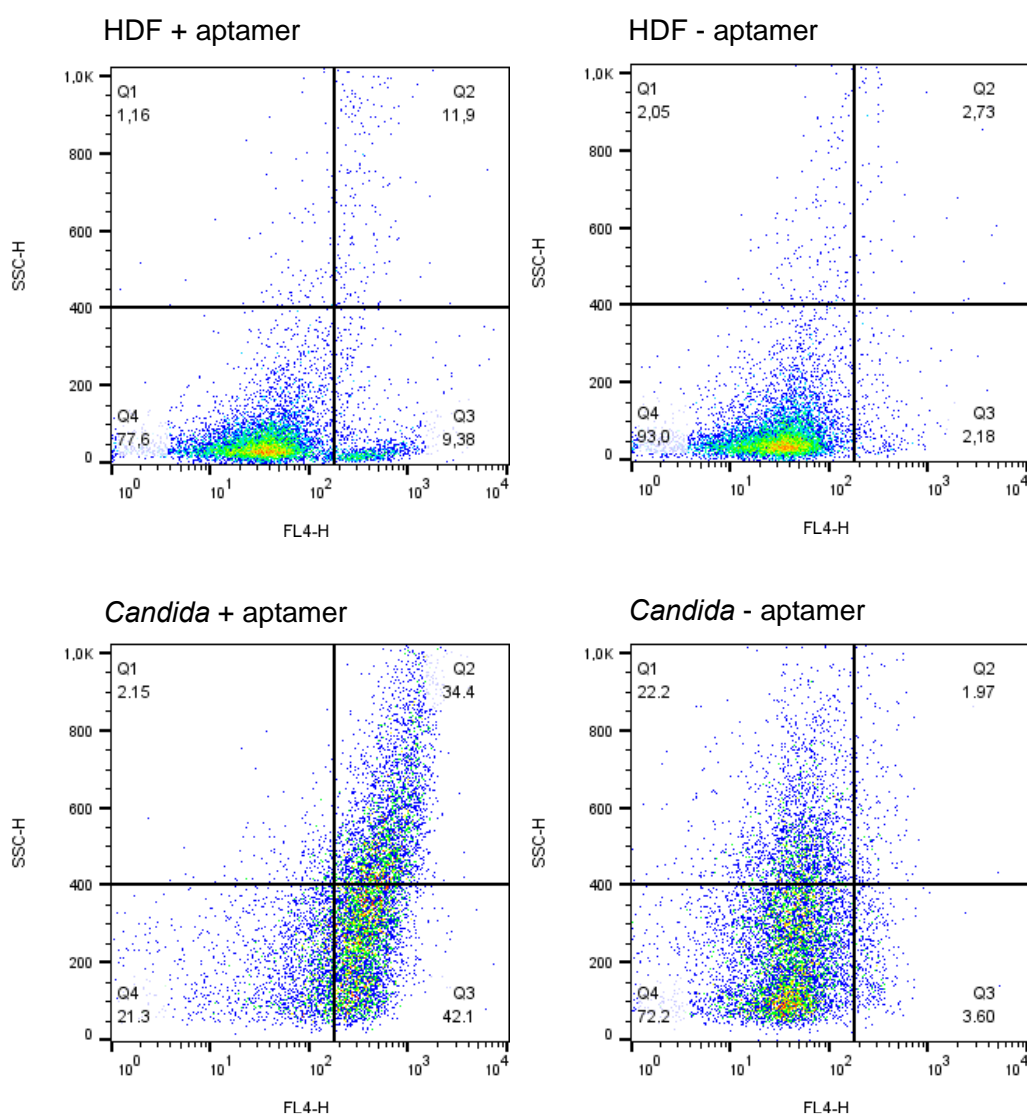


# A Polyclonal SELEX Aptamer Library Allows Differentiation of *Candida albicans*, *C. auris* and *C. parapsilosis* Cells from Human Dermal Fibroblasts

## Supplementary Materials



**Supplementary Figure S1. Flow-cytometry data show detection of fluorescently labeled *Candida* cells.** 10,000 cells were incubated with 10 pmol aptamers in 250  $\mu$ L PBS buffer, incubated for 15 minutes at 37 °C and then measured with a FACScalibur (BD, Franklin Lakes, USA).