

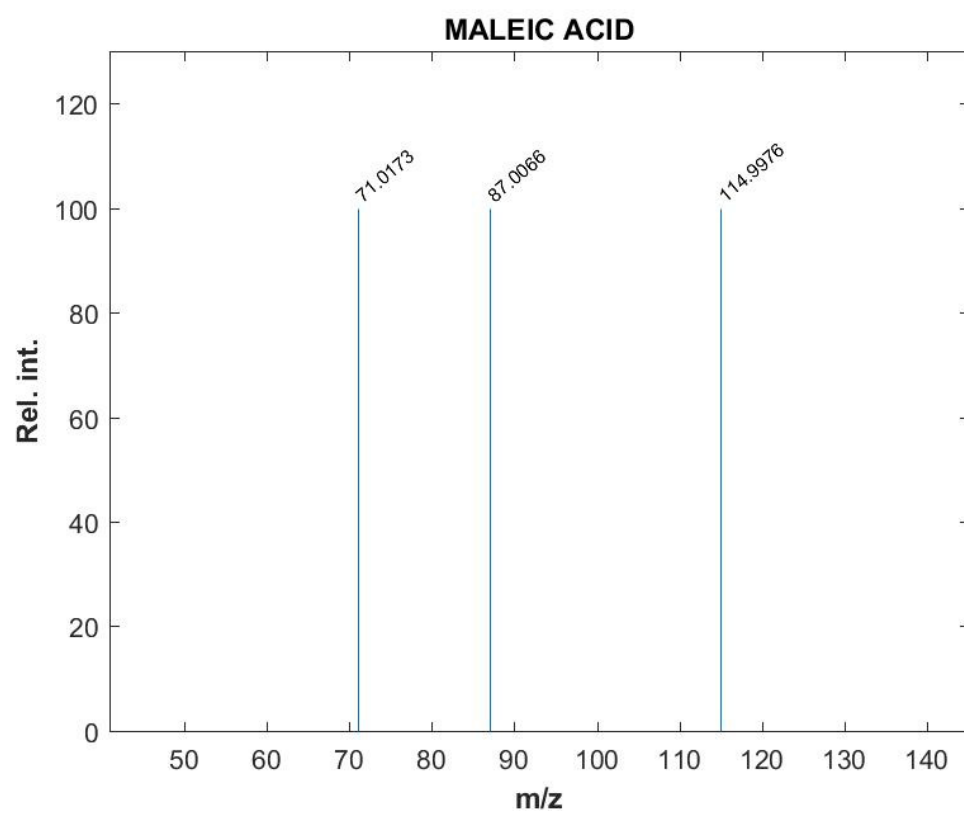
Table S1. Sequences of the utilized primers.

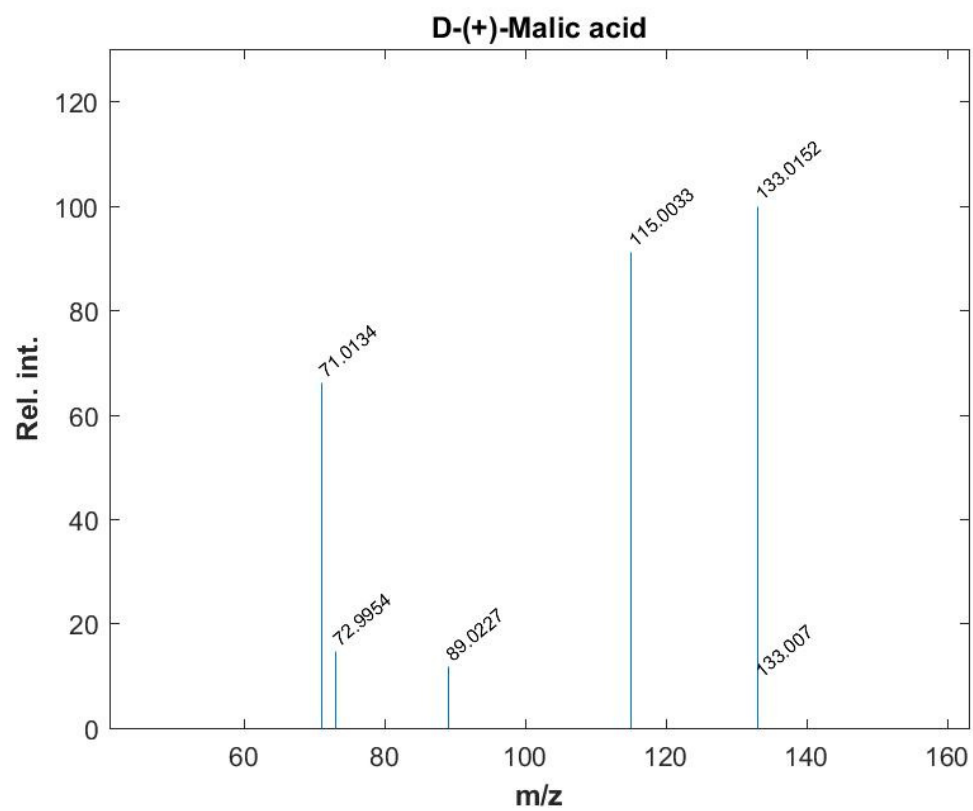
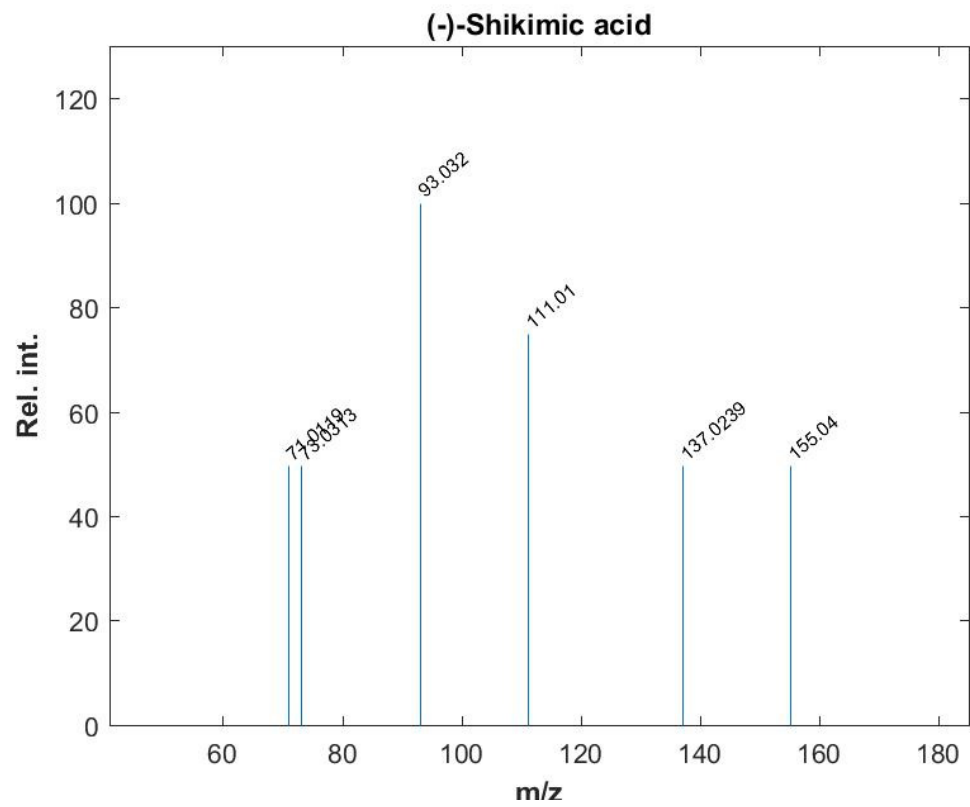
Genes	Sequence	
<i>CDR1</i>	F	5'-TAGCACATCAACTACACGAACGT-3'
	R	5'-AGAGTGAACATTAAGGATGCCATG-3'
<i>CDR2</i>	F	5'-GTGCTTTATGAAGGCTACCAGATT-3'
	R	5'-TCTTAGGACAGAAGTAACCCATCT-3'
<i>ERG11</i>	F	5'-ATTGGTGTCTTGATGGGTGGTC-3'
	R	5'-TCTTCTTGGACATCTGGTCTTTCA-3'
<i>URA3</i> (reference gene)	F	5'-GAAAACCAATCTTTGTGCTTCTCT-3'
	R	5'-CATGAGTCTTAAGCAAGCAAATGT-3'

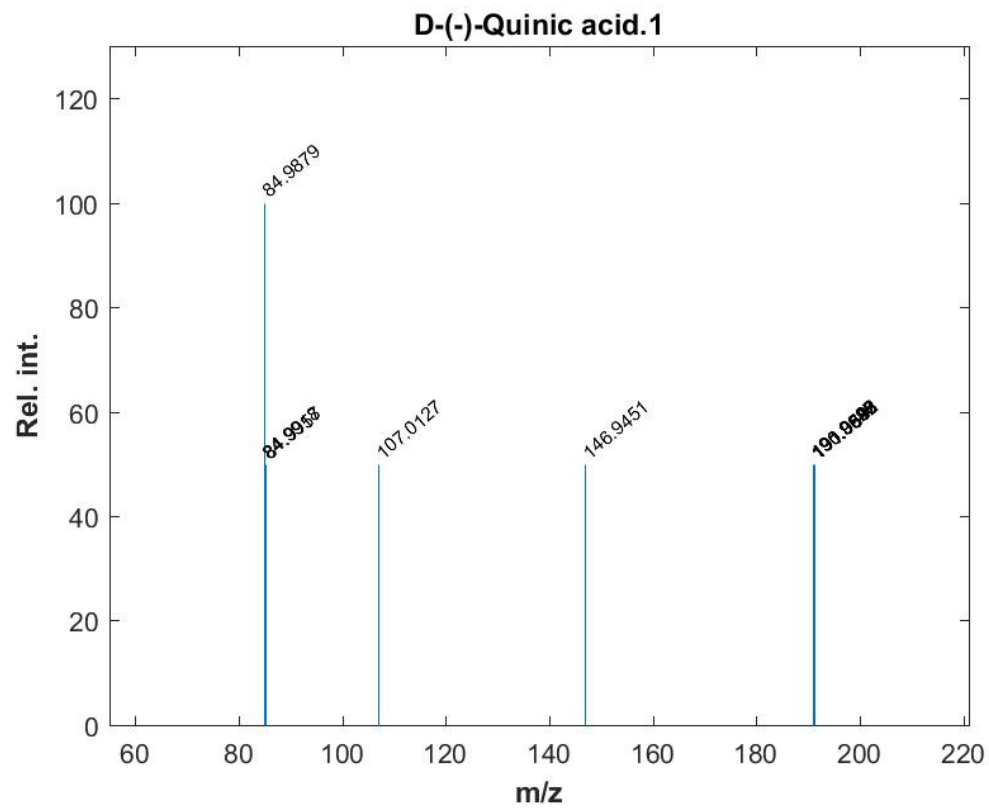
Table S2. MIC Values of EVME against the tested *C. glabrata* isolates.

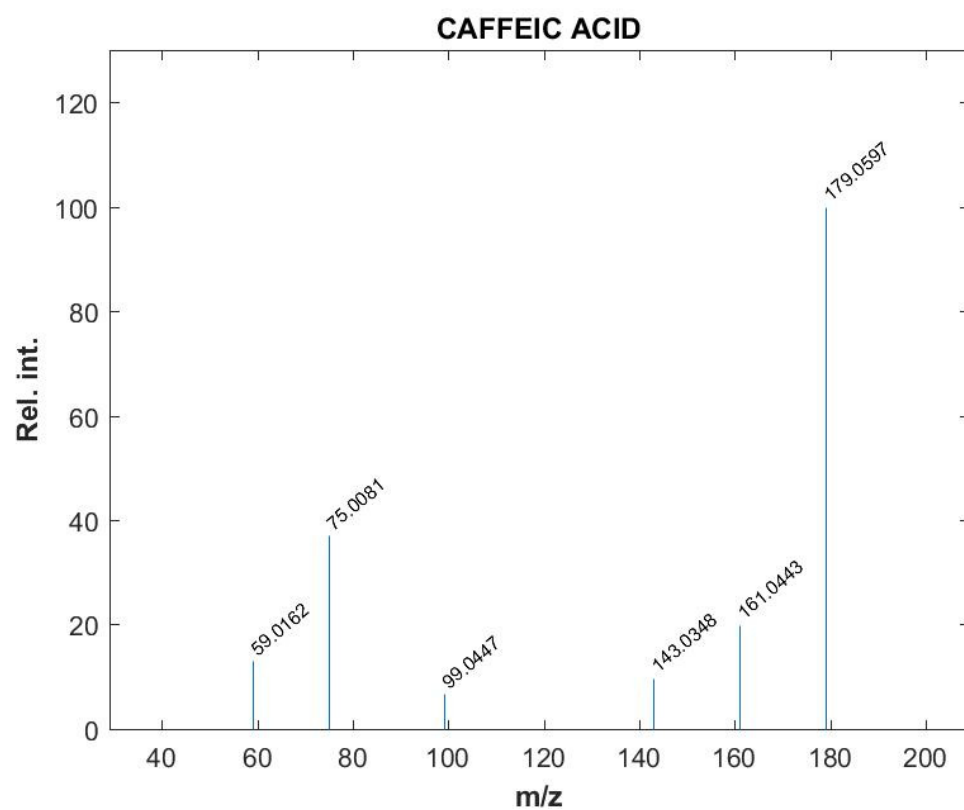
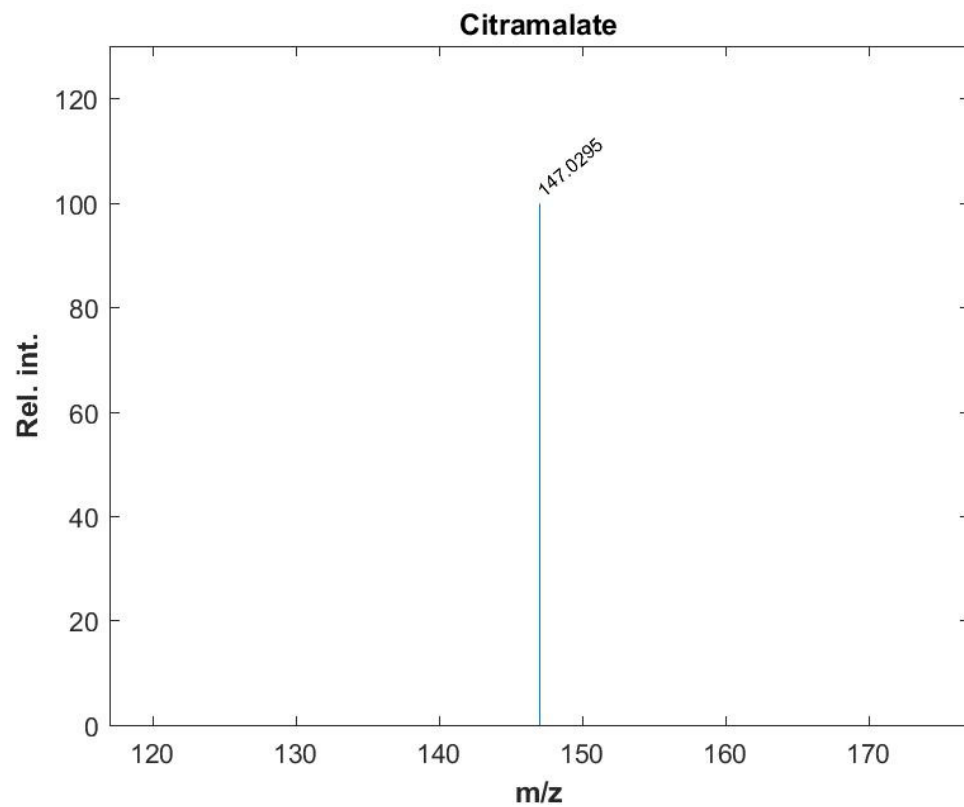
Isolate code	MIC value (µg/mL)	Isolate code	MIC value (µg/mL)
C1	32	C7	128
C2	32	C8	256
C3	256	C9	128
C4	64	C10	32
C5	128	C11	128
C6	32	C12	64

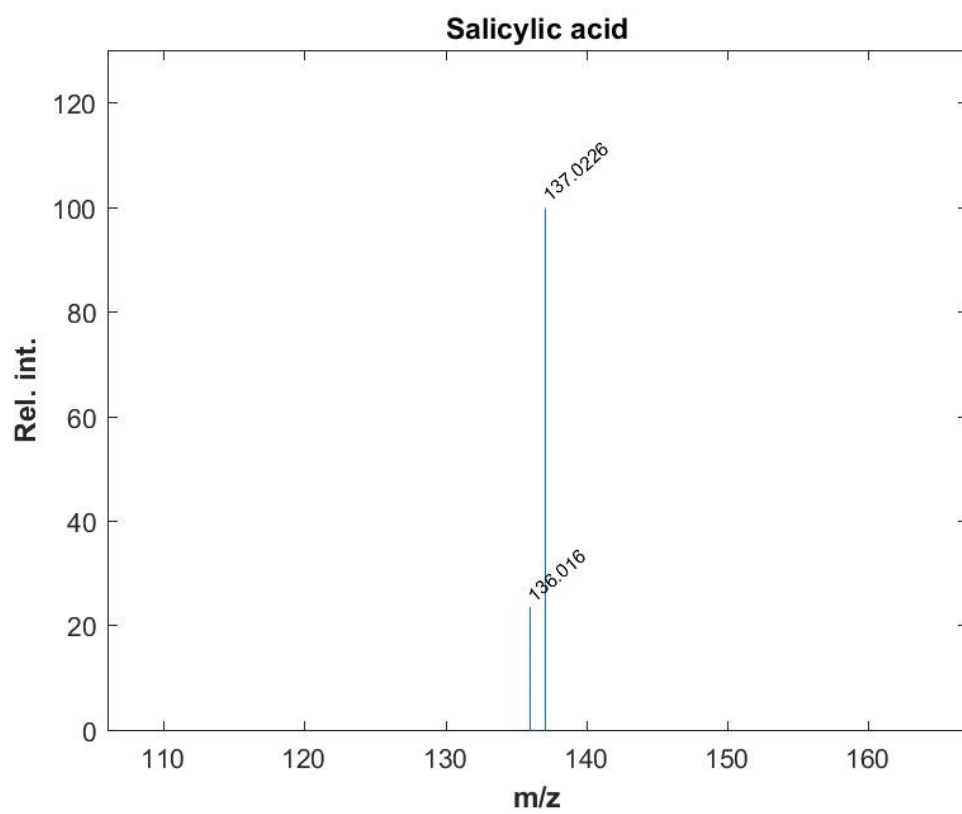
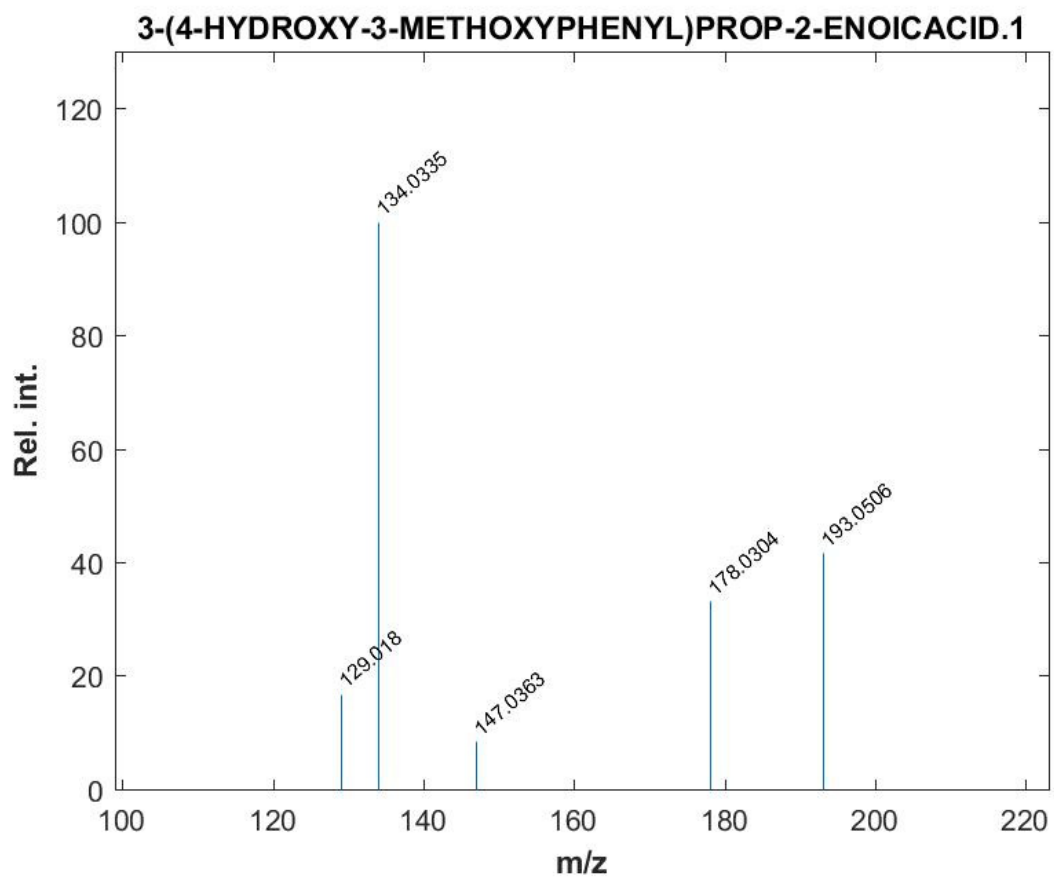
Figure S1. MS² spectral fragmentation of all identified metabolites.

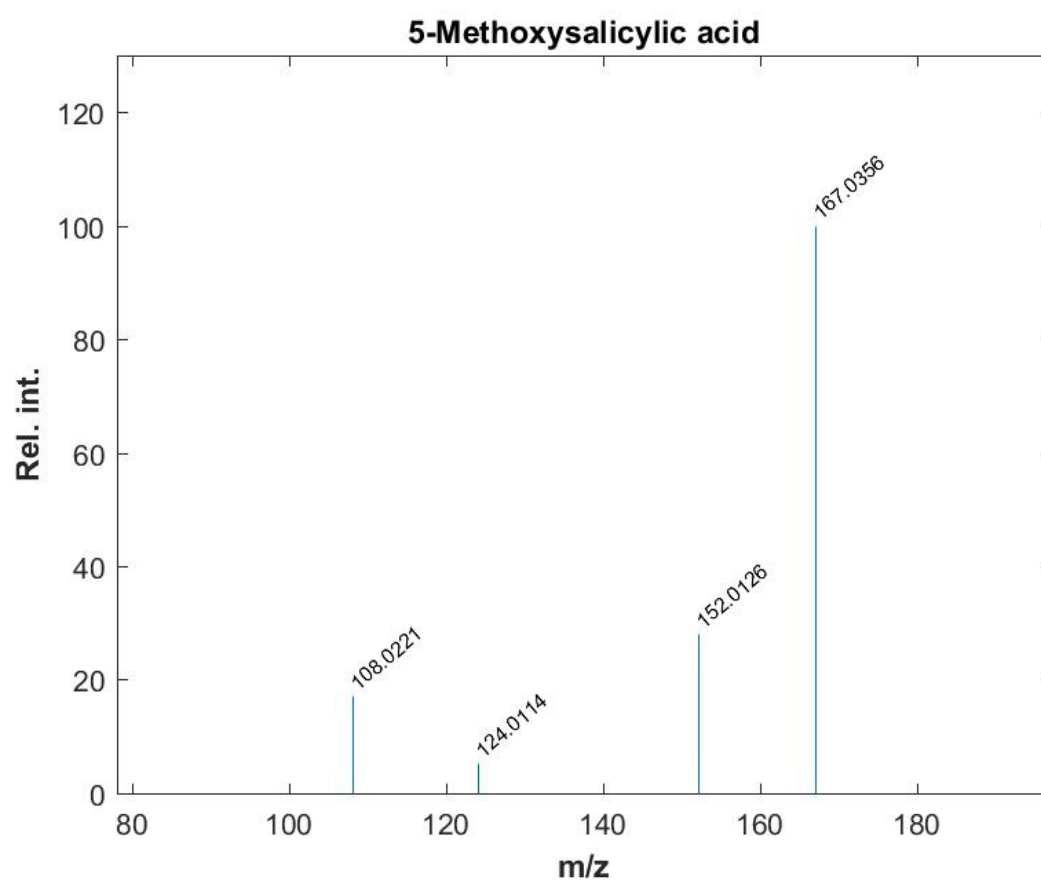
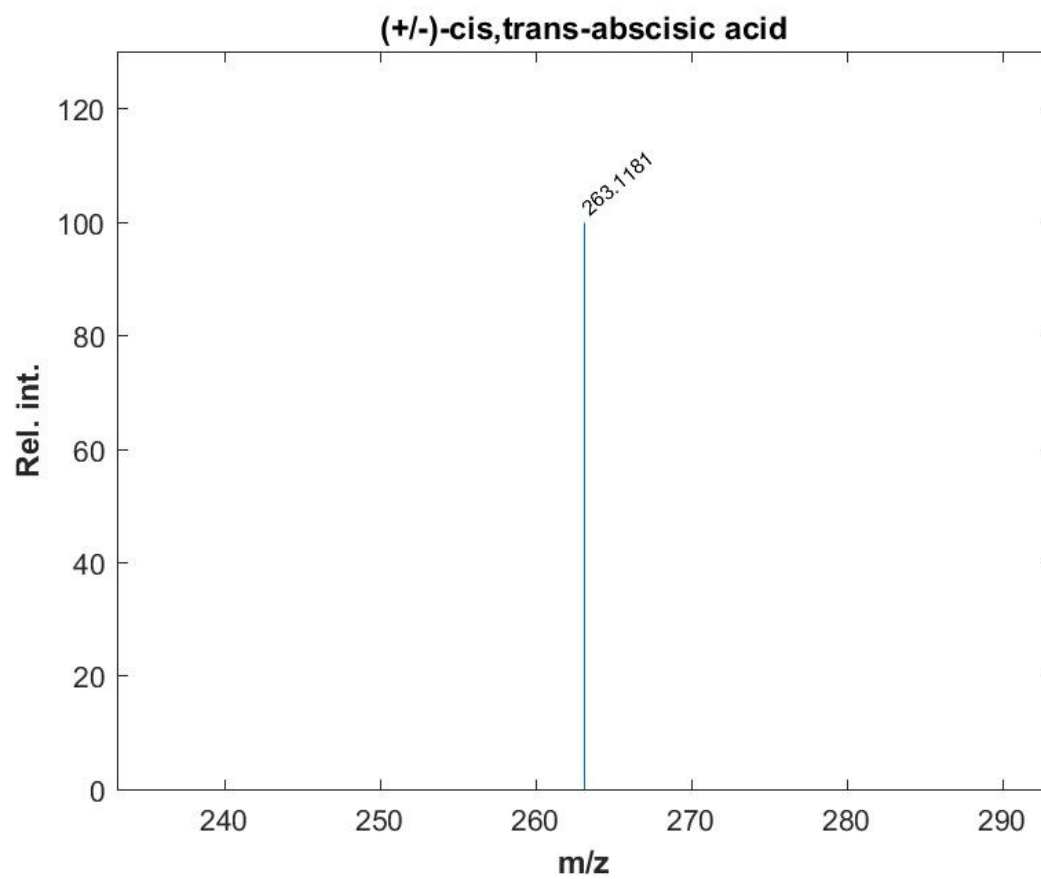


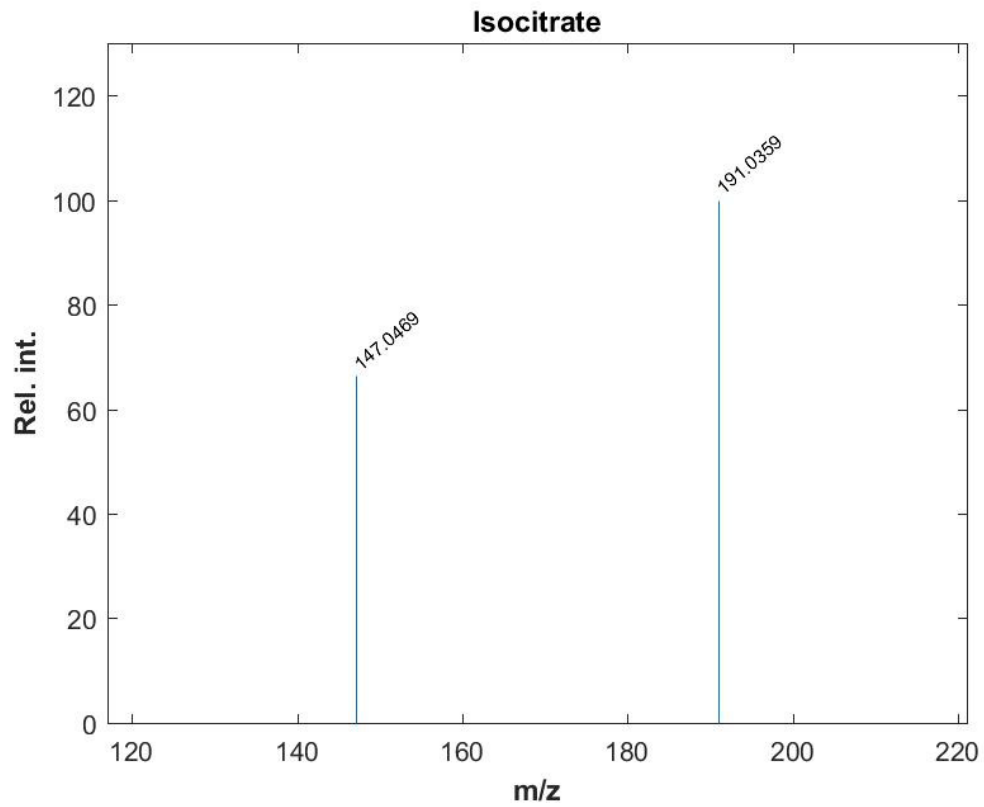
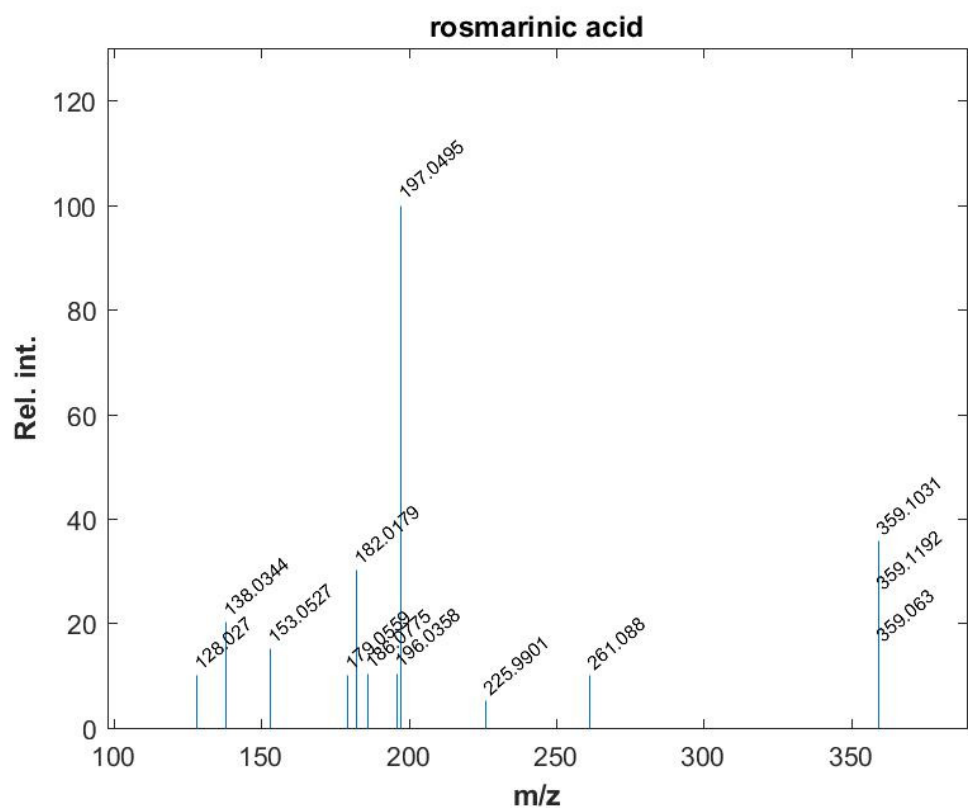


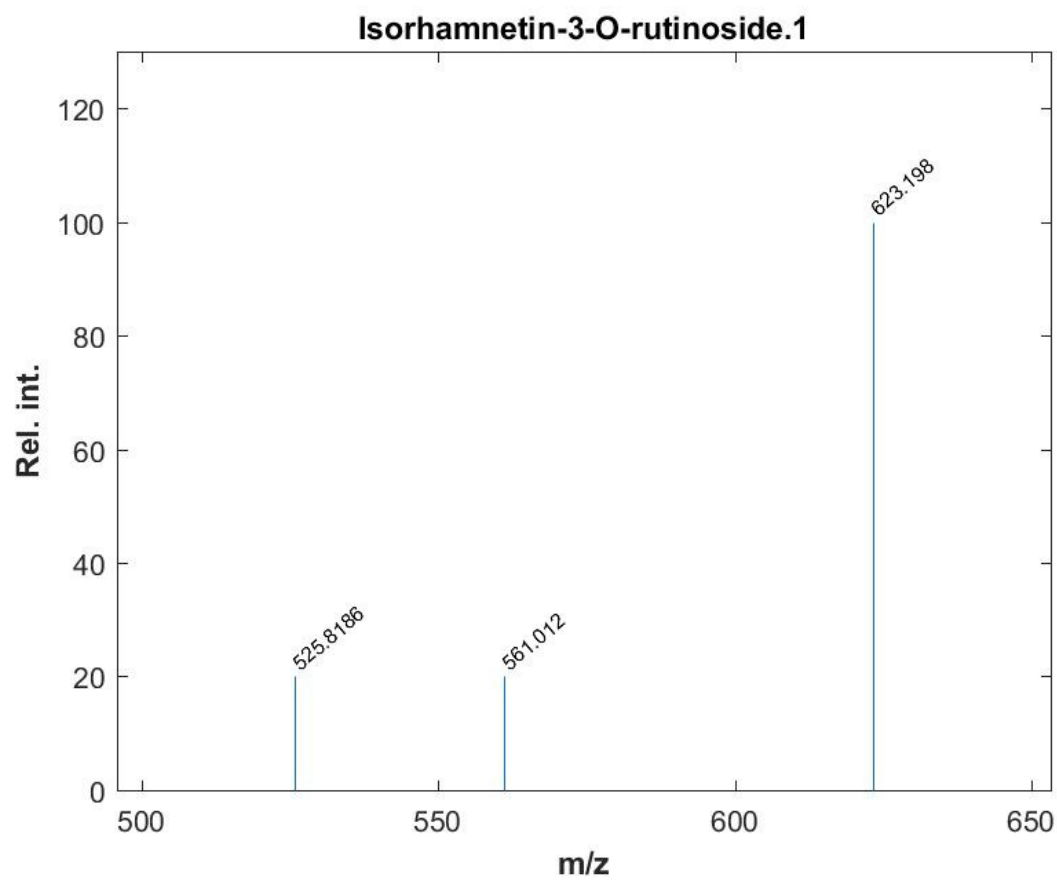
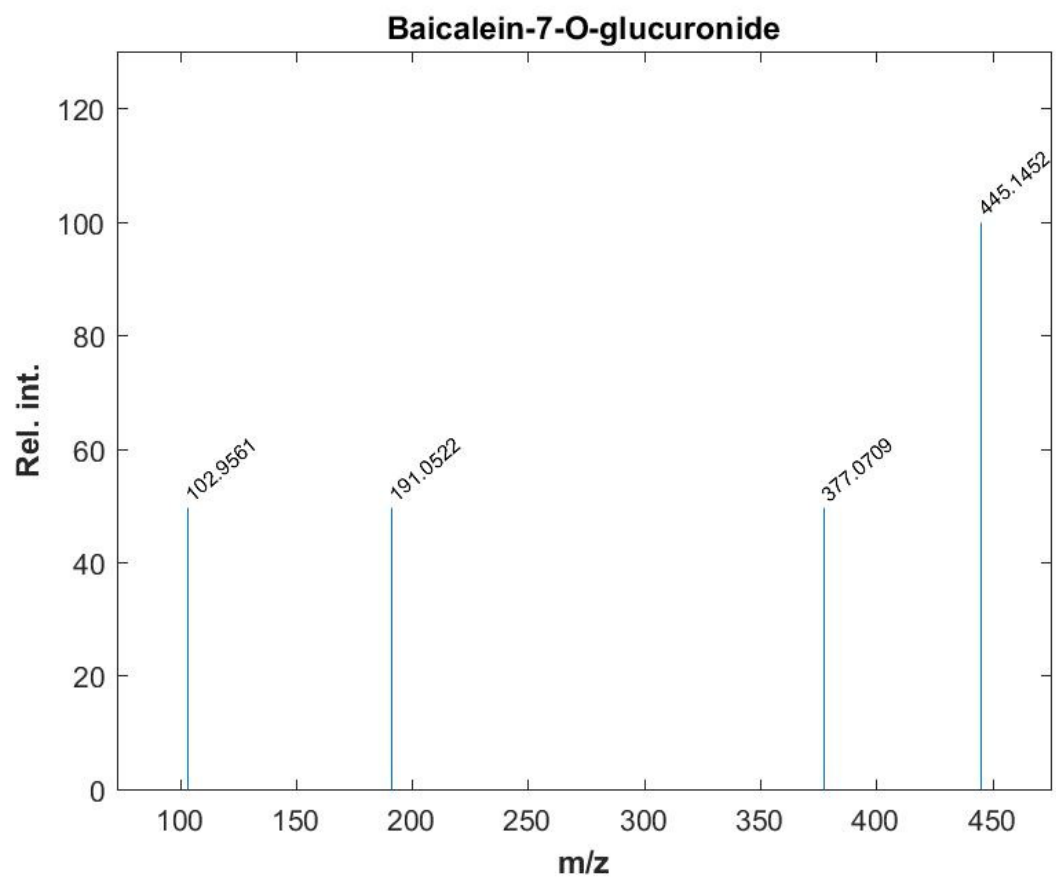


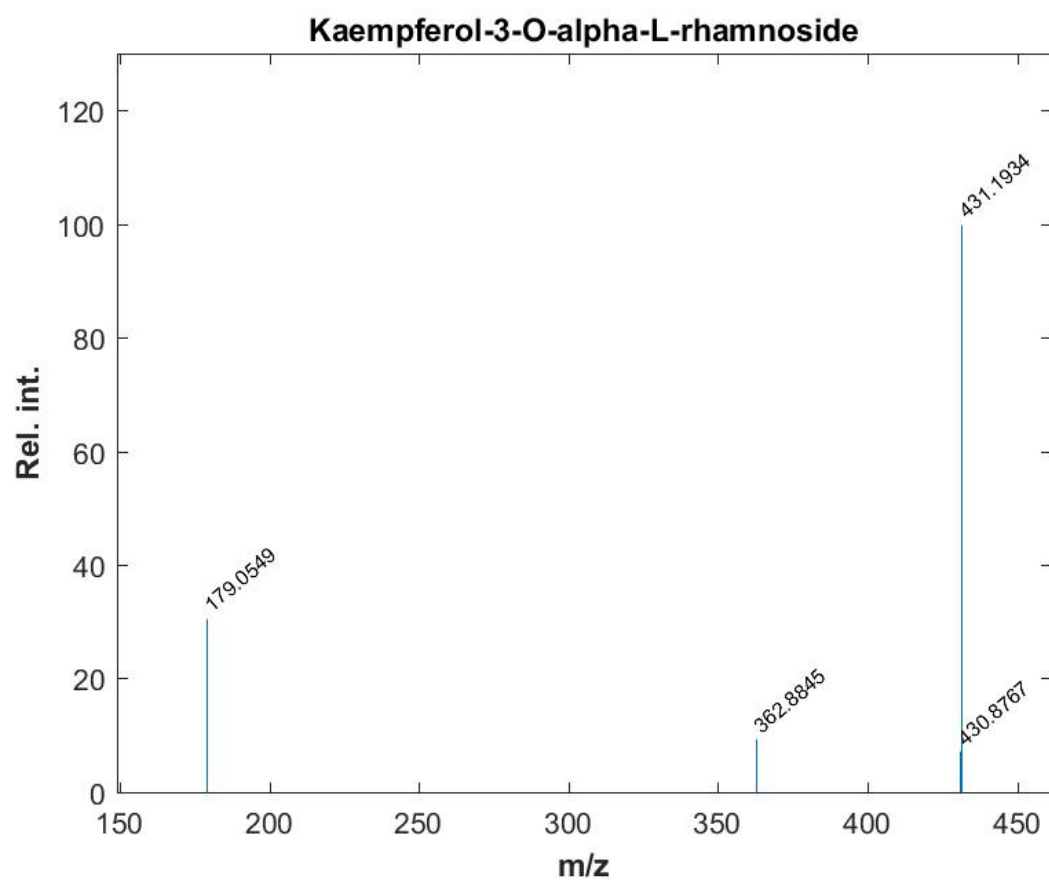
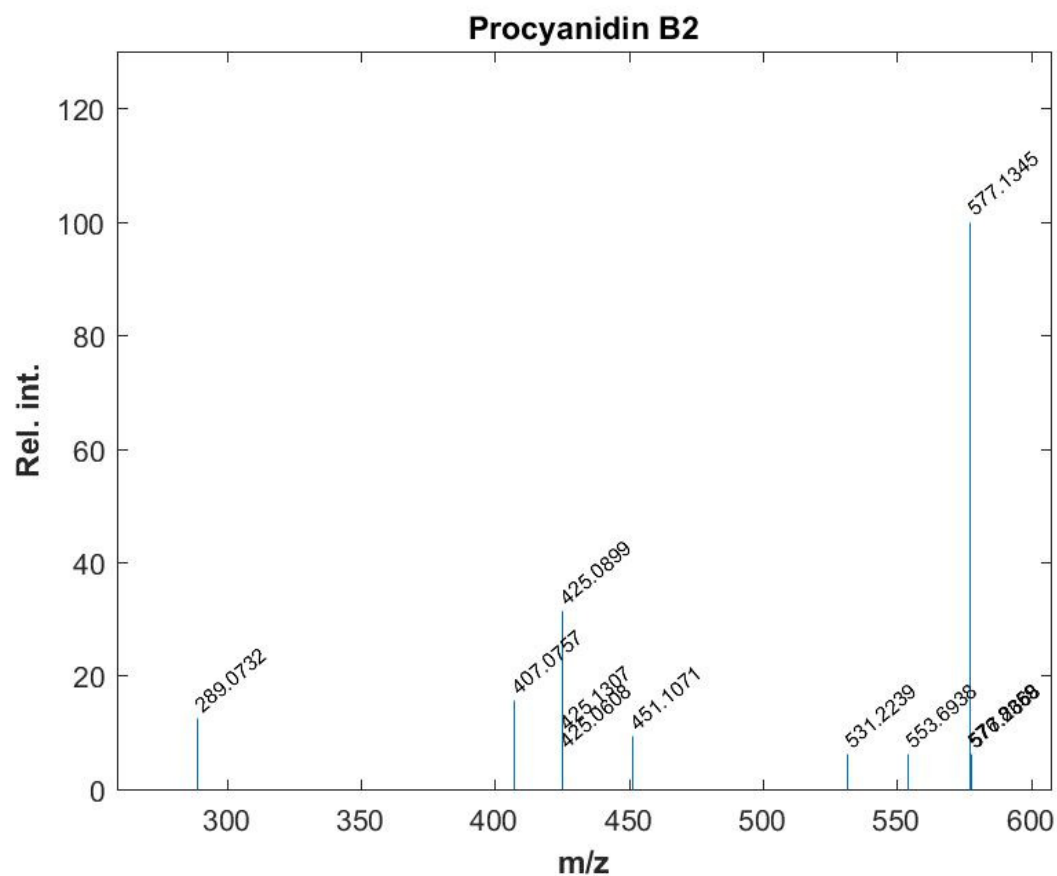




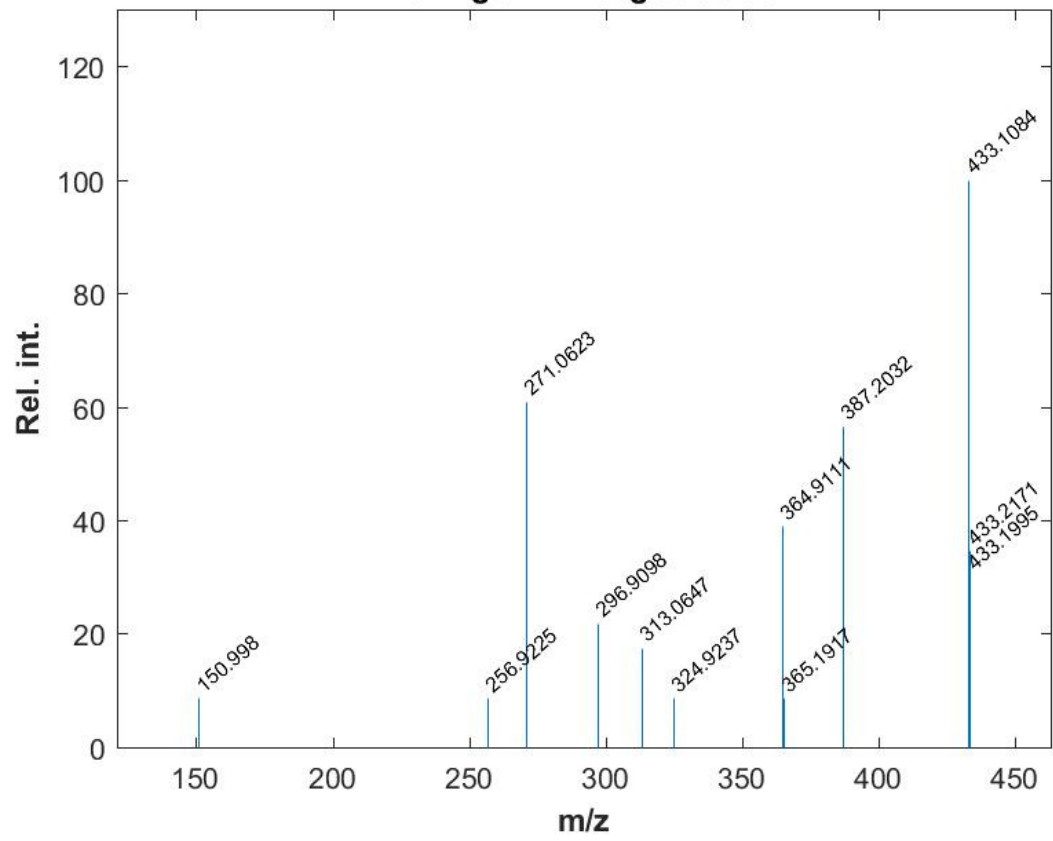


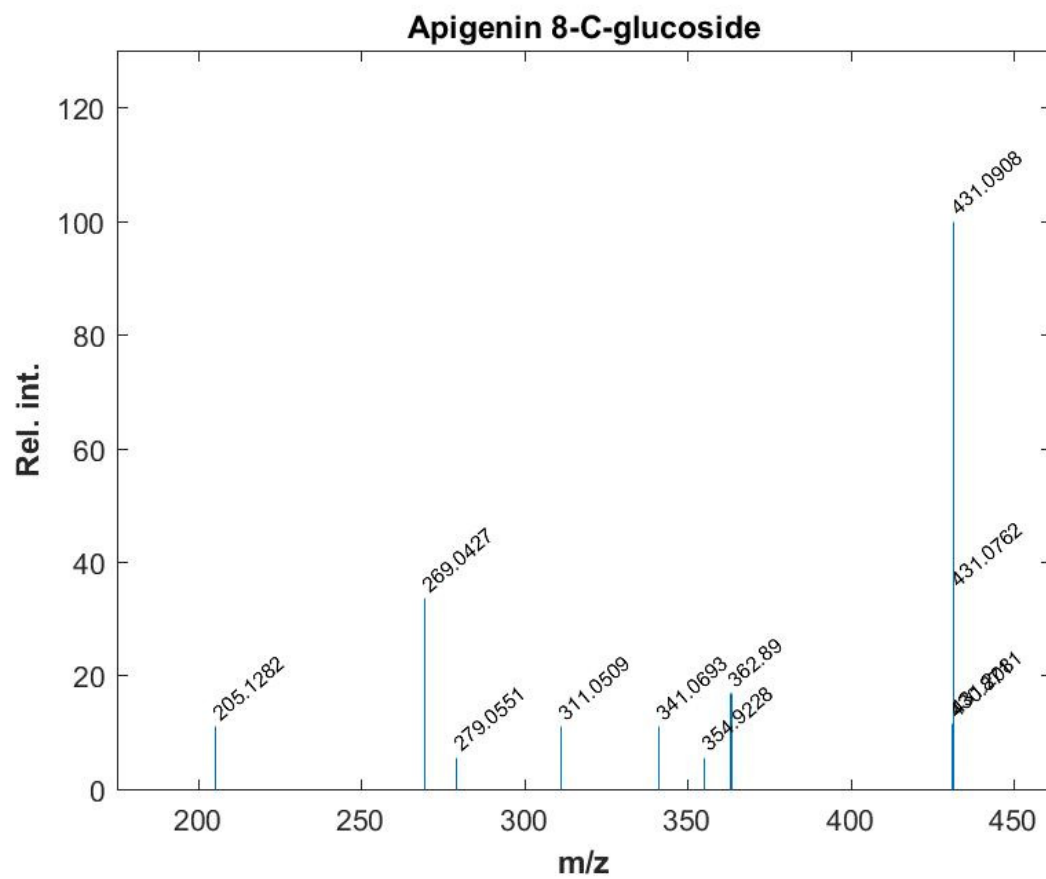
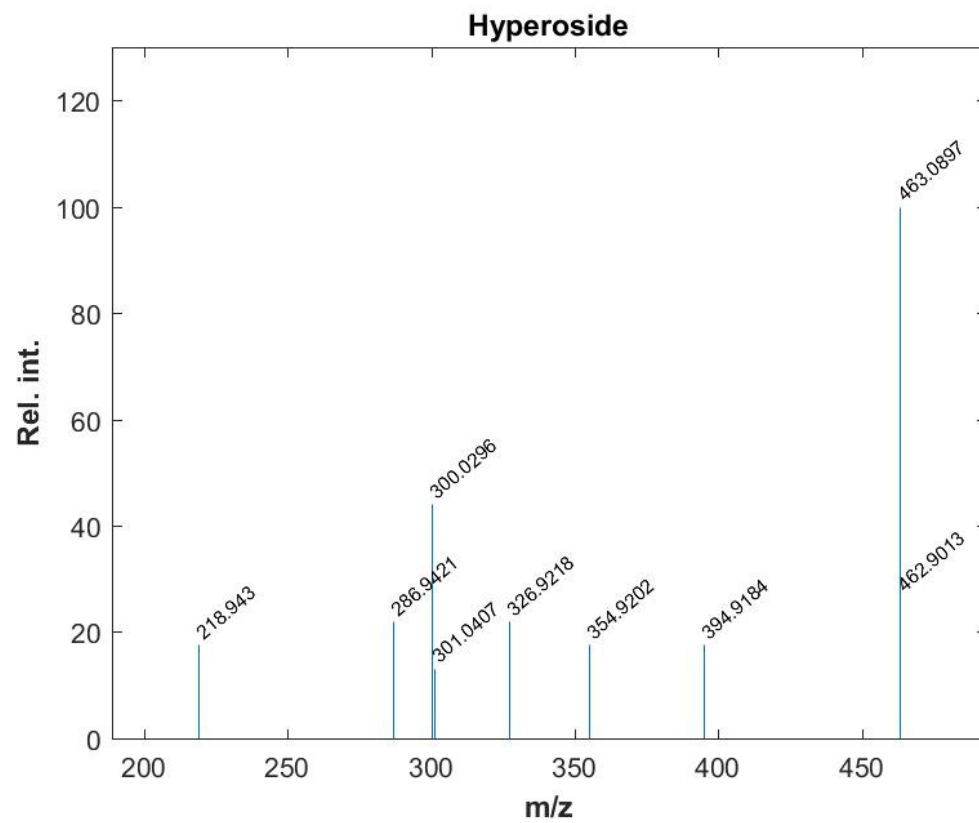


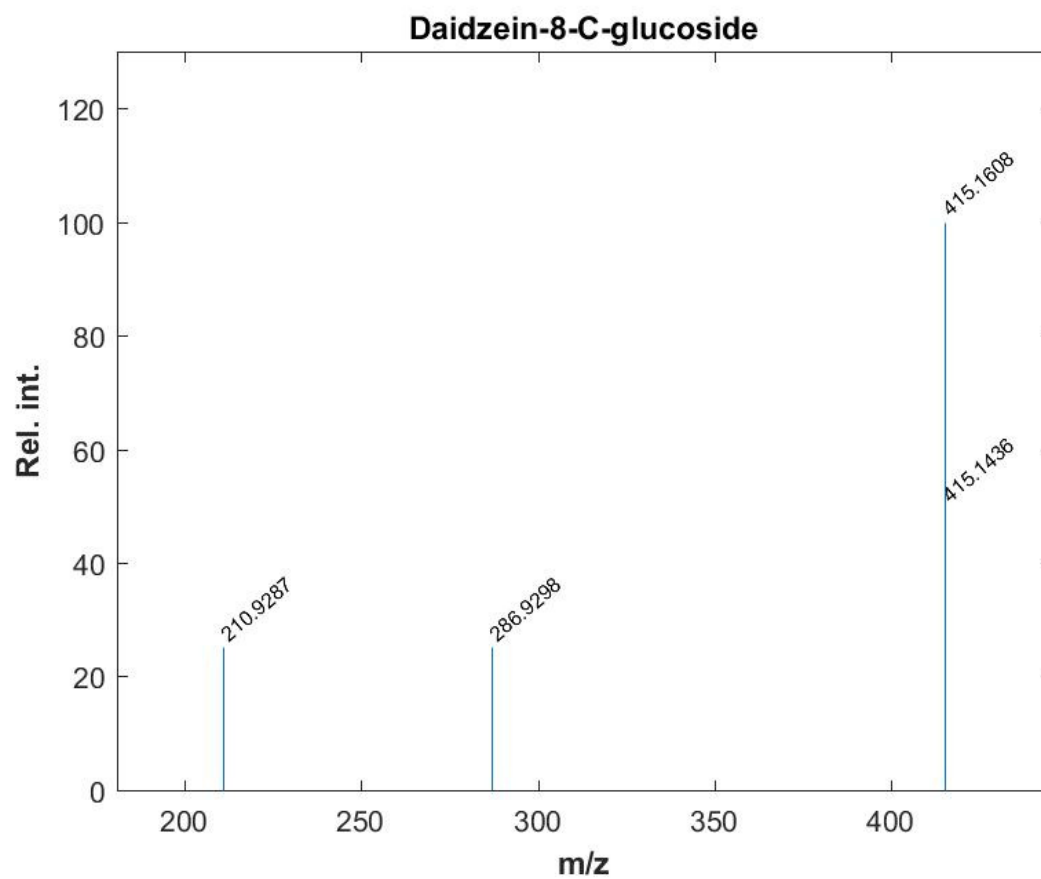
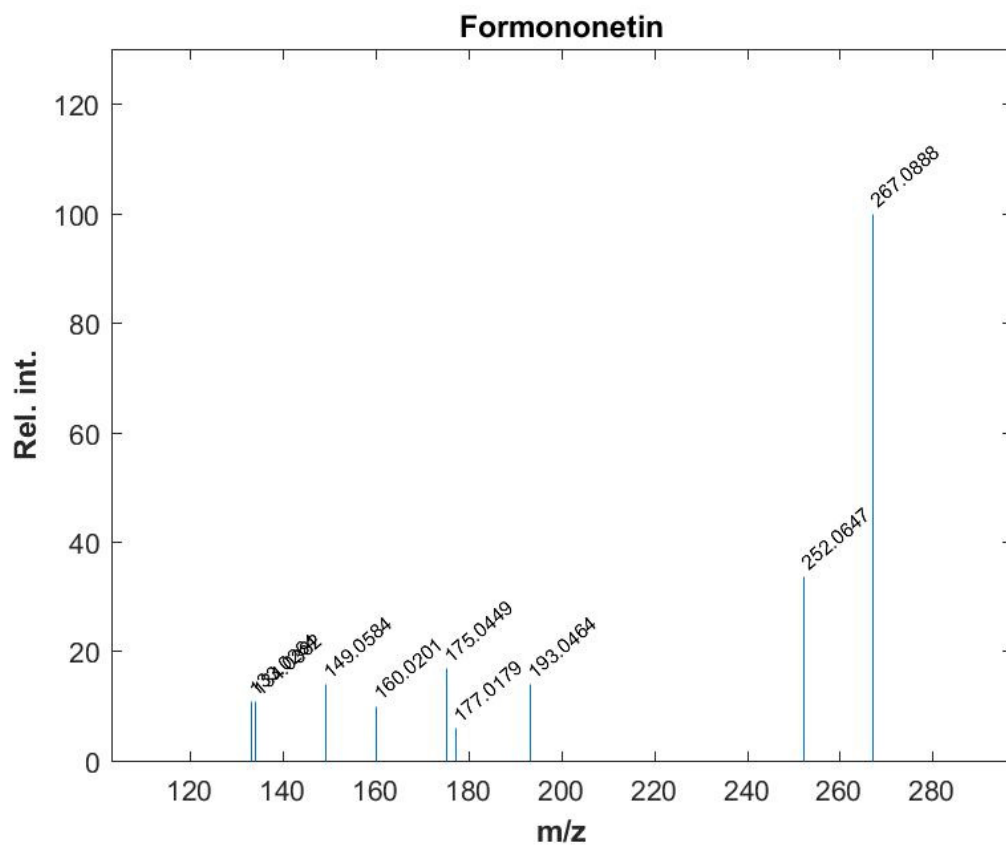


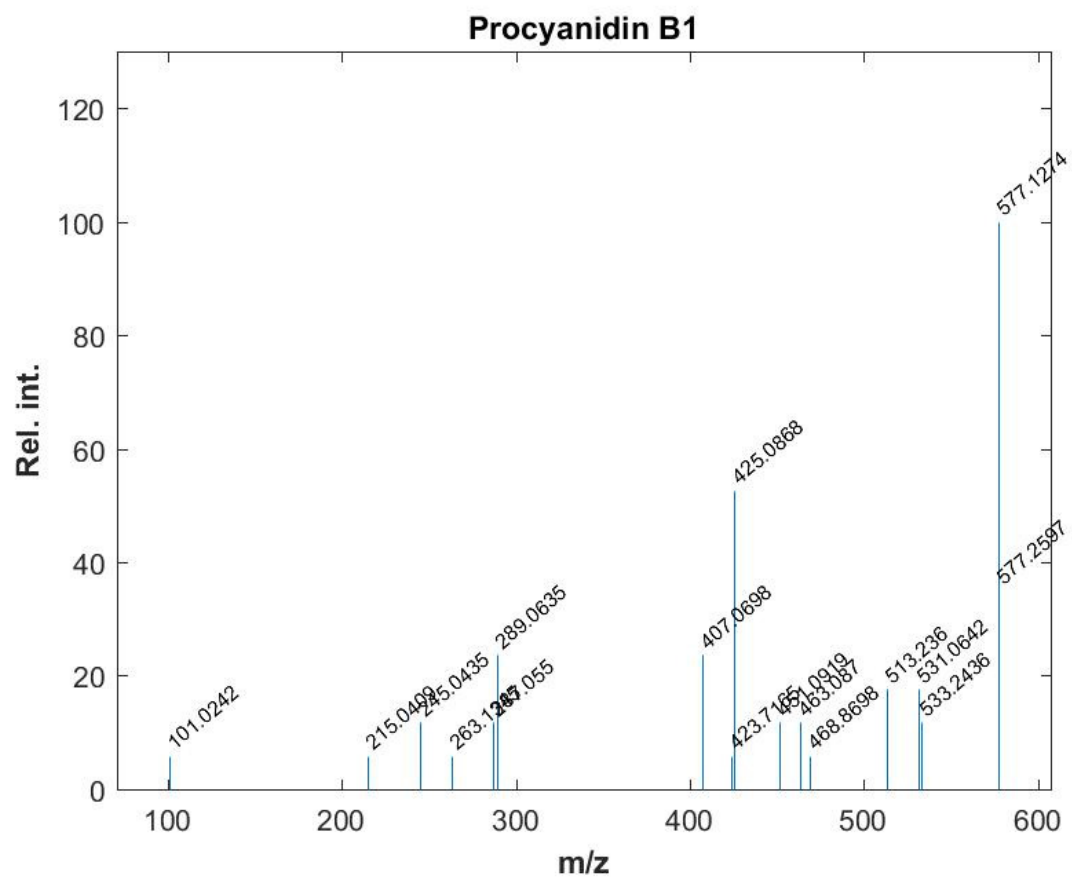


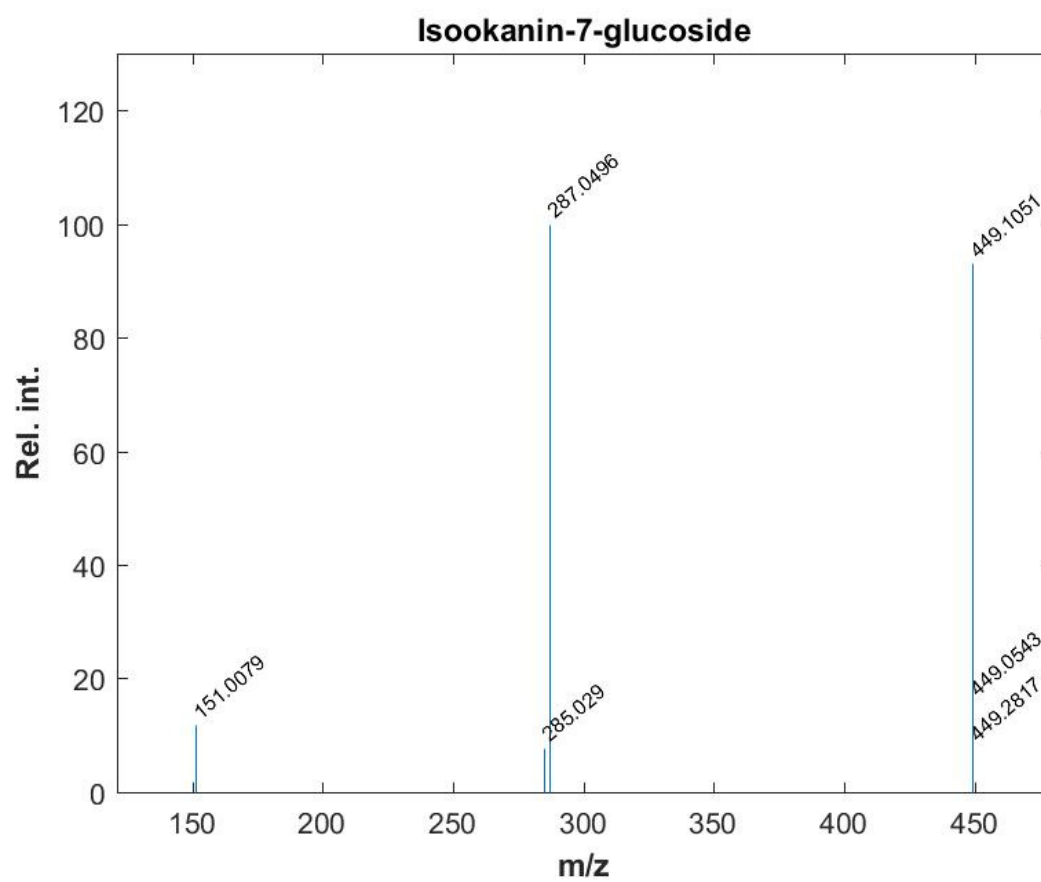
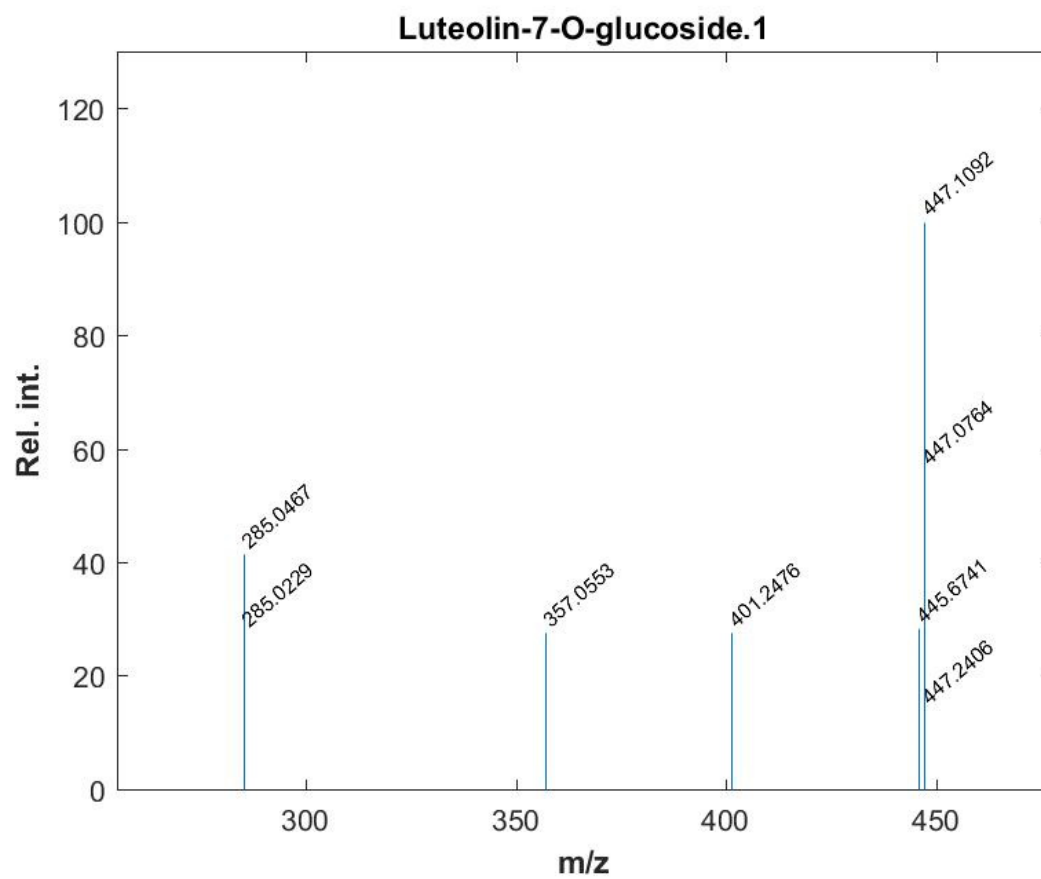
Naringenin-7-O-glucoside

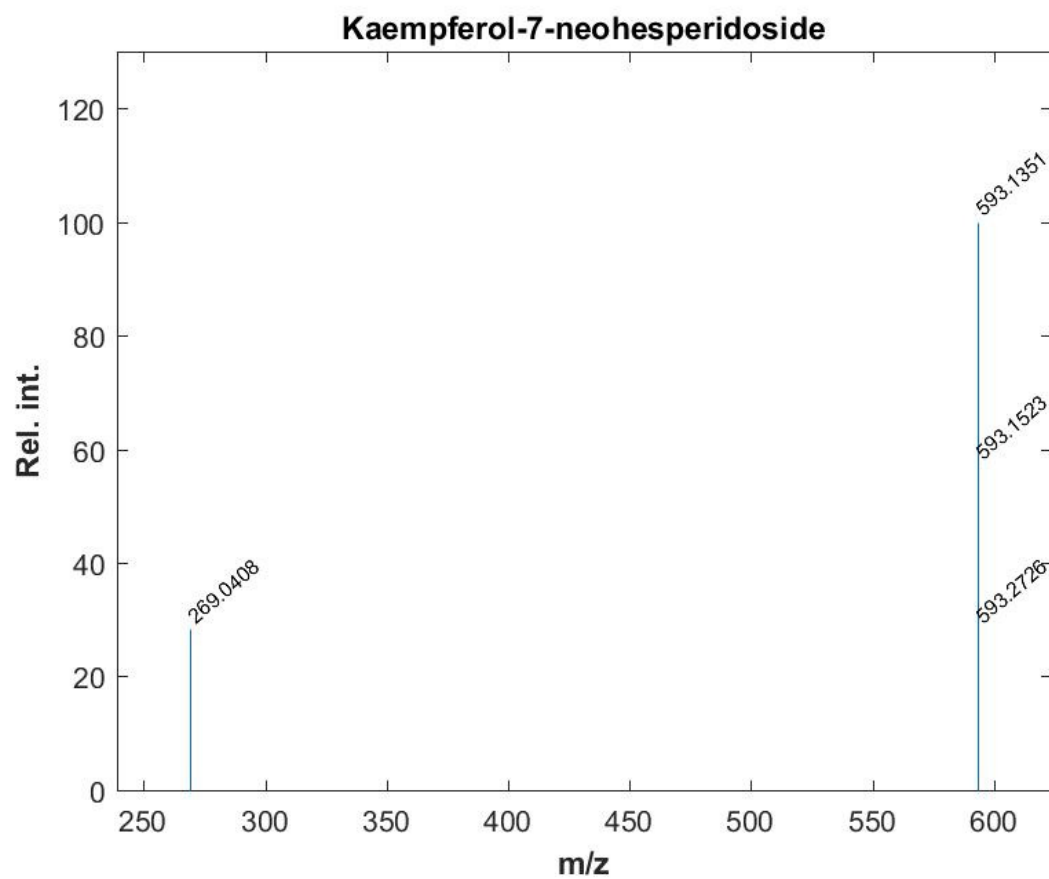
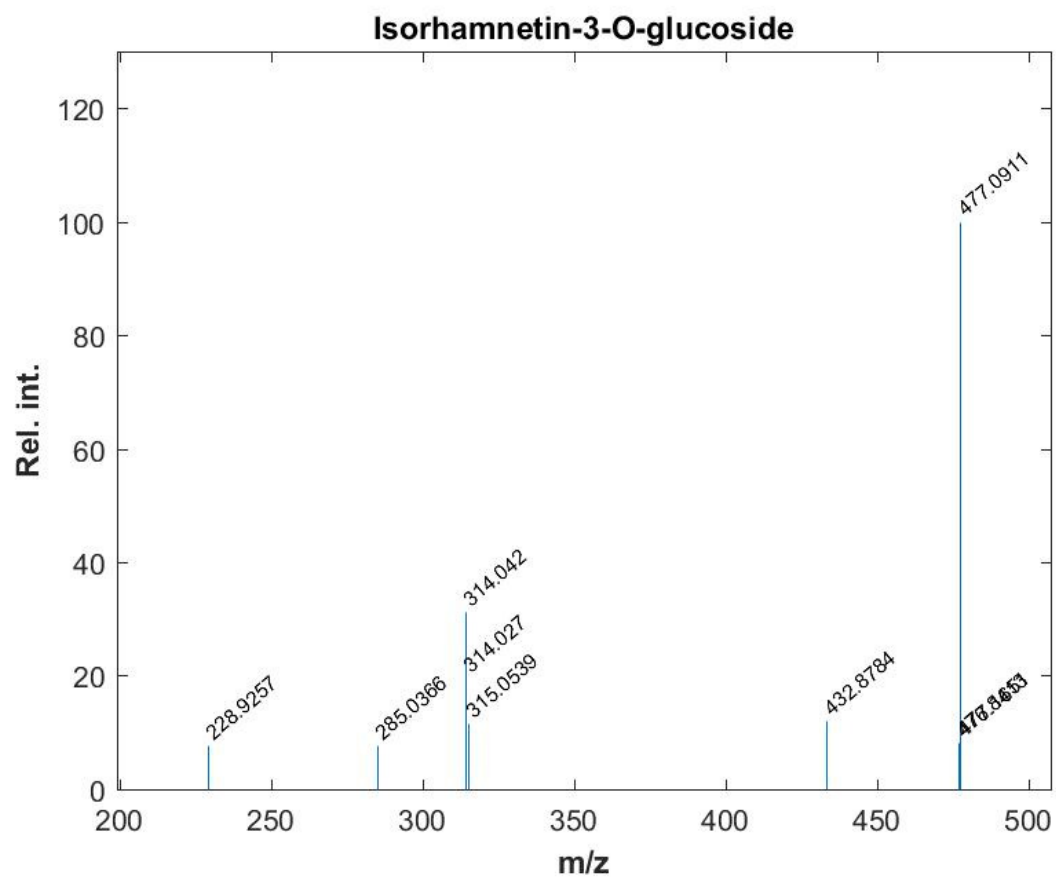


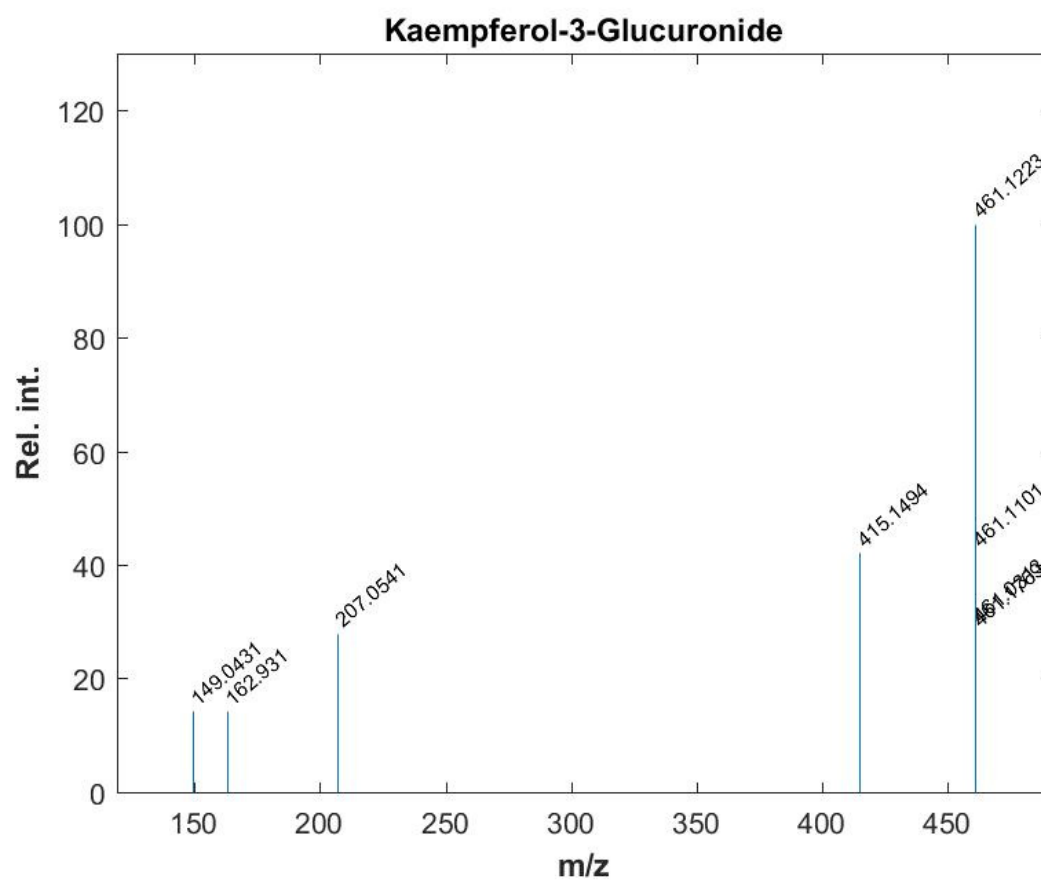
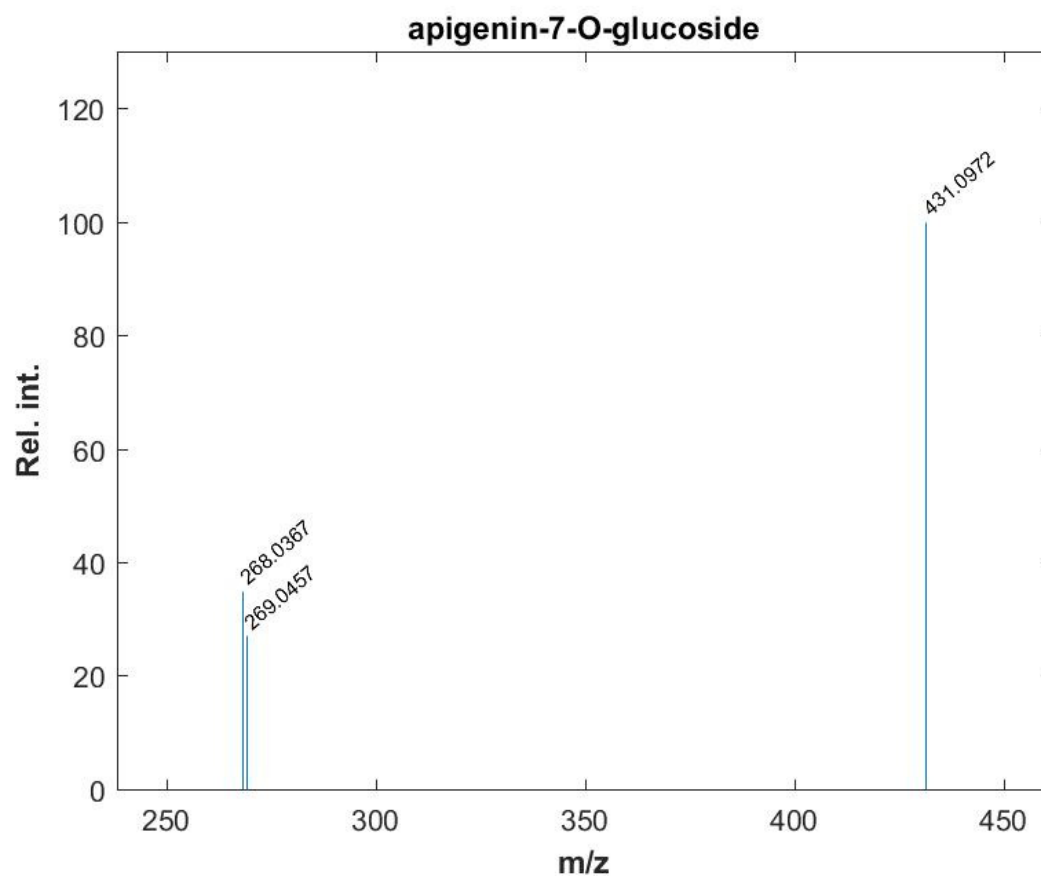




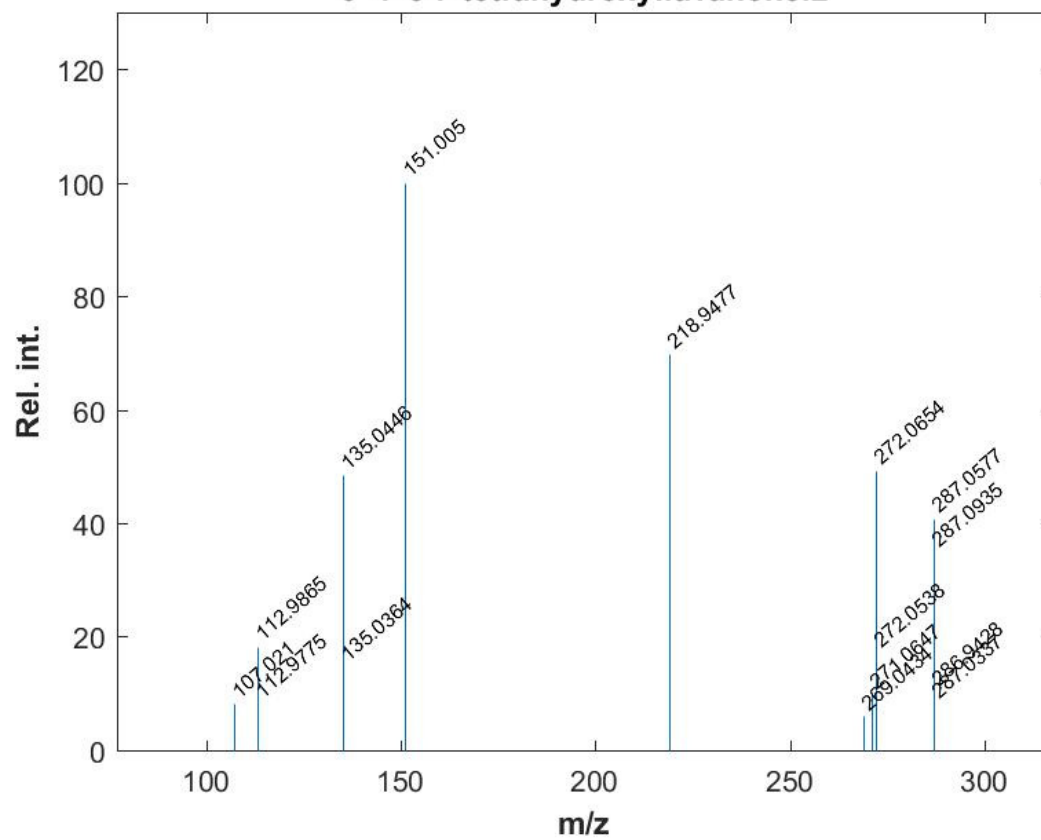


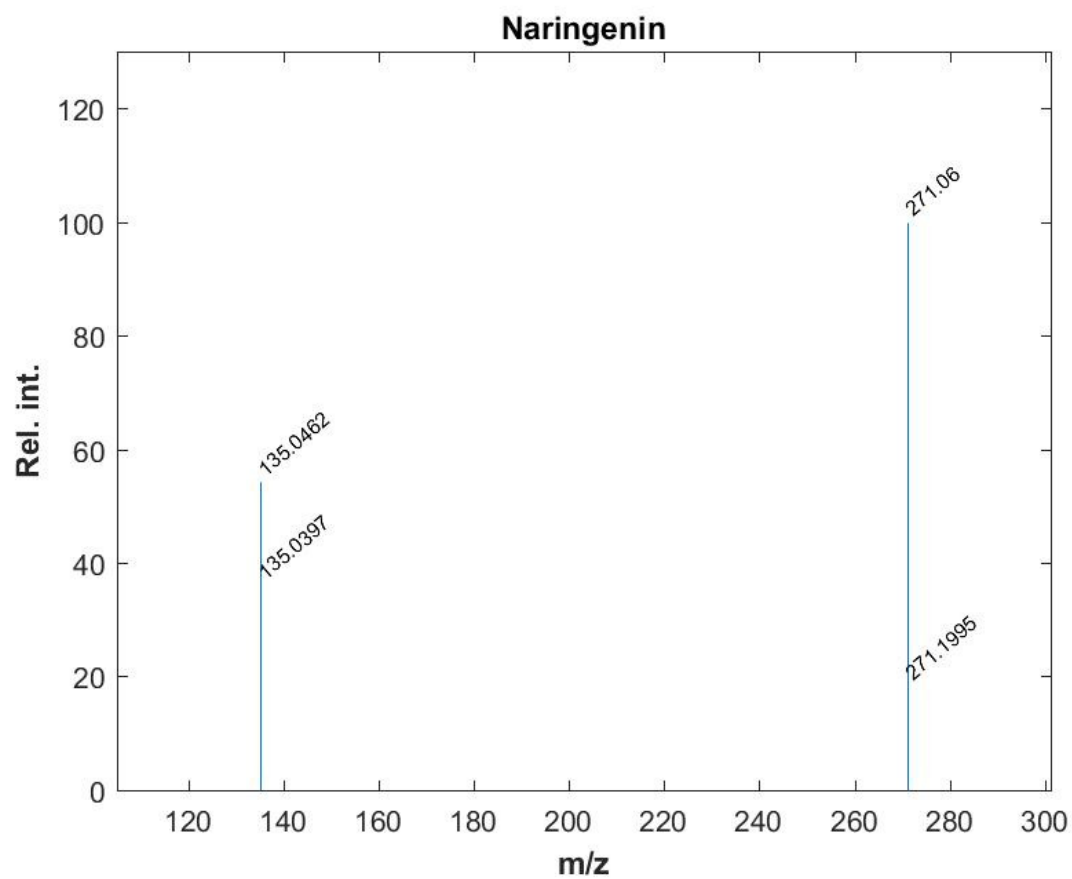
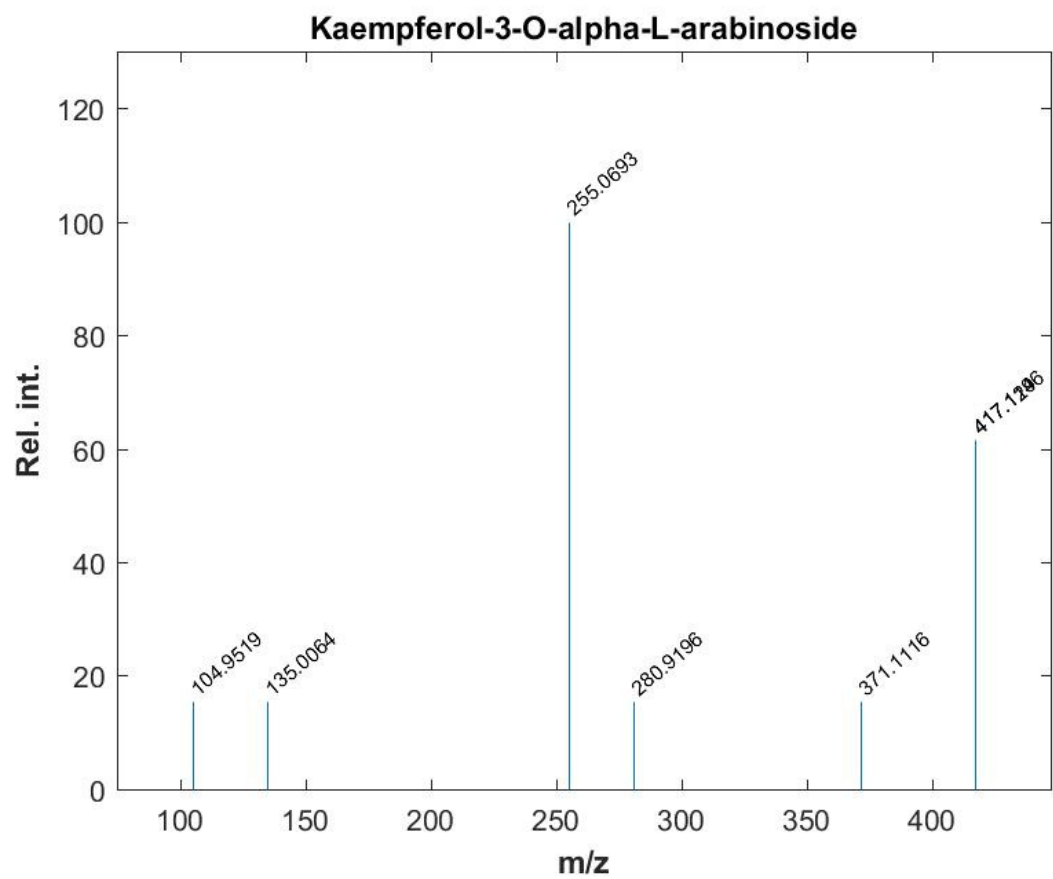


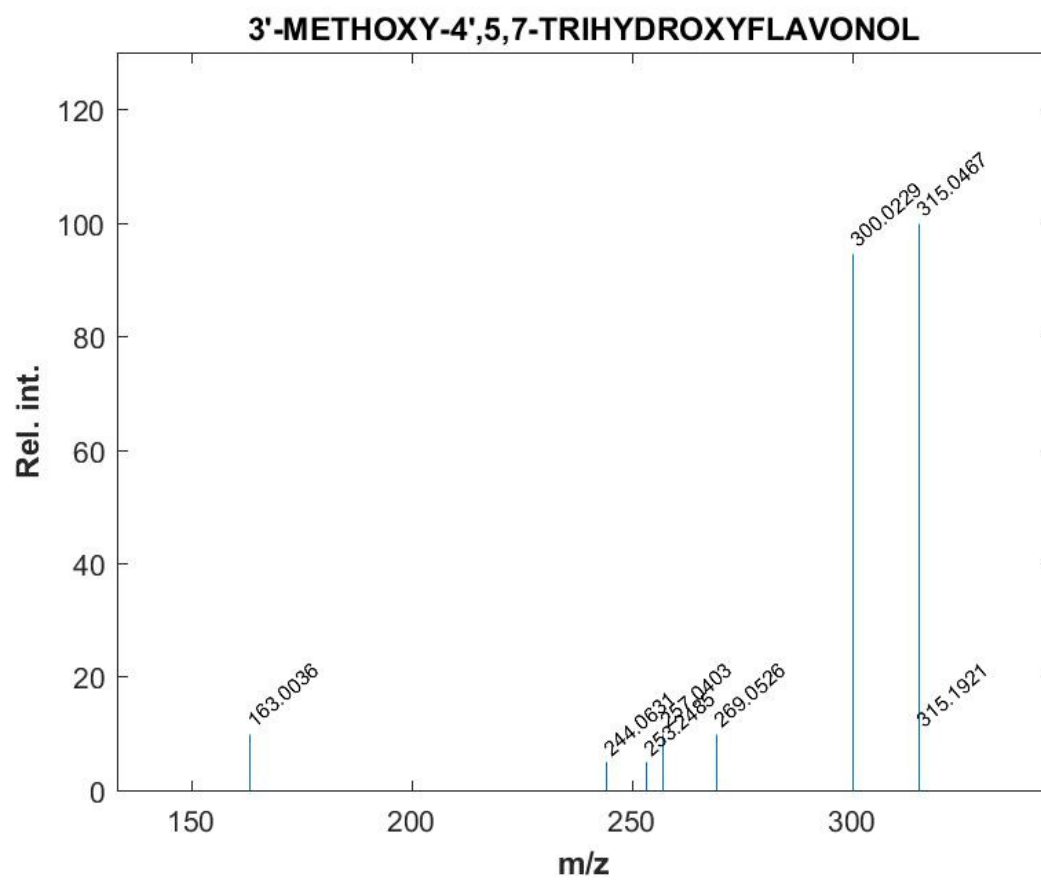


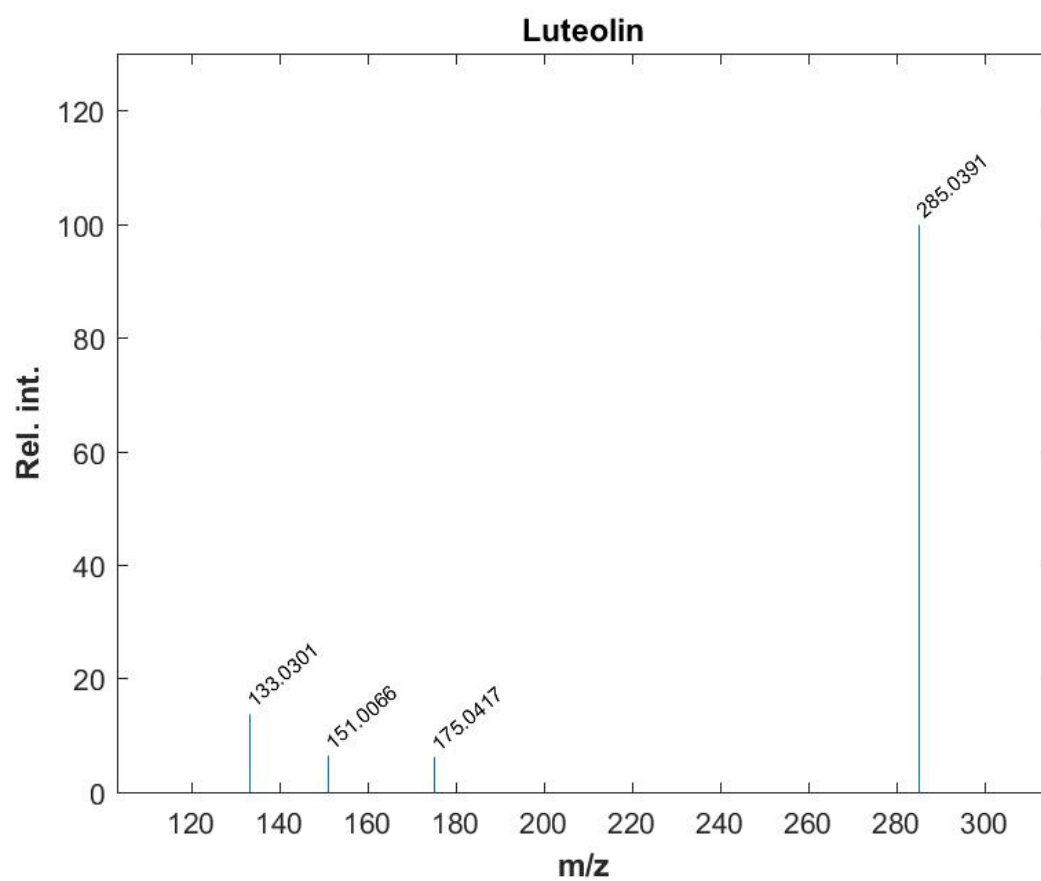
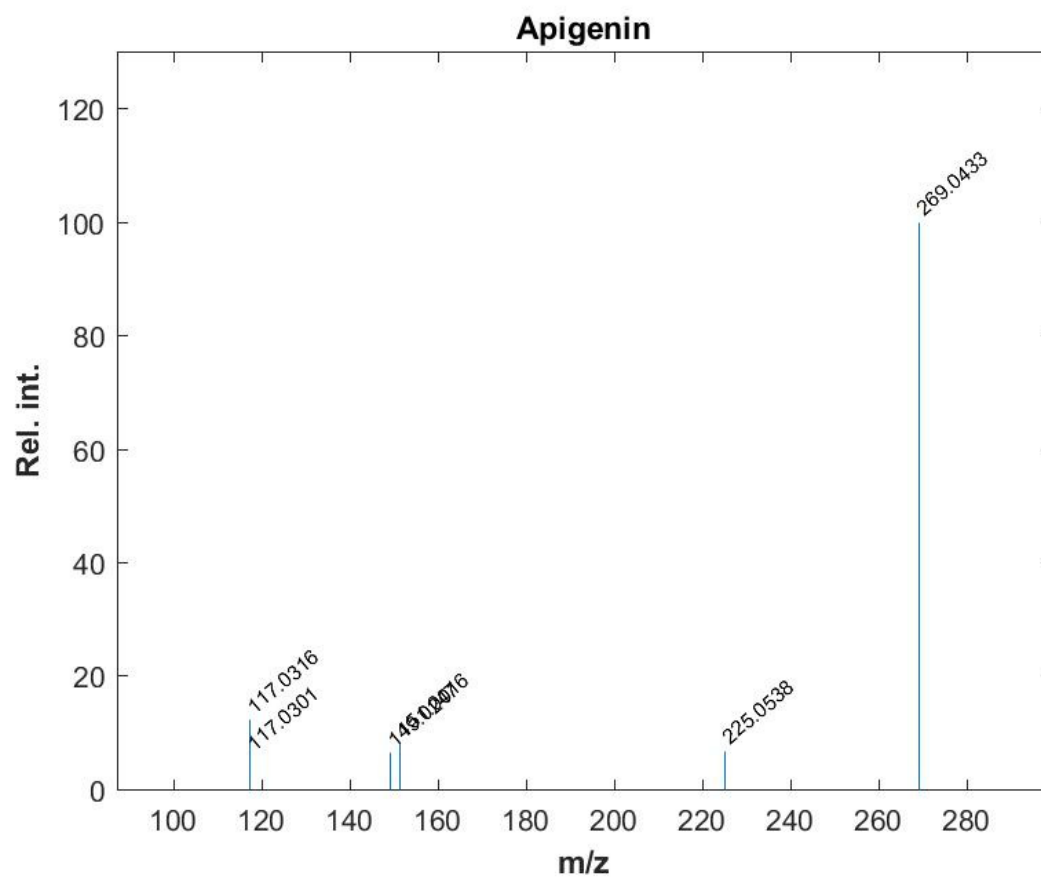


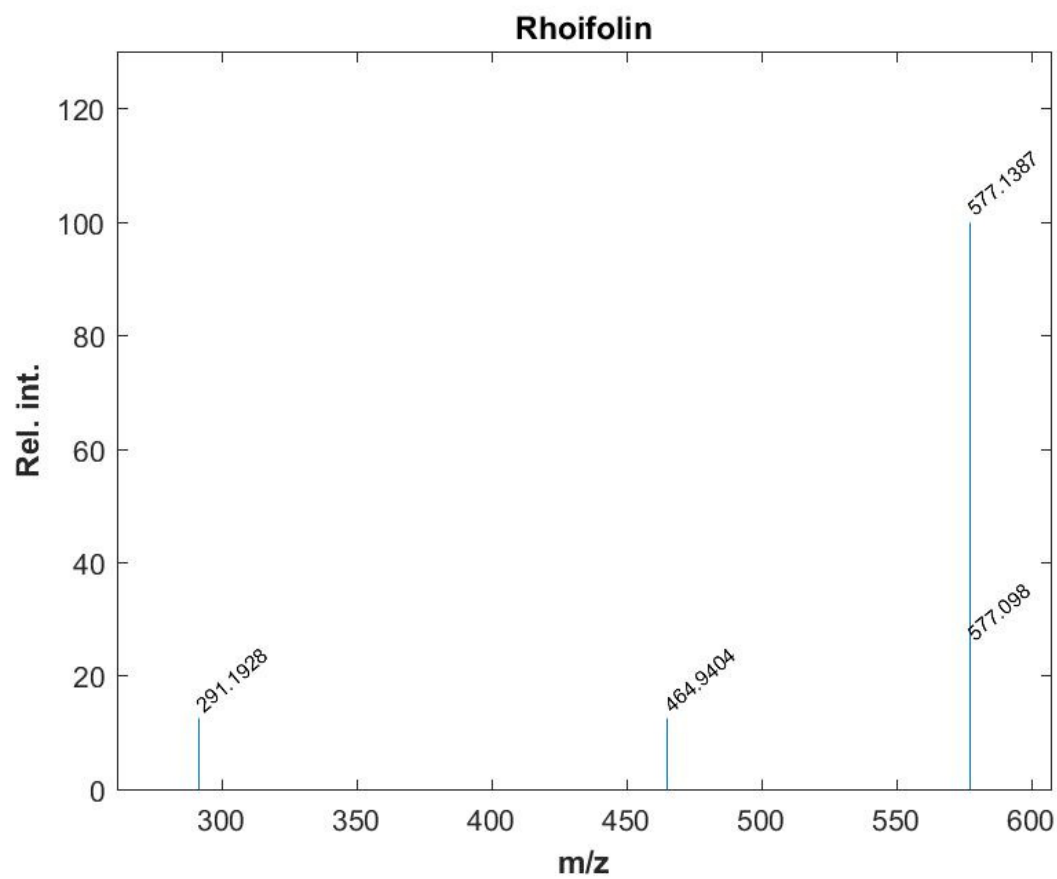
3' 4' 5 7-tetrahydroxyflavanone.2

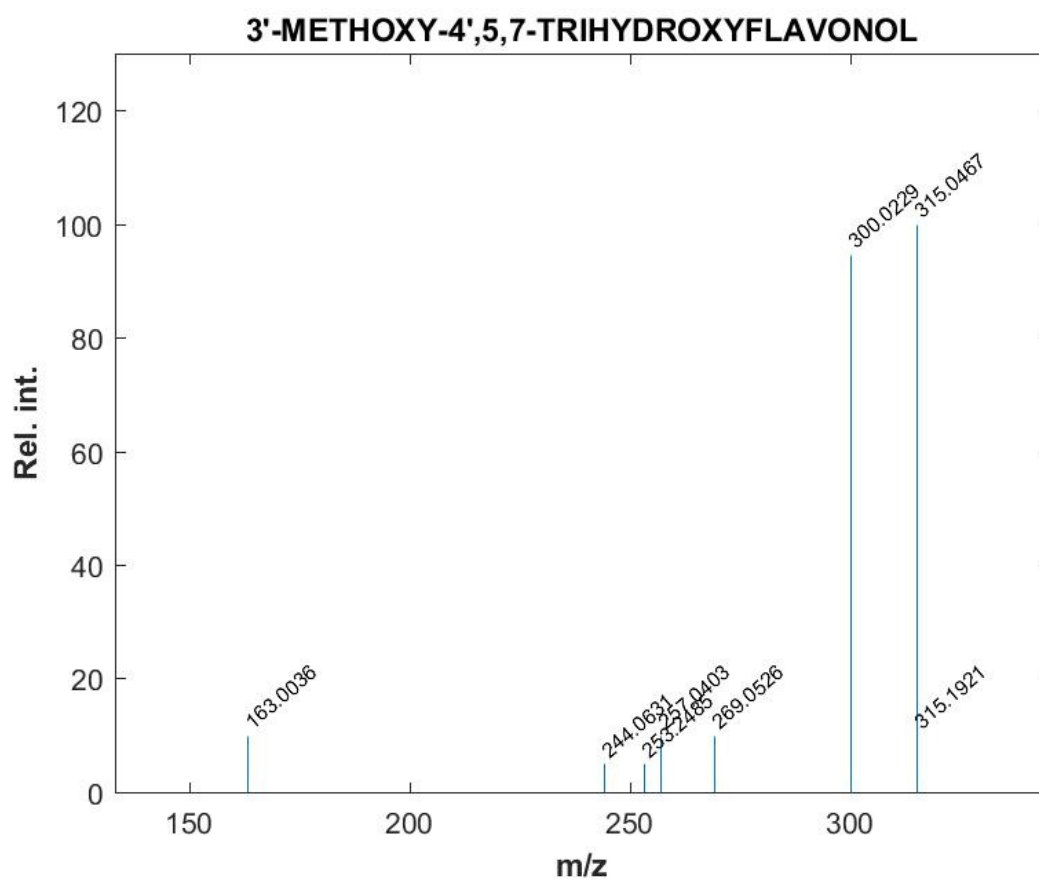
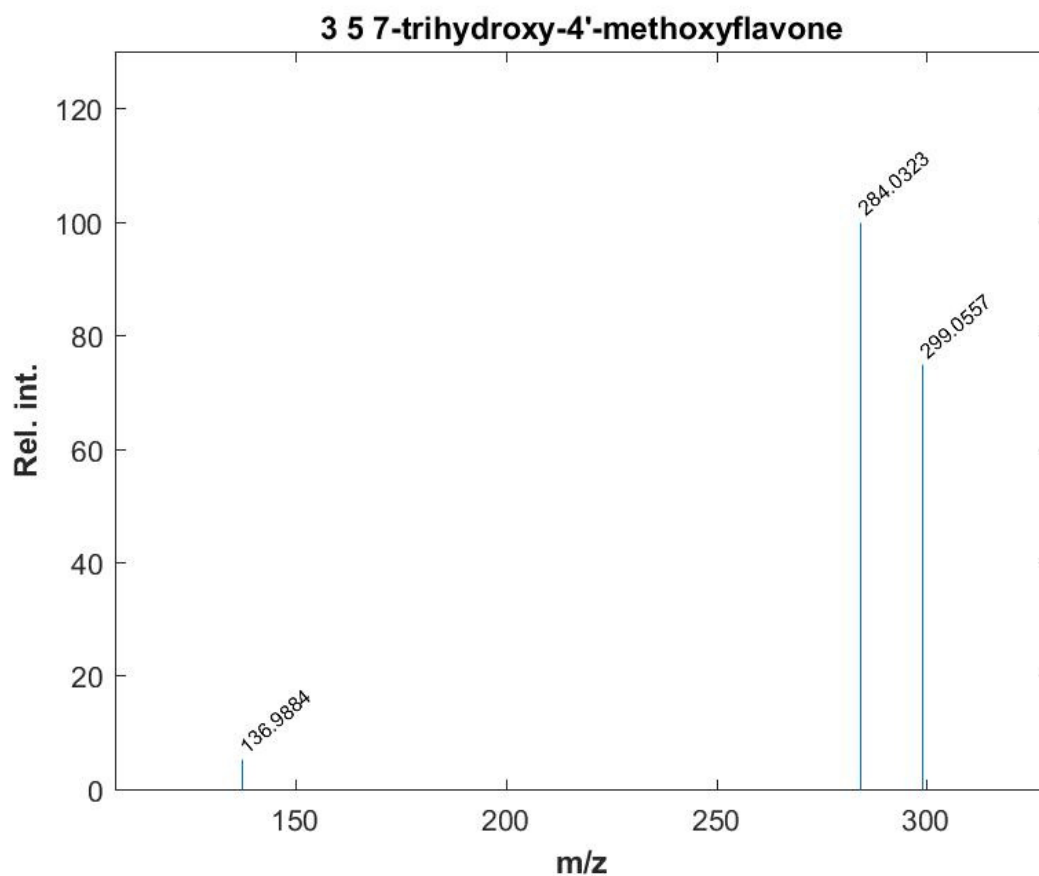


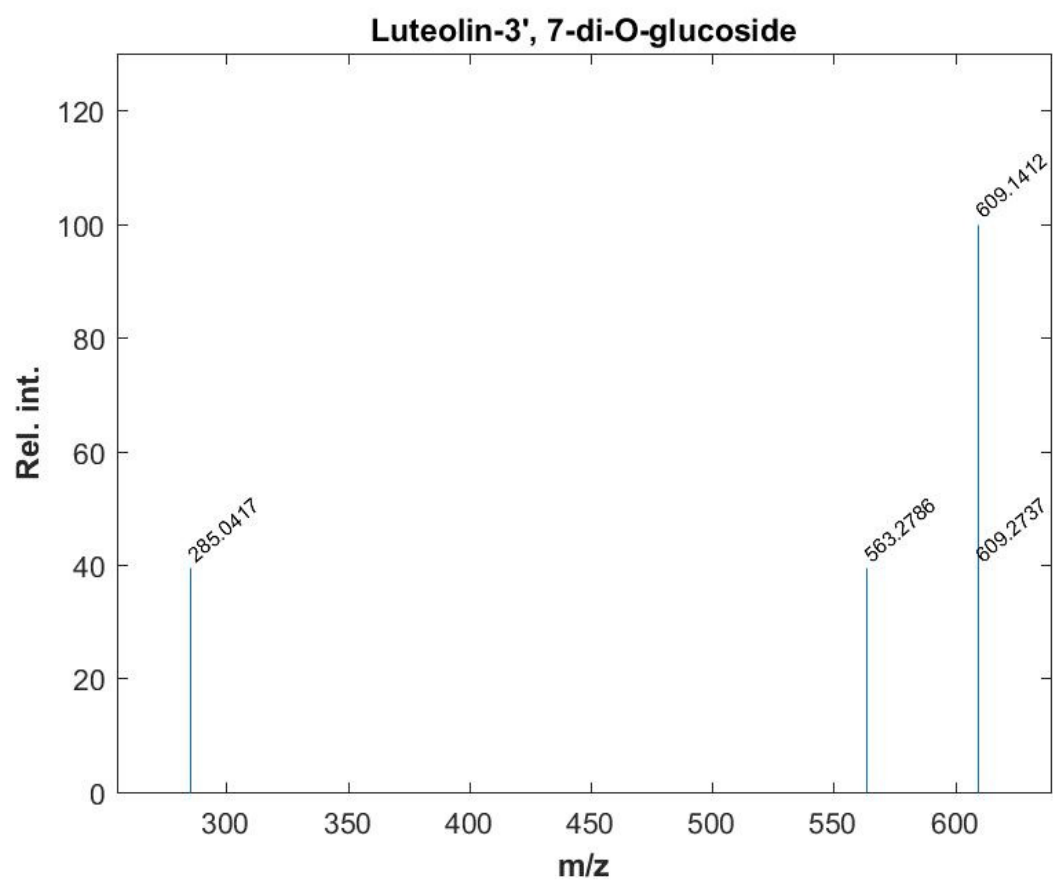
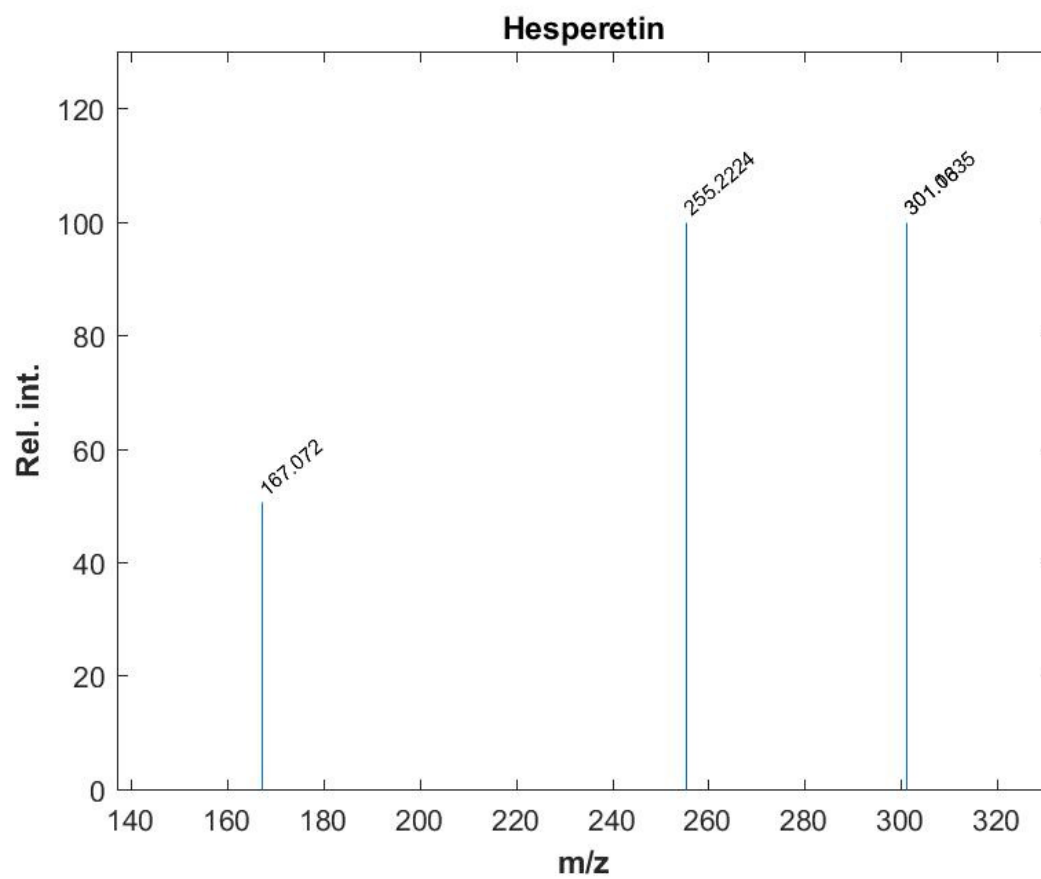












3-Hydroxy-3-Methylglutaric acid

