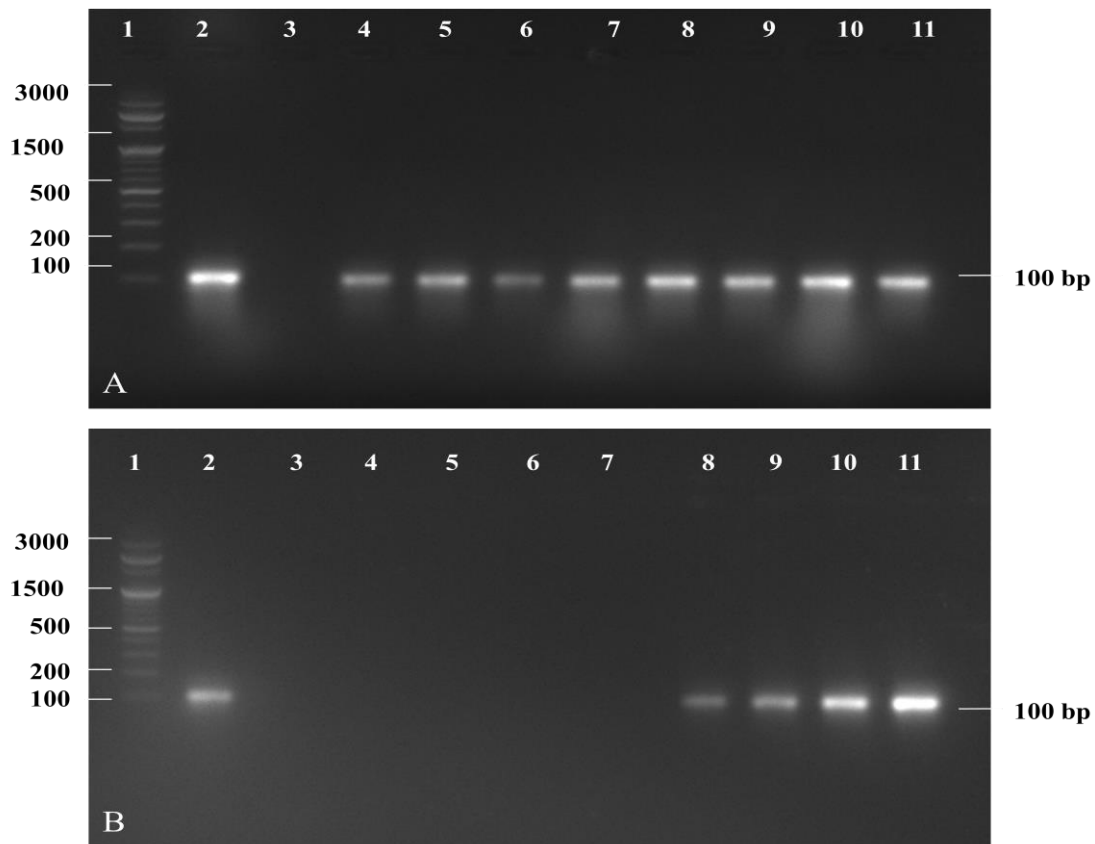


Figure S1 A-B: Gel image showing the amplification of ITS gene of *Fusarium oxysporum* R1 in T4 (corm injury + Fox R1).

A) W4-W11 showing the amplification at 1,3,5,10,15,20,25,30 dpi in corm basal plate and W2 is the positive control (*Fusarium oxysporum* R1 DNA amplified), W3 is the negative control (Corm DNA amplified), W1- 100bp molecular marker

B) W7-W11 showing the amplification in the roots of T4 treatment. At 1,3,5 dpi (W3-W5) no amplification was observed. W2 is the positive control; W3 is the negative control, W1- 100bp molecular marker



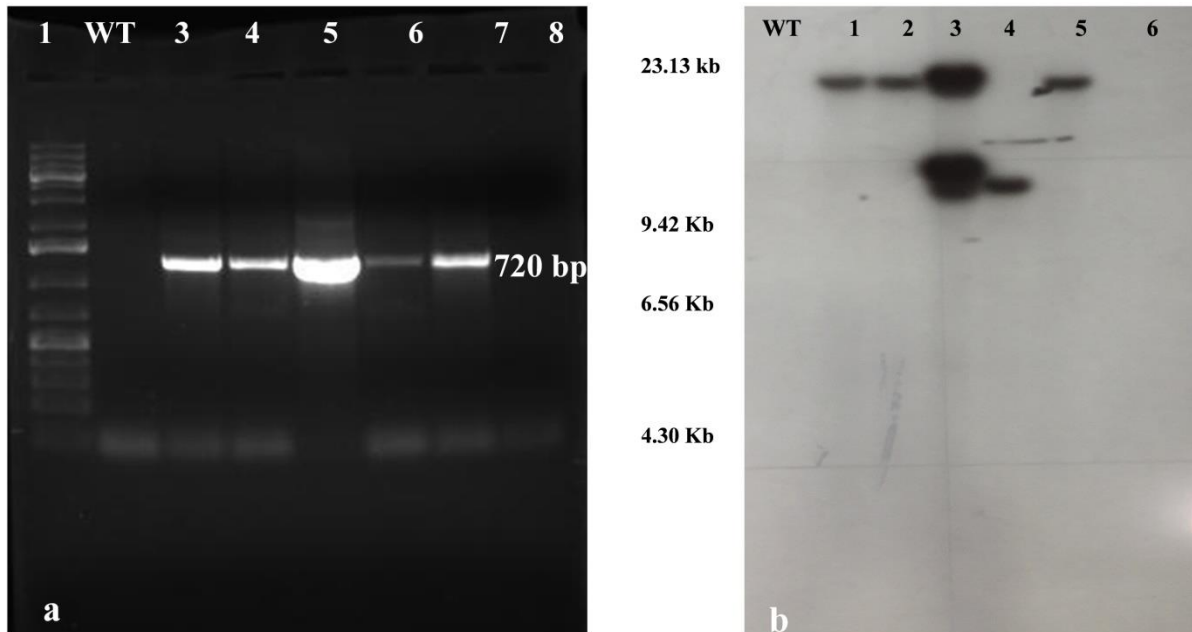


Figure S3: a) Genomic PCR of Fox R1 transformants. W1- 1kb ladder, W2- Wild type, W3 to W8 - transformants

Figure S3b) Southern blot analysis of wild type Fox R1 and randomly selected EGFP tagged Fox R1 transformants.

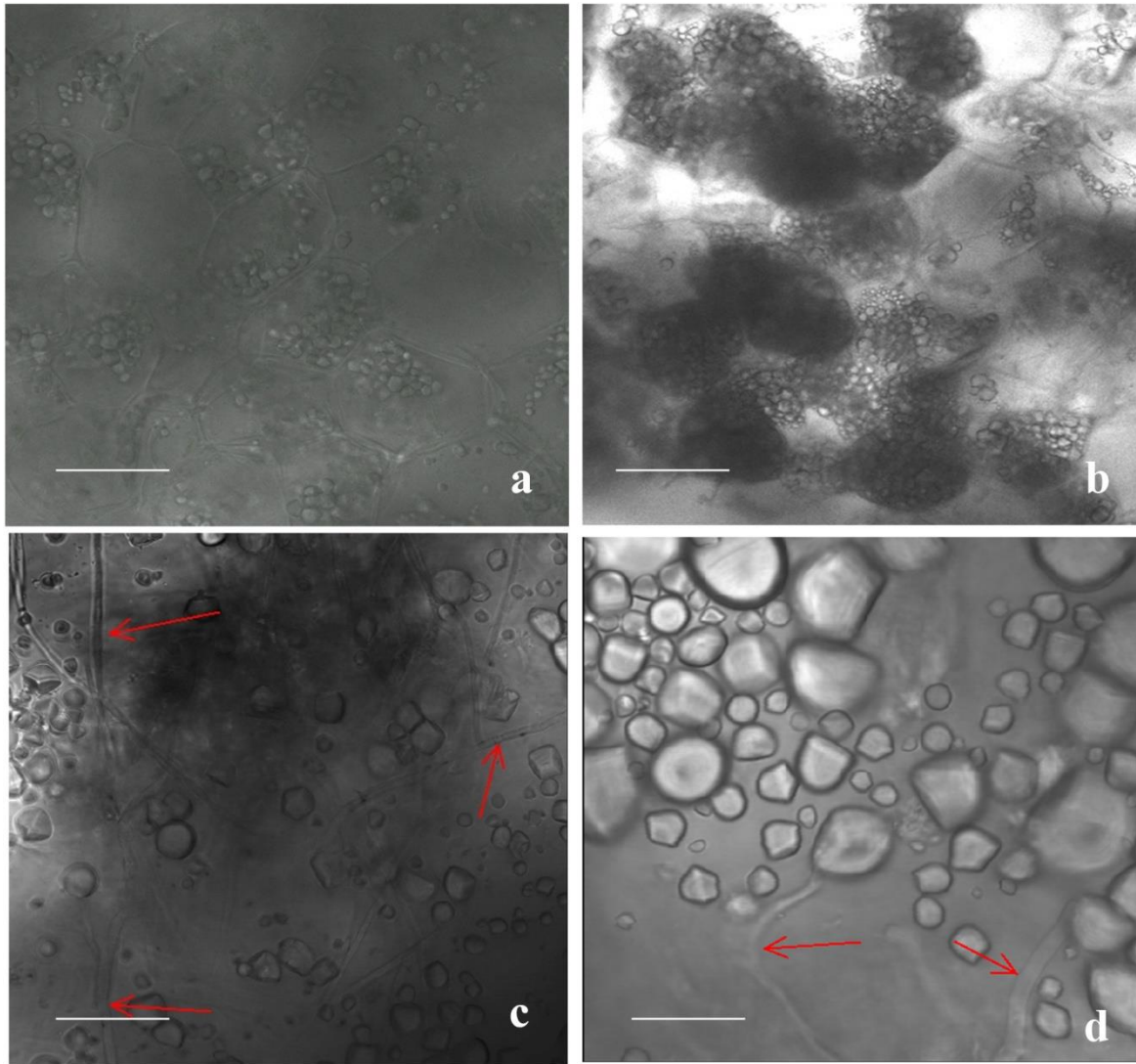


Figure S4: **a, b)** Uninfected corm cells under confocal microscope, cells are clearly visible with start granules inside the cells. **c, d)** infected corm cells with wild type Fox R1. Each bar represents 10 μm