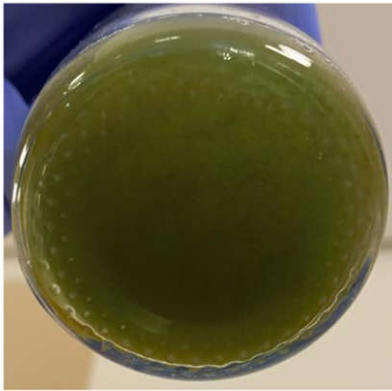


Microalgae harvesting after tertiary wastewater treatment with white-rot fungi

Supplementary Figure S1 (a) *T. obliquus* suspension before bioflocculation; (b) Fungal culture (1) *Irpex lacteus*, (2) *Pleurotus dryinus*, (3) *Pleurotus ostreatus*, (4) *Trametes versicolor*, (5) *Pycnoporus cinnabarinus*, (6) *Trichoderma reesei* in liquid medium before adding to the *T. obliquus* suspension; (c) algal-fungal pellets formed in *T. obliquus*-fungi complex after 24 hours.

1



(a)

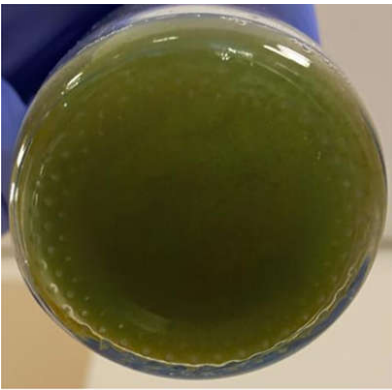


(b)



(c)

2



(a)

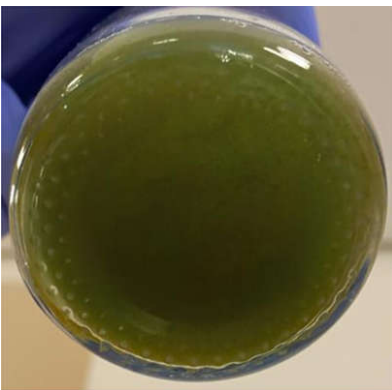


(b)



(c)

3



(a)

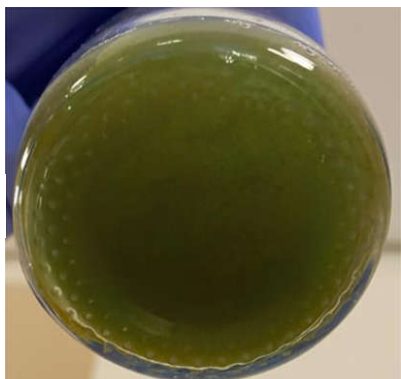


(b)



(c)

4



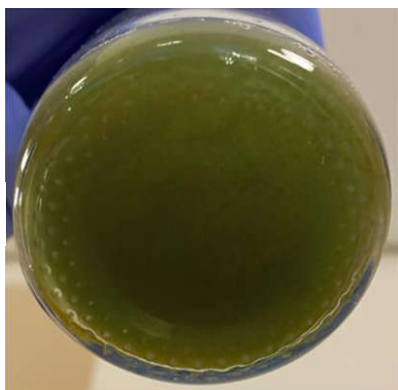
(a)



(b)



5



(a)

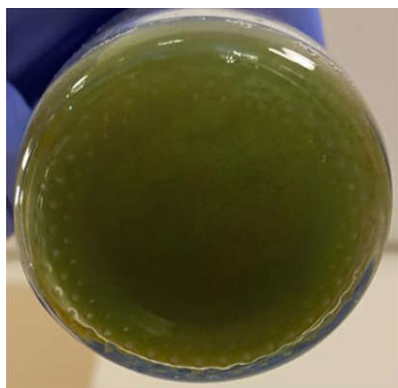


(b)

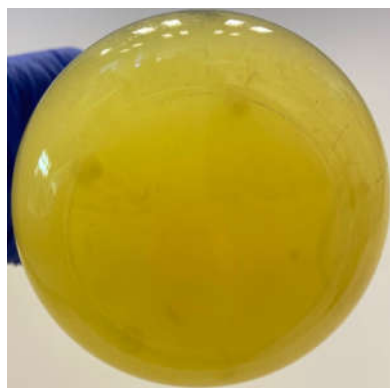


(c)

6



(a)



(b)



(c)