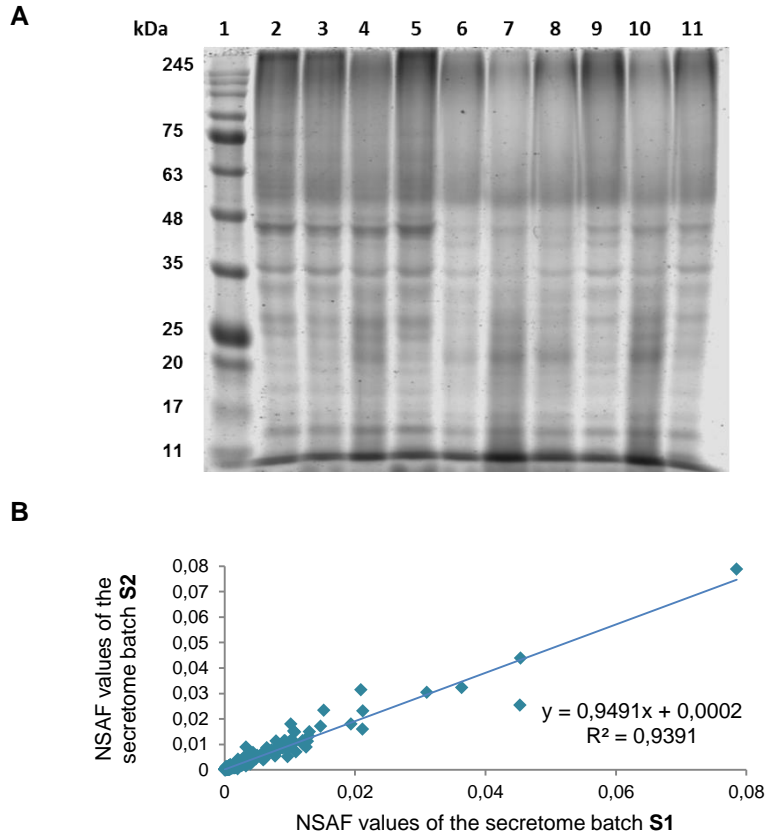
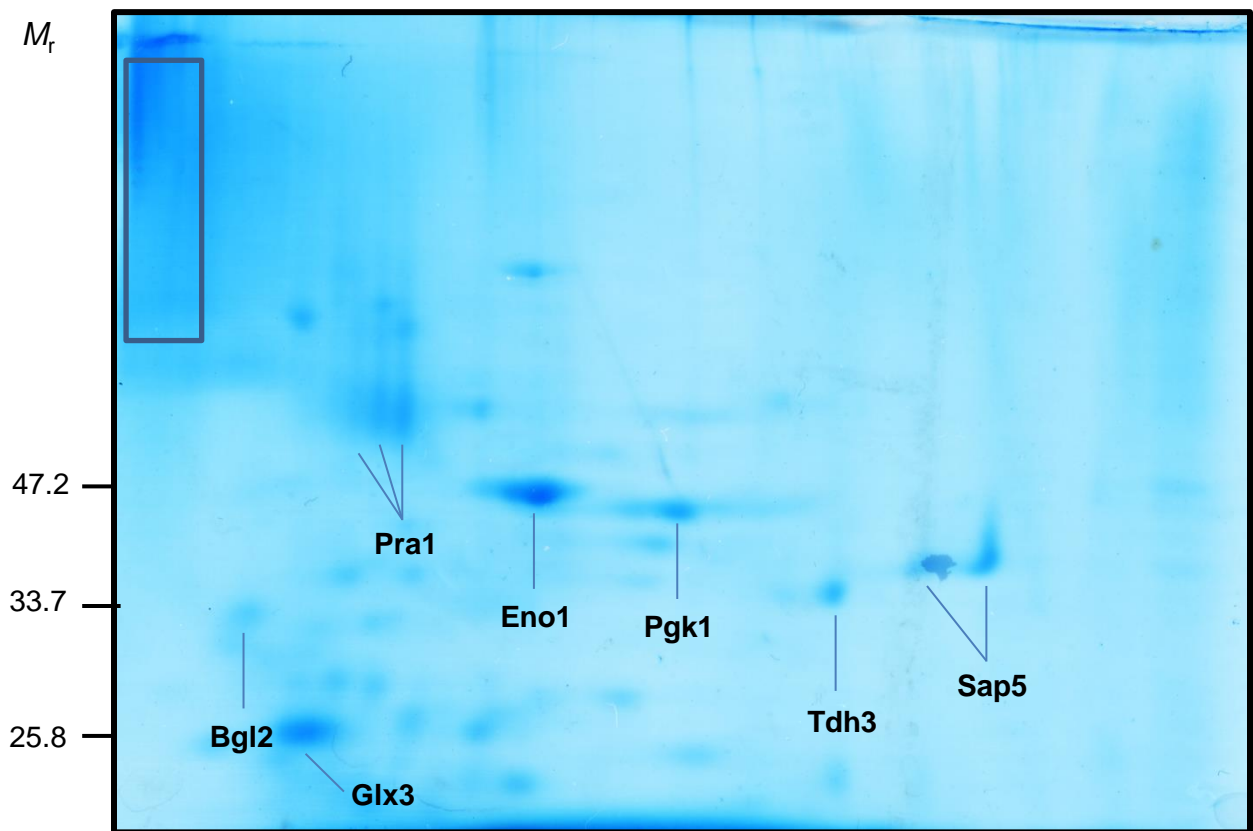


**Figure S1.** Isolation of the *C. albicans* hyphal secretome in two different growth media. **(A)** Morphology and cell lysis evaluation by propidium iodide (PI) measurement (red fluorescence) in salt medium+GlcNac and Lee medium (pH 6.7). **(B)** Silver-stained SDS-PAGE gel of *C. albicans* hyphal secreted proteins extracted from salt medium+GlcNac and Lee medium (pH 6.7). PM, protein marker. **(C)** Comparison of the protein yield and number of proteins identified in salt medium+GlcNac and Lee medium (pH 6.7). Venn diagram shows unique and shared proteins between both media. **(D)** Representative fluorescence images from cell lysis measured by PI staining in *C. albicans* hyphal secretome extraction in Lee medium (pH 6.7) after reducing shaking conditions of cell growth and removing the centrifugation break .



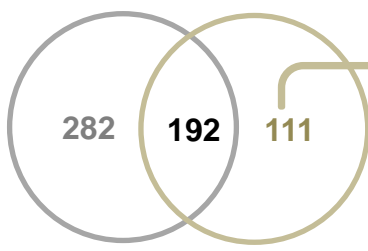
**Figure S2.** *C. albicans* hyphal secretome samples isolated in Lee medium (pH 6.7). **(A)** Coomassie blue-stained SDS-PAGE gel of the 10 *C. albicans* hyphal secretome samples. An amount of 10 µg of protein from each extraction was loaded in a 10% SDS-PAGE gel. *Lane 1*, protein marker; *lanes 2-11*, different hyphal secretome samples extracted from 18 h culture of *C. albicans* cells in Lee medium (pH 6.7). **(B)** Correlation of NSAF values of the proteins identified in the two secretome batches (S1 and S2) with at least two peptides by the gel-free LC-MS/MS analysis.



**Figure S3.** Coomassie blue-stained preparative 2-DE gel of the *C. albicans* hyphal secretome. Preparative gel was used for MALDI-TOF-MS identification. The seven immunoreactive proteins are labeled. The upper-left zone cut for protein identification is depicted with a rectangle.

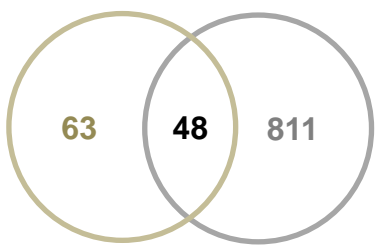
**A**

Secreted proteins described in [33, 67, 71]      Secreted proteins described here



**B**

Secreted proteins described here      Secreted proteins described in [43]



**Figure S4.** Schematic Venn diagrams comparing *C. albicans* secreted proteins described here and in other studies. **(A)** Comparison between proteins identified in hyphal secretomes here and in previously studies [33, 67, 71]. **(B)** Comparison between proteins identified here and not in the previous studies (111 proteins) with proteins in EVs from hyphal cells [43].