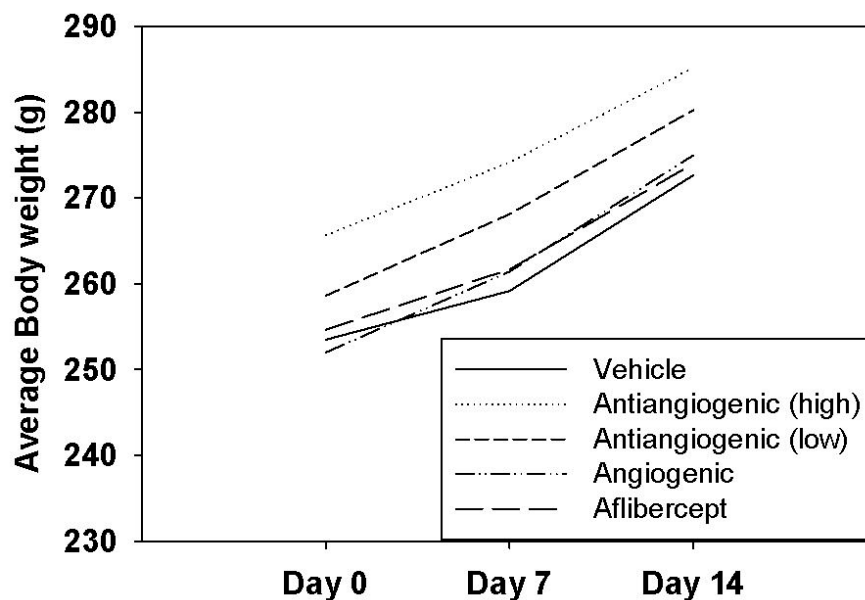
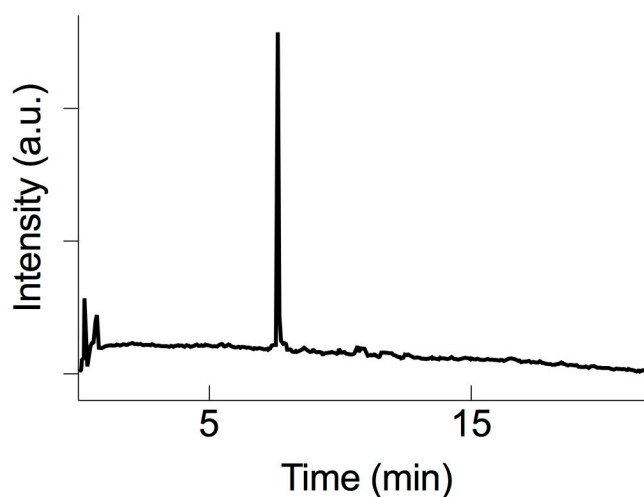


Supplementary Materials

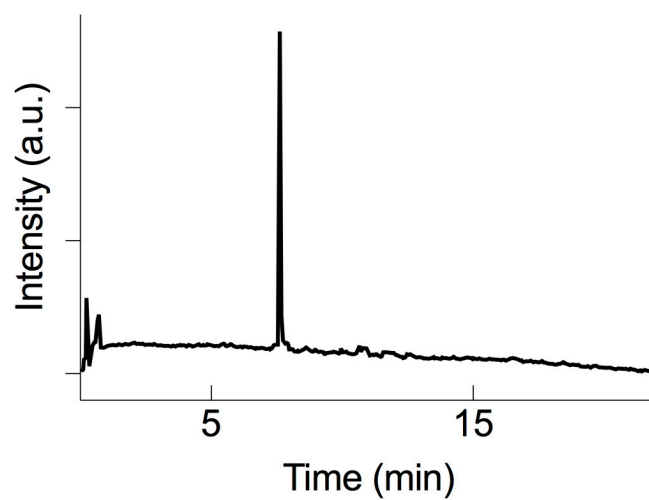
The supplementary material contains HPLC traces for the pro- and anti-angiogenic peptides, as well as body weight changes between experimental groups.



Supplemental Figure 1. Body weight changes between experimental groups. No effect of treatment ($P = 0.542$) on body weight among experimental groups: vehicle, anti-angiogenic peptide hydrogel (high), anti-angiogenic peptide hydrogel (low), pro-angiogenic peptide hydrogel, and Aflibercept. No significant effects of treatment on body weight were found through Two-Way Repeated Measures ANOVA comparison.



Supplemental Figure 2. High Performance Liquid Chromatography (HPLC) UV trace for pro-angiogenic peptide, monitored at 280 nm.



Supplemental Figure 3. High Performance Liquid Chromatography (HPLC) UV trace for anti-angiogenic peptide, monitored at 280 nm.