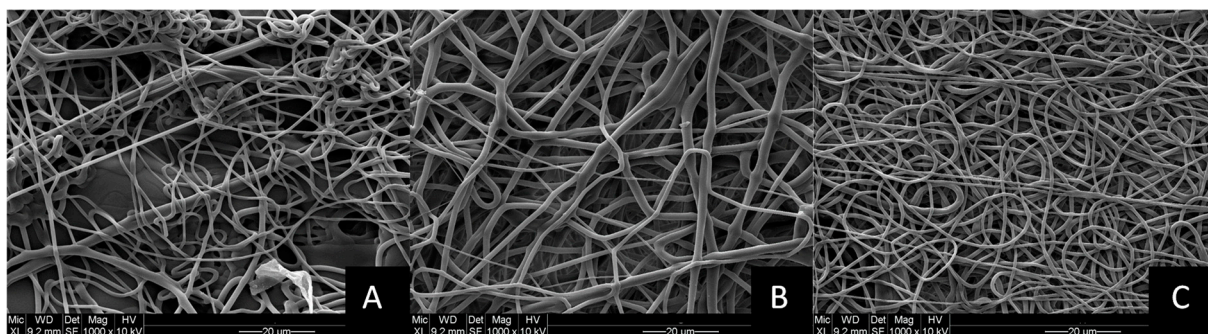
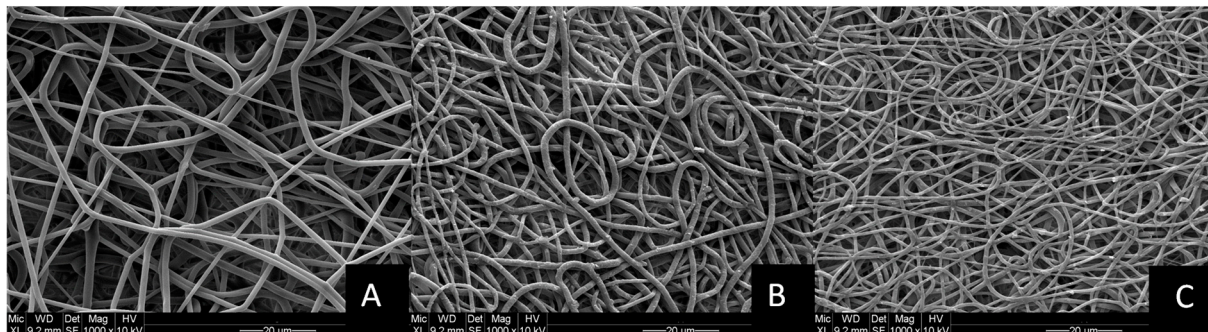


Sup. Figure S1. Effect of voltage on the e-spun fiber mat PCU concentration: 8 wt %; Distance to collector: 10 cm; A: 24 kV Fiber diameter 1.17 ± 0.49 , pore size 5.31 ± 0.10 ; B: 26 kV fiber diameter 1.41 ± 0.54 , pore size: 4.64 ± 0.48 ; C: 28 kV fiber diameter 1.62 ± 0.60 , pore size: 4.73 ± 0.29 ; Fiber diameter and pore size are measured in [μm]



Sup. Figure S2. Effect of distance to collector on the e-spun fiber mat PCU concentration: 8 wt %; Voltage: 26 kV; A: 5 cm, Fiber diameter 1.76 ± 0.85 , pore size 4.07 ± 0.59 ; B: 10 cm, fiber diameter 1.41 ± 0.54 , pore size: 4.64 ± 0.48 ; C: 15 cm, fiber diameter 0.99 ± 0.32 , pore size: 3.48 ± 0.24 ; Fiber diameter and pore size are measured in [μm]



Sup. Figure S3. Effect of PCU concentration on the e-spun fiber mat distance to collector: 10 cm; Voltage: 26 kV; A: 8 wt%, Fiber diameter 1.50 ± 0.44 , pore size 4.50 ± 0.37 ; B: 10 wt %, fiber diameter 1.47 ± 0.55 , pore size: 3.86 ± 0.51 ; C: 12 wt%, fiber diameter 0.97 ± 0.35 , pore size: 3.15 ± 0.06 ; Fiber diameter and pore size are measured in [μm]