

Evaluation of the Effect of Photodynamic Therapy on CAM-Grown Sarcomas

Maximilian Kerkhoff ^{1,2,3,*}, Susanne Grunewald ^{2,3,4}, Christiane Schaefer ^{1,2,3}, Stefan K. Zöllner ^{1,2,3}, Pauline Plaumann ^{1,2,3}, Maike Busch ^{2,3,5}, Nicole Dünker ^{2,3,5}, Julia Ketzer ^{2,3,4}, Josephine Kersting ^{1,2,3}, Sebastian Bauer ^{2,3,4}, Jendrik Harges ^{2,3,6}, Arne Streitbürger ^{2,3,6}, Uta Dirksen ^{1,2,3}, Wolfgang Hartmann ⁷ and Wiebke K. Guder ^{2,3,6}

¹ Pediatrics III, University Hospital Essen, West German Cancer Center, 45147 Essen, Germany; christiane.schaefer2@uk-essen.de (C.S.); stefan.zoellner@uk-essen.de (S.K.Z.); pauline.plaumann@uk-essen.de (P.P.); josephine.kersting@uk-essen.de (J.K.); uta.dirksen@uk-essen.de (U.D.)

² German Cancer Consortium (DKTK), Essen/Düsseldorf, University Hospital Essen, 45147 Essen, Germany; susanne.grunewald@uk-essen.de (S.G.); maike.busch@uk-essen.de (M.B.); nicole.duenker@uk-essen.de (N.D.); julia.ketzer@uk-essen.de (J.K.); sebastian.bauer@uk-essen.de (S.B.); jendrik.harges@uk-essen.de (J.H.); arne.streitbuenger@uk-essen.de (A.S.); wiebke.guder@uk-essen.de (W.K.G.)

³ University Duisburg-Essen, 45141 Essen, Germany

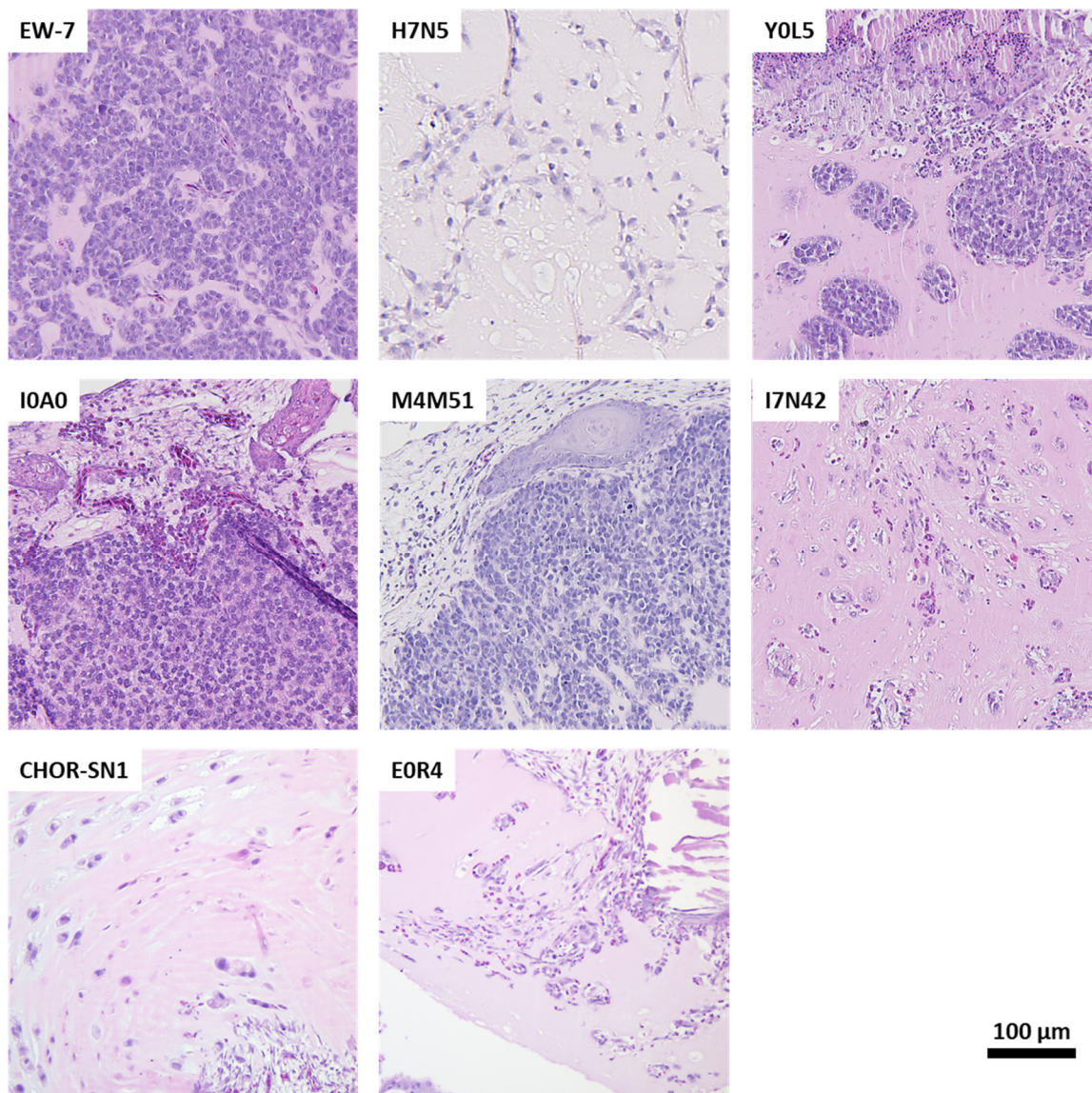
⁴ West German Cancer Center, University Hospital Essen, 45147 Essen, Germany

⁵ Department of Neuroanatomy, Institute for Anatomy II, University of Duisburg Essen, University Medicine Essen, Essen, Germany

⁶ Department of Orthopedic Oncology, University Hospital Essen, 45147 Essen, Germany

⁷ Division of Translational Pathology, Gerhard-Domagk-Institute of Pathology, University Hospital Muenster, 48149 Muenster, Germany; wolfgang.hartmann@ukmuenster.de

* Correspondence: maximilian.kerkhoff@uk-essen.de



Supplementary Figure S1. Histopathology of CDX tumors. A) Histopathology of untreated CDX tumors of different sarcoma subtypes. Addition to Figure 3. Ewing Sarcoma: EW-7, Y0L5, I0A0, M4M51; Chondrosarcoma: H7N5; DSRCT: I7N42; Chordoma: CHOR-SN1; Giant Cell Tumor of Bone: E0R4.