

Figure S1 Standardised precipitation index over different time periods (1, 3, 6, 12, 24 and 48 months) for Donji Miholjac meteorological station

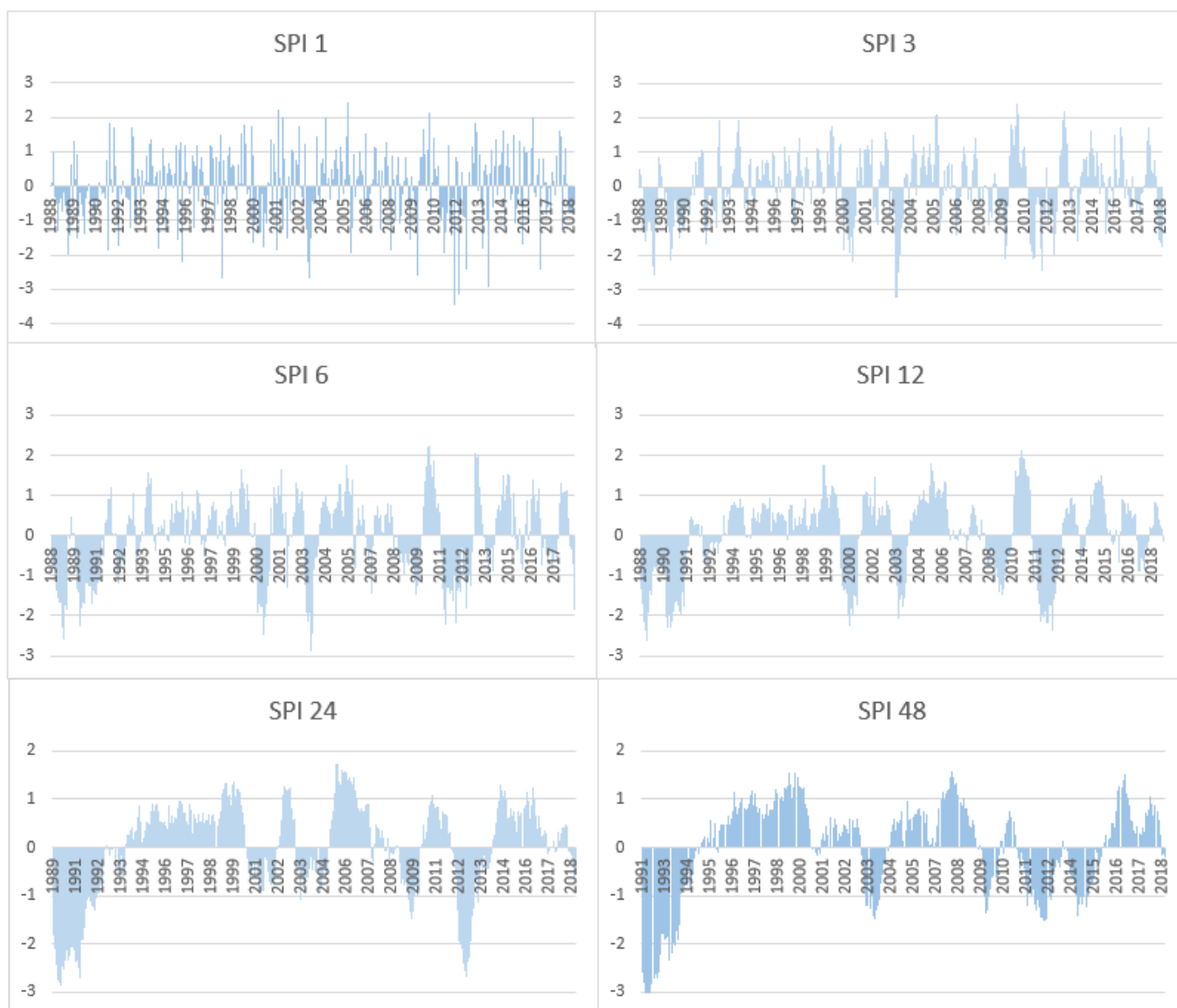


Figure S2 Standardised precipitation evapotranspiration index over different time periods (1, 3, 6, 12, 24 and 48 months) for Donji Miholjac meteorological station

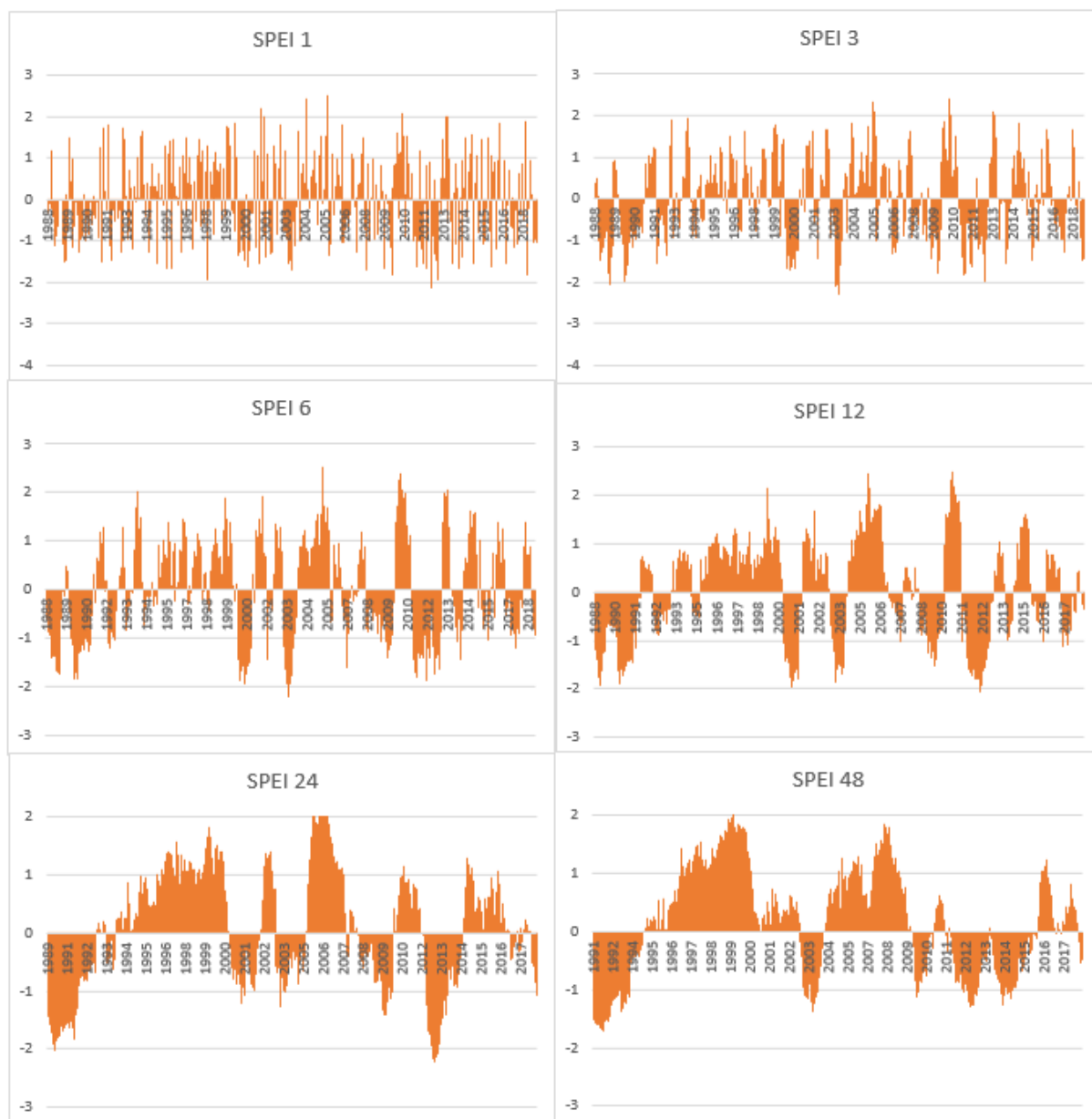


Figure S3 Standardised GROUNDWATER index over different time periods (1, 3, 6, 12, 24 and 48 months) for P-58 observation well

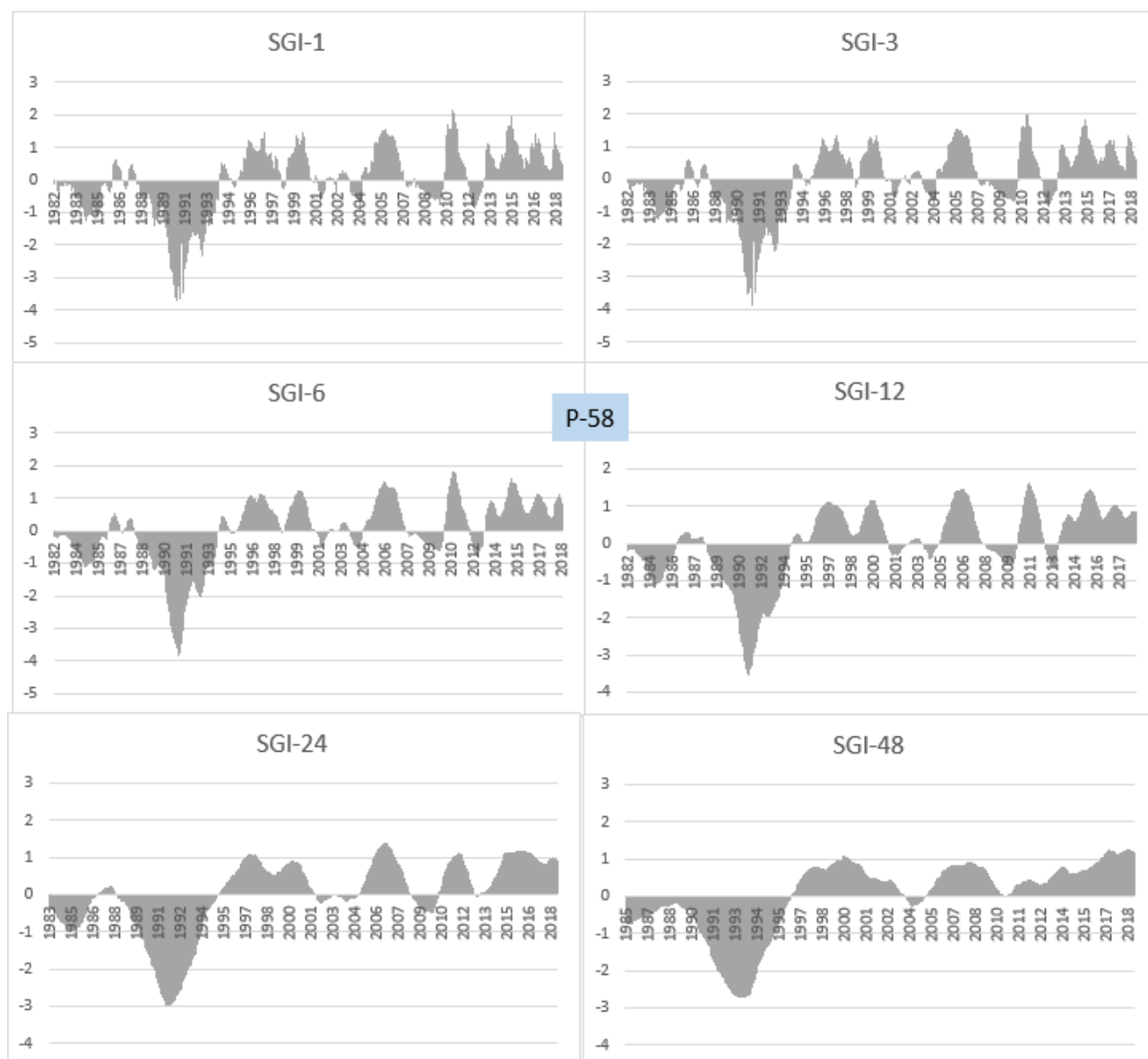


Figure S4 Standardised GROUNDWATER index over different time periods (1, 3, 6, 12, 24 and 48 months) for P-18 observation well

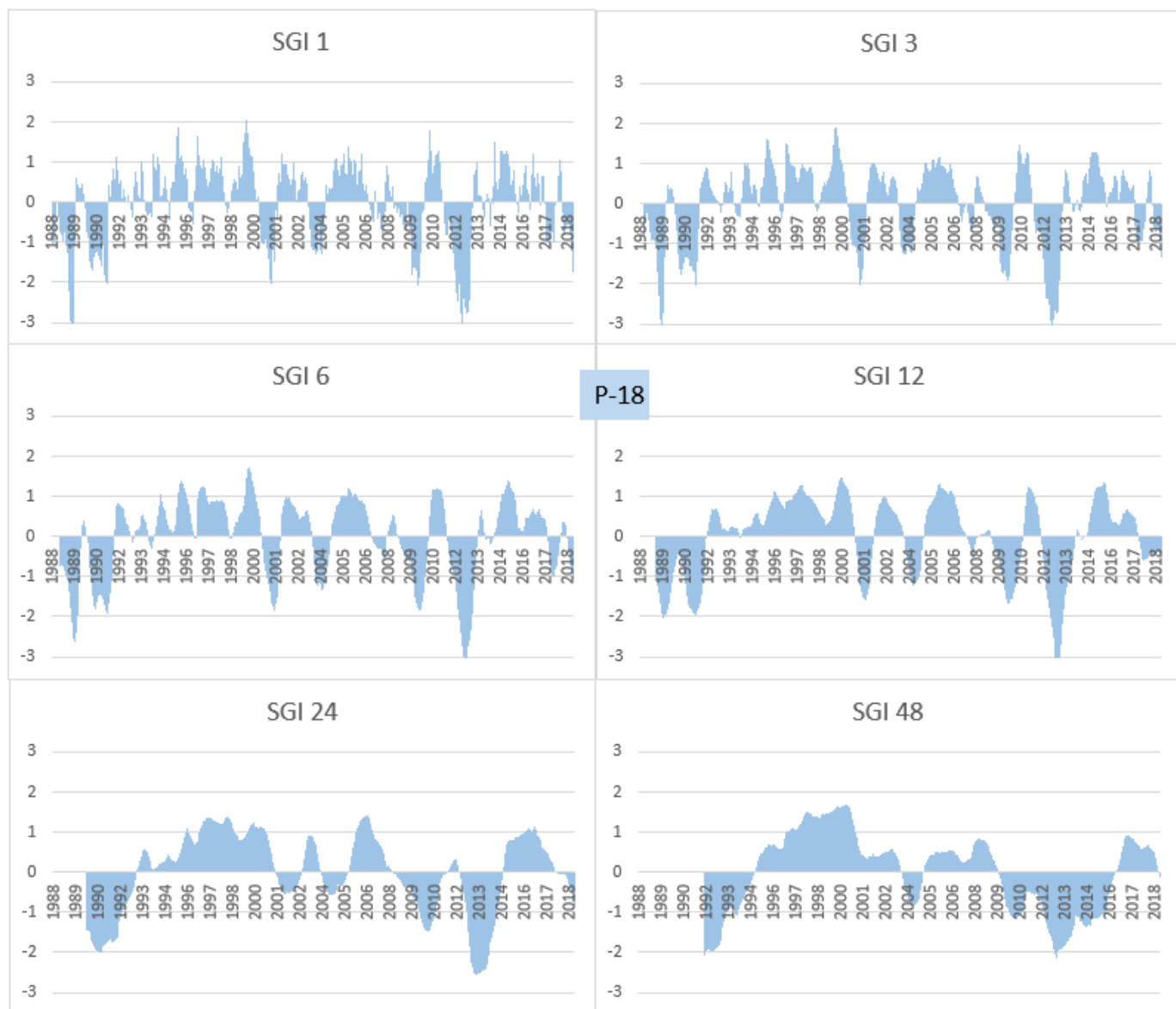


Figure S5 Standardised GROUNDWATER index over different time periods (1, 3, 6, 12, 24 and 48 months) for P-23 observation well

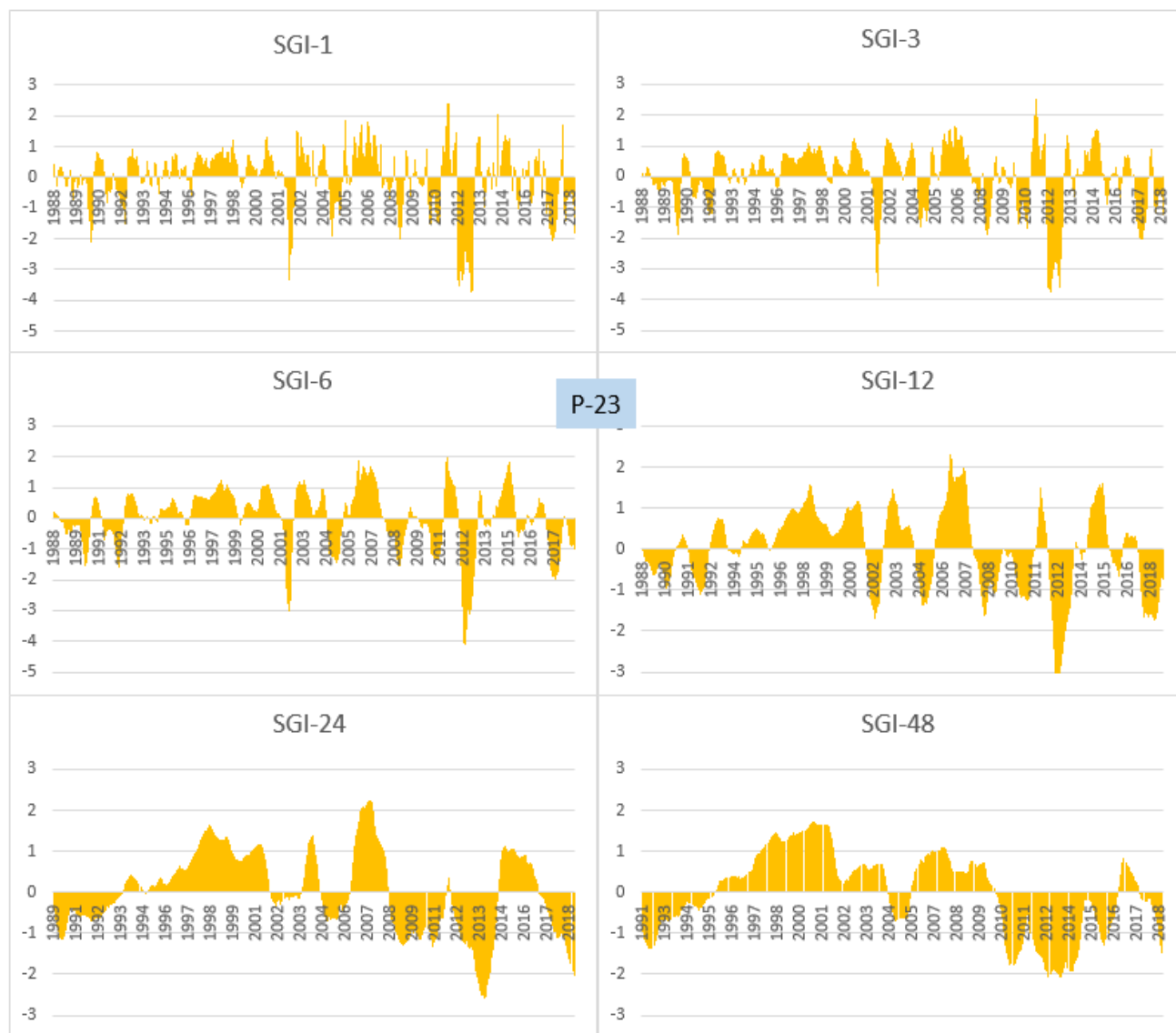


Figure S6 Standardised GROUNDWATER index over different time periods (1, 3, 6, 12, 24 and 48 months) for P-6 observation well

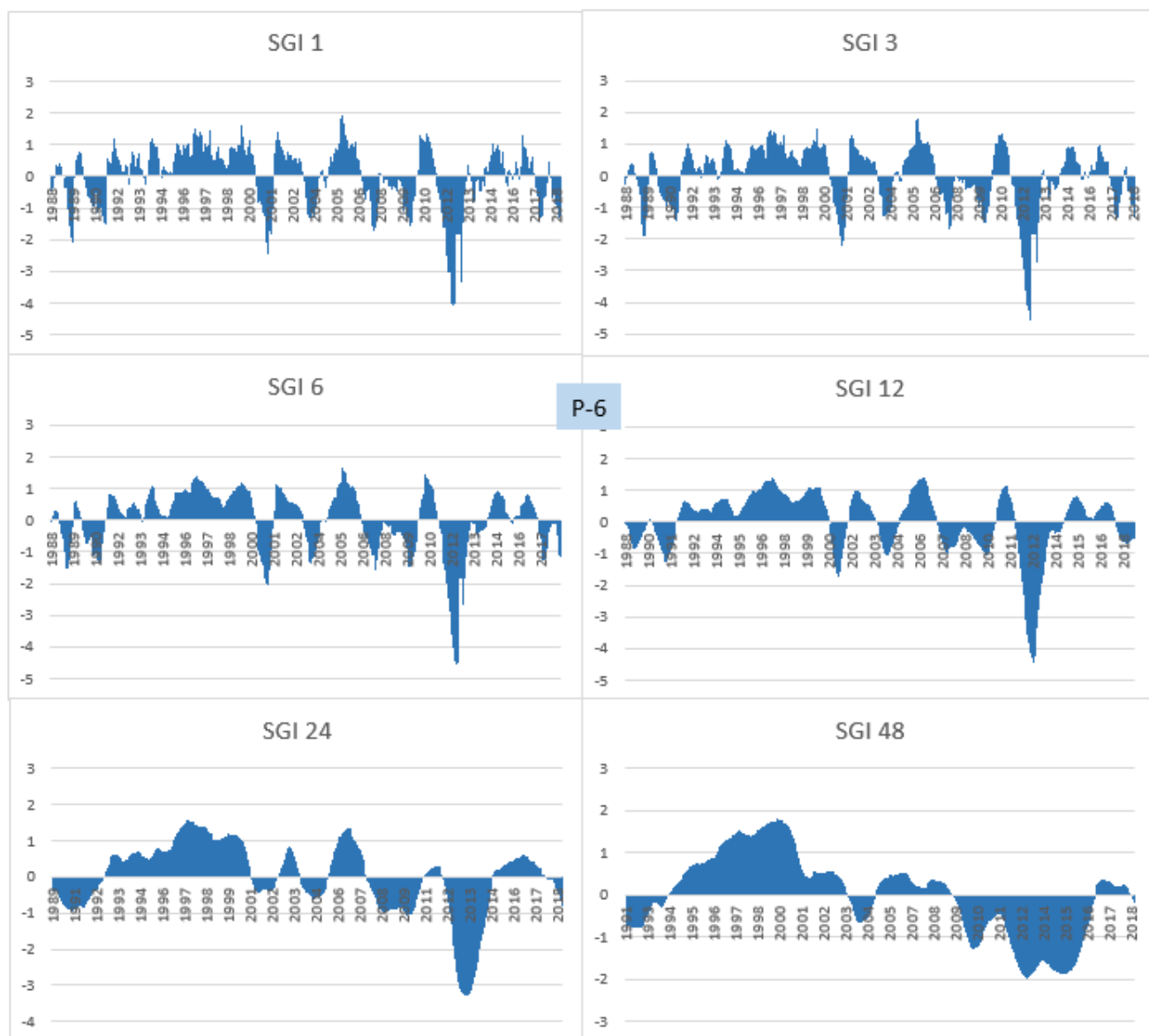


Figure S7 Standardised GROUNDWATER index over different time periods (1, 3, 6, 12, 24 and 48 months) for P-9 observation well

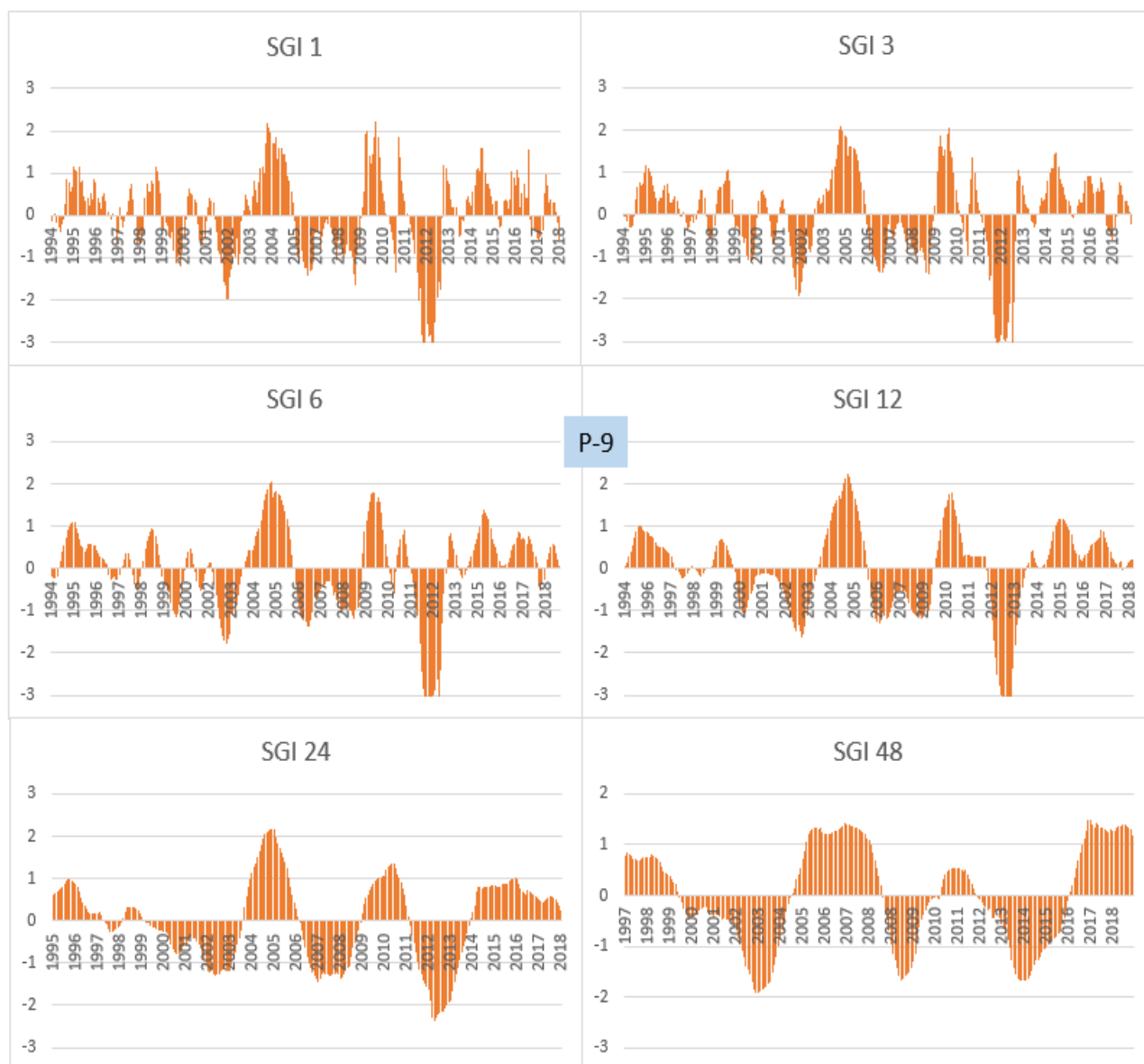


Figure S8 Standardised GROUNDWATER index over different time periods (1, 3, 6, 12, 24 and 48 months) for P-17 observation well

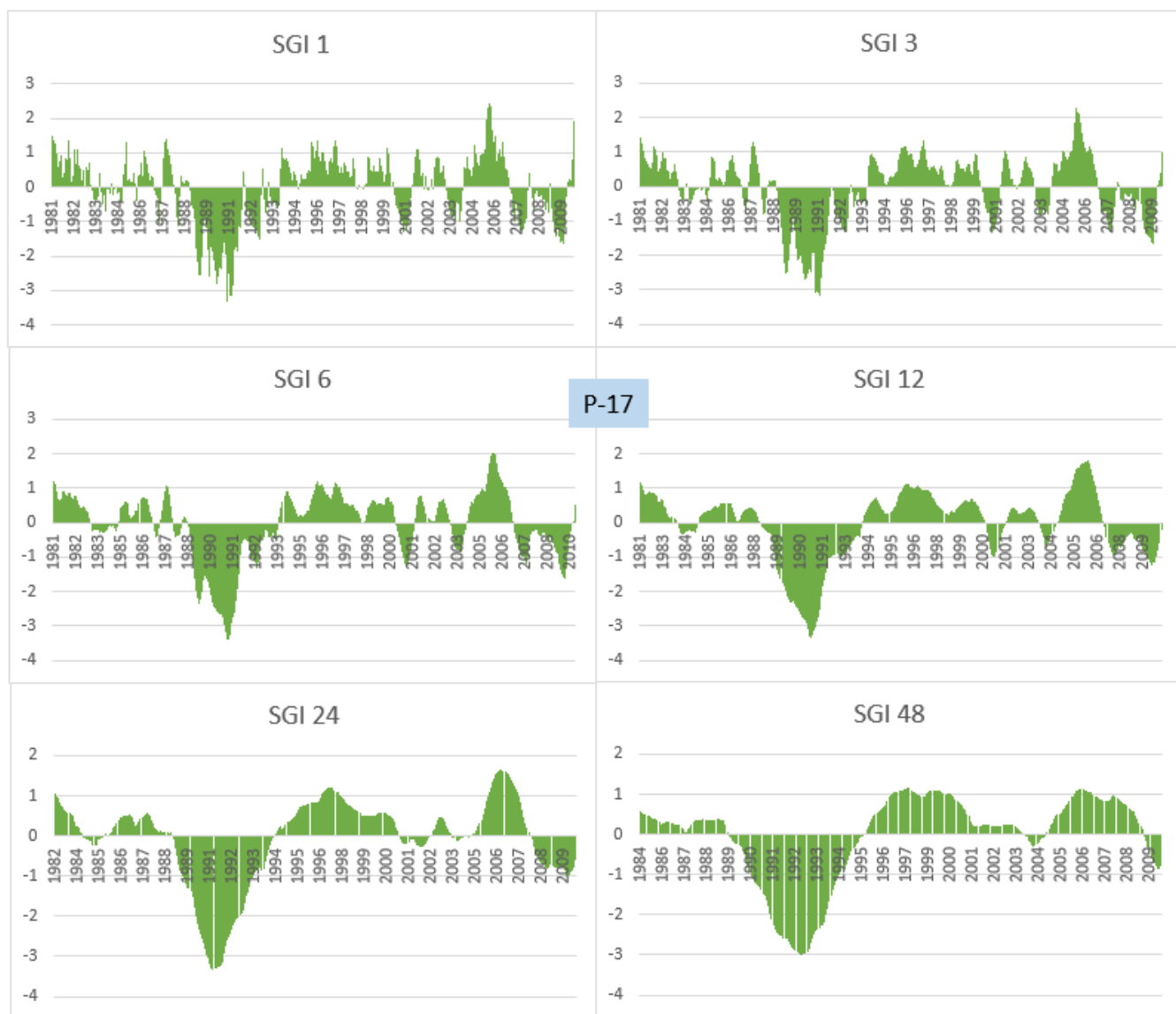


Figure S9 Correlation between SPI and SPEI in different time scales (Našice meteorological station).

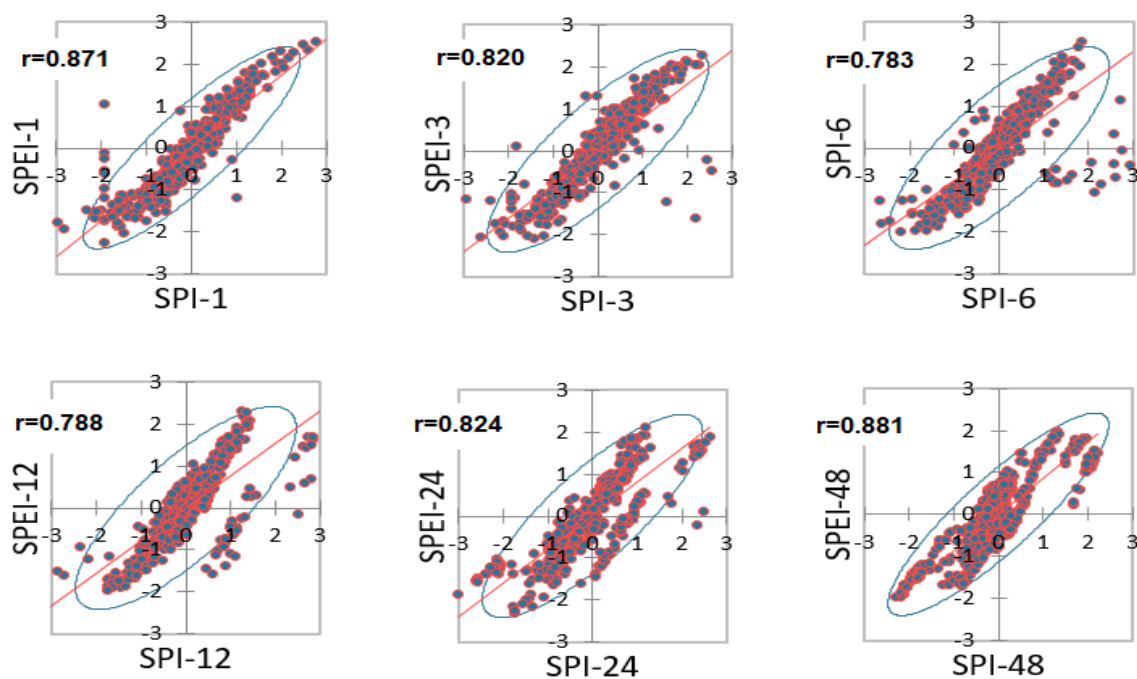


Figure S10 Correlation between SPI and SPEI in different time scales (Slatina meteorological station).

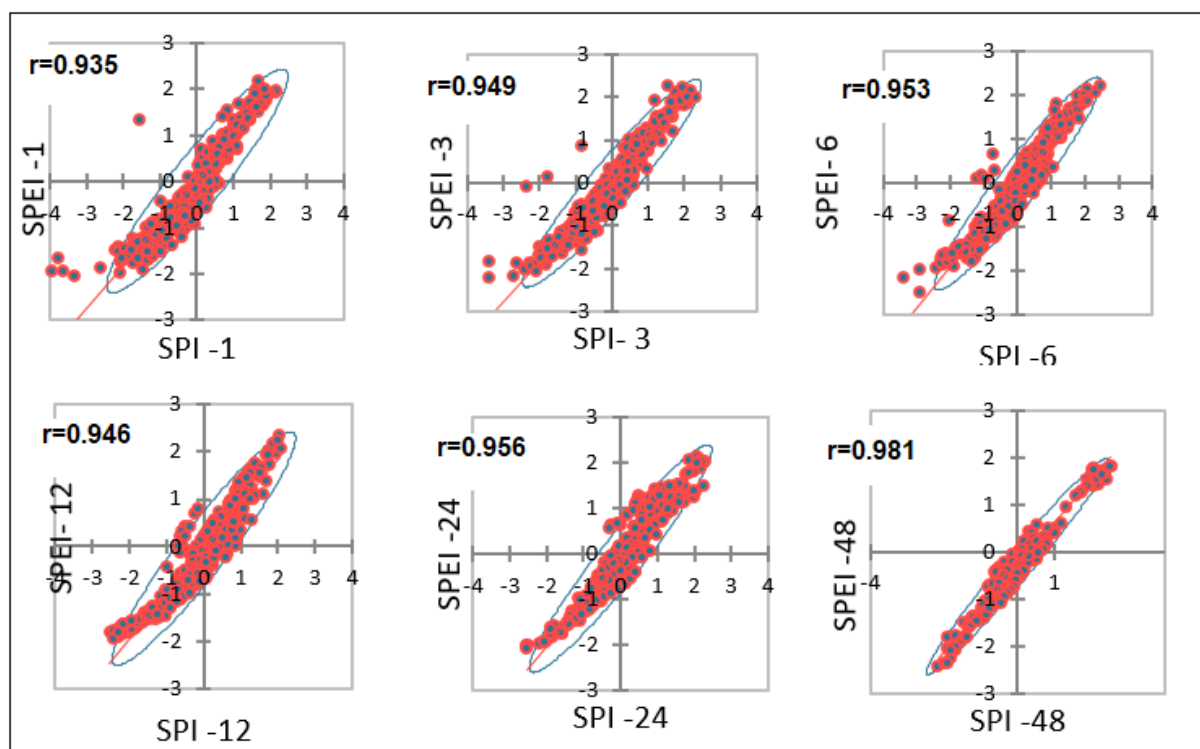


Table S1 Data base of spatial distribution of SPI/SGI correlation over different time scales presented in Figure 7.

Time scale (months)	P-18	P-9	P-58	P-23	P-6	P-17
1	0.199	0.073	0.027	0.059	0.074	0.135
3	0.481	0.157	0.219	0.078	0.314	0.357
6	0.633	0.224	0.413	0.084	0.51	0.511
12	0.663	0.195	0.656	0.052	0.66	0.593
24	0.459	-0.01	0.72	0.328	0.467	0.572
48	0.273	-0.053	0.669	0.069	0.245	0.477

Table S2 Data base of spatial distribution of SPI/SGI correlation over different time scales presented in Figure 9.

Time scale (months)	P-18	P-9	P-58	P-23	P-6	P-17
1	0.254	0.1	0.03	0.101	0.109	0.195
3	0.425	0.135	0.138	0.101	0.225	0.332
6	0.525	0.235	0.226	0.008	0.309	0.431
12	0.654	0.408	0.367	0.016	0.437	0.556
24	0.793	0.567	0.531	0.427	0.601	0.686
48	0.81	0.592	0.665	0.52	0.581	0.759