

Supplementary Material

Dispersive solid-liquid extraction coupled with LC-MS/MS for the determination of sulfonylurea herbicides in strawberries

Song *et al.*

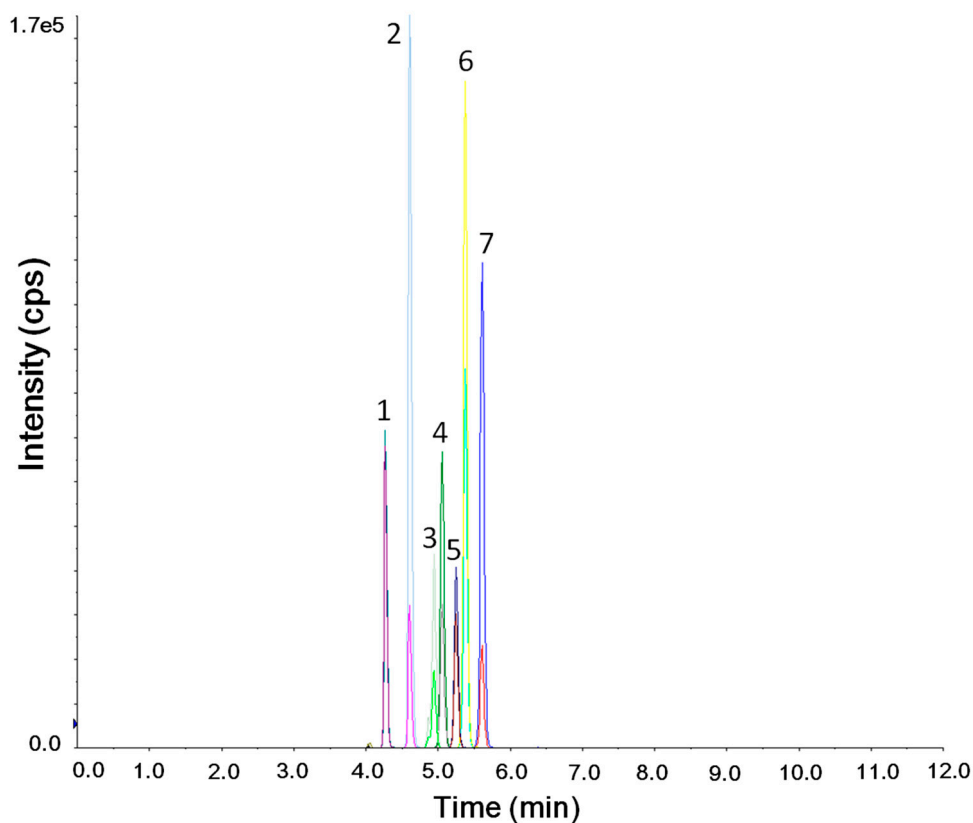


Figure S1. The multiple reaction monitoring chromatogram of 7 sulfonylurea herbicides at the optimized LC–MS/MS conditions. Peaks: 1, chlorsulfuron; 2, azimsulfuron; 3, flucetosulfuron; 4, metazosulfuron; 5, imazosulfuron; 6, ethoxysulfuron; 7, halosulfuron-methyl.