

Supplementary material

Figure S1. Changes of amylase activity in banana peel during storage at 6°C and 25°C. α -amylase activity (A), β -amylase activity (B). Each data point represents a mean \pm standard error (n=3). “*” means a significant difference between control and experimental fruit at 5 % level.

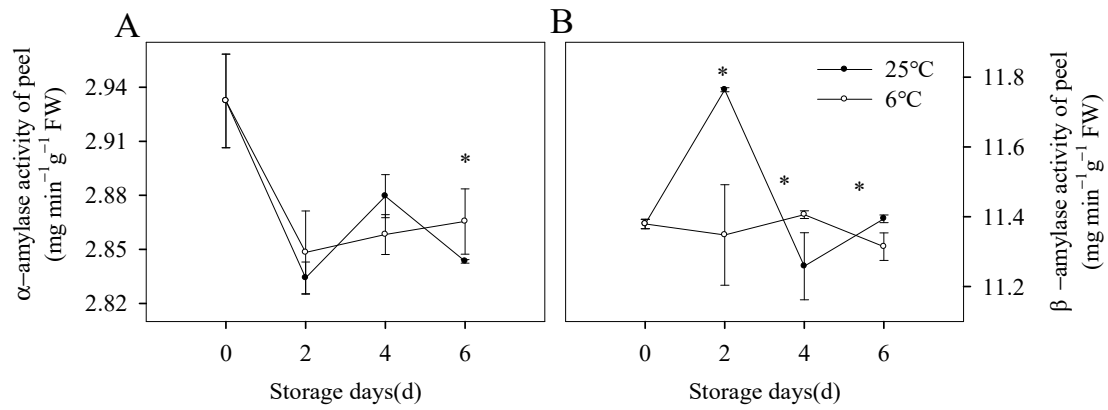


Figure S2. Ultrastructural changes of banana peel during storage at 6°C and 25°C were observed by scanning electron microscope. Parenchyma cells (A) and vascular cells (B) of banana peel during storage.

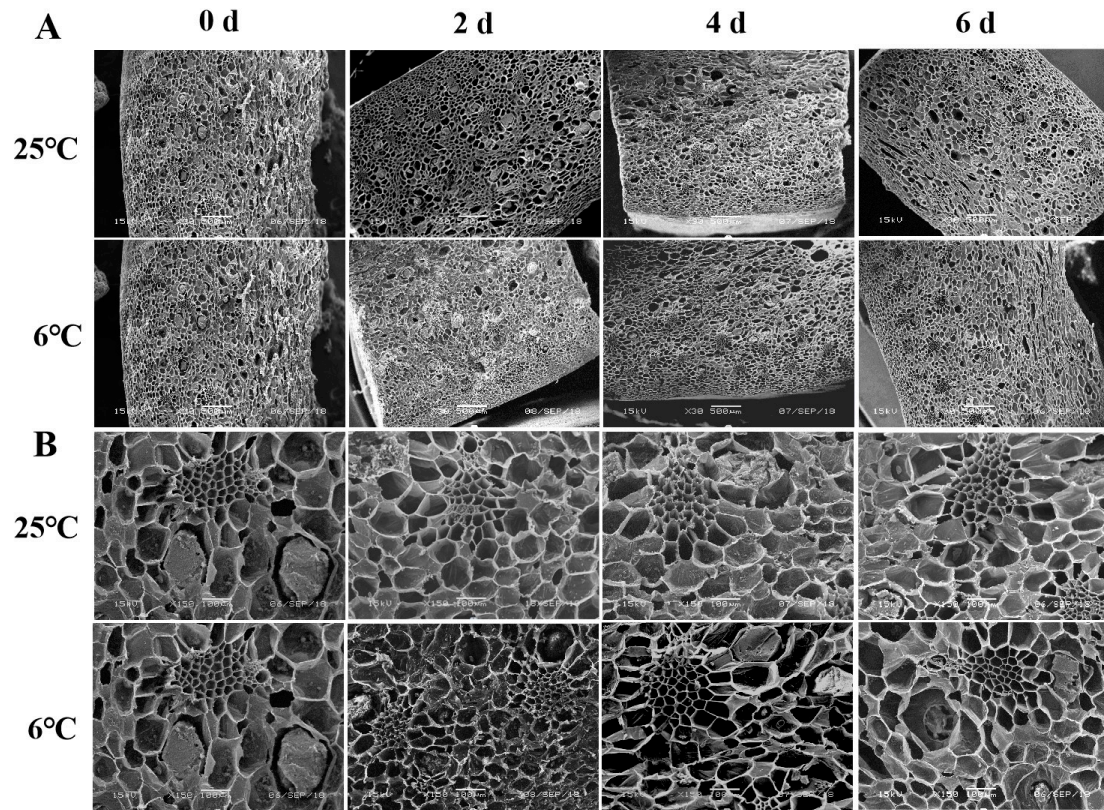


Table S1. Primers used for RT-qPCR.

Gene Name	Gene ID	Forward (5'-3')	Reverse (5'-3')
<i>POD1</i>	Ma02_t04930.1	ACAACAACGTGGC TGAGAAGGA	GCAGTCGGTGGT GGCAGATTA
<i>PAL</i>	Ma01_t04420.1	CACAGGAGGACCA AGCAAGGAG	GCAGCGGACGAA GGCAATGT
<i>LAC3</i>	Ma01_t22390.1	ACATCTCCGACGC ATTCACCAT	CCGAGCATGAGC ACCGAAGT
<i>CCR4</i>	Ma01_t00690.1	AGGAGGAAGGTG TGGACGTGAAG	GGCAACGGCTTA CAAGTGAGGAT
<i>CAD2</i>	Ma04_t12960.1	GCAGCCTCAAGAC GGAGAAGAC	GGTGGAGATCAG TGTGGCAGAC
<i>4CL7</i>	Ma09_t07500.1	ACGATCACCAACG GCAACACC	CCTTCAACCTGT CCAGCACGAA
<i>MaAtion-3</i>	Ma09_t08490.1	TGGTATGGAAG CCGCTGGTA	TCTGCTGGAA TGTGCTGAGG