

Supplementary file

Figure legends for the Supplementary figures

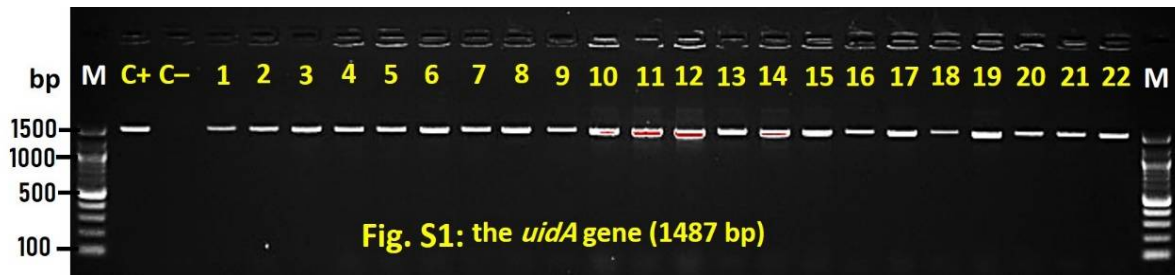


Figure S1: A representative agarose gel electrophoresis showing the amplified DNA product of the *uidA* gene (the marker gene for *E. coli*) at the expected molecular weight of 1487 bp. Genomic DNA from *E. coli* isolates was used as a template.

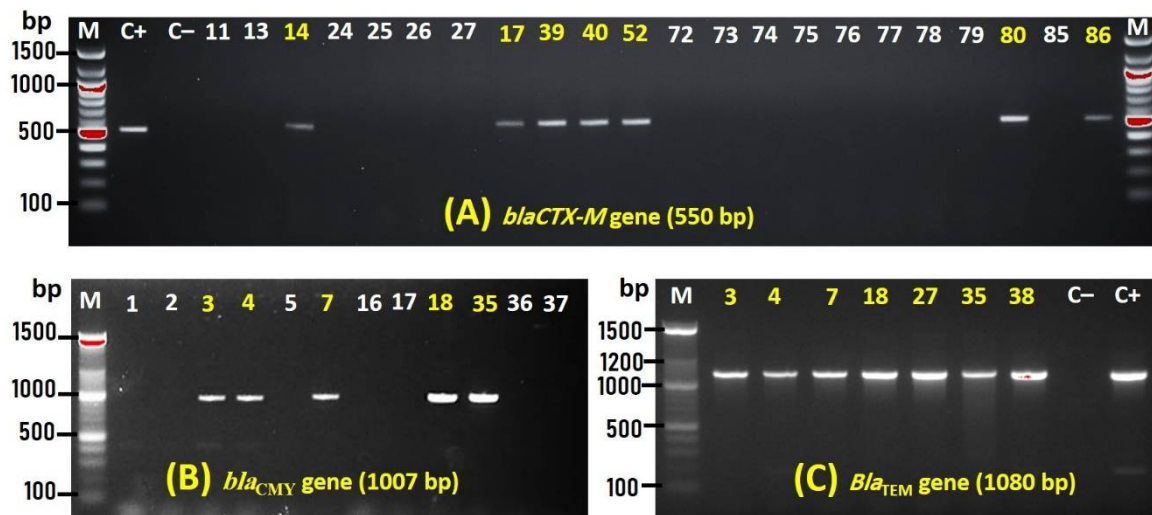


Figure S2: A representative agarose gel electrophoresis for the PCR-amplified DNA products of the β -lactamase encoding genes *bla*_{CTX-M} (A), *bla*_{CMY} (B), and *bla*_{TEM} (C), at the expected molecular weight of 550, 1007, and 1080 bp, respectively.

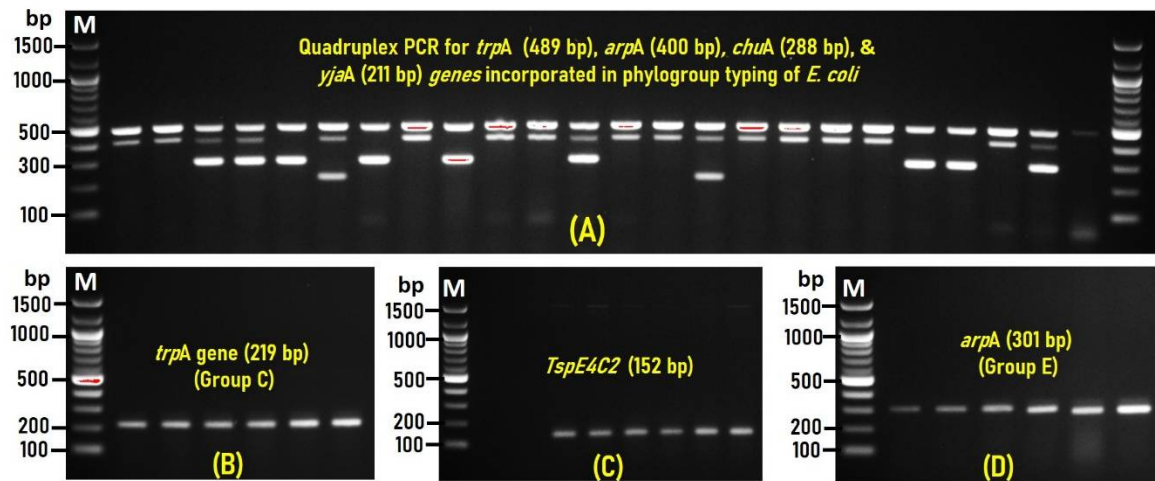


Figure S3: A representative agarose gel electrophoresis for the PCR-amplified genes incorporated in the phylogroup typing of the confirmed *E. coli* strains. (A): The *trpA* (internal control), *arpA*, *chuA*, and *yjaA* were amplified as quadruplex PCR and determined at the expected molecular sizes of 489, 400, 288, and 211 bp, respectively. Agarose gel electrophoresis of a singleplex-PCR for the amplification of (B) *trpA* (group C), (C) *TspE4C2*, and (D) *arpA* (group E) which were verified at the expected molecular size of 219, 152, and 301 pb, respectively.