

Figure S1. The two-dimensional (A) and three-dimensional (B) plots of average raw spectra at each postharvest storage time for No.2-10M.

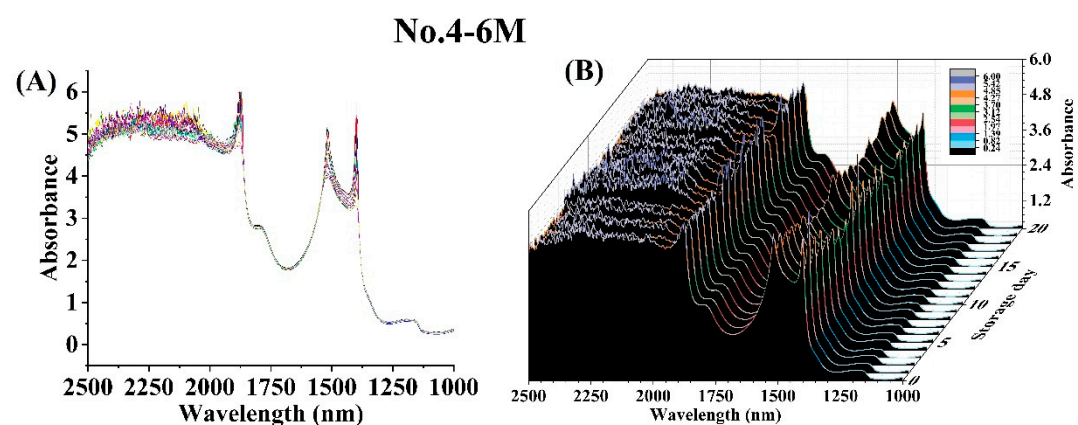


Figure S2. The two-dimensional (A) and three-dimensional (B) plots of average raw spectra at each postharvest storage time for No.4-6M.

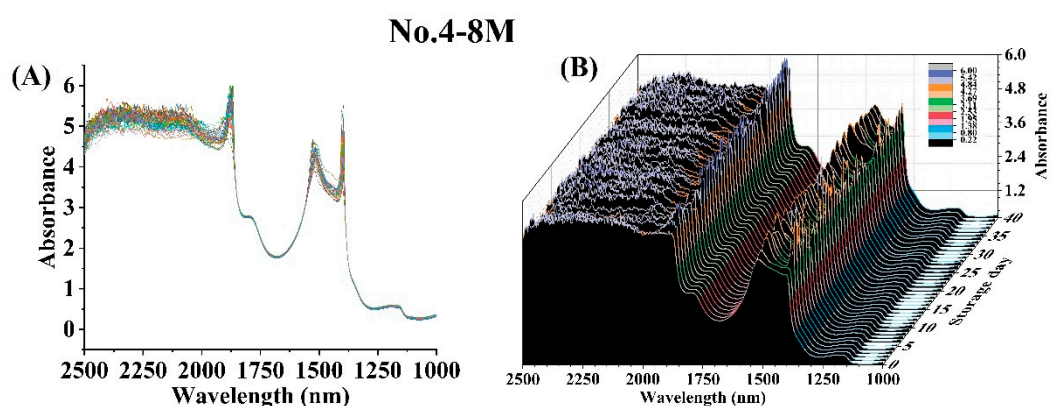


Figure S3. The two-dimensional (A) and three-dimensional (B) plots of average raw spectra at each postharvest storage time for No.4-8M.

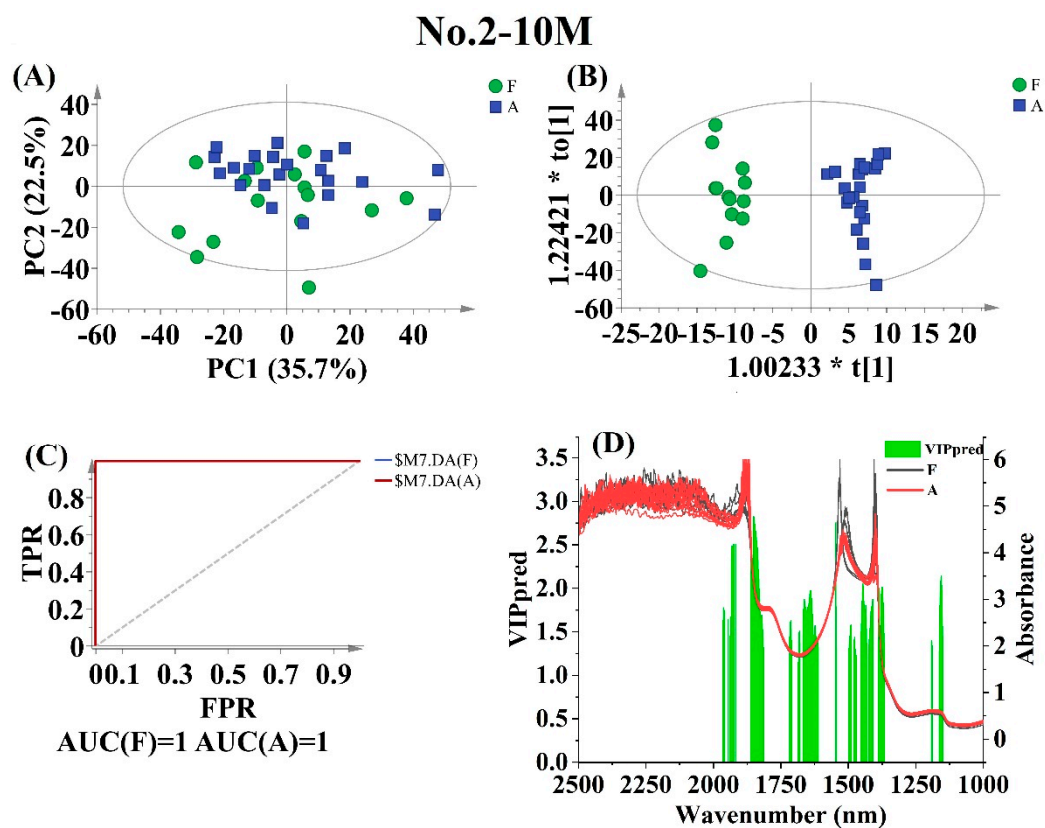


Figure S4. Discrimination results for No.2-10M according to postharvest storage time. Score scatter plot based on PCA analysis (A), Score scatter plot based on OPLS-DA analysis (B), AUC prediction value (C), and characteristic wavelengths (VIP > 1 and $p < 0.05$) (D). The ellipse represents the Hotelling T^2 with 95% confidence interval.

No.4-6M

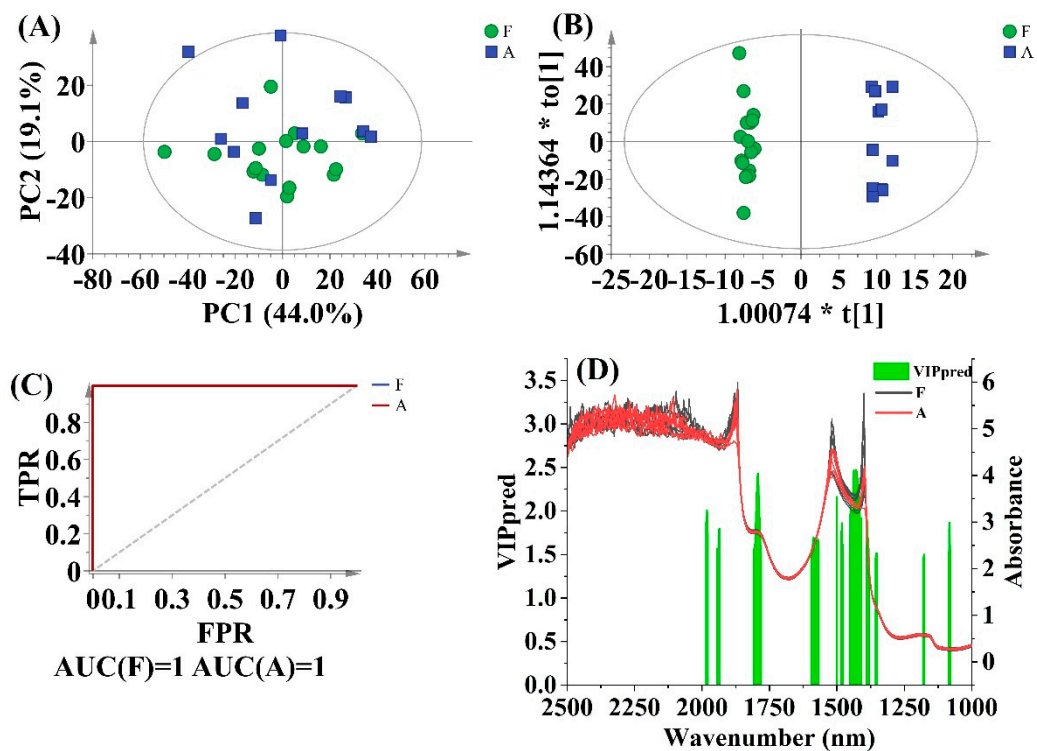


Figure S5. Discrimination results for No.4-6M according to postharvest storage time. Score scatter plot based on PCA analysis (A), Score scatter plot based on OPLS-DA analysis (B), AUC prediction value (C), and characteristic wavelengths (VIP > 1 and $p < 0.05$) (D). The ellipse represents the Hotelling T^2 with 95% confidence interval.

No.4-8M

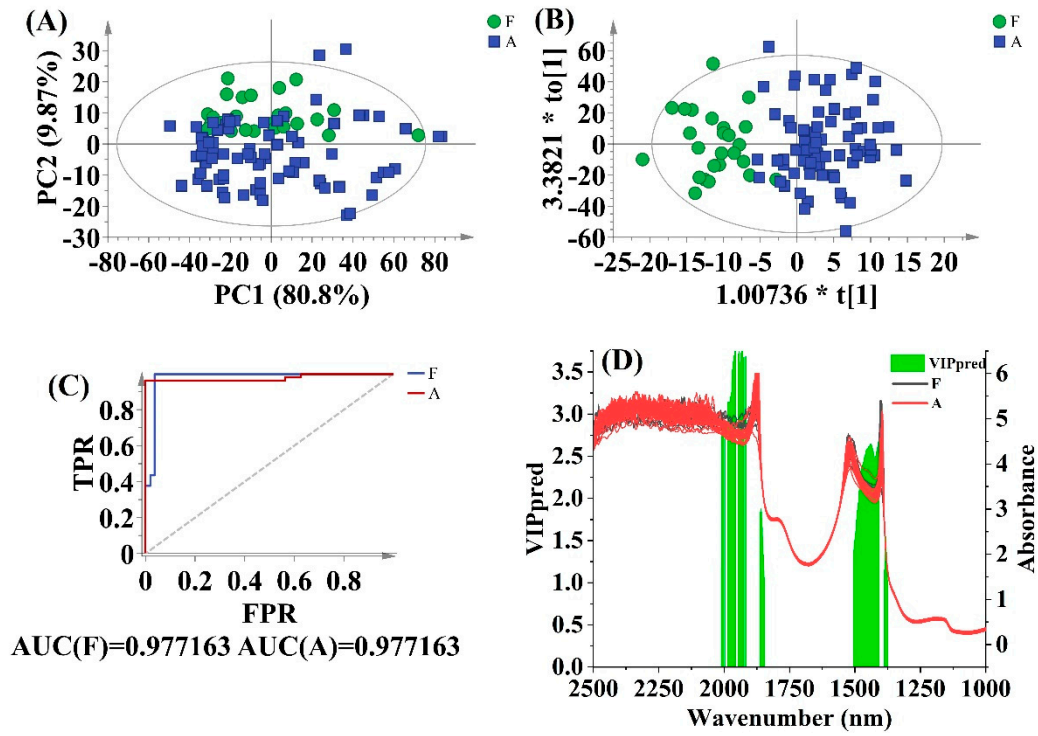


Figure S6. Discrimination results for No.4-8M according to postharvest storage time. Score scatter plot based on PCA analysis (A), Score scatter plot based on OPLS-DA analysis (B), AUC prediction value (C), and characteristic wavelengths (VIP > 1 and $p < 0.05$) (D). The ellipse represents the Hotelling T^2 with 95% confidence interval.