

Table S1. MS parameters of 16 Quinolones

Compound	Time/ min	Parent ion mass to charge ratio/(m/z)	Quantitative mass to charge ratio/(m/z)	Qualitative mass to charge ratio/(m/z)	Collision energy/V	Debunching voltage/V	Internal standard
Enrofloxacin	3.39	360.3	316.2	245.1	24/36	100	Enrofloxacin-D5
Ciprofloxacin	3.28	332.2	314.1	231.0	30/30	100	Ciprofloxacin-D8
Ofloxacin	3.25	362.2	318.1	261.1	26/38	100	Norfloxacin-D5
Norfloxacin	3.23	320.2	302.2	233.1	35/33	100	Norfloxacin-D5
Pefloxacin	3.27	334.3	316.1	290.0	26/24	108	Norfloxacin-D5
Lomefloxacin	3.34	352.2	265.1	334.1	32/30	100	Ciprofloxacin-D8
Dalfloxacin	3.32	358.2	340.1	255.0	31/53	110	Ciprofloxacin-D8
Sarafloxacin	3.55	386.2	299.0	368.2	28/31	115	Enrofloxacin-D5
Flurofloxacin	3.27	370.2	326.1	269.0	24/38	100	Norfloxacin-D5
Difluoxacin	3.57	400.2	356.2	382.1	39/31	110	Ciprofloxacin-D8
Sparfloxacin	3.55	393.2	349.2	292.0	26/35	120	Enrofloxacin-D5
Enoxacin	3.23	320.2	302.1	233.1	24/34	100	Norfloxacin-D5
Nalidixic acid	4.39	233.1	215.0	187.1	18/34	60	Enrofloxacin-D5
Oxalic acid	3.99	262.1	244.1	160.1	23/47	80	Enrofloxacin-D5
Flumequine	4.44	262.2	244.0	202.1	23/25	80	Enrofloxacin-D5
Orbifloxacin	3.43	396.2	295.1	352.0	34/24	103	Ciprofloxacin-D8
Ciprofloxacin-D8	3.27	340.3	322.1	---	28	50	---
Enrofloxacin-D5	3.39	365.1	321.1	---	26	50	---
Norfloxacin-D5	3.23	325.3	307.2	---	42	110	---

Note: --- means no internal standard.

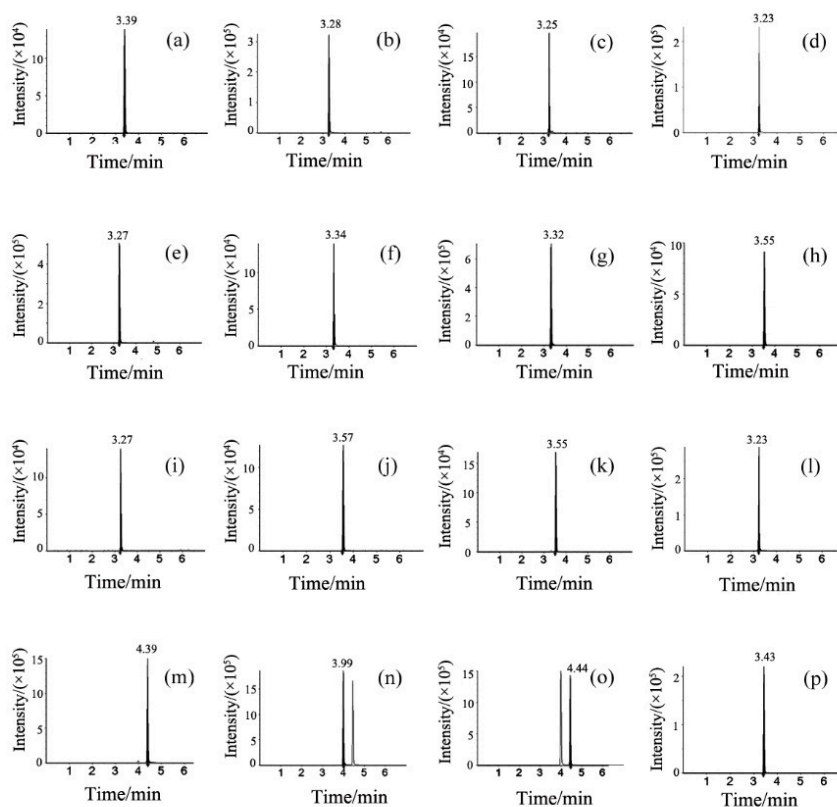


Figure S1. The 16 quinolones of MRM chromatogram

(a)-Enrofloxacin; (b)-Ciprofloxacin; (c)-Ofloxacin; (d)-Norfloxacin; (e)-Pefloxacin; (f)-Lomefloxacin; (g)-Dalfloxacin; (h)-Sarafloxacin; (i)-Flurofloxacin; (j)-Difluoxacin; (k)-Sparfloxacin; (l)-Enoxacin; (m)-Nalidixic acid; (n)-Oxalic acid; (o)-Flumequine; (p)-Orbifloxacin

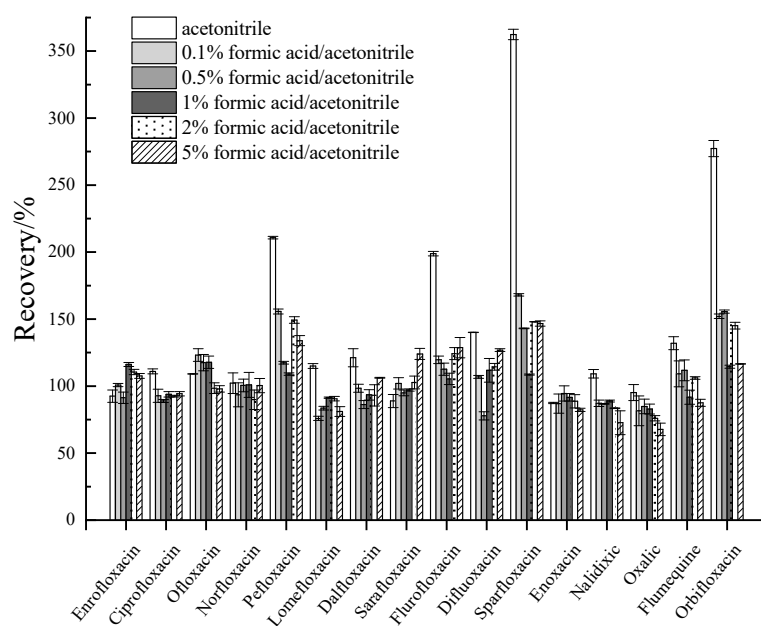


Figure S2. The effect of extraction solvents on the recoveries of 16 quinolones

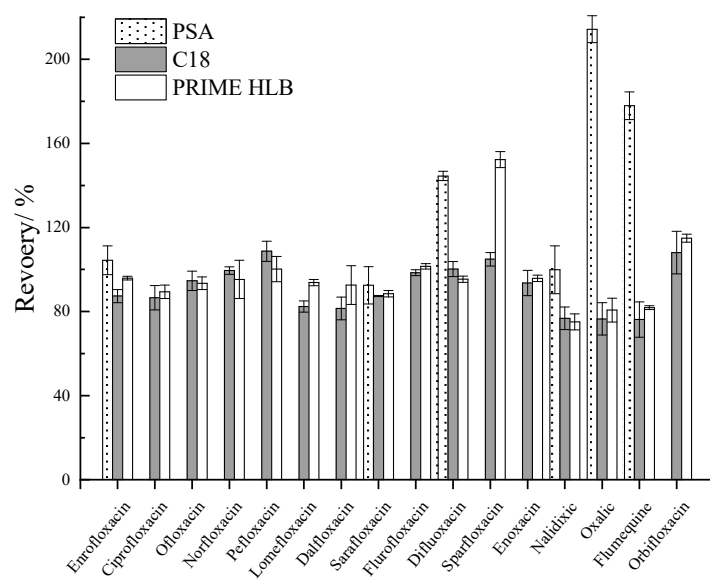


Figure S3. The effect of purification of column on the recoveries of 16 quinolones