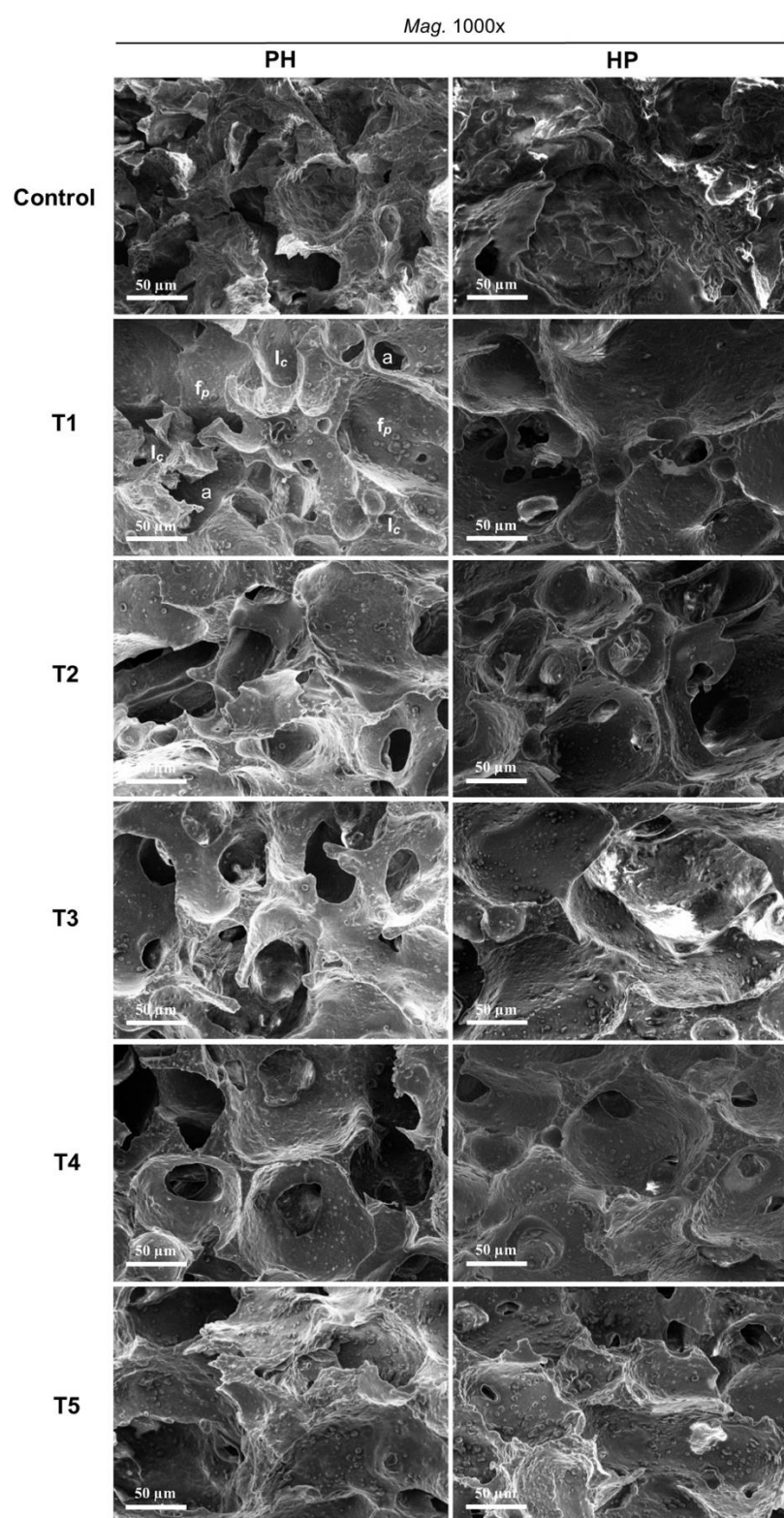


## Supplementary information



*a* – integrated air bubbles.

*I<sub>c</sub>* – ice crystals.

*f<sub>p</sub>* – fat globules and integrated particles of MWP on the ice cream surface.

**Figure S2.** Microstructural properties of ice cream samples including MWPs at a magnification of 1000x.

See Table 1 for the definition of treatment abbreviations.

### Key finding:

Clear visibility of fat globules and aggregated protein particles in ice cream treatments subjected to HP than PH.