

Figure S1. Example of SSR electropherograms. The molecular profile of microsatellite DCA18 identified in all the analysed olive cultivars is reported. Double or single peaks correspond to heterozygous or homozygous profiles, respectively.

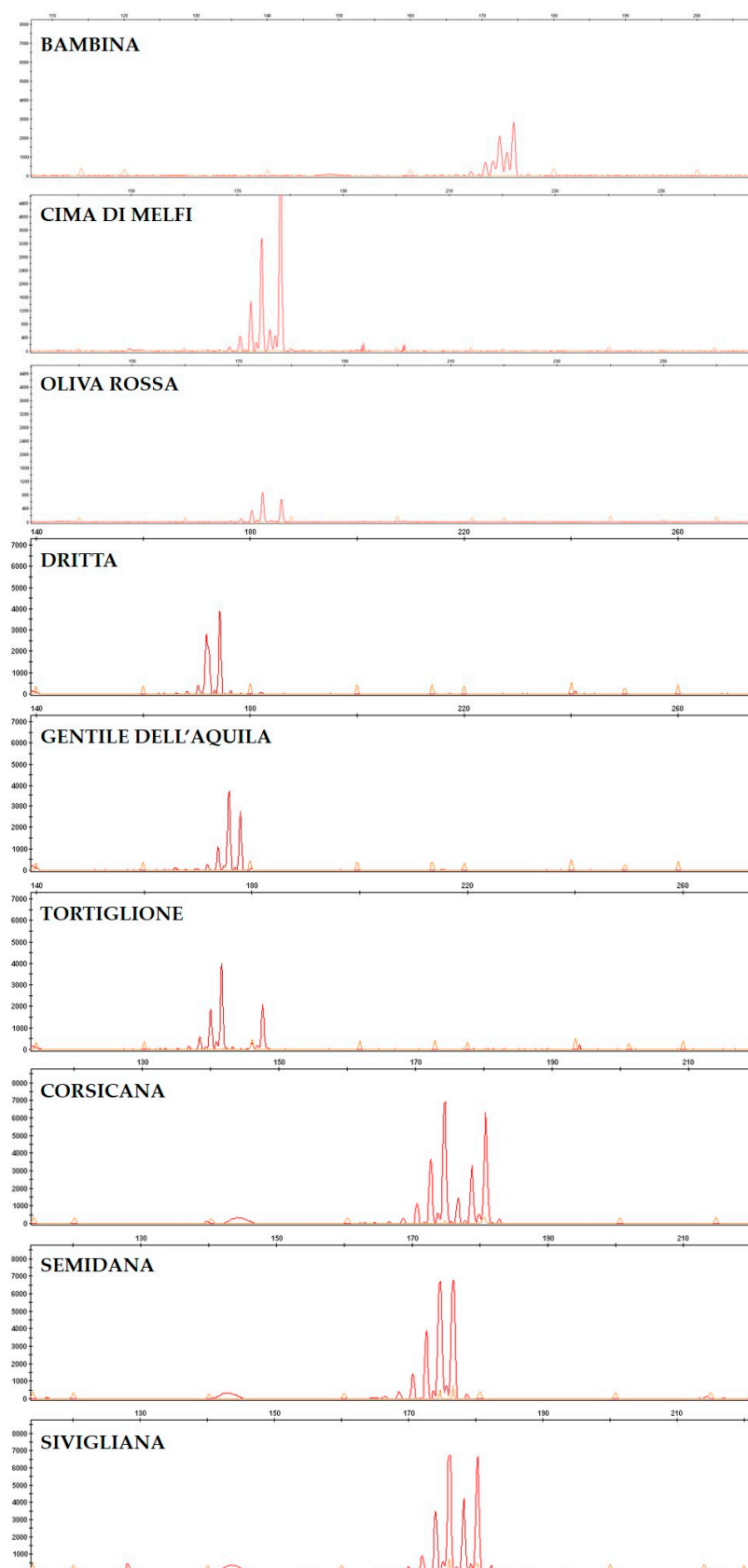


Table S1. Microsatellite markers used in this study. Locus name, repeat motif, primer sequences, annealing temperature (Ta) and allele sizing range (in base pairs, bp) are reported.

SSR locus	Repeat motif	Primer sequence (5'→3')	Ta (°C)	Allele size (bp)	Reference
DCA03	(GA) ₁₉	CCCAAGCGGAGGTGTATATTGTTAC TGCTTTTGTGTTGAGATGTTG	50	229-257	[52]
DCA05	(GA) ₁₅	AACAAATCCCATACGAACTGCC CGTGTGCTGTGAAGAAAATCG	50	194-214	[52]
DCA09	(GA) ₂₃	AATCAAAGTCTTCCTTCTCATTTTCG GATCCTTCCAAAAGTATAACCTCTC	55	162-210	[52]
DCA13	(CA) ₁₅	GATCAGATTAATGAAGATTTGGG AACTGAACCTGTGTATCTTGCATCC	55	110-160	[52]
DCA15	(CA) ₃ G(AC) ₁₄	GATCTGTCTGTATATCCACAC TATACCTTTTCCATCTTGACGC	50	246-273	[52]
DCA17	(GT) ₉ (AT) ₇ AGATA(AGA) ₃₈	GATCAAATTCTACAAAAATATA TAATTTTGGCACGTAGTATTGG	50	107-217	[52]
DCA18	(CA) ₄ CT(CA) ₃ (GA) ₁₉	AAGAAAGAAAAAGGCAGAATTAAGC GTTTTCTGTCTCTACATAAGTGAC	50	159-201	[52]
GAPU45	(AG) ₇	ATCGGGAGGGATGTGATGTA CATCGCATCGCCTGTAAATA	57-60	181-195	[53]
GAPU71b	GA(AG) ₆ (AAG) ₈	GATCAAAGGAAGAAGGGGATAAA ACAACAAATCCGTACGCTTG	57-60	118-144	[53]
GAPU101	(GA) ₈ (G) ₃ (AG) ₃	CATGAAAGGAGGGGGACATA GGCACTGTGTGTCAGATTG	57-60	182-219	[53]
EMO90	(AC) ₁₀	CATCCGGATTTCTTGCTTTT AGCGAATGTAGCTTTGCATGT	50	174-200	[54]
EMOL	(GA) ₁₂	CTTTCCAATATGGGC ATGGCACTTTACGGGAAAAA	50	190-214	[54]

Table S2. List of primers utilized for qRT-PCR analysis.

Gene	Accession number	Primer sequence (5'→3')	Amplicon size (bp)	Reference
OeTYRD	JX266195	TGGATCTGACCAAACCCACT TTAACCCGAATGCAGTAGCC	110	[40]
OeCuAO	GQ851613	AAGATGGCCTTGGGAAGAAT TTCTGCCAATCCTGTTCTCC	191	[40]
OeALDH	JX266197	TTTAAGTGGGGAGCTCAAATACA GATGCTTCAGATATTCCCATGC	200	[40]
OeEF1 α	AM946404	ACCACTGGTGGTTTTGAAGC GAAACCAGAGATGGGGACAA	234	[40]