

Supplementary Materials

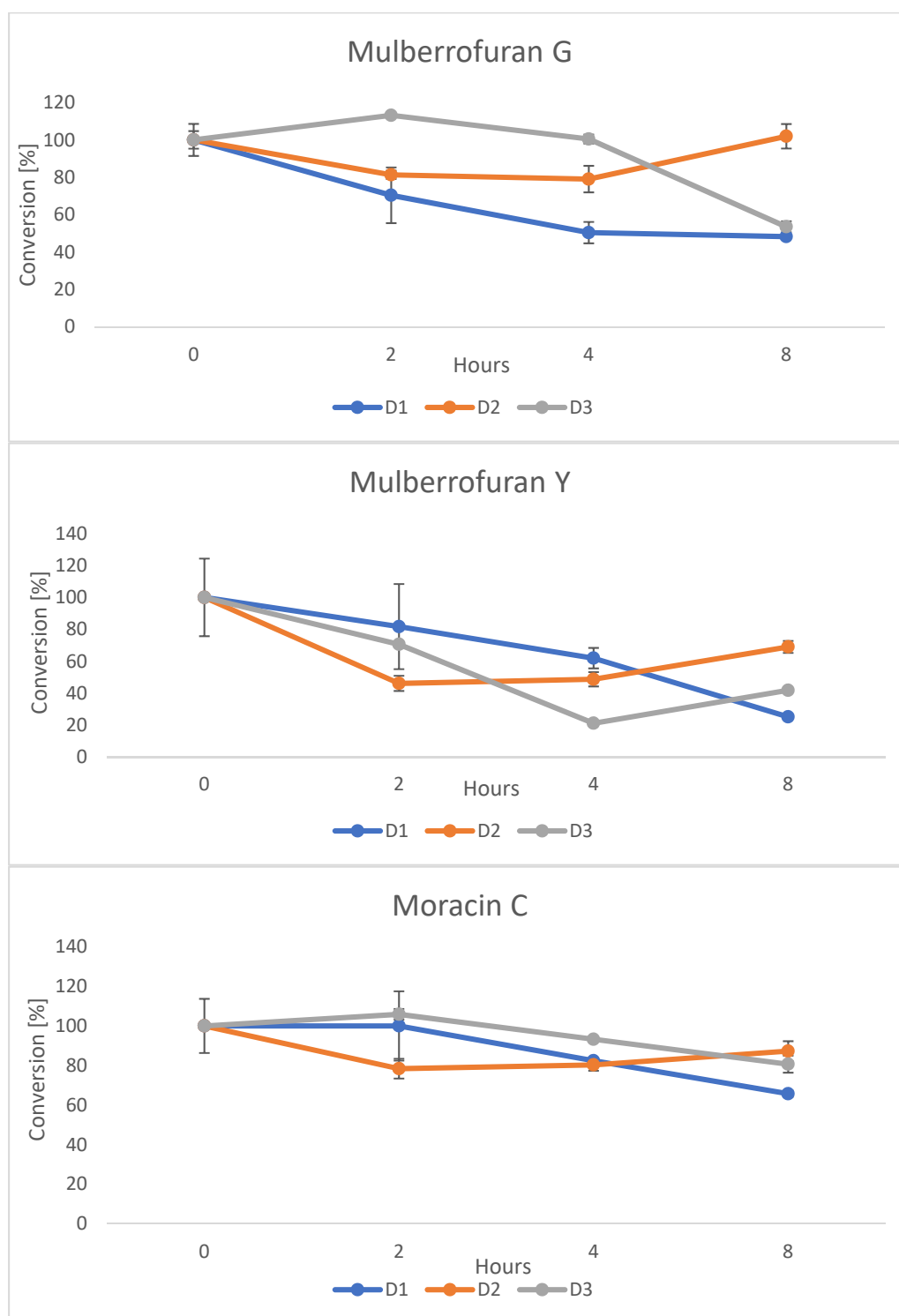


Figure S1. Conversion of 2-arylbenzofurans during *in vitro* batch fermentation with human fecal suspensions. Human fecal cultures consisted of 10% human fecal suspensions in medium containing 10 $\mu\text{g/mL}$ of the compound and incubated for 8 h at 37 $^{\circ}\text{C}$ under anaerobic conditions. Values shown are arithmetic means ($\pm\text{SDs}$), conducted in triplicate. Curves are given for each subject. A: degradation of mulberrofuran G, B: decomposition of mulberrofuran Y, C: degradation of moracin C.

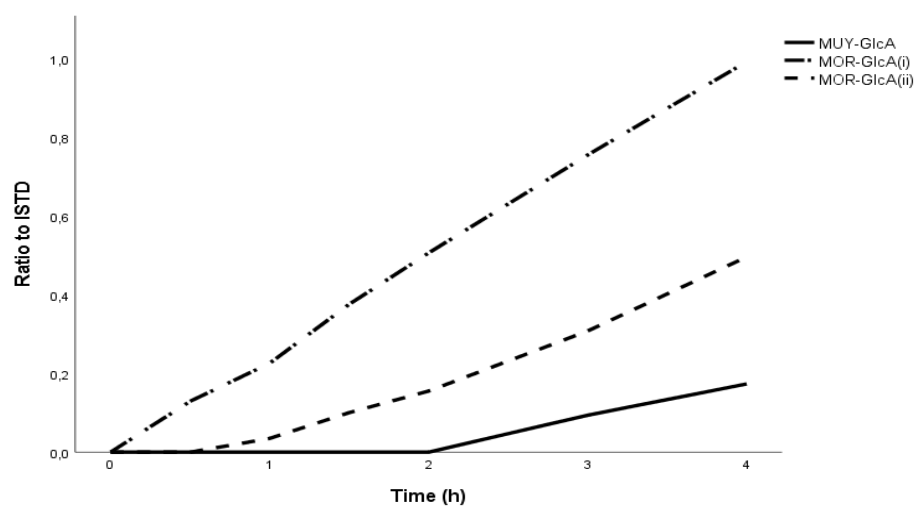


Figure S2. Monitored trends in metabolites on the basolateral side of inserts in the Transwell™ cell system. Values obtained from LC/MS for MUY-GlcA, MOR-GlcA(i) and MOR-GlcA(ii) are expressed as mean intensity \pm standard deviation, $n = 3$.