

# **Evaluation of New, Sputtered Carbon SPME Fibers with a Multi-Functional Group Test Mixture**

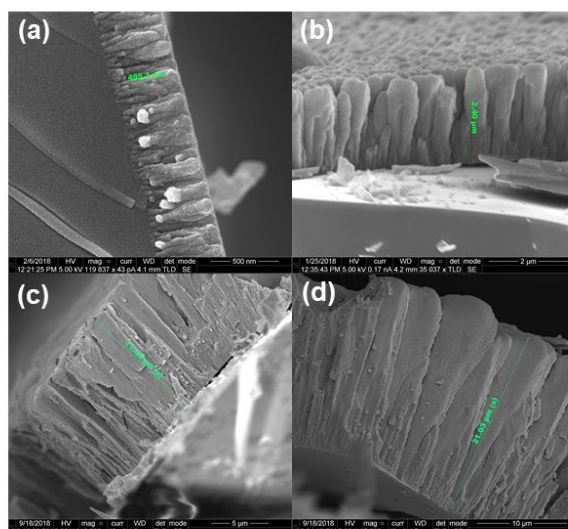
Dhananjay I. Patel,<sup>1</sup> Tuhin Roychowdhury,<sup>1</sup> Collin Jacobsen,<sup>1</sup> Colton Myers,<sup>2</sup> Jason S.

Herrington,<sup>2\*</sup> Matthew R. Linford<sup>1\*</sup>

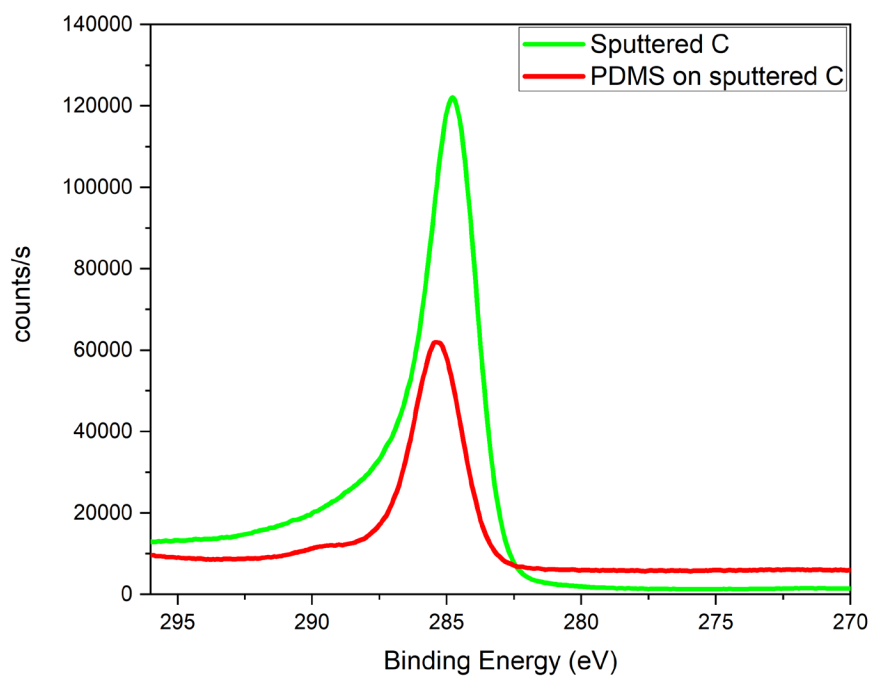
<sup>1</sup>Department of Chemistry & Biochemistry, Brigham Young University, Provo, UT 84602, United States

<sup>2</sup>Restek Corporation, 110 Benner Circle, Bellefonte, PA 16823, United States

## **Supporting Information**



**Figure S1.** SEM images of cross section of sputtered carbon coatings with thicknesses of (a) 0.5  $\mu\text{m}$ , (b) 2.5  $\mu\text{m}$ , (c) 11.5  $\mu\text{m}$ , and (d) 20  $\mu\text{m}$ .



**Figure S2.** XPS C 1s narrow scan of sputtered carbon coatings with and without PDMS.